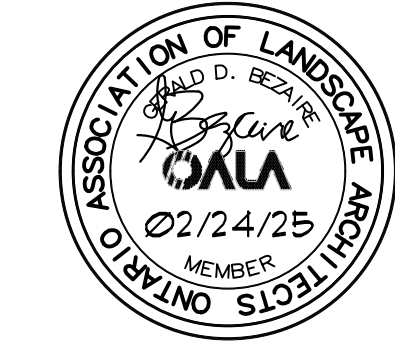


SEAL:



ISSUED:

REVISIONS:
1. SFA COMMENTS 04.10.25

All drawings, specifications and other related documents are the copyright property of the CONSULTANT and shall be returned upon request.
Reproduction of drawings and related documents, in whole or in part, is forbidden without the written permission of the CONSULTANT.
The contractor shall check and verify all pertinent dimensions and report any discrepancies to the CONSULTANT before proceeding with the work.

PROJECT:

PROPOSED
DEVELOPMENT
475-479 CABANA RD. WEST
WINDSOR, ONTARIO

DRAWING TITLE:

EXISTING TREE
INVENTORY
AND
PRESERVATION
PLAN

SCALE:
As Noted

DRAWN BY:
GDB

CHECKED BY:
FLB

APPROVED BY:

DATE: FEB., 2025

DRAWING NO:

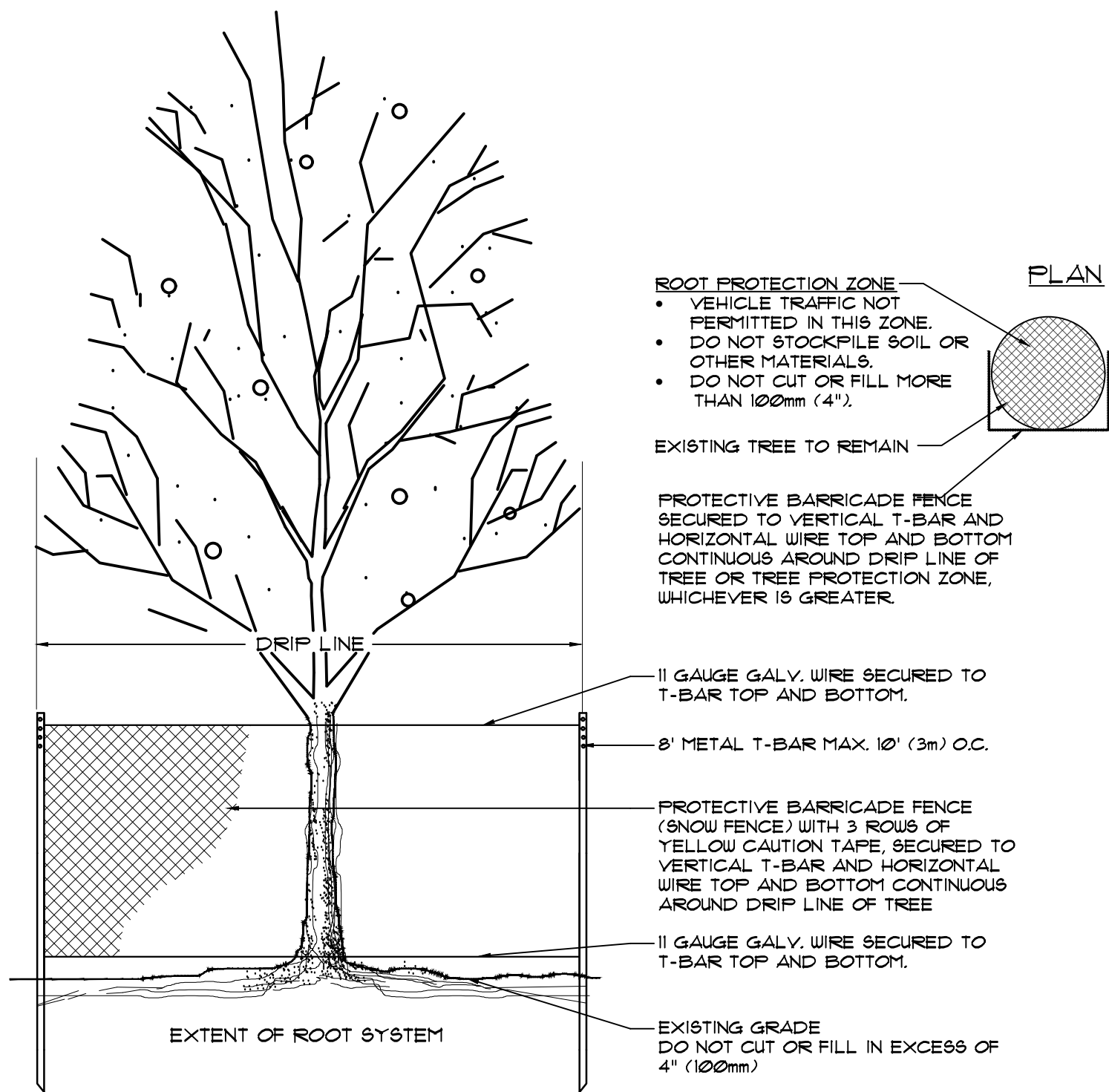
LA-1

CAD file: 1724 tipp

Existing Tree List and Condition					
TREE NO.	BOTANICAL NAME	COMMON NAME	SIZE (cm- dbh)	CONDITION	REMARKS
1	CELTIS OCCIDENTALIS	COMMON HACKBERRY	6.8	GOOD	REMAIN, CITY R.O.W.
2	CELTIS OCCIDENTALIS	COMMON HACKBERRY	5.2	GOOD	REMAIN, CITY R.O.W.
3	SYRINGA RETICULATA 'IVORY SILK'	IVORY SILK TREE LILAC	5.7	GOOD	REMAIN, CITY R.O.W.
4	QUERCUS BICOLOR	SWAMP WHITE OAK	19.8	POOR	REMOVE, CONDITION, GROWING UNDER #5
5	ULMUS AMERICANA	AMERICAN ELM	87.7	FAIR	EVIDENCE OF LIGHTNING STRIKE
6	EUONYMUS ALATUS	WINGED EUONYMUS	6.0	POOR	REMOVE, CONDITION
7	ULMUS AMERICANA	AMERICAN ELM	19.2	FAIR	REMOVE, SPECIES
8	ACER SACCHARINUM	SILVER MAPLE	30.4	FAIR	REMOVE, DEVELOPMENT
9	ACER SACCHARINUM	SILVER MAPLE	14.4	FAIR	REMOVE, DEVELOPMENT
10	ACER SACCHARINUM	SILVER MAPLE	40.2	POOR	REMOVE, LARGE CAVITY IN TRUNK
11	ULMUS AMERICANA	AMERICAN ELM	21.8	FAIR	REMOVE, SEVERE LEAN
12	ACER SACCHARINUM	SILVER MAPLE	19.6	FAIR	REMOVE, DEVELOPMENT
13	POPULUS DELTOIDES	EASTERN COTTONWOOD	56.0	FAIR	VISIBLE DEADWOOD PRESENT, REMOVE, DEVELOPMENT
14	CARYA OVATA	SHAGBARK HICKORY	74.0	GOOD	REMOVE, PARKING LOT
15	ULMUS AMERICANA	AMERICAN ELM	17.8	FAIR	REMOVE, GROWING UNDER #15, PARKING LOT
16	ULMUS AMERICANA	AMERICAN ELM	19.2	FAIR	REMOVE, PARKING LOT
17	STUMP				REMOVE
18	WILLOW	SALIX	34.8	POOR	REMOVE, CONDITION
19	STUMP				REMOVE
20	ULMUS AMERICANA	AMERICAN ELM	62.2	FAIR	VISIBLE DEADWOOD PRESENT
21	ACER NEGUNDO	MANITOBA MAPLE	55.0	POOR	REMOVE, VISIBLE DEADWOOD PRESENT
22	ACER SACCHARINUM	SILVER MAPLE	52.0	GOOD	REMAIN, OUTSIDE PROPERTY LINE
23	ACER SACCHARINUM	SILVER MAPLE	78.0	POOR	REMOVE, PREVIOUSLY TOPPED, DEADWOOD

Notes

- The location of the existing trees were surveyed and provided by Landmark Engineering Inc.
- The species, size and condition of the existing trees was provided by Mr. Eric Chamberlain and by Joshua Tree Forestry Services.
- Care has been taken to obtain all information from reliable sources. All data has been verified insofar as possible. The consultant can neither guarantee nor be responsible for the accuracy of information provided by others.



Existing Tree Protection

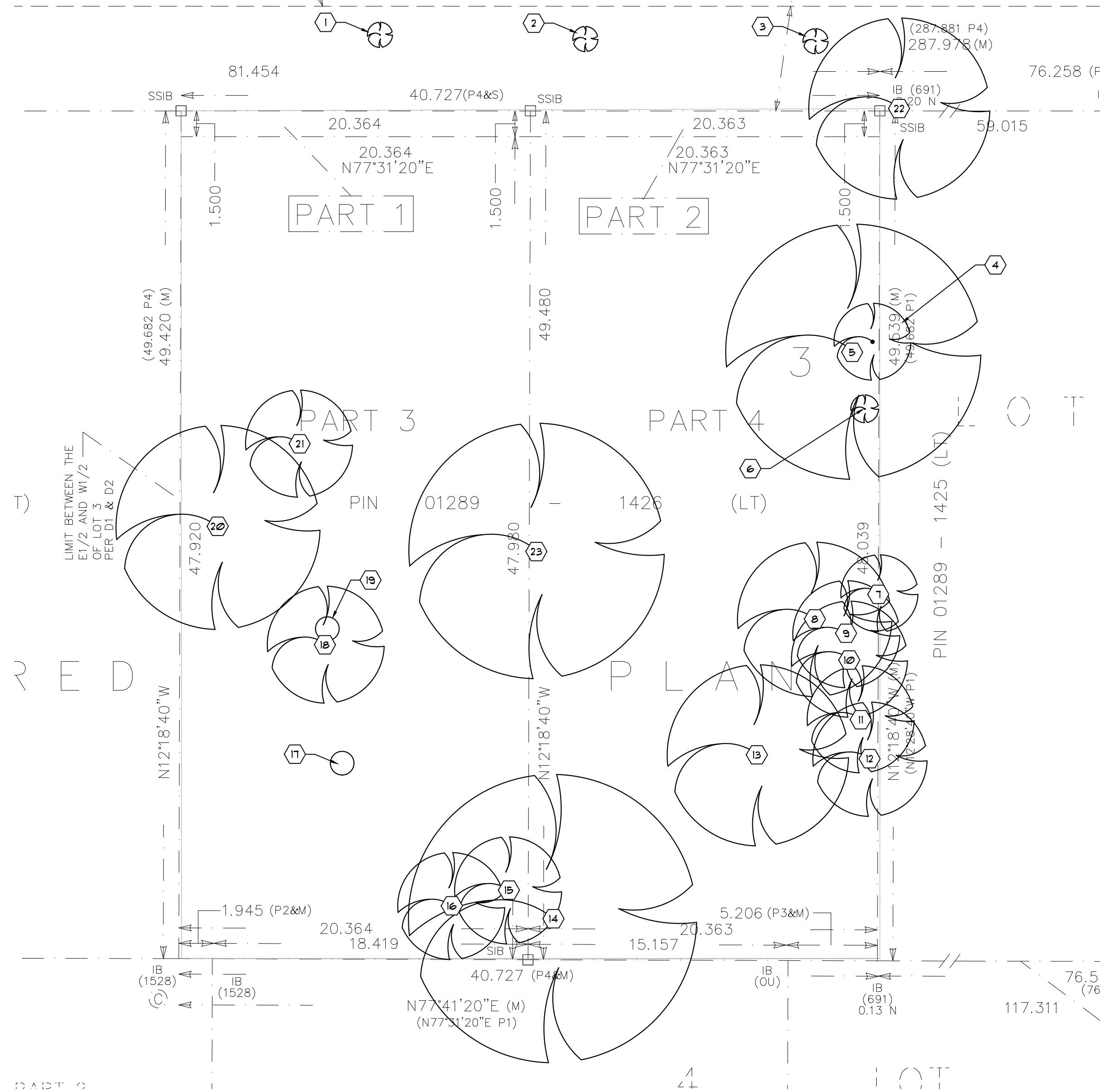
NTS

KNOWN AS CABANA ROAD WEST

(BY REGISTERED PLAN 1241)

(ROAD ALLOWANCE BETWEEN CONCESSIONS 3 & 4)

PIN 01288 - 0403 (LT)



EXISTING TREE INVENTORY AND PRESERVATION PLAN

ORIGINAL SHEET SIZE: 24" x 36"

SCALE 1:200

