

SIZE : 32 x 48 x 14

### Sidewall Detail

2x4 PURLINS @ 18" o.c.

APPROVED TRUSSES @ 2' o.c. Residential

2X6 FASCIA BOARD

2 2 x 10 PLATES

2 - 2X6 BLOCK

2 - 2X6 SWAY BRACING

6 x 6 POSTS @ 8' o.c.

29 GAUGE METAL CLADDING

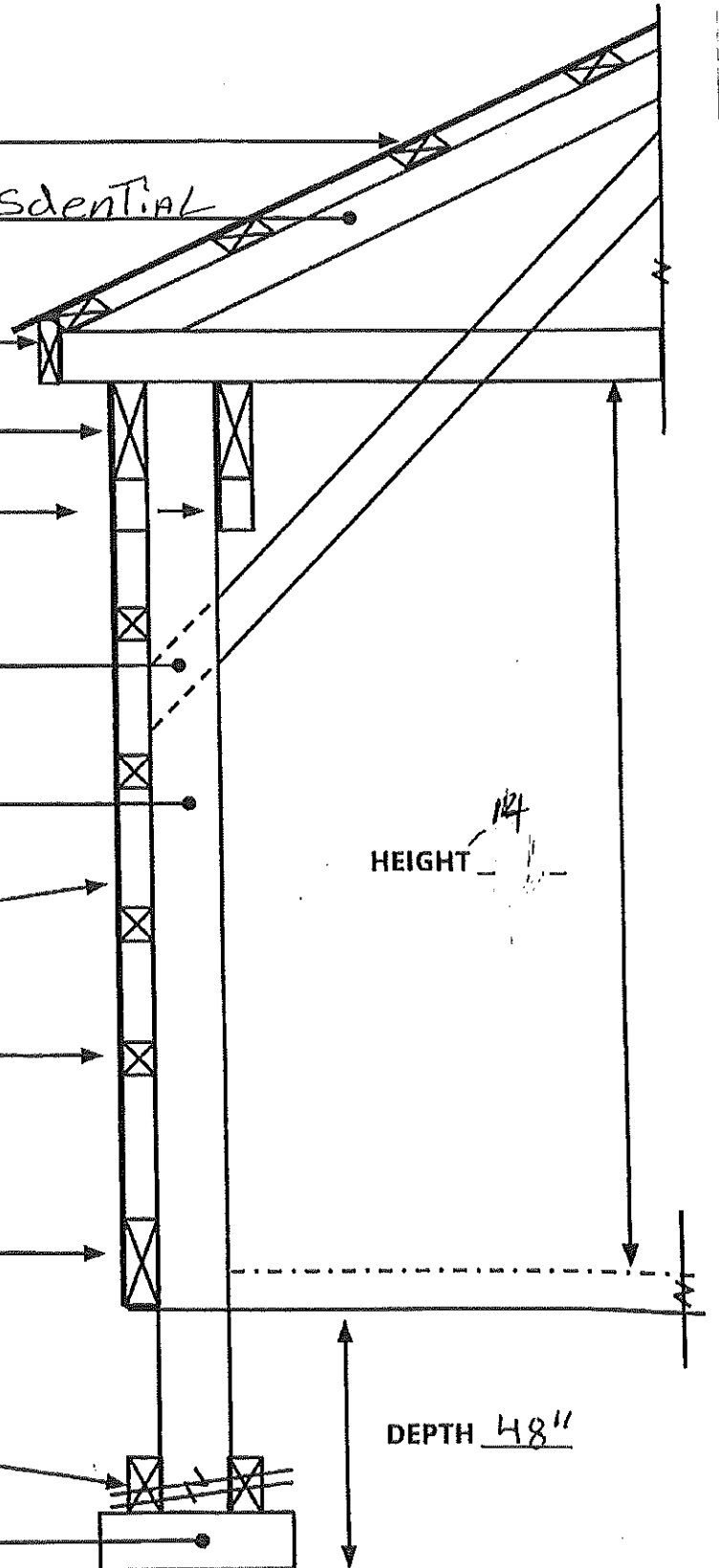
2X4 WALL GIRTS @ 2' o.c.

2 x 10 P.T. SPLASH BOARD

1 ROWS

2X6 UPLIFT BLOCK

20x10 CONC. PAD



HEIGHT 124

DEPTH 48"