



**ORIGINAL: 17 DECEMBER 2024**

**STAGE 1-2 ARCHAEOLOGICAL ASSESSMENT**

*291 Watson Avenue, Lot 128, Concession 1 Petite Cote, (Geographical Township of Sandwich), City of Windsor, County of Essex (AMICK Corporate Project #2024-765/MCM File #P038-1553-2024)*

**SUBMITTED TO:**

**Ontario Ministry of Citizenship and Multiculturalism (MCM)**

Citizenship, Inclusion and Heritage Division, Heritage Branch

401 Bay Street, Suite 1700

Toronto, ON M7A 0A7

Tel: 416-212-8886

[Archaeology@Ontario.ca](mailto:Archaeology@Ontario.ca)

**SUBMITTED BY:**

**AMICK Consultants Limited**

Phone: (519) 432-4435

Email: [mcornies@amick.ca](mailto:mcornies@amick.ca)

[www.amick.ca](http://www.amick.ca)

**LICENSEE:**

Marilyn E. Cornies BA CAHP (P038)

**MCM FILE NUMBER:** P038-1553-2024

**CORPORATE PROJECT NUMBER:** 2024-765

**17 DECEMBER 2024**

## TABLE OF CONTENTS

TABLE OF CONTENTS .....	I
PROJECT PERSONNEL.....	II
EXECUTIVE SUMMARY .....	III
<b>1.0 PROJECT CONTEXT .....</b>	<b>1</b>
1.1 DEVELOPMENT CONTEXT.....	1
1.2 HISTORICAL CONTEXT .....	1
1.2.1 PRE-CONTACT LAND-USE OUTLINE.....	1
1.2.1.1 PALEO PERIOD (APPROXIMATELY 9000-7500 B.C.) .....	2
1.2.1.2 ARCHAIC PERIOD (APPROXIMATELY 8000-1000 B.C.) .....	2
1.2.1.3 WOODLAND PERIOD (APPROXIMATELY 1000 B.C.-1650 A.D.) .....	3
1.2.2 POST-CONTACT LAND USE OUTLINE .....	4
1.2.3 SUMMARY OF HISTORICAL CONTEXT .....	5
1.3 ARCHAEOLOGICAL CONTEXT .....	6
1.3.1 PHYSIOGRAPHIC REGION .....	6
1.3.2 SURFACE WATER.....	6
1.3.3 LITHIC SOURCES .....	6
1.3.4 REGISTERED ARCHAEOLOGICAL SITES .....	6
1.3.4.1 PRE-CONTACT REGISTERED SITES .....	7
1.3.4.2 POST-CONTACT REGISTERED SITES .....	7
1.3.4.3 REGISTERED SITES OF UNKNOWN CULTURAL AFFILIATION.....	7
1.3.5 PREVIOUS ARCHAEOLOGICAL ASSESSMENTS .....	8
1.3.5.2 PREVIOUS REGIONAL ARCHAEOLOGICAL POTENTIAL MODELLING .....	8
1.3.6 HISTORIC PLAQUES .....	9
1.3.7 SUMMARY OF ARCHAEOLOGICAL CONTEXT .....	9
<b>2.0 FIELD WORK METHODS AND WEATHER CONDITIONS .....</b>	<b>9</b>
2.1 INTRODUCTION.....	9
2.2 CONFIRMATION OF DISTURBANCE .....	10
<b>3.0 RECORD OF FINDS .....</b>	<b>10</b>
3.1 INTRODUCTION.....	10
<b>4.0 ANALYSIS AND CONCLUSIONS.....</b>	<b>10</b>
4.1 STAGE 1 ANALYSIS AND CONCLUSIONS.....	10
4.1.1 CHARACTERISTICS INDICATING ARCHAEOLOGICAL POTENTIAL .....	10
4.1.2 CHARACTERISTICS INDICATING REMOVAL OF ARCHAEOLOGICAL POTENTIAL .....	12
4.1.3 SUMMARY OF ARCHAEOLOGICAL POTENTIAL .....	12
4.2 STAGE 2 ANALYSIS AND CONCLUSIONS.....	14
<b>5.0 RECOMMENDATIONS .....</b>	<b>14</b>
5.1 STAGE 1-2 RECOMMENDATIONS.....	14
<b>6.0 ADVICE ON COMPLIANCE WITH LEGISLATION .....</b>	<b>15</b>
<b>WORKS CITED .....</b>	<b>16</b>
<b>MAPS.....</b>	<b>18</b>
<b>IMAGES .....</b>	<b>25</b>

## **PROJECT PERSONNEL**

### **AMICK CONSULTANTS LIMITED PARTNERS**

Michael Henry (MCM Professional Archaeologist Licence #P058)  
Marilyn Cornies (MCM Professional Archaeologist Licence #P038)

### **PROJECT COORDINATOR**

Marilyn Cornies (MCM Professional Archaeologist Licence #P038)

### **PROJECT LICENSEE ARCHAEOLOGIST**

Marilyn Cornies (MCM Professional Archaeologist Licence #P038)

### **PROJECT FIELD DIRECTORS**

Marilyn Cornies (MCM Professional Archaeologist Licence #P038)

### **PROJECT FIELD ASSISTANTS**

Michael Henry (MCM Professional Archaeologist Licence #P058)

### **PROJECT REPORT PREPARATION & GRAPHICS**

Ashlee Poyntz

### **PROJECT PHOTOGRAPHY**

Marilyn Cornies (MCM Professional Archaeologist Licence #P038)  
Michael Henry (MCM Professional Archaeologist Licence #P058)

---

## EXECUTIVE SUMMARY

This report describes the results of the 2024 Stage 1-2 Archaeological Property Assessment of 291 Watson Avenue, Lot 128, Concession 1 Petite Cote (Geographical Township of Sandwich), City of Windsor, County of Essex, conducted by AMICK Consultants Limited. This assessment was undertaken as a requirement under the Planning Act (RSO 1990) and was conducted under Professional Archaeologist License #P038 issued to Marilyn Cornies by the Minister of Citizenship and Multiculturalism (MCM) for the Province of Ontario. All work was conducted in conformity with Ontario Ministry of Tourism and Culture (MTC) Standards and Guidelines for Consultant Archaeologists (MTC 2011) and the Ontario Heritage Act (RSO 1990a).

The entirety of the study area is approximately 0.11 hectares (ha) in area and includes within an existing residential dwelling with associated lawn and driveway. The study area is bounded on the east by Watson Avenue, to the south By Clairview Avenue and existing residential areas to the north and west. AMICK Consultants Limited was engaged by the proponent to undertake a Stage 1-2 Archaeological Property Assessment of lands potentially affected by the proposed undertaking and was granted permission to carry out archaeological fieldwork. Following the criteria outlined by MCM (2011) for determining archaeological potential, portions of the study area were determined as having archaeological potential for Post-contact archaeological resources. Consequently, this report is being prepared in advance of the planning process for this property.

The entirety of the study area was subject to property inspection and photographic documentation concurrently with the Stage 2 Property Assessment which consisted of test pit survey at a five-metre interval to confirm the absence or presence of disturbance on 02 November 2024. All records, documentation, field notes, photographs, and artifacts (as applicable) related to the conduct and findings of these investigations are held at the corporate offices of AMICK Consultants Limited until such time that they can be transferred to an agency or institution approved by the MCM on behalf of the government and citizens of Ontario.

As a result of the Stage 2 Property Assessment of the study area, no archaeological resources were encountered. Consequently, the following recommendations are made:

1. *No further archaeological assessment of the study area is warranted.*
2. *The Provincial interest in archaeological resources with respect to the proposed undertaking has been addressed.*
3. *The proposed undertaking is clear of any archaeological concern.*

---

## 1.0 PROJECT CONTEXT

### 1.1 DEVELOPMENT CONTEXT

This report describes the results of the 2024 Stage 1-2 Archaeological Property Assessment of 291 Watson Avenue, Lot 128 Concession 1 Petite Cote, (Geographical Township of Sandwich), City of Windsor, County of Essex, conducted by AMICK Consultants Limited. This assessment was undertaken as a requirement under the Planning Act (RSO 1990) and was conducted under Professional Archaeologist License #P038 issued to Marilyn Cornies by the Minister of Citizenship and Multiculturalism (MCM) for the Province of Ontario. All work was conducted in conformity with Ontario Ministry of Tourism and Culture (MTC) Standards and Guidelines for Consultant Archaeologists (MTC 2011) and the Ontario Heritage Act (RSO 1990a).

The entirety of the study area is approximately 0.11 hectares (ha) in area and includes within an existing residential dwelling with associated lawn and driveway. The study area is bounded on the east by Watson Avenue, to the south by Clairview Avenue and existing residential areas to the north and west. AMICK Consultants Limited was engaged by the proponent to undertake a Stage 1-2 Archaeological Property Assessment of lands potentially affected by the proposed undertaking and was granted permission to carry out archaeological fieldwork. Following the criteria outlined by MCM (2011) for determining archaeological potential, portions of the study area were determined as having archaeological potential for Post-contact archaeological resources. Consequently, this report is being prepared in advance of the planning process for this property.

The entirety of the study area was subject to property inspection and photographic documentation concurrently with the Stage 2 Property Assessment which consisted of test pit survey at a five-metre interval to confirm disturbance on 02 November 2024. All records, documentation, field notes, photographs, and artifacts (as applicable) related to the conduct and findings of these investigations are held at the corporate offices of AMICK Consultants Limited until such time that they can be transferred to an agency or institution approved by the MCM on behalf of the government and citizens of Ontario.

The proposed development of the study area includes nine units, a parking lot with ten parking spaces, two bicycle spaces, a refuse area, and landscape alterations. A preliminary plan of the proposed development has been submitted together with this report to MCM for review and reproduced within this report as Map 4.

### 1.2 HISTORICAL CONTEXT

#### 1.2.1 PRE-CONTACT LAND-USE OUTLINE

Table 1 illustrates the chronological development of cultures within southern Ontario prior to the arrival of European cultures to the area at the beginning of the 17<sup>th</sup> century. This general cultural outline is based on archaeological data and represents a synthesis and summary of

research over a long period of time. It is necessarily generalizing and is not necessarily representative of the point of view of all researchers or stakeholders. It is offered here as a rough guideline and as a very broad outline to illustrate the relationships of broad cultural groups and time periods.

**TABLE 1 PRE-CONTACT CULTURAL CHRONOLOGY FOR SOUTHERN ONTARIO**

<b>Years ago</b>	<b>Period</b>	<b>Southern Ontario</b>
250	Terminal Woodland	Ontario and St. Lawrence Iroquois Cultures
1000 2000	Initial Woodland	Princess Point, Saugeen, Point Peninsula, and Meadowood Cultures
3000 4000 5000 6000	Archaic	Laurentian Culture
7000 8000 9000 10000 11000	Paleo	Plano and Clovis Cultures
		(Wright 1972)

What follows is an outline of Aboriginal occupation in the area during the Pre-Contact Era from the earliest known period, about 9000 B.C. up to approximately 1650 AD.

#### **1.2.1.1 PALEO PERIOD (APPROXIMATELY 9000-7500 B.C.)**

North of Lake Ontario, evidence suggests that early occupation began around 9000 B.C. People probably began to move into this area as the glaciers retreated and glacial lake levels began to recede. The early occupation of the area probably occurred in conjunction with environmental conditions that would be comparable to modern Sub-Arctic conditions. Due to the great antiquity of these sites, and the relatively small populations likely involved, evidence of these early inhabitants is sparse and generally limited to tools produced from stone or to by-products of the manufacture of these implements.

#### **1.2.1.2 ARCHAIC PERIOD (APPROXIMATELY 8000-1000 B.C.)**

By about 8000 B.C. the gradual transition from a post glacial tundra-like environment to an essentially modern environment was largely complete. Prior to European clearance of the landscape for timber and cultivation, the area was characterized by forest. The Archaic Period is the longest and the most apparently stable of the cultural periods identified through archaeology. The Archaic Period is divided into the Early, Middle and Late Sub-Periods, each represented by specific styles in projectile point manufacture. Many more sites of this period are found throughout Ontario, than of the Paleo Period. This is probably a reflection of two factors: the longer period of time reflected in these sites, and a greater population density. The greater population was likely the result of a more diversified subsistence strategy carried out in an environment offering a greater variety of abundant resources (Smith 2002:58-59).

Current interpretations suggest that the Archaic Period populations followed a seasonal cycle of resource exploitation. Although similar in concept to the practices speculated for the big game hunters of the Paleo Period, the Archaic populations utilized a much broader range of resources, particularly with respect to plants. It is suggested that in the spring and early summer, bands would gather at the mouths of rivers and at rapids to take advantage of fish spawning runs. Later in the summer and into the fall season, smaller groups would move to areas of wetlands to harvest nuts and wild rice. During the winter, they would break into yet smaller groups probably based on the nuclear family and perhaps some additional relatives to move into the interior for hunting. The result of such practices would be to create a distribution of sites across much of the landscape (Smith 2002: 59-60).

The material culture of this period is much more extensive than that of the Paleo First Nations. Stylistic changes between Sub-Periods and cultural groups are apparent, although the overall quality in production of chipped lithic tools seems to decline. This period sees the introduction of ground stone technology in the form of celts (axes and adzes), manos and metates for grinding nuts and fibres, and decorative items like gorgets, pendants, birdstones, and bannerstones. Bone tools are also evident from this time period. Their presence may be a result of better preservation from these more recent sites rather than a lack of such items in earlier occupations. In addition, copper and exotic chert types appear during the period and are indicative of extensive trading (Smith 2002: 58-59).

### ***1.2.1.3      WOODLAND PERIOD (APPROXIMATELY 1000 B.C.-1650 A.D.)***

The primary difference in archaeological assemblages that differentiates the beginning of the Woodland Period from the Archaic Period is the introduction of ceramics to Ontario populations. This division is probably not a reflection of any substantive cultural changes, as the earliest sites of this period seem to be in all other respects a continuation of the Archaic mode of life with ceramics added as a novel technology. The seasonally based system of resource exploitation and associated population mobility persists for at least 1500 years into the Woodland Period (Smith 2002: 61-62).

The Early Woodland Sub-Period dates from about 1000-400 B.C. Many of the artifacts from this time are similar to the late Archaic and suggest a direct cultural continuity between these two temporal divisions. The introduction of pottery represents an entirely new technology that was probably acquired through contact with more southerly populations from which it likely originates (Smith 2002:62).

The Middle Woodland Sub-Period dates from about 400 B.C.-800 A.D. Within the region including the study area, a complex emerged at this time termed "Point Peninsula." Point Peninsula pottery reflects a greater sophistication in pottery manufacture compared with the earlier industry. The paste and temper of the new pottery is finer and new decorative techniques such as dentate and pseudo-scallop stamping appear. There is a noted Hopewellian influence in southern Ontario populations at this time. Hopewell influences from south of the Great Lakes include a widespread trade in exotic materials and the presence of distinct Hopewell style artifacts such as platform pipes, copper or silver panpipe



covers and shark's teeth. The populations of the Middle Woodland participated in a trade network that extended well beyond the Great Lakes Region.

The Late Woodland Sub-Period dates from about 500-1650 A.D. The Late Woodland includes four separate phases: Princess Point, Early Ontario Iroquoian, Middle Ontario Iroquoian and Late Ontario Iroquoian.

The Princess Point phase dates to approximately 500-1000 A.D. Pottery of this phase is distinguished from earlier technology in that it is produced by the paddle method instead of coil and the decoration is characterized by the cord wrapped stick technique. Ceramic smoking pipes appear at this time in noticeable quantities. Princess Point sites cluster along major stream valleys and wetland areas. Maize cultivation is introduced by these people to Ontario. These people were not fully committed to horticulture and seemed to be experimenting with maize production. They generally adhere to the seasonal pattern of occupation practiced by earlier occupations, perhaps staying at certain locales repeatedly and for a larger portion of each year (Smith 2002: 65-66).

The Early Ontario Iroquoian stage dates to approximately 950-1050 A.D. This stage marks the beginning of a cultural development that led to the historically documented Ontario Iroquoian groups that were first contacted by Europeans during the early 1600s (Petun, Neutral, and Huron). At this stage formal semi-sedentary villages emerge. The Early stage of this cultural development is divided into two cultural groups in southern Ontario. The areas occupied by each being roughly divided by the Niagara Escarpment. To the west were located the Glen Meyer populations, and to the east were situated the Pickering people (Smith 2002: 67).

The Middle Ontario Iroquoian stage dates to approximately 1300-1400 A.D. This stage is divided into two sub-stages. The first is the Uren sub-stage lasting from approximately 1300-1350 A.D. The second of the two sub-stages is known as the Middleport sub-stage lasting from roughly 1350-1400 A.D. Villages tend to be larger throughout this stage than formerly (Smith 2002: 67).

The Late Ontario Iroquoian stage dates to approximately 1400-1650 A.D. During this time the cultural divisions identified by early European explorers are under development and the geographic distribution of these groups within southern Ontario begins to be defined.

### ***1.2.2 POST-CONTACT LAND USE OUTLINE***

Essex County was among the first areas of Ontario to be settled. The original settlers were primarily disbanded French soldiers or former fur traders. Permanent settlement began on what was to become the Canadian side of the Detroit River in 1747, at this time these lands were largely inhabited by native peoples, both the Huron and the Ottawas had villages in the area (Connecting Windsor-Essex 2011).



Areas along Lake St. Clair and the Puce, Belle, and Ruscom rivers were originally occupied by the Huron and Wyandot First Nations. Some French colonists associated with Fort Detroit and the fur trade settled in this area in the 18th century. Their descendants are known as Fort Detroit French. They also came from Sandwich, where colonists had developed farms at what was known as Petite Côte, a bend in the Detroit River (Wikipedia 2019).

Sandwich was one of the original towns in Essex County and grew up across the river from the fort on the Detroit side. Although settlement had begun earlier the town of Sandwich was established in 1796 when the British gave up Detroit in accordance with the Jay Treaty. Many of the early settlers were Loyalists who chose to remain loyal to the crown and settled therefore on the Canadian side of the river. In 1845 an act to better define counties and townships in Ontario defined the Boundaries of the Township of Sandwich (Connecting Windsor-Essex 2011).

Map 2 is a facsimile segment from the Map of the County of Essex, Ontario (Walling 1877). Map 2 illustrates the location of the study area and environs as of 1877. The study area is not shown to belong to anyone and no structures are shown to be within the study area. This map illustrates the Detroit River situated north of the study area. This demonstrates that the original property of which the study area is a part was settled by the time that the atlas data was compiled. Accordingly, it has been determined that there is potential for archaeological deposits related to early Post-contact settlement within the study area.

Map 3 is a facsimile segment of the Township of Sandwich map reproduced from Essex Supplement in Illustrated Atlas of the Dominion of Canada (Belden & Co. 1881). Map 3 illustrates the location of the study area and environs as of 1877. The study area is shown to belong to Joseph P. St. Louis; no structures are shown to be within the study area. Detroit River is demonstrated to be situated north of the study area. This demonstrates that the original property of which the study area is a part was settled by the time that the atlas data was compiled. Accordingly, it has been determined that there is potential for archaeological deposits related to early Post-contact settlement within the study area.

The study area lies within an area of potential in the Windsor Archeological Masterplan (ASI. et al) as illustrated in Map 7.

A plan of the study area is included within this report as Map 4. Current conditions encountered during the Stage 1-2 Property Assessment are illustrated in Maps 5 & 6.

### ***1.2.3 SUMMARY OF HISTORICAL CONTEXT***

The brief overview of readily available documentary evidence indicates that the study area is situated within an area that was close to historic transportation routes and in an area well populated during the nineteenth century and therefore has potential for sites relating to early Post-contact settlement in the region. However, it also appears that while the area was moving toward urban development by the fourth quarter of the 19<sup>th</sup> century, it was still predominantly rural in character and the likelihood of locating significant Post-contact

archaeological deposits of cultural heritage value or interest (CHVI) on a very small parcel of the original township lot is not likely.

### **1.3 ARCHAEOLOGICAL CONTEXT**

The study area is located in the City of Windsor and bounded on the north and west by existing residential, on the east by Watson Avenue and on the south by Clairview Avenue.

The study area consists of an existing residential dwelling with associated lawn and driveway.

#### ***1.3.1 PHYSIOGRAPHIC REGION***

The study area is within the St. Clair Clay Plains. The St. Clair clay plains cover 2, 270 square miles including the Counties of Essex, Kent and Lambton. The region has little relief varying between 575 and 700 feet a.s.l. in most areas. The counties of Lambton and Essex are till plains which have been smoothed by deposits of lacustrine clay which has settled in depressions as a result of glacial lakes Whittlesey and Warren which covered the whole area. A deep cover of overburden lies on the bedrock creating good conditions for vegetation (Chapman and Putnam 1984: 147-151).

#### ***1.3.2 SURFACE WATER***

The Detroit River is within 1kilometre of the study area.

#### ***1.3.3 LITHIC SOURCES***

The study area is located on the Dundee Formation which has outcrops of Selkirk chert. Selkirk chert is a member of the Middle Devonian Dundee Formation and is found in beds and lenses extending from the shores of Lake Erie into Manitoba along the Red River (Armstrong 2018: 72). Selkirk chert appears grey with hues of yellow, brown, and dark grey with a fine texture and dull to waxy lustre (Ibid: 72-73). Selkirk and Onondaga cherts share similarities in their colours and since this study relied on macroscopic analysis of lithic materials, there may be an error in representative chert frequencies. However, Selkirk cherts commonly contain bands of brown with less mottling than Onondaga cherts (Ibid: 72).

#### ***1.3.4 REGISTERED ARCHAEOLOGICAL SITES***

The Archaeological Sites Database administered by the MCM indicates that there is one (1) previously documented sites within 1 kilometre of the study area. However, it must be noted that this assumes the accuracy of information compiled from numerous researchers using different methodologies over many years. AMICK Consultants Limited assumes no responsibility for the accuracy of site descriptions, interpretations such as cultural affiliation, or location information derived from the Archaeological Sites Database administered by MCMS. In addition, it must also be noted that a lack of formerly documented sites does not

indicate that there are no sites present as the documentation of any archaeological site is contingent upon prior research having been conducted within the study area.

#### ***1.3.4.1 PRE-CONTACT REGISTERED SITES***

A summary of registered and/or known archaeological sites within a 1-kilometre radius of the study area was gathered from the Archaeological Sites Database, administered by MCMS. As a result, it was determined that no (0) archaeological sites relating directly to Pre-contact habitation/activity had been formally registered within the immediate vicinity of the study area. However, the lack of formally documented archaeological sites does not mean that Pre-contact people did not use the area; it more likely reflects a lack of systematic archaeological research in the immediate vicinity. Even in cases where one or more assessments may have been conducted in close proximity to a proposed landscape alteration, an extensive area of physical archaeological assessment coverage is required throughout the region to produce a representative sample of all potentially available archaeological data in order to provide any meaningful evidence to construct a pattern of land use and settlement in the past.

#### ***1.3.4.2 POST-CONTACT REGISTERED SITES***

A summary of registered and/or known archaeological sites within a 1-kilometre radius of the study area was gathered from the Archaeological Sites Database, administered by MCMS. As a result, it was determined that there is one (1) archaeological sites relating directly to Post-contact habitation/activity had been formally registered within the immediate vicinity of the study area. All previously registered Post-contact sites are briefly described below in Table 2:

**TABLE 2 POST-CONTACT SITES WITHIN 1KM**

<b>Borden #</b>	<b>Site Name</b>	<b>Time Period</b>	<b>Affinity</b>	<b>Site Type</b>
AbHr-61		Post-Contact	French	homestead, residential

None of the above noted archaeological sites are situated within 300 metres of the study area. Therefore, they have no impact on determinations of archaeological potential for further archaeological resources related to Post-contact activity and occupation with respect to the archaeological assessment of the proposed undertaking.

#### ***1.3.4.3 REGISTERED SITES OF UNKNOWN CULTURAL AFFILIATION***

A summary of registered and/or known archaeological sites within a 1-kilometre radius of the study area was gathered from the Archaeological Sites Database, administered by MCM. As a result, it was determined that no (0) archaeological sites of unknown cultural affiliation have been formally registered within the immediate vicinity of the study area.

### **1.3.5 PREVIOUS ARCHAEOLOGICAL ASSESSMENTS**

On the basis of information supplied by MCM, no archaeological assessments have been conducted within 50 metres of the study area. AMICK Consultants Limited assumes no responsibility for the accuracy of previous assessments, interpretations such as cultural affiliation, or location information derived from the Archaeological Sites Database administered by MCM. In addition, it must also be noted that the lack of formerly documented previous assessments does not indicate that no assessments have been conducted.

#### **1.3.5.2 PREVIOUS REGIONAL ARCHAEOLOGICAL POTENTIAL MODELLING**

The study area is situated within an area subject to an archaeological master plan or a similar regional overview study. *The City of Windsor Archaeological Master Plan* was adopted by Council on 19 October, 2005 (CRM Group Limited et al., 2005) and revised 2024 (ASI et. al. 2024). According to the plan:

*Due to differences in approach, separate models were developed for Precontact Native settlement and historic period settlement. The Native model is based primarily on environmental and geomorphological criteria which would have influenced Native peoples relationship to the landscape. Although social factors have also been taken into consideration, these are difficult to re-create or interpret given both the time and cultural differences that separate the researcher from the people who lived here in the more distant past. The Euro- Canadian model, which includes the post-contact Native occupation, is based on known settlement locations drawn from historic mapping and other archival sources. The archaeological potential map created through the combination of the two models was subsequently screened to identify areas for which the physical landscape had been extensively modified or disturbed as a result of development. Since land that has been extensively disturbed retains little or no archaeological integrity, it was identified and excluded from the final archaeological potential map.*

(CRM Group Limited et al., 2005: Executive Summary – 2)

Additionally, active archaeological sites were included in the modelling put forward by the plan (CRM Group Limited et al., 2005: Executive Summary – 2). The archaeological First Nations (“Native”) potential modelling considers soil type, glacial geomorphology, drainage and topography, proximity to water and aboriginal transportation networks (CRM Group Limited et al., 2005: Section 4.2). The Euro-Canadian site potential modelling considers historic maps and other historical documentation of settlement patterns, as well as the proximity to previously registered archaeological sites. The resulting potential map shows that the current study area is within an area of high/low composite archaeological potential.

### **1.3.6 HISTORIC PLAQUES**

There are no relevant plaques associated with the study area, which would suggest an activity or occupation within, or near, the study area that may indicate potential for associated archaeological resources of significant CHVI.

### **1.3.7 SUMMARY OF ARCHAEOLOGICAL CONTEXT**

The study area consists of an existing residential structure with associated lawn and driveway. A significant proportion of the study area does exhibit archaeological potential and therefore a Stage 2 Property Assessment is required.

Background research also indicates that the study area is situated in the St. Clair Clay Plain physiographic region, which is characterized by a deep cover of overburden lying on the bedrock. In addition, the study area is located on the Dundee Formation which has outcrops of Selkirk chert.

A total of one (1) previously registered archaeological sites have been documented within 1km of the study area. The site is a Post-contact site. The site is located within 1 km of the study area and, therefore, demonstrate archaeological potential for further archaeological resources of Post-contact activity and occupation with respect to the archaeological assessment of the current study area.

The study area is situated within an area subject to *The City of Windsor Archaeological Master Plan*. There are no relevant plaques associated with the study area.

The study area has potential for archaeological resources of Post-contact origins based on proximity to areas of documented historic settlement.

## **2.0 FIELD WORK METHODS AND WEATHER CONDITIONS**

### **2.1 INTRODUCTION**

A property inspection was carried out in compliance with Standards and Guidelines for Consultant Archaeologists (MTC 2011) to document the existing conditions of the study area to facilitate the Stage 2 Property Assessment. All areas of the study area were visually inspected and select features were photographed as a representative sample of each area defined within Maps 5 and 6. Observations made of conditions within the study area at the time of the inspection were used to inform the requirement for Stage 2 Property Assessment for portions of the study area as well as to aid in the determination of appropriate Stage 2 Property Assessment strategies. The locations from which photographs were taken and the directions toward which the camera was aimed for each photograph are illustrated in Maps 5 & 6 of this report.

The Stage 2 Assessment of the study area was carried out on 02 November 2024 and consisted of test pit survey at a five-metre interval to confirm disturbance which was

conducted in compliance with the Standards and Guidelines for Consultant Archaeologists, section 2.1.8: Property Survey to Confirm Previous Disturbance (MTC 2011). Weather conditions were appropriate for the necessary fieldwork required to complete the Stage 2 Property Assessment and to create the documentation appropriate to this study.

## **2.2 CONFIRMATION OF DISTURBANCE**

Approximately 95% ha of the study area was subject to test pit survey at 5m intervals to confirm the absence or presence of disturbance. The remaining 5% included the residential dwelling. The gravel driveway was less than 5 metres in width and incorporated within the 5-metre grid. Areas of suspected disturbance within the study area consists of an area identified as disturbance from the construction of the house and landscape grading. AMICK Consultants Limited tested the suspected disturbed area at a 5-metre interval to confirm the absence or presence of disturbance in a manner consistent with the objectives to ensure that the area is accurately delimited and properly identified. This procedure demonstrated that the portions of the property exhibited topsoil mottled with subsoil. However, the study area was assessed at a five-metre interval to include the disturbed and undisturbed test pits.

All test pits were excavated within 1m of all built structures, were at least 30cm in diameter and were excavated to examine for evidence of fill as it was clearly evident the property was disturbed. All soils were screen through mesh no greater than 6mm and all test pits were backfilled. All work was photo documented. Maps 5 & 6 of this report illustrate the Stage 2 Assessment methodology within the study area.

## **3.0 RECORD OF FINDS**

### **3.1 INTRODUCTION**

As a result of the Stage 1-2 Assessment of the study area, no archaeological resources of any description were encountered.

The documentation produced during the field investigation conducted in support of this report includes: one sketch map, one page of photo log, one page of field notes, and 7 digital photographs.

## **4.0 ANALYSIS AND CONCLUSIONS**

### **4.1 STAGE 1 ANALYSIS AND CONCLUSIONS**

#### **4.1.1 CHARACTERISTICS INDICATING ARCHAEOLOGICAL POTENTIAL**

Section 1.3.1 of the Standards and Guidelines for Consultant Archaeologists specifies the property characteristics that indicate archaeological potential (MTC 2011). Factors that indicate archaeological potential are features of the local landscape and environment that may have attracted people to either occupy the land or to conduct activities within the study area. One or more of these characteristics found to apply to a study area would necessitate a



Stage 2 Property Assessment to determine if archaeological resources are present. These characteristics include:

- 1) Within 300m of Previously Identified Archaeological Sites
- 2) Within 300m of Primary Water Sources (e.g., lakes, rivers, streams, and creeks)
- 3) Within 300m of Secondary Water Sources (e.g., intermittent streams and creeks, springs, marshes, and swamps)
- 4) Within 300 m of Features Indicating Past Water Sources (e.g., glacial lake shorelines indicated by the presence of raised sand or gravel beach ridges, relic river or stream channels indicated by clear dip or swale in the topography, shorelines of drained lakes or marshes, and cobble beaches)
- 5) Within 300m of an Accessible or Inaccessible Shoreline (e.g., high bluffs, swamp, or marsh fields by the edge of a lake, sandbars stretching into marsh)
- 6) Elevated Topography (e.g., eskers, drumlins, large knolls, and plateaux)
- 7) Pockets of Well-drained Sandy Soil, especially near areas of heavy soil or rocky ground.
- 8) Distinctive Land Formations that might have been special or spiritual places, such as waterfalls, rock outcrops, caverns, mounds, and promontories and their bases. There may be physical indicators of their use, such as burials, structures, offerings, rock paintings or carvings.
- 9) Resource Areas, including:
  - food or medicinal plants (e.g., migratory routes, spawning areas, and prairie)
  - scarce raw materials (e.g., quartz, copper, ochre or outcrops of chert)
  - resources of importance to early Post-contact industry (e.g., logging, prospecting, and mining)
- 10) Within 300m of Areas of Early Post-contact Settlement, including:
  - military or pioneer settlement (e.g., pioneer homesteads, isolated cabins, and farmstead complexes)
  - early wharf or dock complexes, pioneer churches and early cemeteries
- 11) Within 100m of Early Historical Transportation Routes (e.g., trails, passes, roads, railways, portage routes)
- 12) Heritage Property – A property listed on a municipal register or designated under the Ontario Heritage Act or is a federal, provincial, or municipal historic landmark or site.



- 13) Documented Historical or Archaeological Sites – property that local histories or informants have identified with possible archaeological sites, historical events, activities, or occupations. These are properties which have not necessarily been formally recognized or for which there is additional evidence identifying possible archaeological resources associated with historic properties in addition to the rationale for formal recognition.

The study area is southeast of a historic structure identified on the historic atlas maps of 1877 and 1881.

#### **4.1.2 CHARACTERISTICS INDICATING REMOVAL OF ARCHAEOLOGICAL POTENTIAL**

Section 1.3.2 of the Standards and Guidelines for Consultant Archaeologists specifies the property characteristics which indicate no archaeological potential or for which archaeological potential has been removed (MTC 2011). These characteristics include:

- 1) Quarrying
- 2) Major Landscaping Involving Grading Below Topsoil
- 3) Building Footprints
- 4) Sewage and Infrastructure Development

The study area consists of an existing residential dwelling with associated lawn and driveway.

#### **4.1.3 SUMMARY OF ARCHAEOLOGICAL POTENTIAL**

Table 3 below summarizes the evaluation criteria of the Ministry of Citizenship and Multiculturalism together with the results of the Stage 1 Background Study for the proposed undertaking. Based on the criteria, the property is deemed to have archaeological potential on the basis of proximity to historic settlement structures.

**TABLE 3 EVALUATION OF ARCHAEOLOGICAL POTENTIAL**

FEATURE OF ARCHAEOLOGICAL POTENTIAL		YES	NO	N/A	COMMENT
1	Known archaeological sites within 300m	Y			If Yes, potential determined
<b>PHYSICAL FEATURES</b>					
2	Is there water on or near the property?		N		If Yes, what kind of water?
2a	Primary water source within 300 m. (lakeshore, river, large creek, etc.)		N		If Yes, potential determined
2b	Secondary water source within 300 m. (stream, spring, marsh, swamp, etc.)		N		If Yes, potential determined
2c	Past water source within 300 m. (beach ridge, river bed, relic creek, etc.)		N		If Yes, potential determined
2d	Accessible or Inaccessible shoreline within 300 m. (high bluffs, marsh, swamp, sand bar, etc.)		N		If Yes, potential determined
3	Elevated topography (knolls, drumlins, eskers, plateaus, etc.)		N		If Yes, and Yes for any of 4-9, potential determined
4	Pockets of sandy soil in a clay or rocky area		N		If Yes and Yes for any of 3, 5-9, potential determined
5	Distinctive land formations (mounds, caverns, waterfalls, peninsulas, etc.)		N		If Yes and Yes for any of 3-4, 6-9, potential determined
<b>HISTORIC/PREHISTORIC USE FEATURES</b>					
6	Associated with food or scarce resource harvest areas (traditional fishing locations, agricultural/berry extraction areas, etc.)		N		If Yes, and Yes for any of 3-5, 7-9, potential determined.
7	Early Post-contact settlement area within 300 m.	Y			If Yes, and Yes for any of 3-6, 8-9, potential determined
8	Historic Transportation route within 100 m. (historic road, trail, portage, rail corridors, etc.)	Y			If Yes, and Yes for any 3-7 or 9, potential determined
9	Contains property designated and/or listed under the Ontario Heritage Act (municipal heritage committee, municipal register, etc.)		N		If Yes and, Yes to any of 3-8, potential determined
<b>APPLICATION-SPECIFIC INFORMATION</b>					
10	Local knowledge (local heritage organizations, Pre-contact, etc.)		N		If Yes, potential determined
11	Recent disturbance not including agricultural cultivation (post-1960-confirmed extensive and intensive including industrial sites, aggregate areas, etc.)		N		If Yes, no potential or low potential in affected part (s) of the study area.

If **YES** to any of 1, 2a-c, or 10 Archaeological Potential is **confirmed**

If **YES** to 2 or more of 3-9, Archaeological Potential is **confirmed**

If **YES** to 11 or No to 1-10 Low Archaeological Potential is **confirmed** for at least a portion of the study area.

## **4.2 STAGE 2 ANALYSIS AND CONCLUSIONS**

No archaeological sites or resources were found during the Stage 2 survey of the study area.

## **5.0 RECOMMENDATIONS**

### **5.1 STAGE 1-2 RECOMMENDATIONS**

As a result of the Stage 2 Property Assessment of the study area, no archaeological resources were encountered. Consequently, the following recommendations are made:

- 1. No further archaeological assessment of the study area is warranted;*
- 2. The Provincial interest in archaeological resources with respect to the proposed undertaking has been addressed;*
- 3. The proposed undertaking is clear of any archaeological concern.*

## **6.0 ADVICE ON COMPLIANCE WITH LEGISLATION**

While not part of the archaeological record, this report must include the following standard advisory statements for the benefit of the proponent and the approval authority in the land use planning and development process:

- a. *This report is submitted to the Minister of Citizenship and Multiculturalism as a condition of licensing in accordance with Part VI of the Ontario Heritage Act, R.S.O. 1990, c. 0.18. The report is reviewed to ensure that it complies with the standards and guidelines issued by the Minister, and that the archaeological fieldwork and report recommendations ensure the conservation, protection and preservation of the cultural heritage of Ontario. When all matters relating to archaeological sites within the project area of a development proposal have been addressed to the satisfaction of the Ministry of Citizenship and Multiculturalism, a letter will be issued by the ministry stating that there are no further concerns with regard to alterations to archaeological sites by the proposed development.*
- b. *It is an offence under Sections 48 and 69 of the Ontario Heritage Act for any party other than a licensed archaeologist to make any alteration to a known archaeological site or to remove any artifact or other physical evidence of past human use or activity from the site, until such time as a licensed archaeologist has completed archaeological fieldwork on the site, submitted a report to the Minister stating that the site has no further cultural heritage value or interest, and the report has been filed in the Ontario Public Register of Archaeological Reports referred to in Section 65.1 of the Ontario Heritage Act.*
- c. *Should previously undocumented archaeological resources be discovered, they may be a new archaeological site and therefore subject to Section 48 (1) of the Ontario Heritage Act. The proponent or person discovering the archaeological resources must cease alteration of the site immediately and engage a licensed archaeologist to carry out archaeological fieldwork, in compliance with sec. 48 (1) of the Ontario Heritage Act.*
- d. *The Cemeteries Act, R.S.O. 1990, c. C.4 and the Funeral, Burial and Cremation Services Act, 2002, S.O. 2002, c.33 (when proclaimed in force) require that any person discovering human remains must notify the police or coroner and the Registrar of Cemeteries at the Ministry of Consumer Services.*
- e. *Archaeological sites recommended for further archaeological fieldwork or protection remain subject to Section 48 (1) of the Ontario Heritage Act and may not be altered, or have artifacts removed from them, except by a person holding an archaeological licence.*

---

## WORKS CITED

- Archaeological Services Inc. and Fisher Archaeological Consulting, (2024). *The City of Windsor Archaeological Master Plan Study Report for the City of Windsor*. The City of Windsor Planning & Building Services Department (Planning Division), Windsor Ontario. Retrieved 10 November 2024 from URL <https://www.citywindsor.ca/residents/planning/Plans-and-Community-Information/Know-Your-Community/Heritage-Planning/Pages/Windsor-Archaeological-Master-Plan.aspx>.
- Armstrong, Mackenzie P. (2018). *The Development of a Digital Comparative Collection of Chert Types in Ontario and the Evaluation of Change in Accuracy and Confidence of Chert Type Identifications*. [Master's thesis, Trent University]. Retrieved Jan 6, 2021 from URL: <http://digitalcollections.trentu.ca/islandora/search/chert?type=dismax>.
- Belden, H. & Co. (1881). *Essex Supplement in Illustrated Atlas of the Dominion of Canada*. H. Belden & Co., Toronto.
- Chapman, L.J. & D.F. Putnam. (1984). *The Physiography of Southern Ontario (Third Edition)*. Ontario Geological Survey, Special Report #2. Ontario Ministry of Natural Resources, Toronto.
- Connecting Windsor-Essex. (2011). *Early History of Essex County*. Retrieved October 18, 2011 from URL: <http://www.windsor-essex.info/wps/wcm/connect/COE/COE/ABOUT+ESSEX+COUNTY/History+of+Essex+County/Early+History+of+Essex+County+%281792+-+1924%29/>.
- Cultural Resource Management Group Limited, Fisher Archaeological Consulting, Historic Horizon Inc., and Dillon Consulting Limited. (2005). *The City of Windsor Archaeological Master Plan Study Report for the City of Windsor*. The City of Windsor Planning & Building Services Department (Planning Division), Windsor Ontario. Retrieved 1 June, 2020 from URL <https://www.citywindsor.ca/residents/planning/Plans-and-Community-Information/Know-Your-Community/Heritage-Planning/Pages/Windsor-Archaeological-Master-Plan.aspx>.
- Esri (2019). "Topographic" [basemap]. Scale Not Given. "World Topographic Map." February 16, 2021. <http://www.arcgis.com/home/item.html?id=30e5fe3149c34df1ba922e6f5bbf808f> (February 16, 2021).
- Goel, Tarun (2013). Road Construction: History and Procedure. Bright Hub Engineering. Retrieved 24 May 2015 from URL: <http://www.brighthubengineering.com/structural-engineering/59665-road-construction-history-and-procedure/>
- Google Earth (Version 6.2.5200.0) [Software]. (2016). Available from <http://www.google.com/earth/index.html>.
- Ontario Heritage Act, RSO 1990a, Government of Ontario. (Queen's Printer, Toronto).
- Ontario Heritage Amendment Act, SO 2005, Government of Ontario. (Queen's Printer, Toronto).

Ontario Ministry of Tourism and Culture (MTC). (2011). *Standards and Guidelines for Consultant Archaeologist*. (Programs and Services Branch: Culture Programs Unit, Toronto).

Ontario Planning Act, RSO 1990b, Government of Ontario. (Queen's Printer, Toronto).

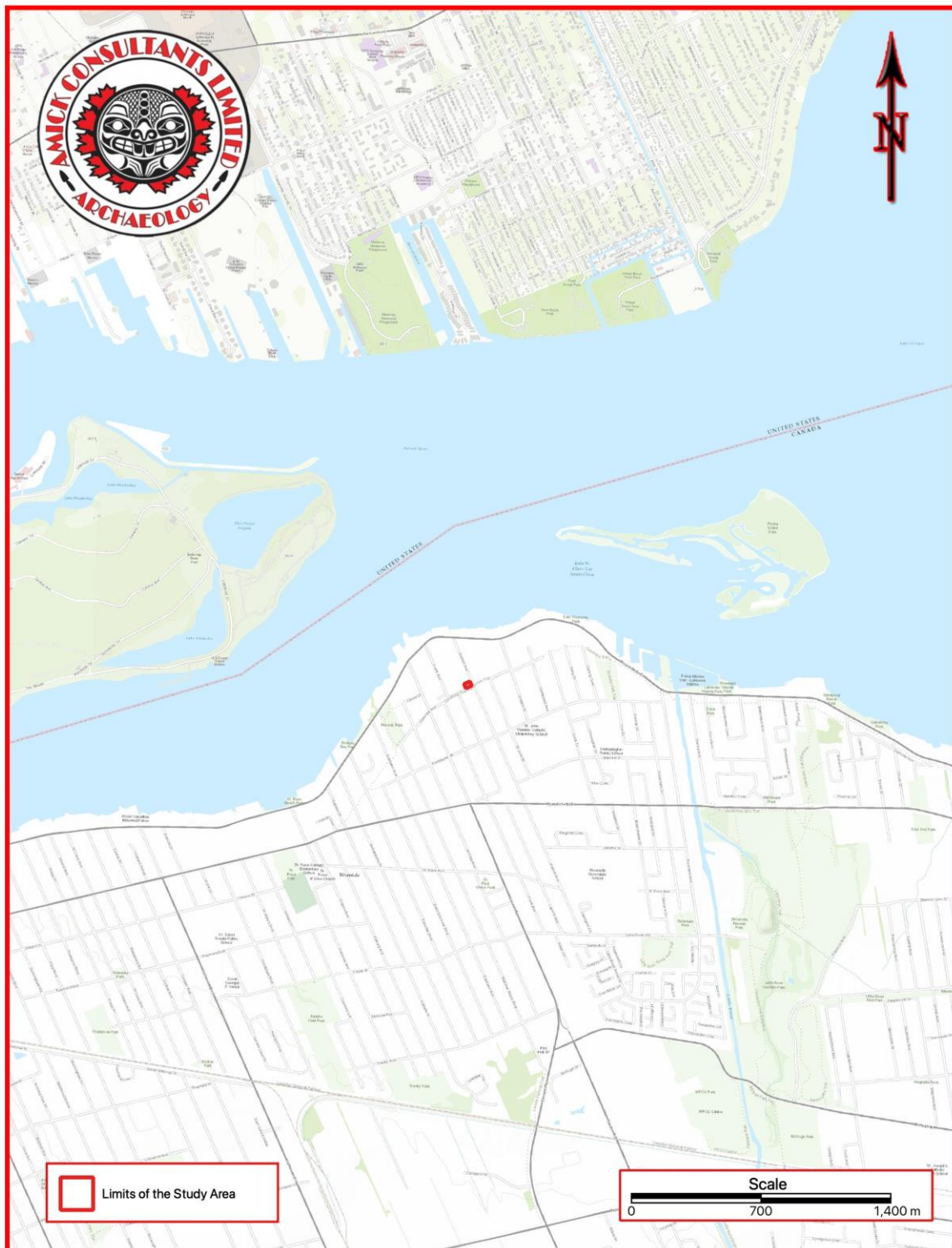
Provincial Policy Statement (2020). Government of Ontario. (Queen's Printer, Toronto).

Smith, David G. (2002). "Ten Thousand Years: Aboriginal Heritage in Mississauga." In *Mississauga: The First 10,000 Years*. Frank Dieterman, Ed. Mississauga Heritage Foundation, Eastendbooks, Toronto.

Walling, H. F. (1877). *Map of Essex County, Ontario*. (Toronto, Ontario: R. M. Tackabury, 1877).

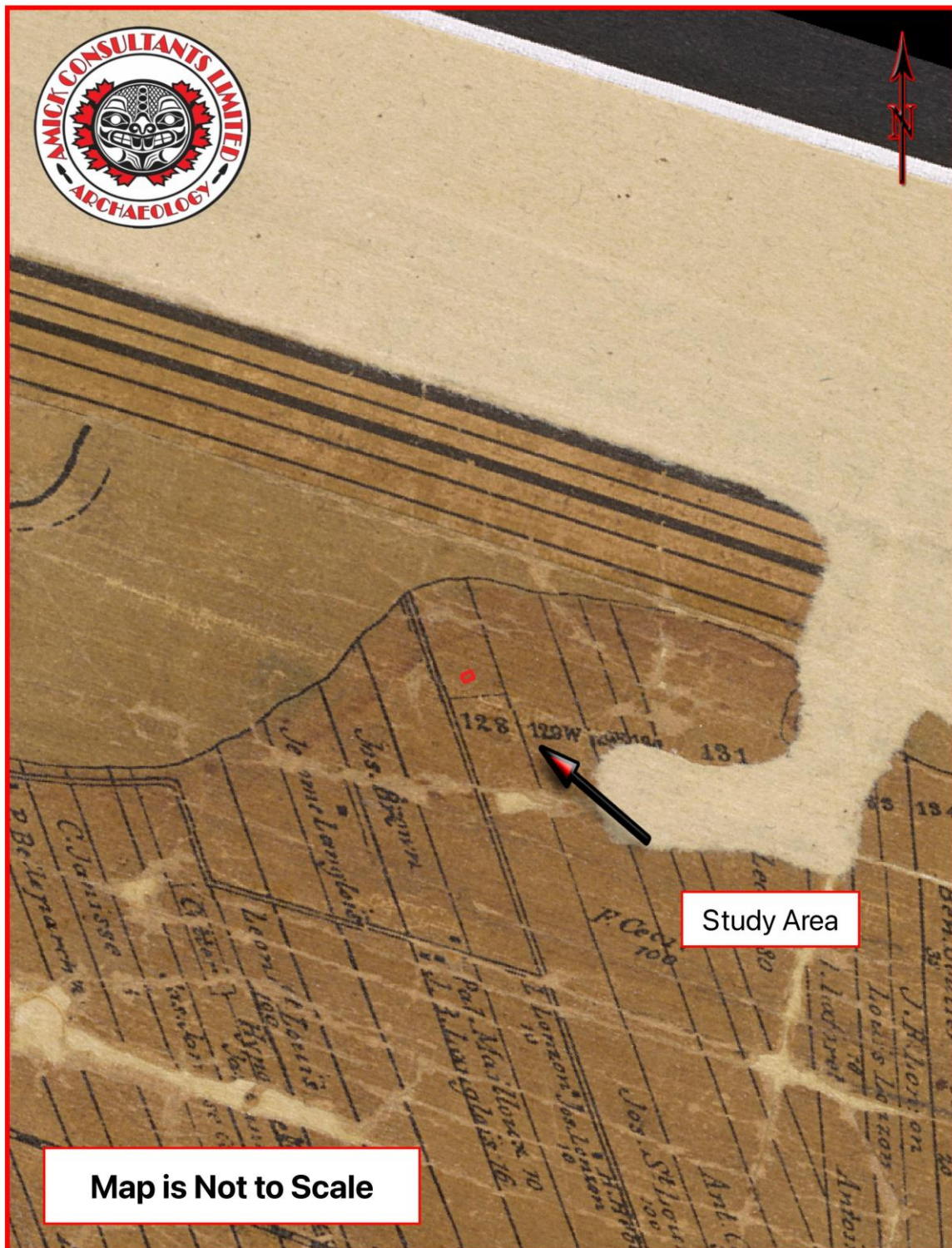
Wright, J.V. (1972). *Ontario Prehistory: an Eleven-thousand-year Archaeological Outline*. Archaeological Survey of Canada. National Museum of Man, Ottawa.

## MAPS



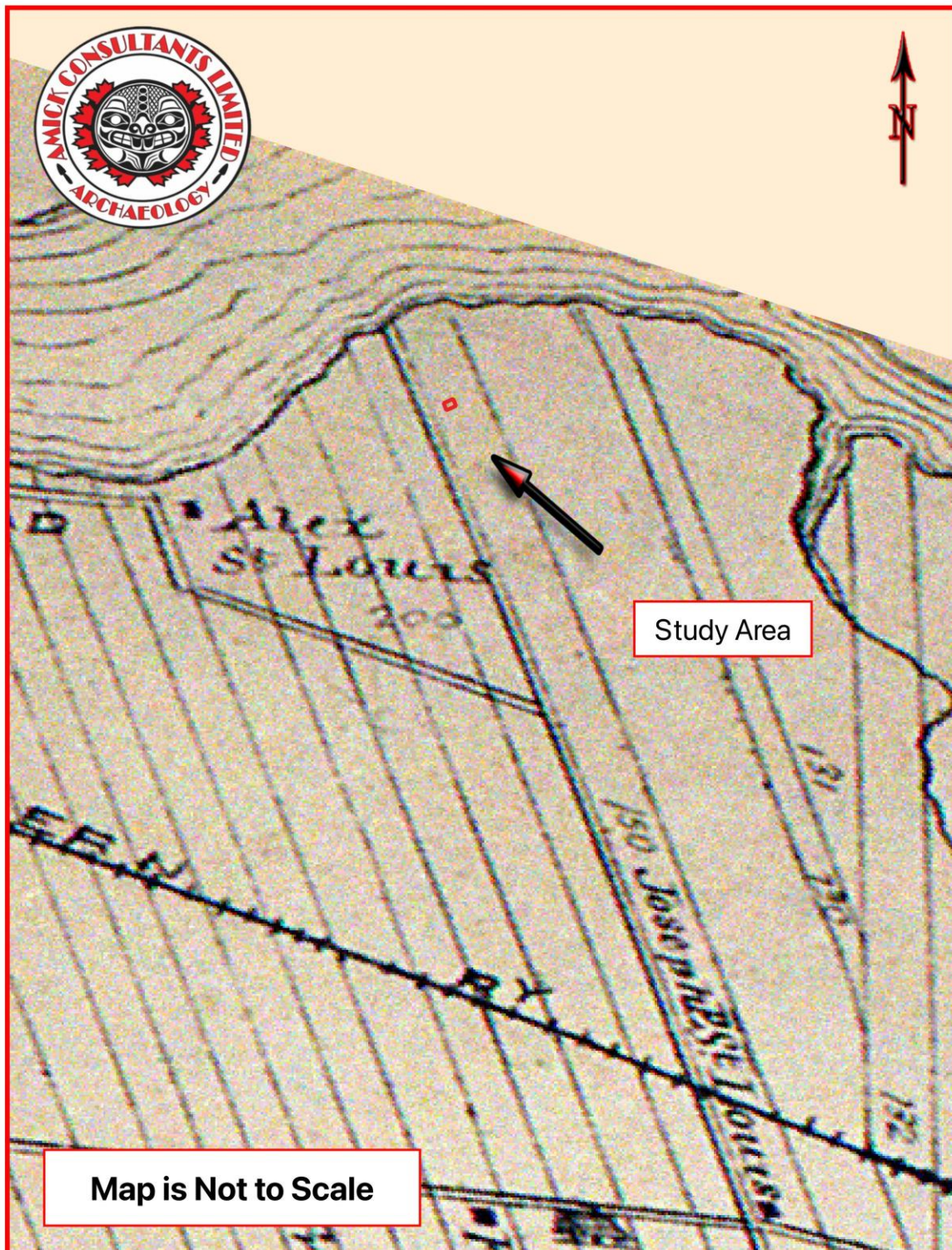
**MAP 1 LOCATION OF THE STUDY AREA (ESRI 2019)**





MAP 2 FACSIMILE SEGMENT OF THE MAP OF ESSEX COUNTY, ONTARIO  
(WALLING 1877)





MAP 3 FACSIMILE SEGMENT OF THE HISTORIC ATLAS MAP OF THE TOWNSHIP OF  
SANDWICH (BELDEN & CO. 1881)



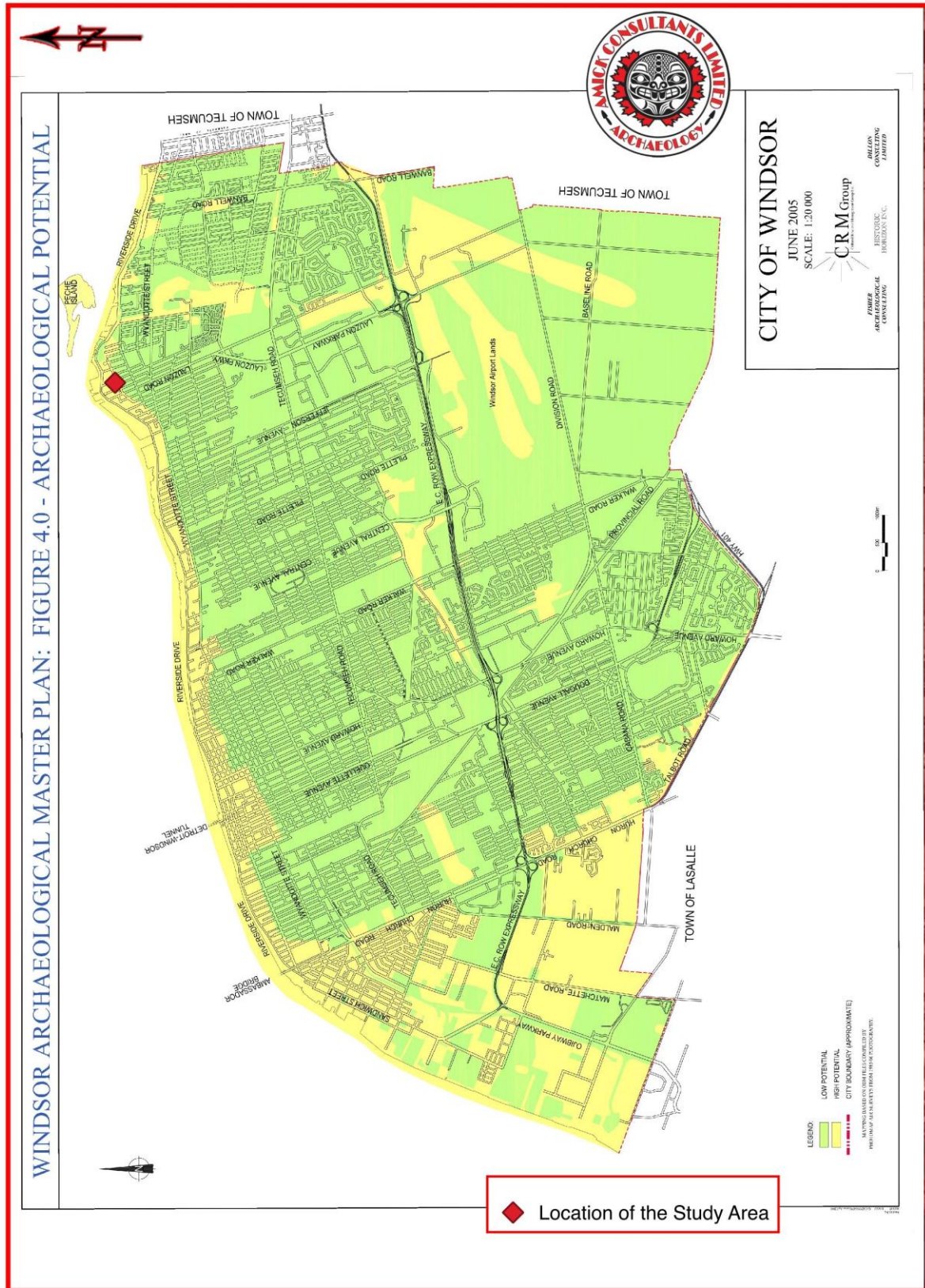




MAP 5 AERIAL PHOTO OF THE STUDY AREA (GOOGLE EARTH 2016)







**MAP 7 WINDSOR ARCHAEOLOGICAL MASTER PLAN**



**IMAGES**



**IMAGE 1 OVERVIEW TO TEST PIT SURVEY  
CONDITIONS**



**IMAGE 2 OVERVIEW OF TEST PIT SURVEY  
CONDITIONS**



**IMAGE 3 OVERVIEW OF TEST PIT SURVEY  
CONDITIONS**



**IMAGE 4 CREW CONDUCTING TEST PIT SURVEY**



**IMAGE 5 EXCAVATED TEST PIT**



**IMAGE 6 OVERVIEW OF TEST PIT SURVEY  
CONDITIONS**