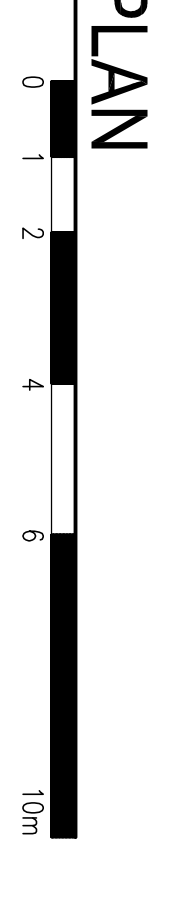


SITE SERVICING PLAN
 SCALE : 1:100



- SITE NOTES**
- CONTRACTOR TO VERIFY EX. SAN. POC TO VERIFY GATE OF PIPE. SEE MANHOLE 175mm. VERIFY LOCATION OF PIPE AND LOCATION OF POC. ABANDON AS B. OFFICE.
 - ALL SEWER PIPING TO BE RING-TYPE CASPATED SEWER PIPE (PEREGRINE) AS PER C.O.W. STANDARDS. RESTORE ASPHALT AND BUREAU DOCUMENTATION WITH LEAN CONCRETE U-FILL ON COMPACTED GRAVEL. X. COMP. TO 100% SHADU WITH COMPACTION TESTS COMPLETED BY A GEOTECHNICAL ENGINEER. SPREADING IN ACCORDANCE WITH CITY OF WINDSOR STANDARD SPECIFICATION 535.06.01(6). RESTORE ASPHALT AND BUREAU DOCUMENTATION WITH LEAN CONCRETE U-FILL ON COMPACTED GRAVEL. X. COMP. TO 100% SHADU WITH COMPACTION TESTS COMPLETED BY A GEOTECHNICAL ENGINEER. DETAIL ON SHEET C1.3.
 - DOWNPOUT CONNECTED TO POP-UP BRAIN ENTER. REMAINING.
 - ALL DOWNSPOUTS WHICH ARE ADJACENT TO HARDSCAPE SURFACES ARE TO BE EXTENDED UNDERGROUND BELOW THE SURFACE TO A POP UP BRAINWAZE FEET TO (100%) DOWNSPOUT SHADU LANSKAP. MANHOLE 175mm. DETAIL ON SHEET C1.3.
 - SEWERMAKS ON PRIVATE PROPERTY TO BE 100mm THK., 32 WPK. CONCRETE #/ 60x6/6 W.W.K. ON MINIMUM 250mm COMP. GRAVEL. X. INSTALL 13mm 1.0mm x 3.0mm DR. SAWDUSTS @ 1.5m O.C. AND 10. SIREWALK IN RIGHT-OF-WAY TO BE 75mm THK., 35 WPK. CONC. #/ 48 SHADU. INSTALL 13mm EXPANSION JOINTS #/ DECK-TO-RAMP (BY W.K. AT 10m O.C. AND 17mm x 38mm DR. SAWDUSTS @ 1.5m O.C.

- GENERAL NOTES:**
- THE DRAWING IS AN INSTRUMENT OF SERVICE ONLY AND IS NOT TO BE USED FOR ANY OTHER PURPOSE.
 - CONTRACTOR SHALL VERIFY AND BE RESPONSIBLE FOR ALL DIMENSIONS AND CONDITIONS SHOWN IN THESE DRAWINGS. DIMENSIONS SHALL NOT BE SCALED.
 - CONTRACTOR SHALL VERIFY AND BE RESPONSIBLE FOR ALL DIMENSIONS AND CONDITIONS SHOWN IN THESE DRAWINGS. DIMENSIONS SHALL NOT BE SCALED.
 - CONTRACTOR SHALL VERIFY AND BE RESPONSIBLE FOR ALL DIMENSIONS AND CONDITIONS SHOWN IN THESE DRAWINGS. DIMENSIONS SHALL NOT BE SCALED.
 - CONTRACTOR SHALL VERIFY AND BE RESPONSIBLE FOR ALL DIMENSIONS AND CONDITIONS SHOWN IN THESE DRAWINGS. DIMENSIONS SHALL NOT BE SCALED.
 - CONTRACTOR SHALL VERIFY AND BE RESPONSIBLE FOR ALL DIMENSIONS AND CONDITIONS SHOWN IN THESE DRAWINGS. DIMENSIONS SHALL NOT BE SCALED.
 - CONTRACTOR SHALL VERIFY AND BE RESPONSIBLE FOR ALL DIMENSIONS AND CONDITIONS SHOWN IN THESE DRAWINGS. DIMENSIONS SHALL NOT BE SCALED.

GENERAL CONTRACTOR TO CONTACT AND CO-ORDINATE LOCAL GAS UTILITY FOR NEW NATURAL GAS SERVICE.

LEGEND

BC	BOTTOM OF CURB	REL	RAINWATER LEADER w/ CLEANOUT
BP	BELL PEDESTAL	SN	SMALLER SEWER
BOL	BOLLARD	SN	SMALLER SEWER MANHOLE
B/O	BOTTOM OF DITCH	ST	STORM SEWER
B/SW	BOTTOM OF SWALE	ST	STORM SEWER MANHOLE
CB	CATCH BASIN	TC	TOP OF CURB
CBM	CATCH BASIN MANHOLE	T/C	TOP OF COVER
CO	CLEAN OUT	ULP	UTILITY POLE
CO	CONCRETE	W	WATER LEADER
CS	CORB STOP	W	WATER LEADER
CTV	CABLE TELEVISION	W	WATER LEADER
DS	DOWNPOUT	W	WATER LEADER
DS/DB	DOWNPOUT w/ DOWNPOUT	W	WATER LEADER
DWS	DOMESTIC WATER SERVICE	W	WATER LEADER
EH	FIRE HYDRANT	W	WATER LEADER
EM	GAS METER	W	WATER LEADER
GM	GUY WIRE	W	WATER LEADER
HP	HYDRO POLE	W	WATER LEADER
HP	HYDRO POLE	W	WATER LEADER
NW	SEWER INVERT	W	WATER LEADER
LS	LIGHT STANDARD	W	WATER LEADER
MW	WATER MANHOLE	W	WATER LEADER
MW	MONITORING WELL	W	WATER LEADER
OS LINE	BELL LINE	W	WATER LEADER
FRIBD LINE	SMALLER SEWER	W	WATER LEADER
SMALLER SEWER	SMALLER SEWER	W	WATER LEADER
WATER LINE	SMALLER SEWER	W	WATER LEADER
SEWER	SMALLER SEWER	W	WATER LEADER
SEWER AND SWALE	SMALLER SEWER	W	WATER LEADER
SMALLE	SMALLER SEWER	W	WATER LEADER
PROPERTY LINE	SMALLER SEWER	W	WATER LEADER

ELEVATIONS
 ELEVATIONS SHOWN ON THIS PLAN ARE IN FEET TO CANADIAN GEODETIC DATUM 1984. BENCH MARK #1 IS LOCATED ON THE SOUTH WALL, 1.9' WEST OF THE EAST WALL AND 2.8' ABOVE GROUND. ELEVATION 604.32' TOP OF FIRE HYDRANT IN FRONT OF THE SUBJECT PROPERTY.

BENCH MARK
 BENCH MARK #1 IS LOCATED ON THE SOUTH WALL, 1.9' WEST OF THE EAST WALL AND 2.8' ABOVE GROUND. ELEVATION 604.32'

SITE BENCH MARK
 TOP OF FIRE HYDRANT IN FRONT OF THE SUBJECT PROPERTY. ELEVATION 604.32'

COORDINATES

COORDINATES ARE DERIVED FROM GRID OBSERVATIONS USING THE CANADIAN NETWORK SERVICE, AND THE NAD83 (GRS) (2011) DATUM. COORDINATE VALUES ARE TO 4 DECIMAL PLACES IN ACCORDANCE WITH THE CANADIAN GEODETIC DATUM 1984. COORDINATE VALUES ARE TO 4 DECIMAL PLACES IN ACCORDANCE WITH THE CANADIAN GEODETIC DATUM 1984.

POINT ID	EASTING	NORTHING
GR-B	15372876.32	10953337.77
GR-A	15372876.32	10953337.77
GR-B	15372876.32	10953337.77

d.c. macklosky engineering Ltd.
 2650 Dundas Street East, Windsor, Ontario N9A 6P9
 Tel: (519) 371-8888

M.E. MACKLOSKEY
 LICENSED PROFESSIONAL ENGINEER
 No. 44474
 Mechanical Engineering

general notes:

- THE DRAWING IS AN INSTRUMENT OF SERVICE ONLY AND IS NOT TO BE USED FOR ANY OTHER PURPOSE.
- CONTRACTOR SHALL VERIFY AND BE RESPONSIBLE FOR ALL DIMENSIONS AND CONDITIONS SHOWN IN THESE DRAWINGS. DIMENSIONS SHALL NOT BE SCALED.
- CONTRACTOR SHALL VERIFY AND BE RESPONSIBLE FOR ALL DIMENSIONS AND CONDITIONS SHOWN IN THESE DRAWINGS. DIMENSIONS SHALL NOT BE SCALED.
- CONTRACTOR SHALL VERIFY AND BE RESPONSIBLE FOR ALL DIMENSIONS AND CONDITIONS SHOWN IN THESE DRAWINGS. DIMENSIONS SHALL NOT BE SCALED.
- CONTRACTOR SHALL VERIFY AND BE RESPONSIBLE FOR ALL DIMENSIONS AND CONDITIONS SHOWN IN THESE DRAWINGS. DIMENSIONS SHALL NOT BE SCALED.
- CONTRACTOR SHALL VERIFY AND BE RESPONSIBLE FOR ALL DIMENSIONS AND CONDITIONS SHOWN IN THESE DRAWINGS. DIMENSIONS SHALL NOT BE SCALED.
- CONTRACTOR SHALL VERIFY AND BE RESPONSIBLE FOR ALL DIMENSIONS AND CONDITIONS SHOWN IN THESE DRAWINGS. DIMENSIONS SHALL NOT BE SCALED.

DATE
 31/03/25

ISSUED FOR
 SITE PLAN APPROVAL

DATE
 20/04/26

REVISION FOR
 SPA

PROJECT
 WALKERVILLE 7 UNIT RESIDENTIAL

CLIENT
 1258-1262-1264 ARGYLE ROAD WINDSOR, ONTARIO

DRAWING TITLE
 SITE SERVICING PLAN

DATE
 JAN 2025

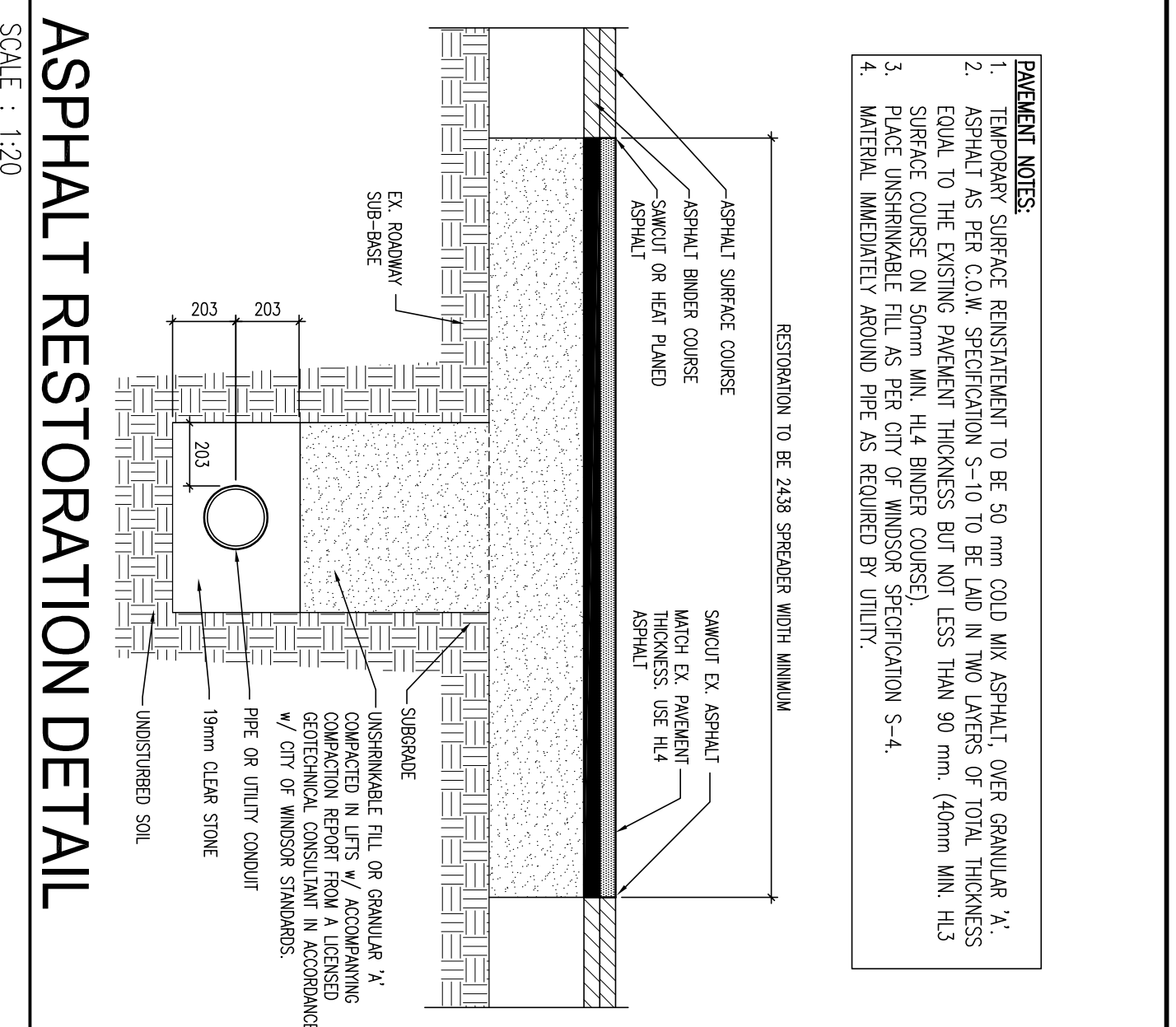
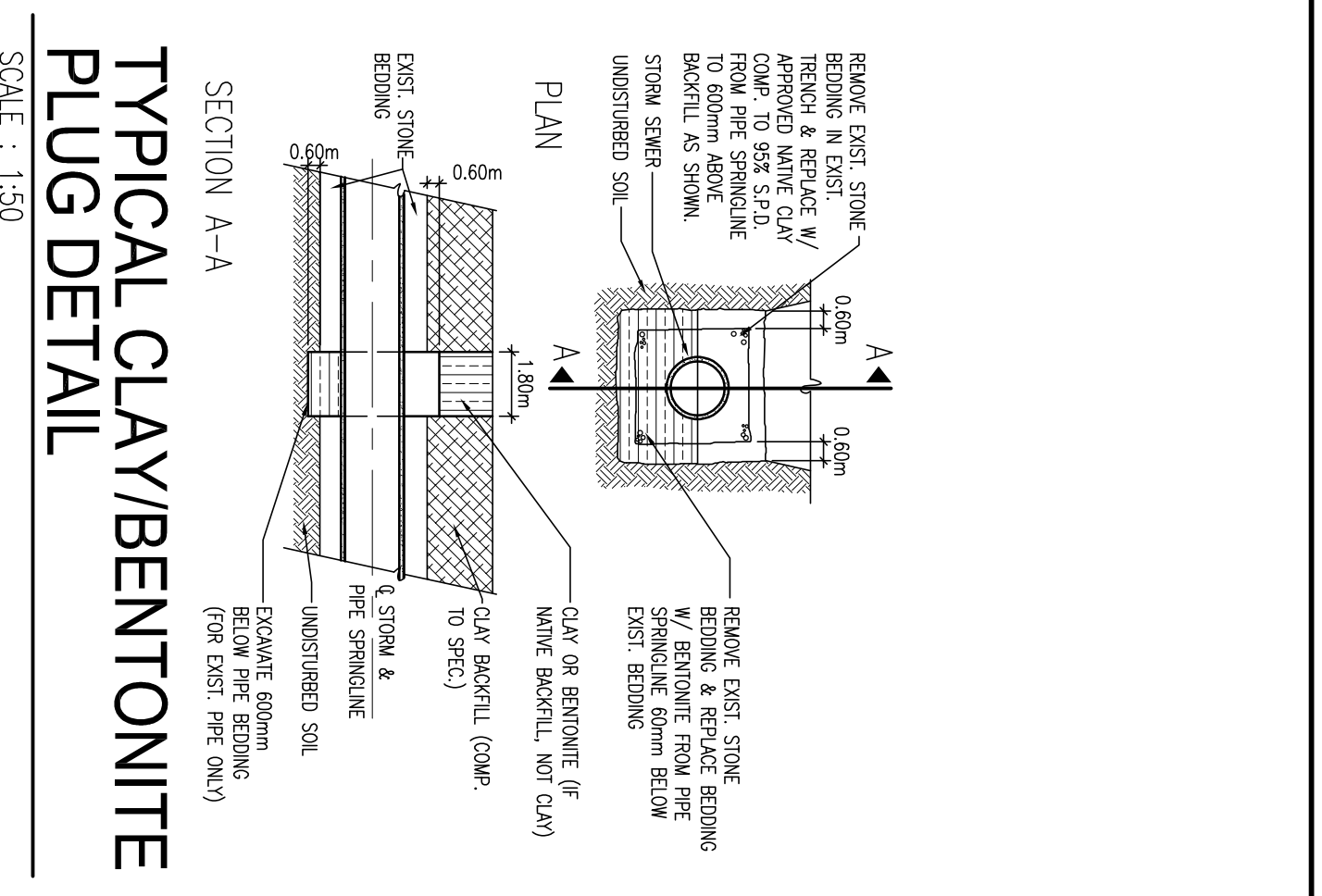
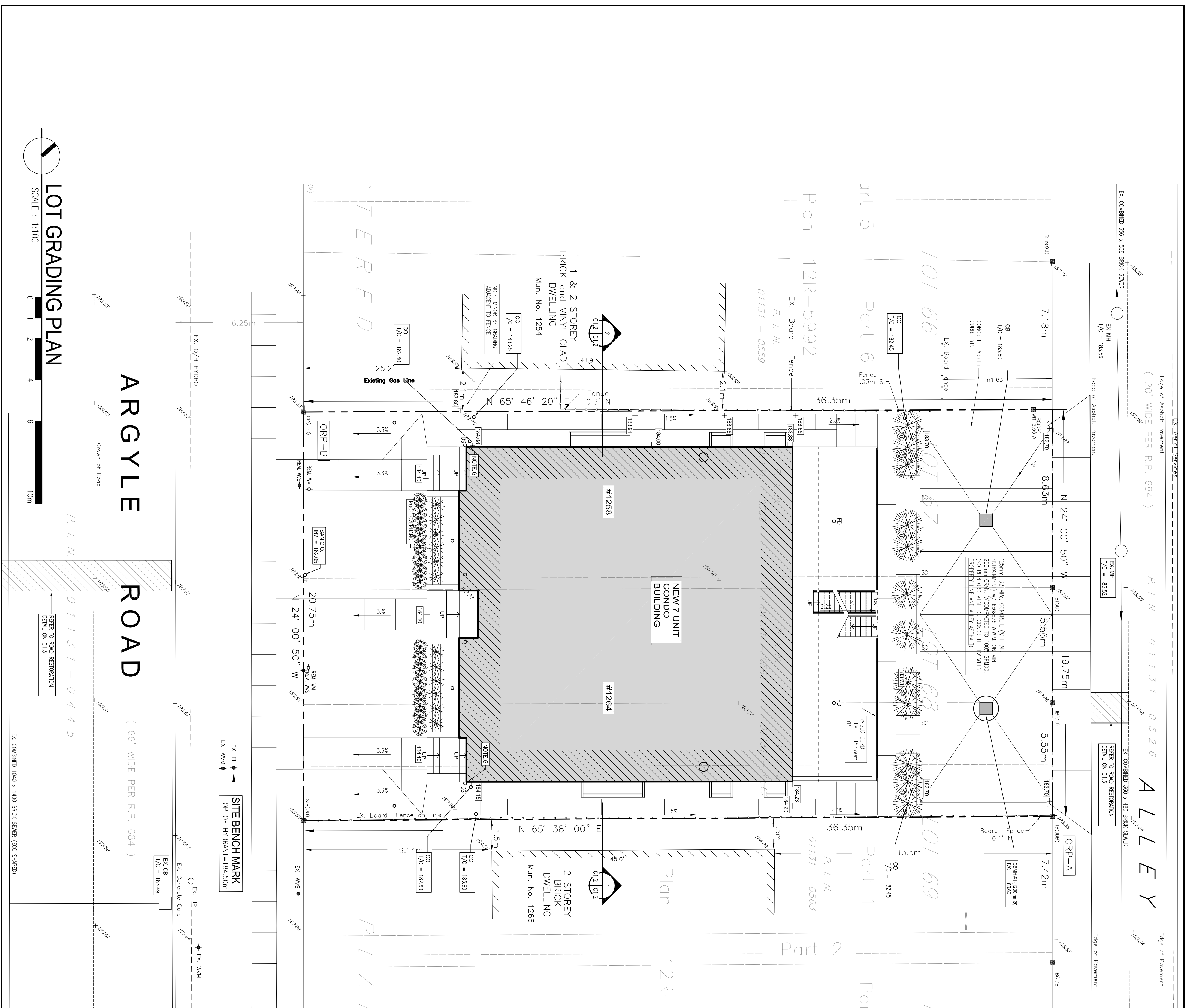
SCALE
 AS NOTED

DRAWN BY
 JLD

CHECKED BY
 MEM

PROJECT FILE NO.
 M25-112

DRAWING NO.
 C1.1



- PAVEMENT NOTES:**
- TEMPORARY SURFACE REINSTATEMENT TO BE 50 mm COID MIX ASPHALT, OVER GRANULAR 'X'.
 - ASPHALT AS PER C.O.W. SPECIFICATION 5-10 TO BE Laid IN TWO LAYERS OF TOTAL THICKNESS SURFACE COURSE ON 50mm MIN. H1.4 BINDER COURSE.
 - PLACE UNSHINKABLE FILL AS PER CITY OF WINDSOR SPECIFICATION 5-4.
 - MATERIAL IMMEDIATELY AROUND PIPE AS REQUIRED BY UTILITY.

