

# ALLEY ACCESS

## ARCHITECTURAL LEGEND

ACC	AIR CONDITIONING CONDENSING UNIT	N.I.C.	NOT IN CONTRACT
ACP	ALUMINUM COMPOSITE PANELS	ND	SANITARY NAPKIN DISPOSAL
ACT	ACOUSTIC CEILING TILE	NV	SANITARY NAPKIN VENDOR
ADO	AUTOMATIC DOOR OPERATOR	OH	OVERHEAD
AL	ALUMINUM	OPP	OPPOSITE
AN	ANODIZED	PLAM	PLASTIC LAMINATE
AFF	ABOVE FINISH FLOOR	PT	PAINT
ARS	ASSISTANCE REQUIRED SIGNAL	PTD	PAPER TOWEL DISPENSER/DISPOSAL
AVS	AUDIBLE VISUAL SIGNAL	PTL	PUSH TO LOCK
AWP	ACOUSTIC WALL PANEL	RA	ROOF ANCHOR
BL	BREAK LINE	RB	RESULTANT BASE
BLK	CONCRETE BLOCK	RD	ROOF DRAIN
CG	CORNER GUARD	RFID	RADIO FREQUENCY IDENTIFICATION
CH	COAT HOOK	RWL	RAIN WATER LEADER
CJ	CONTROL JOINT	SCW	SOLID CORE WOOD
CL	CLEAR GLASS	SD	SOAP DISPENSER
CONC	CONCRETE	SHWR	SHOWER
CPT	CORRET TILE	SIM	SIMILAR
CR	CARD READER	SLR	CONCRETE SEALER
CT	PORCELAIN TILE	SR	SERVER RACK
CUH	CABINET UNIT HEATER	S.S	STAINLESS STEEL
CV	CONNECTOR	SSS	STAINLESS STEEL SHELF
CW	CURTAIN WALL	SVT	SOLID VINYL TILE
DS	DOWNSPOUT	TB	TACK BOARD
EBP	EMERGENCY PUSH BUTTON	TG	TINTED GLASS
EP	ELECTRICAL PANEL	TM	TILTED MIRROR
ES	EMERGENCY SIGN	TM	TOP OF
EX	EXISTING	TP	TOILET PAPER HOLDER
FB	FLOOR BOX - ELECTRICAL	TPG	TEMPERED GLASS
FD	FLOOR DRAIN	TWSI	TACTILE WALKING SURFACE INDICATOR
FE	FIRE EXTINGUISHER	U.N.O.	UNLESS NOTED OTHERWISE
FHC	FIRE HOSE CABINET	US	UNDERSIDE
FM	FLAT MIRROR	V.I.F.	VERIFY IN FIELD
GB	GRAB BAR	VFL	VINYL FLOOR
GL	GLASS	VCT	VINYL COMPOSITE TILE
GYP BD	GYP BOARD	WB	WHITE BOARD
HM	HOLLOW METAL	WD	WOOD
IG	INSULATED GLASS	WI	WIRED GLASS
IM	INSULATED METAL	WP	WATERPROOFING
INS	INSULATION		

<b>ROOM NAME</b>	ROOM NUMBER
(101a)	DOOR NUMBER
(G1)	WINDOW TYPE
(W1a)	WALL TYPE/CEILING TYPE
(F1)	FLOOR TYPE
(R1)	ROOF TYPE
(M)	MATERIAL TYPE
(1)	REVISION NUMBER

## SB-12 PERFORMANCE TABLE 3.1 SB-12, A1 PACKAGE

CEILING W/ ATTIC SPACE:	R-60
CEILING W/O ATTIC SPACE:	R-31
EXPOSED FLOOR:	R-31
WALLS ABOVE GRADE:	R-22
BASEMENT WALLS:	R-12 + R-12
EDGE OF BELOW GRADE SLAB ≤ 600MM BELOW GRADE:	R-10
HEATED SLAB OR SLAB ≤ 600MM BELOW GRADE:	R-10
WINDOWS MAX U VALUE:	28
SKYLIGHTS MAX U VALUE:	49
SPACE HEATING EQUIPMENT MIN AFUE:	96%
HRV MIN EFFICIENCY:	75%
DOMESTIC HOT WATER HEATER MIN EFFICIENCY:	0.8

## SITE INFORMATION

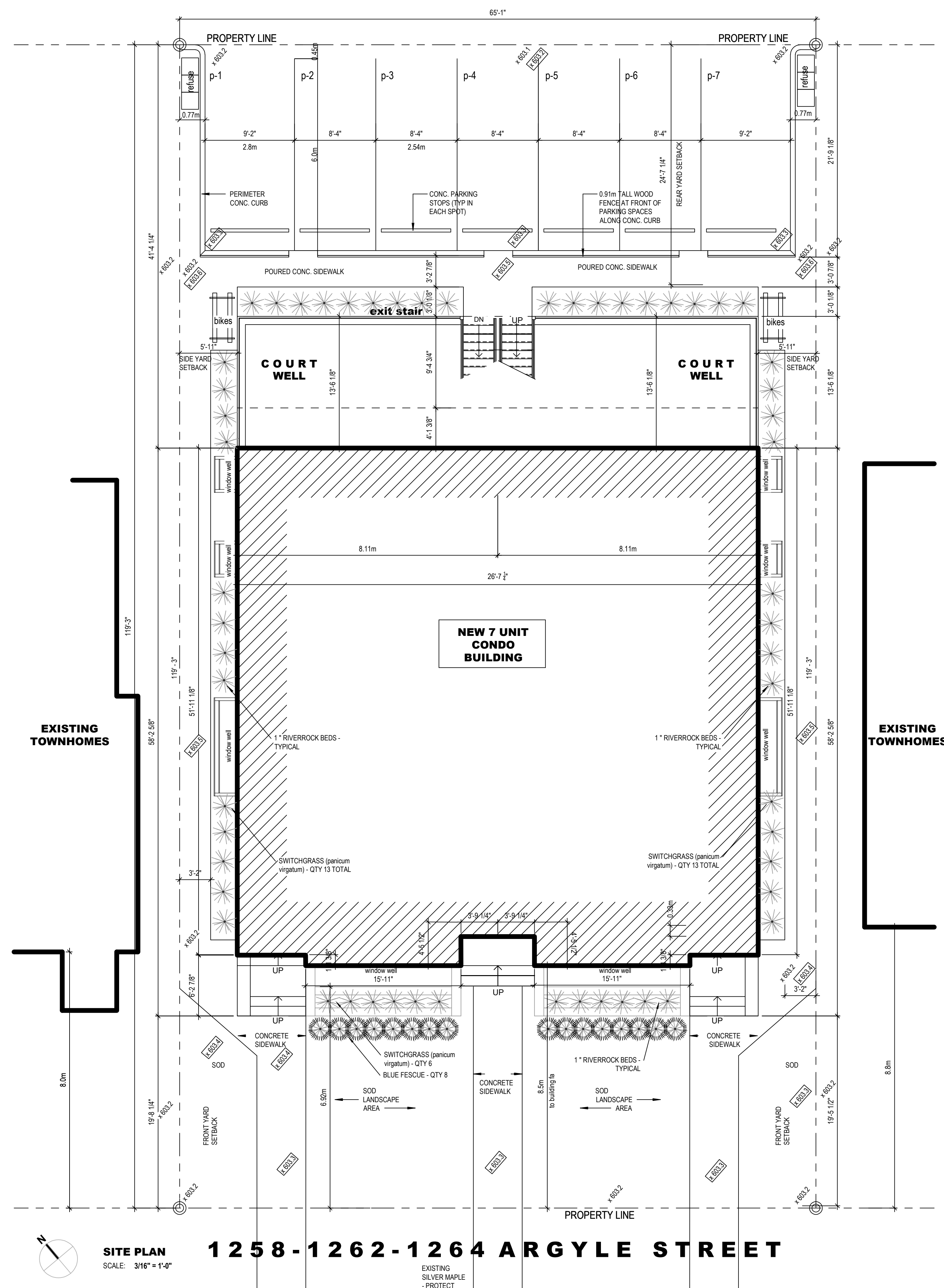
ADDRESS:	1258-1262-1264, ARGYLE STREET WINDSOR ON N8Y 3K4
ZONING:	RD2.2
SITE AREA:	7760 SF
MAX. COVERAGE ALLOWANCE:	45% (3,492 SF)
PROPOSED COVERAGE:	35% (2,700 SF)

## AREAS

<b>7 UNIT MULTI-RESIDENTIAL BUILDING</b>	
GROSS AREA:	
BASEMENT:	2708 SF (BELOW GRADE)
FIRST FLOOR:	2701 SF
SECOND FLOOR:	2538 SF
THIRD FLOOR:	1313 SF

## WALLTYPE LEGEND

W1		<ul style="list-style-type: none"> <li>BOARD AND BATTEN</li> <li>WEATHER BARRIER</li> <li>1/2" PLYWOOD</li> <li>1" RIGID INSULATION CONTINUOUS R-6</li> <li>2" x 6" WOOD STUDS @ 16" O.C. C/W R-24 BATT INSUL</li> <li>6 MIL POLY V B BARRIER</li> <li>1/2" GYPSUM BOARD - PTD</li> </ul>
W2		<ul style="list-style-type: none"> <li>3 5/8" BRICK</li> <li>7/8" AIR SPACE</li> <li>WEATHER BARRIER</li> <li>1/2" PLYWOOD</li> <li>1" RIGID INSULATION CONTINUOUS R-6</li> <li>2" x 6" WOOD STUDS @ 16" O.C. C/W R-24 BATT INSUL</li> <li>6 MIL POLY V B BARRIER</li> <li>1/2" GYPSUM BOARD - PTD</li> </ul>
F1		<ul style="list-style-type: none"> <li>1/2" GYPSUM BOARD - PTD</li> <li>2" x 4" WOOD STUDS @ 16" O.C</li> <li>1/2" GYPSUM BOARD - PTD</li> </ul>
F2		<ul style="list-style-type: none"> <li>1/2" GYPSUM BOARD - PTD</li> <li>2" x 6" WOOD STUDS @ 16" O.C</li> <li>1/2" GYPSUM BOARD - PTD</li> </ul>
F2a		<ul style="list-style-type: none"> <li>5/8" TYPE 'X' GYPSUM BOARD - PTD</li> <li>2" x 6" WOOD STUDS @ 16" O.C</li> <li>5/8" TYPE 'X' GYPSUM BOARD - PTD</li> </ul>
F3		<ul style="list-style-type: none"> <li>SB-3 TABLE 2, ASSEMBLY F13A, 1HR RATING</li> <li>INTERIOR WALL - DBL 2X4 DEMISING WALL RATED 1 HR F.R.R. - STC 57</li> <li>5/8" TYPE 'X' GYPSUM BOARD</li> <li>2" x 4" WOOD STUDS @ 16" O.C. (LOAD BEARING)</li> <li>C/W MINERAL FIBER BATT INSULATION</li> <li>1/2" AIR SPACE</li> <li>2" x 4" WOOD STUDS @ 16" O.C. (LOAD BEARING)</li> <li>C/W MINERAL FIBER BATT INSULATION</li> <li>5/8" TYPE 'X' GYPSUM BOARD - PTD</li> </ul>
F4		<ul style="list-style-type: none"> <li>2" RIGID INSULATION</li> <li>2" x 4" WOOD STUDS @ 16" O.C. C/W BATT INSUL</li> <li>6 MIL POLY V B BARRIER</li> </ul>



36x24TBlock.jpg

160 Eugene Street West  
Windsor, ON N8Y 2Z6  
519.258.1300

This drawing is not to be used for construction unless it is countersigned by the Project Architect

Issued For (NAME)

Date

Revision Schedule  
Description

No.

ARCHITECTURAL SITE PLAN

Walkerville 8 Unit Residential  
1258-1262-1264, Argyle St, Windsor ON N8Y 3K4

Drawn By PA  
Checked By DS  
Project No 2422  
Sheet No

A101

C:\Users\designer12\Documents\2422 ARCH - No Garage - jms6dyv.rvt

3/27/2024 10:47:37 AM THE INFORMATION INCLUDED IN THIS ELECTRONIC DRAWING FILE IS PROTECTED BY COPYRIGHT. UNAUTHORIZED USE OF THIS FILE WITHOUT THE WRITTEN PERMISSION OF ARCHITECTURA INC. ARCHITECTS IS PROHIBITED. ARCHITECTURA INC. ARCHITECTS IS RESPONSIBLE ONLY FOR INFORMATION SHOWN ON A MECHANICAL REPRODUCTION OF THIS DRAWING FILE THAT HAS BEEN SIGNED AND SEALED BY A REGISTERED ARCHITECT EMPLOYED BY THE FIRM.

THIS DRAWING SHEET IS 36"x24" IN SIZE. IT IS RECOMMENDED THAT ANY REPRODUCTION, ELECTRONIC OR OTHERWISE, BE TO THE SAME SHEET SIZE TO ENSURE THE ACCURACY OF DRAWING SCALES DEPICTED ON THIS SHEET. THIS DRAWING IS NOT TO BE SCALED - USE FIGURED DIMENSIONS ONLY.