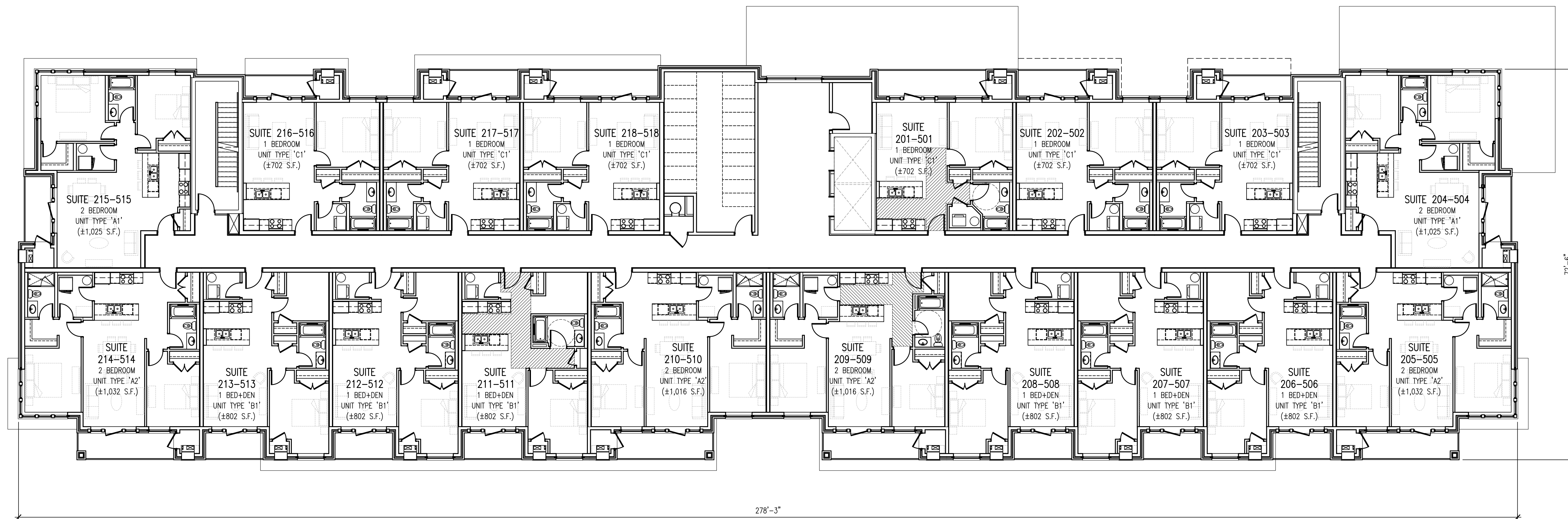


FIRST FLOOR PLAN
 SCALE : 3/32" = 1'-0"
 18,525 S.F.
 0 2 4 8 16 32 FEET



FLOOR PLAN, 2ND - 5TH
 SCALE : 3/32" = 1'-0"
 18,300 S.F.
 0 2 4 8 16 32 FEET

2026/01/19	SPC, STAGE 2
2025/10/21	REVIEW
date (yyyy/mm/dd):	issued for:

- general notes:
- THIS PRINT IS AN INSTRUMENT OF SERVICE ONLY AND IS THE PROPERTY OF THE ARCHITECT.
 - DRAWINGS SHALL NOT BE SCALED.
 - CONTRACTORS SHALL VERIFY AND BE RESPONSIBLE FOR ALL DIMENSIONS AND CONDITIONS ON THE JOB AND THIS OFFICE MUST BE NOTIFIED OF ANY VARIATIONS FROM THE DIMENSIONS AND CONDITIONS SHOWN BY THESE DRAWINGS.
 - ATTENTION IS DIRECTED TO PROVISIONS IN THE GENERAL CONDITIONS REGARDING CONTRACTOR'S RESPONSIBILITIES IN REGARD TO SUBMISSION OF SHOP DRAWINGS.
 - IN THE EVENT THE ARCHITECT IS RETAINED TO REVIEW SHOP DRAWINGS, SUCH REVIEW IS ONLY TO CHECK FOR CONFORMANCE WITH DESIGN CONCEPT AND WITH THE INFORMATION GIVEN IN THE CONTRACT DOCUMENTS.
 - CONTRACTORS SHALL PROMPTLY NOTIFY THE ARCHITECT IN WRITING OF THE EXISTENCE OF ANY OBSERVED VARIATIONS BETWEEN THE CONTRACT DOCUMENTS AND ANY APPLICABLE CODES OR BY-LAWS.
 - THE ARCHITECT IS NOT RESPONSIBLE FOR THE CONTRACTOR'S MEANS, METHODS AND OR TECHNIQUES IN THE CONSTRUCTION OF THIS FACILITY.

stamp:

A architectural
D design
A associates inc. architect

1670 mercer street
 windsor ontario canada n8x 3p7
 ph 519.254.3430 fax 519.254.3642
 email - info@ada-architect.ca www.ada-architect.ca

project:
PROPOSED 6 STOREY APARTMENT BUILDING WYANDOTTE ST. E AND WATSON AVE., WINDSOR ON

client:
BAKER INVESTMENTS

title:
FLOOR PLANS

scale:
AS SHOWN

drawn by:
JT

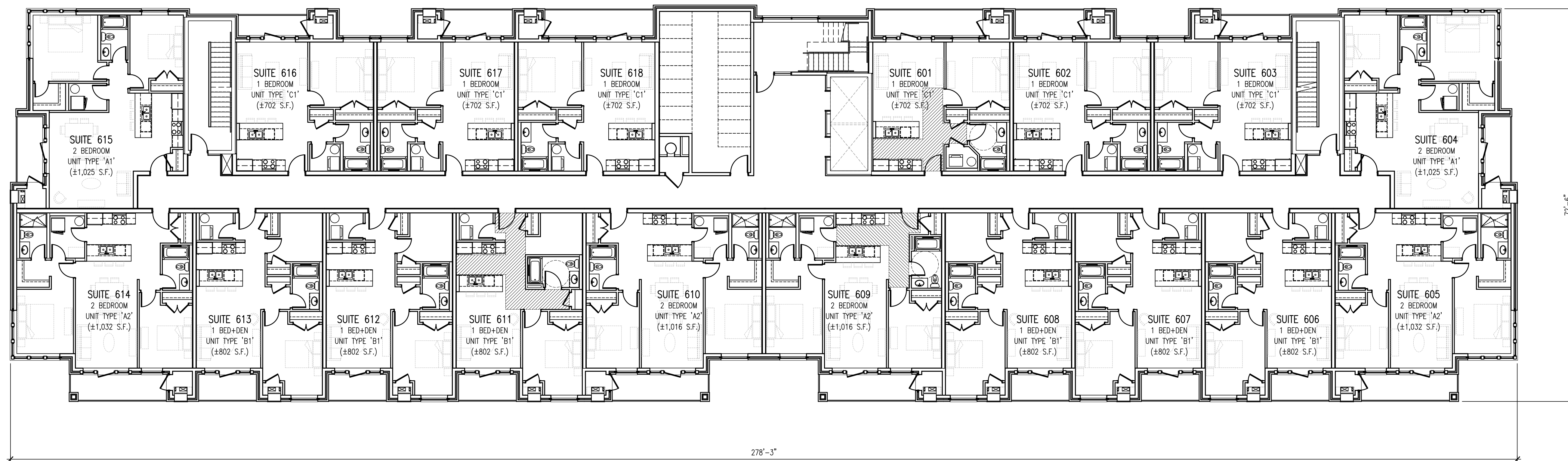
checked by:
SMB

date:
MAY, 2024

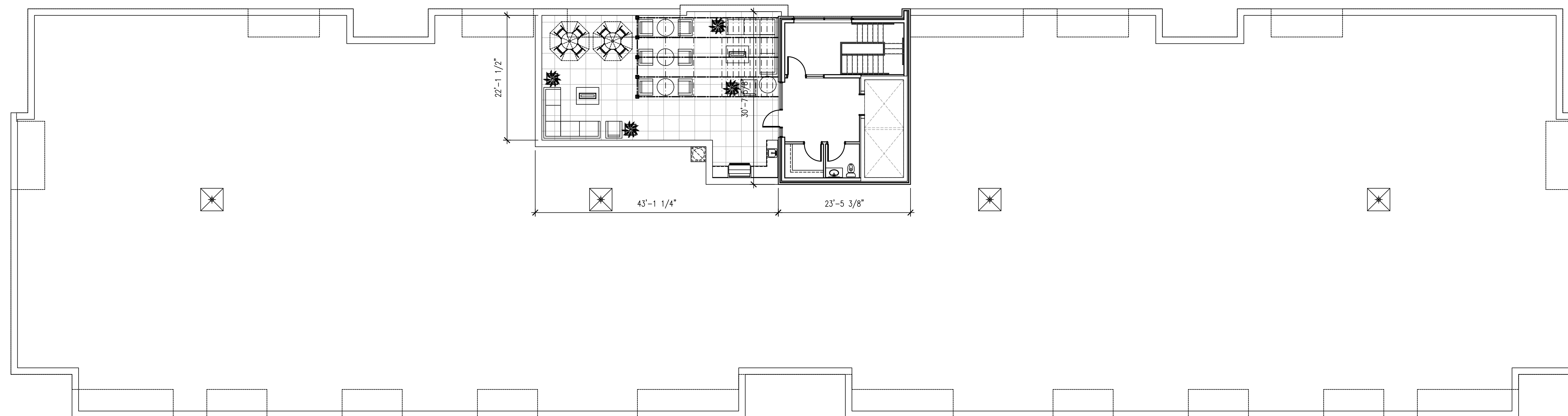
comm. no.:
2024-083

sheet no.:

A1.1



FLOOR PLAN, 6TH
 SCALE : 3/32" = 1'-0"
 18,300 S.F.



ROOFTOP ACCESS PLAN
 SCALE : 3/32" = 1'-0"
 32 FEET

2026/01/19 SPC, STAGE 2

2025/10/21 REVIEW

date (yyyy/mm/dd): issued for:

general notes:

1. THIS PRINT IS AN INSTRUMENT OF SERVICE ONLY AND IS THE PROPERTY OF THE ARCHITECT.
2. DRAWINGS SHALL NOT BE SCALED.
3. CONTRACTORS SHALL VERIFY AND BE RESPONSIBLE FOR ALL DIMENSIONS AND CONDITIONS ON THE JOB AND THIS OFFICE MUST BE NOTIFIED OF ANY VARIATIONS FROM THE DIMENSIONS AND CONDITIONS SHOWN BY THESE DRAWINGS.
4. ATTENTION IS DIRECTED TO PROVISIONS IN THE GENERAL CONDITIONS REGARDING CONTRACTOR'S RESPONSIBILITIES IN REGARD TO SUBMISSION OF SHOP DRAWINGS.
5. IN THE EVENT THE ARCHITECT IS RETAINED TO REVIEW SHOP DRAWINGS, SUCH REVIEW IS ONLY TO CHECK FOR CONFORMANCE WITH DESIGN CONCEPT AND WITH THE INFORMATION GIVEN IN THE CONTRACT DOCUMENTS.
6. CONTRACTORS SHALL PROMPTLY NOTIFY THE ARCHITECT IN WRITING OF THE EXISTENCE OF ANY OBSERVED VARIATIONS BETWEEN THE CONTRACT DOCUMENTS AND ANY APPLICABLE CODES OR BY-LAWS.
7. THE ARCHITECT IS NOT RESPONSIBLE FOR THE CONTRACTOR'S MEANS, METHODS AND OR TECHNIQUES IN THE CONSTRUCTION OF THIS FACILITY.

stamp:

A architectural
D design
A associates inc. architect

1670 mercer street
 windsor ontario canada n8x 3p7
 ph 519.254.3430 fax 519.254.3642
 email - info@ada-architect.ca www.ada-architect.ca

project:
 PROPOSED 6 STOREY
 APARTMENT BUILDING
 WYANDOTTE ST. E AND
 WATSON AVE., WINDSOR ON

client:
 BAKER INVESTMENTS

title:
 6TH FLOOR PLAN &
 ROOFTOP ACCESS PLAN

scale:
 AS SHOWN

drawn by:
 JT

checked by:
 SMB

date:
 MAY, 2024

comm. no.:
 2024-083

sheet no.:

A1.2



NORTH ELEVATION

SCALE : 3/32" = 1'-0"
0 2 4 8 16 32 FEET



EAST ELEVATION

SCALE : 3/32" = 1'-0"
0 2 4 8 16 32 FEET

EXTERIOR FINISH SCHEDULE					
IDEN. NO.	FINISH DESCRIPTION	PRODUCT	SIZE	COLOUR	NOTE
1	STONE	BRICK VENEER	--	--	--
2	STONE SOLDIER COURSE/ DETAIL	BRICK VENEER	--	--	--
3	DECORATIVE CANOPY	--	--	--	--
4	E.I.F.S. 01	DRYMT OR EQUAL	--	--	--
5	E.I.F.S. 02	DRYMT OR EQUAL	--	--	--
6	E.I.F.S. DETAIL	DRYMT OR EQUAL	--	--	--
7	DECORATIVE PANNELLING	--	--	--	--
8	CORNICE DETAIL	--	--	--	--
9	PLANTER PRIVACY FENCE	--	--	--	--
10	H.M. DOORS & FRAMES	--	--	--	--
11	ALUMINUM DOOR/WINDOW GLAZING SYSTEM	--	--	--	--
12	VINYL WINDOWS	--	--	--	--
13	BALCONY SLIDING DOOR	--	--	--	--
14	CONCRETE BALCONY	PRECAST SUPPLIER	--	--	--
15	ALUMINUM BALCONY GAUFRAL SYSTEM	--	--	--	--
16	STONE SILL	--	--	--	--
17	MAGIC-PAK UNIT	--	--	--	--
18	ROOFTOP PERGOLA	--	--	--	--
19	SIGNAGE	--	--	--	--

2026/01/19 SPC, STAGE 2

2025/10/21 REVIEW

date (yyy/mm/dd); issued for:

general notes:

- THIS PRINT IS AN INSTRUMENT OF SERVICE ONLY AND IS THE PROPERTY OF THE ARCHITECT.
- DRAWINGS SHALL NOT BE SCALED.
- CONTRACTORS SHALL VERIFY AND BE RESPONSIBLE FOR ALL DIMENSIONS AND CONDITIONS ON THE JOB AND THIS OFFICE MUST BE NOTIFIED OF ANY VARIATIONS FROM THE DIMENSIONS AND CONDITIONS SHOWN BY THESE DRAWINGS.
- ATTENTION IS DIRECTED TO PROVISIONS IN THE GENERAL CONDITIONS REGARDING CONTRACTOR'S RESPONSIBILITIES IN REGARD TO SUBMISSION OF SHOP DRAWINGS.
- IN THE EVENT THE ARCHITECT IS RETAINED TO REVIEW SHOP DRAWINGS, SUCH REVIEW IS ONLY TO CHECK FOR CONFORMANCE WITH DESIGN CONCEPT AND WITH THE INFORMATION GIVEN IN THE CONTRACT DOCUMENTS.
- CONTRACTORS SHALL PROMPTLY NOTIFY THE ARCHITECT IN WRITING OF THE EXISTENCE OF ANY OBSERVED VARIATIONS BETWEEN THE CONTRACT DOCUMENTS AND ANY APPLICABLE CODES OR BY-LAWS.
- THE ARCHITECT IS NOT RESPONSIBLE FOR THE CONTRACTOR'S METHODS, METHODS AND OR TECHNIQUES IN THE CONSTRUCTION OF THIS FACILITY.

stamp:

A architectural
D design
A associates inc. architect

1670 mercer street
windsor ontario canada n8x 3p7
ph 519.254.3430 fax 519.254.3642
email - info@ada-architect.ca www.ada-architect.ca

project:

PROPOSED 6 STOREY
APARTMENT BUILDING
WYANDOTTE ST. E AND
WATSON AVE., WINDSOR ON

client:

BAKER INVESTMENTS

title:

EXTERIOR ELEVATIONS

scale:

AS SHOWN

drawn by:

JT

checked by:

SMB

date:

MAY, 2024

comm. no.:

2024-083

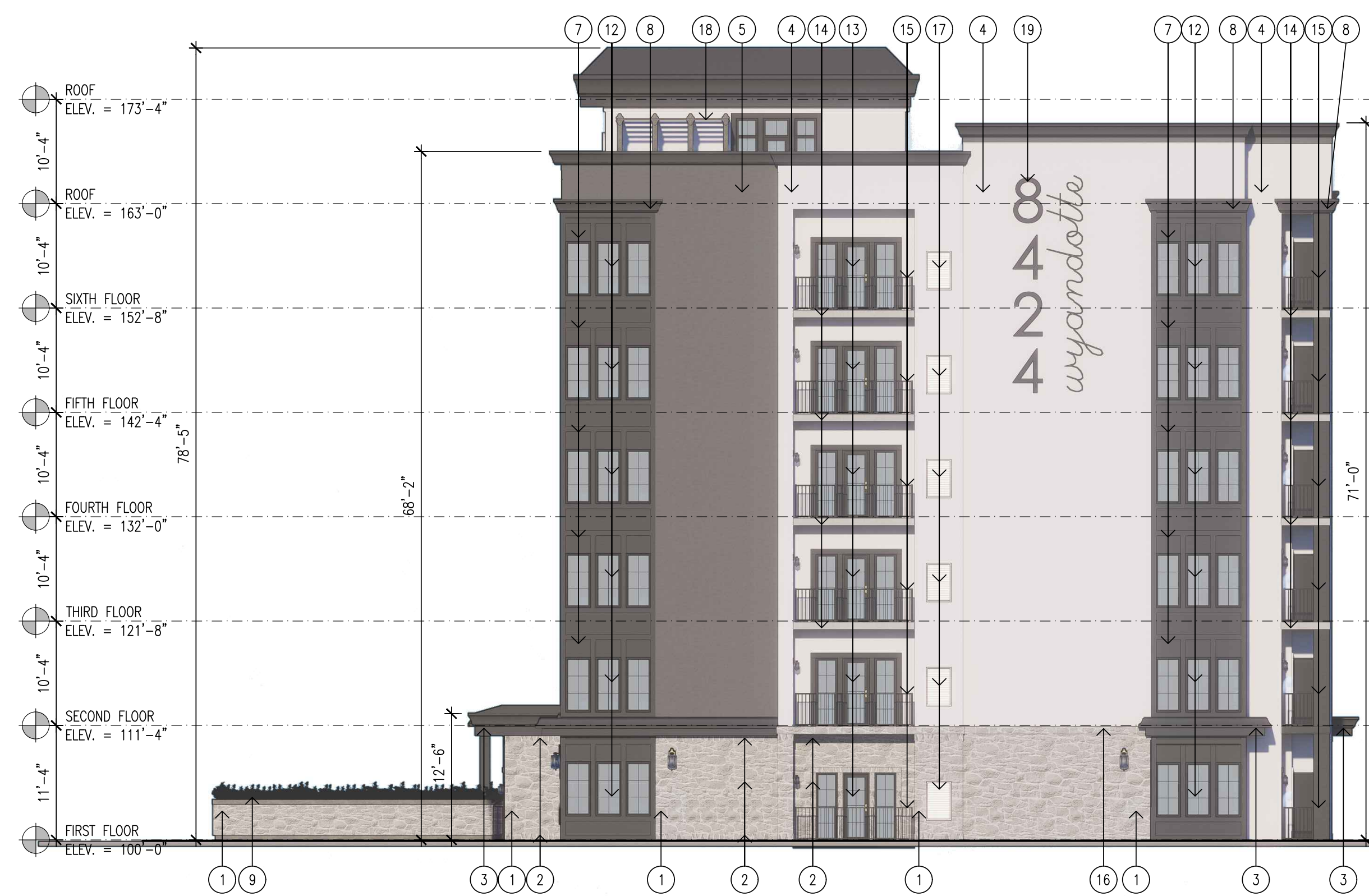
sheet no.:

A3.1



SOUTH ELEVATION

SCALE : 3/32" = 1'-0"
0 2 4 8 16 32 FEET



WEST ELEVATION

SCALE : 3/32" = 1'-0"
0 2 4 8 16 32 FEET

EXTERIOR FINISH SCHEDULE					
IDEN. NO.	FINISH DESCRIPTION	PRODUCT	SIZE	COLOUR	NOTE
1	STONE	BRICK VENEER	--	--	--
2	STONE SOLDIER COURSE/ DETAIL	BRICK VENEER	--	--	--
3	DECORATIVE CANOPY	--	--	--	--
4	E.I.F.S. 01	DRYWIT OR EQUAL	--	--	--
5	E.I.F.S. 02	DRYWIT OR EQUAL	--	--	--
6	E.I.F.S. DETAIL	DRYWIT OR EQUAL	--	--	--
7	DECORATIVE PANNELLING	--	--	--	--
8	CORNICE DETAIL	--	--	--	--
9	PLANTER PRIVACY FENCE	--	--	--	--
10	H.M. DOORS & FRAMES	--	--	--	--
11	ALUMINUM DOOR/WINDOW GLAZING SYSTEM	--	--	--	--
12	VINYL WINDOWS	--	--	--	--
13	BALCONY SLIDING DOOR	--	--	--	--
14	CONCRETE BALCONY	PRECAST SUPPLIER	--	--	--
15	ALUMINUM BALCONY GUARDRAIL SYSTEM	--	--	--	--
16	STONE SILL	--	--	--	--
17	MAGIC-PAK UNIT	--	--	--	--
18	ROOFTOP PERGOLA	--	--	--	--
19	SIGNAGE	--	--	--	--

2026/01/19 SPC, STAGE 2

2025/10/21 REVIEW

date (yyy/mm/dd): issued for:

general notes:

- THIS PRINT IS AN INSTRUMENT OF SERVICE ONLY AND IS THE PROPERTY OF THE ARCHITECT.
- DRAWINGS SHALL NOT BE SCALED.
- CONTRACTORS SHALL VERIFY AND BE RESPONSIBLE FOR ALL DIMENSIONS AND CONDITIONS ON THE JOB AND THIS OFFICE MUST BE NOTIFIED OF ANY VARIATIONS FROM THE DIMENSIONS AND CONDITIONS SHOWN BY THESE DRAWINGS.
- ATTENTION IS DIRECTED TO PROVISIONS IN THE GENERAL CONDITIONS REGARDING CONTRACTOR'S RESPONSIBILITIES IN REGARD TO SUBMISSION OF SHOP DRAWINGS.
- IN THE EVENT THE ARCHITECT IS RETAINED TO REVIEW SHOP DRAWINGS, SUCH REVIEW IS ONLY TO CHECK FOR CONFORMANCE WITH DESIGN CONCEPT AND WITH THE INFORMATION GIVEN IN THE CONTRACT DOCUMENTS.
- CONTRACTORS SHALL PROMPTLY NOTIFY THE ARCHITECT IN WRITING OF THE EXISTENCE OF ANY OBSERVED VARIATIONS BETWEEN THE CONTRACT DOCUMENTS AND ANY APPLICABLE CODES OR BY-LAWS.
- THE ARCHITECT IS NOT RESPONSIBLE FOR THE CONTRACTOR'S METHODS, MEANS, OR TECHNIQUES IN THE CONSTRUCTION OF THIS FACILITY.

stamp:

A architectural
D design
A associates inc. architect

1670 mercer street
windsor ontario canada n8x 3p7
ph 519.254.3430 fax 519.254.3642
email - info@ada-architect.ca www.ada-architect.ca

project:

**PROPOSED 6 STOREY
APARTMENT BUILDING
WYANDOTTE ST. E AND
WATSON AVE., WINDSOR ON**

client:

BAKER INVESTMENTS

title:

EXTERIOR ELEVATIONS

scale:

AS SHOWN

drawn by:

JT

checked by:

SMB

date:

MAY, 2024

comm. no.:

2024-083

sheet no.:

A3.2