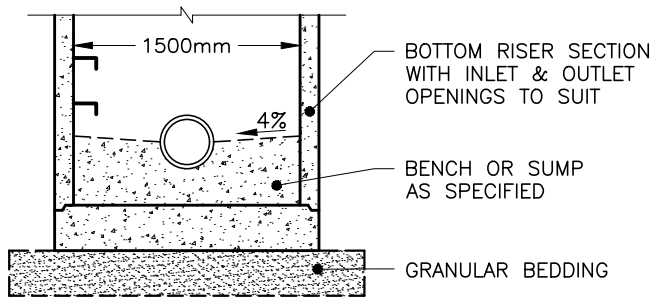
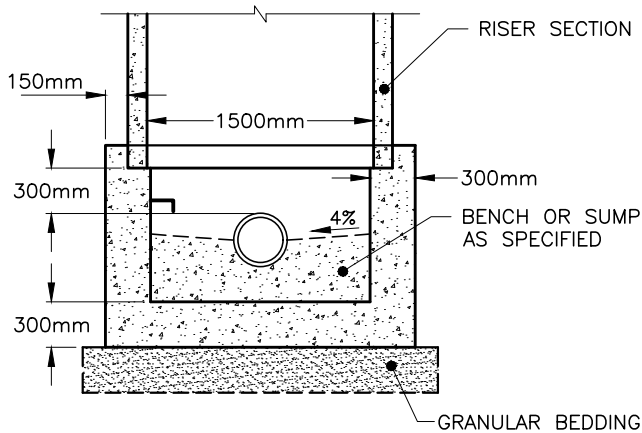


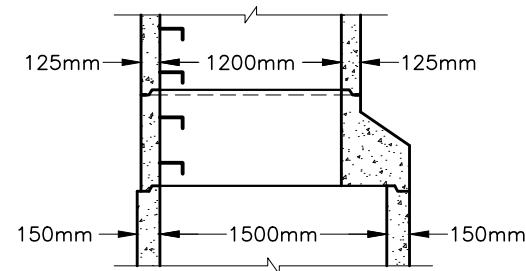
ALTERNATIVES



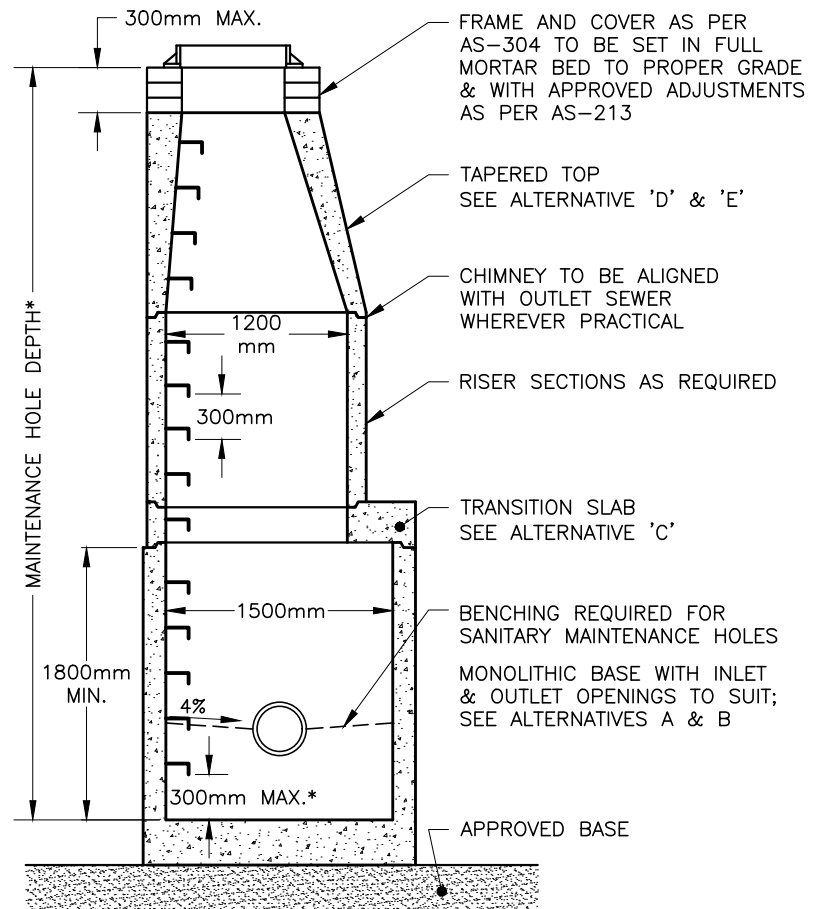
A. PRECAST SLAB BASE



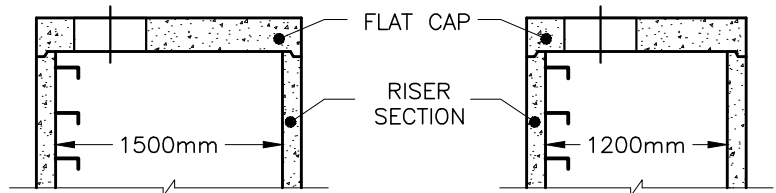
B. CAST-IN-PLACE BASE



C. TAPERED TRANSITION SLAB



*MEASURED TO BENCHING OR SUMP, WHICHEVER IS APPLICABLE



D. 1500mm PRECAST FLAT CAP


E. 1200mm PRECAST FLAT CAP

NOTES:

1. THE SUMP IS MEASURED FROM THE LOWEST INVERT, FOR SUMP DETAIL SEE AS-314A.
2. GRANULAR 'A' BACKFILL SHALL BE PLACED AND COMPACTED IN LIFTS NOT EXCEEDING 300mm TO A MINIMUM WIDTH OF 300mm AROUND THE ENTIRE PERIMETER OF THE MAINTENANCE HOLE.
3. PRECAST CONCRETE COMPONENTS SHALL BE ACCORDING TO OPSD 701 & 703 SERIES.
4. PIPE SUPPORT SHALL BE CLASS 'A' BEDDING TO FIRST PIPE JOINT BEYOND MANHOLE (RIGID PIPE) OR A FLEXIBLE JOINT WITHIN 900mm OF MANHOLE WALL (RIGID OR FLEXIBLE PIPE) WITH SEWER STONE BEDDING.
5. MAINTENANCE HOLE STEPS IN ACCORDANCE WITH AS-305.
6. FROST STRAPPING FOR SANITARY MAINTENANCE HOLES AS PER AS-314 TO EXTEND 2.0m BELOW FINISHED GRADE (1.0m BELOW FROST DEPTH).

7. WATERPROOFING MEMBRANE FOR SANITARY MAINTENANCE HOLES AS PER AS-314, SHALL BE INSTALLED PRIOR TO INSTALLATION OF FROST STRAPPING.

NOT TO SCALE

 CITY OF WINDSOR ENGINEERING DEPARTMENT	
PRECAST MAINTENANCE HOLE 1500mm DIAMETER	
DR'N BY: NB, AZ	DATE: MAR, 2017
REV. DATE: DEC, 2024	CH'KD BY (ENG): PM, JH
CH'KD BY (GEO/OPS): PJU, AL	PASSED BY: FM
<i>David Simpson</i> CITY ENGINEER	
AS-314B	