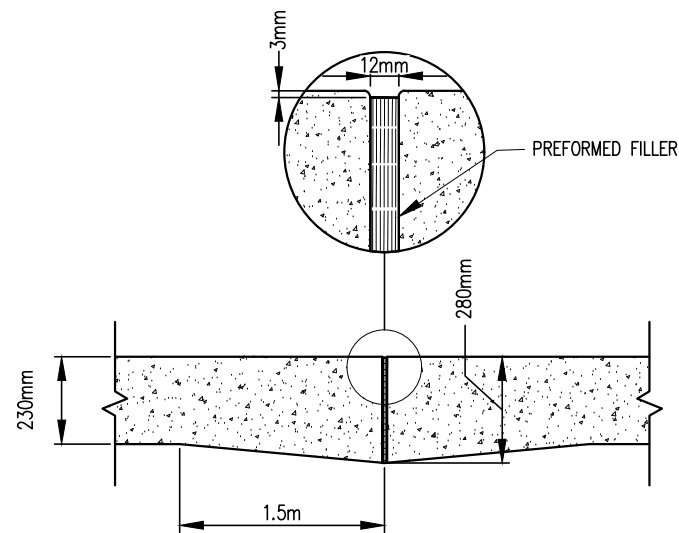
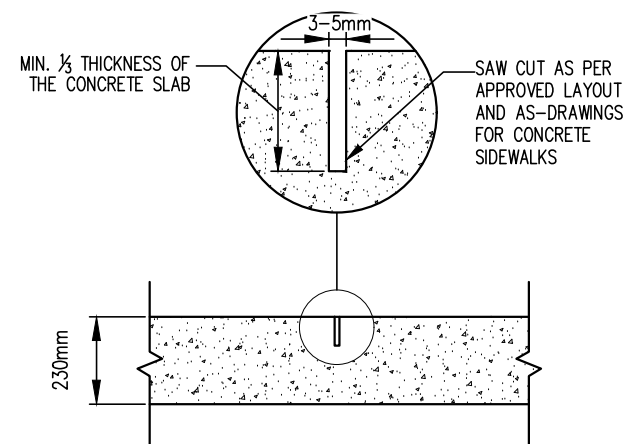


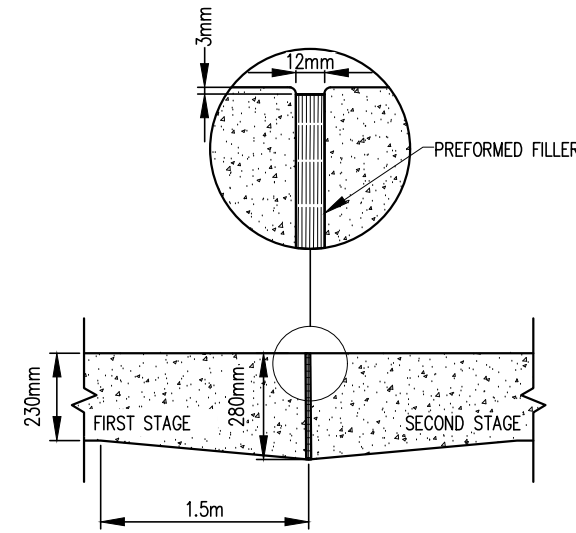
TYPICAL CROSS SECTION



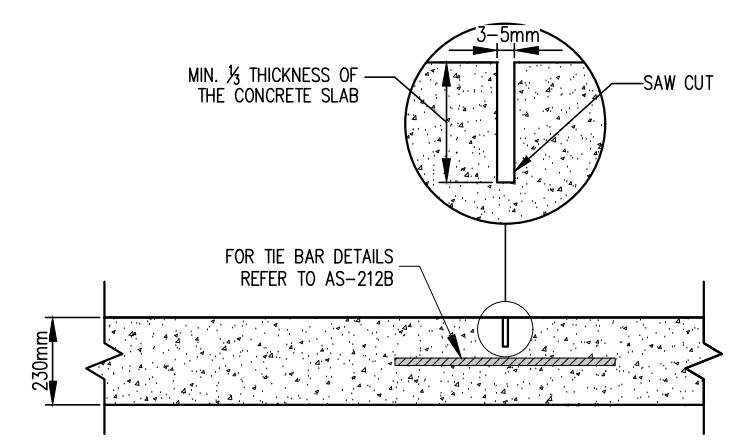
TYPE A  
EXPANSION JOINT



TYPE B  
TRANSVERSE CONTRACTION JOINT



TYPE C  
TRANSVERSE CONSTRUCTION JOINT



TYPE D  
LONGITUDINAL JOINT WITH TIE BAR

NOTES:

1. SPACING OF TYPE B TRANSVERSE CONTRACTION JOINTS SHALL NOT EXCEED 4.88m, MIN. 3.66m.
2. WHEN JOINTS OCCUR WITHIN 1.5m OF, OR CONTACTS A CATCH BASIN, MANHOLE, OR UTILITY VALVE STRUCTURE, SHORTEN ONE OR MORE PANELS EITHER SIDE OF OPENING TO PERMIT JOINT TO FALL ON CENTER OF STRUCTURE.
3. ANGLES BETWEEN PANEL JOINTS MUST NOT BE LESS THAN 45°.
4. CATCH BASINS, UTILITY MANHOLES, UTILITY VALVES, ETC. SHALL BE ISOLATED AS PER AS-213.
5. SELF LEVELING MAINTENANCE HOLE FRAME & COVER SHALL BE USED IN CONCRETE PAVEMENT, WHERE POSSIBLE. REFER TO AS-553.
6. JOINT SPACING FOR SEPARATE CURB AND GUTTER ON RADIUS SHALL NOT EXCEED 3.05m.
7. JOINTS FOR CURB AND GUTTER SHALL CONSIST OF 13mm THICK PREFORMED FILLER, MACHINE CUT TO THE REQUIRED CROSS SECTION.
8. REFER TO AS-208, AS-208A, AS-216 FOR CURB AND GUTTER DETAILS, INCLUDING FOR CURBS PLACED INTEGRAL WITH CONCRETE PAVEMENT.
9. ALL WORK SHALL CONFORM TO CITY OF WINDSOR SPECIFICATION S-9.

NOT TO SCALE

CITY OF WINDSOR ENGINEERING DEPARTMENT	
LOCAL INDUSTRIAL CONCRETE PAVEMENT	
DR'N BY: AC, AZ	DATE: FEB, 1973
REV. DATE: JUN, 2024	CH'KD BY (ENG): PM, JH
CH'KD BY (GEO/OPS): PJU, AL	PASSED BY: FM
_____ CITY ENGINEER	AS-225