



Matchette Road Traffic Calming

Broadway Street to Sprucewood Avenue

February 1st, 2022 – Public Information Centre (PIC)

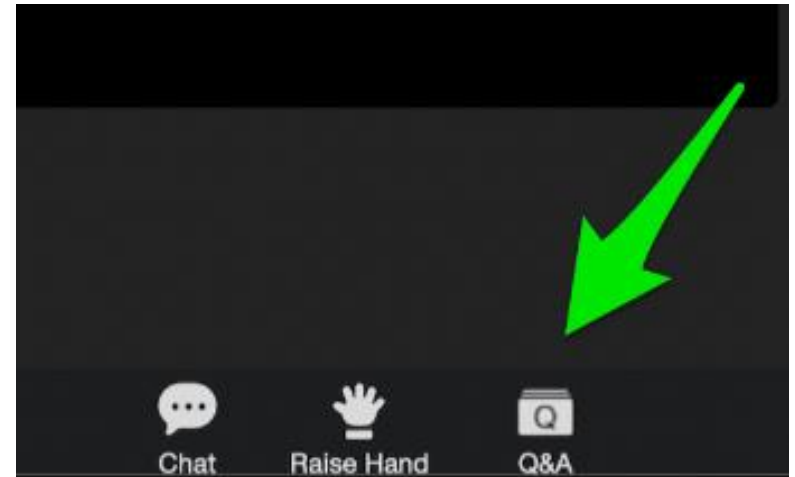
6:30 PM – 8:30 PM

Agenda

- Traffic Calming:
 - What it is and what is not?
- Background on Matchette Road
 - Original Concerns
 - Speed Profile and Volume Analysis
- Proposed Traffic Calming Concept
- Next Steps

Housekeeping Items

- Presentation slides
 - <https://tinyurl.com/tcalming>
- Questions
 - **Q & A function**
 - Upvote!
 - Text: 519-560-7971
 - Raise hand
 - (*9 if on phone)
- Comments and more info
 - 311
 - transportation@citywindsor.ca
 - 519-255-6267 x6831



What is Traffic Calming?

Traffic Calming is the implementation of mainly physical measures to:

- Reduce negative effects of motor vehicle use
- Alter driver behaviour
- Improve conditions for non-motorized street users

The objective of Traffic Calming are to:

- Reduce vehicle speeds
- Reduce cut-through traffic volume
- Reduce the number and severity of collisions
- Improve the neighbourhood environment



Matchette Road at Titcombe Road

Source: www.ctvnews.ca

Matchette Road

Key Features

- A high traffic volume class 1 collector
- Posted speed limit: 50 km/hr.
- Emergency/Bus route
- Bonded by Nature Reserve :
 - Ojibway on South East
 - Tom Joy Woods on Northwest Side
- Speeding and high vehicular activities in the neighborhood
- The city reviewed the volume, speed to determine the suitable measures to address traffic concerns



Matchette Road

Source: windsorstar.com



Matchette Road around Ojibway Nature Center

Source: <https://windsor.ctvnews.ca/>

Matchette Road - Collisions Data (2015-2019)



Six (6) reducible collisions possible

- Four (4) at Matchette and Sprucewood Intersection
- Two (2) along Matchette Road Segment

Matchette Road - Speed & Volume Data

Vehicles Per Day	Speed Limit	85 th Percentile Speed
8886	50 km/h	69 km/h



Traffic Calming Objective

Reduce speeding on Matchette Road
without pushing traffic onto nearby local
roads

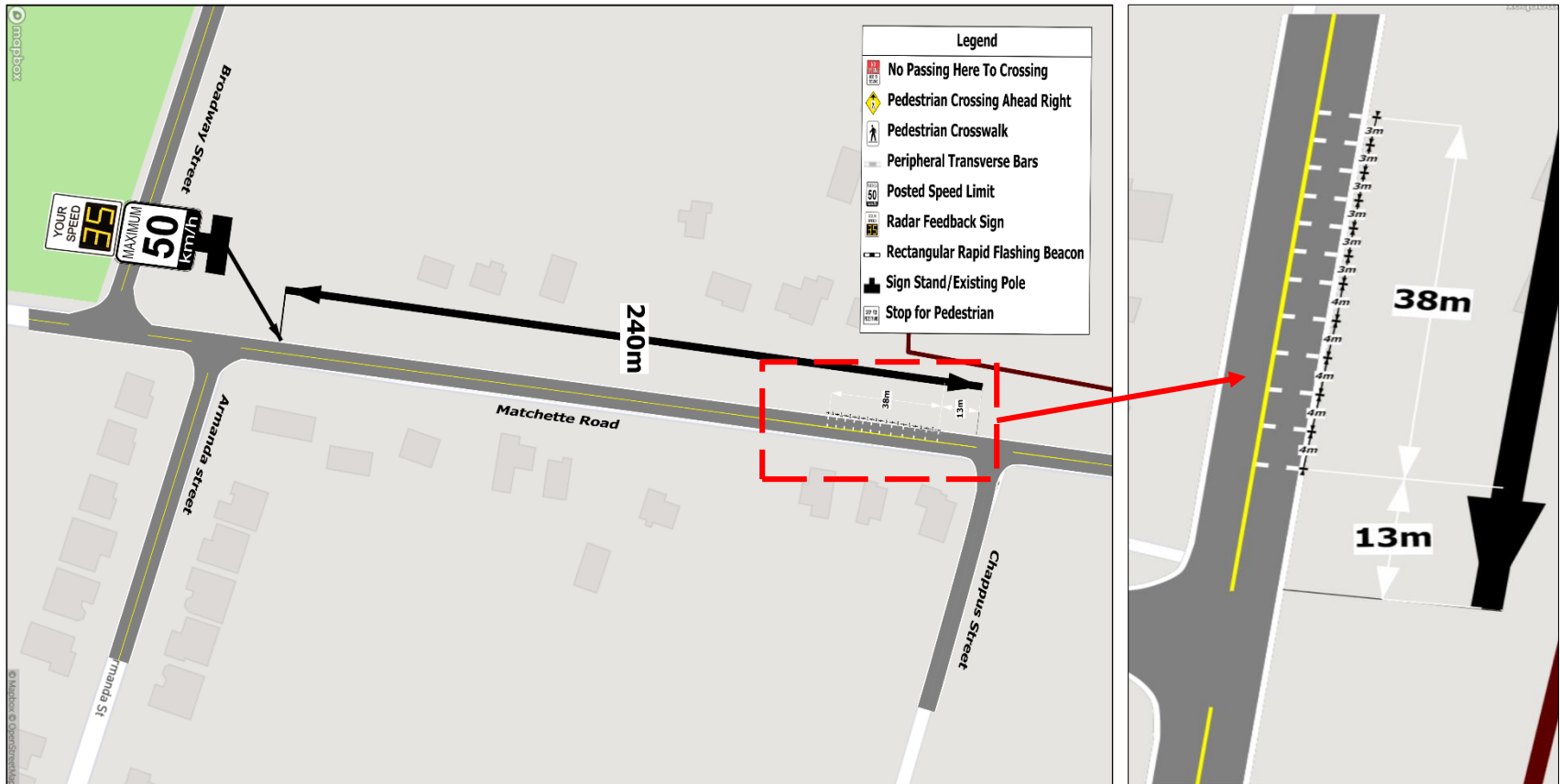
Selected Traffic Calming Measures

Speed management techniques recommended:

- Peripheral Transverse Bars
- Radar Feedback Signs

We highlight only the sections on Matchette Road where these measures are to be implemented

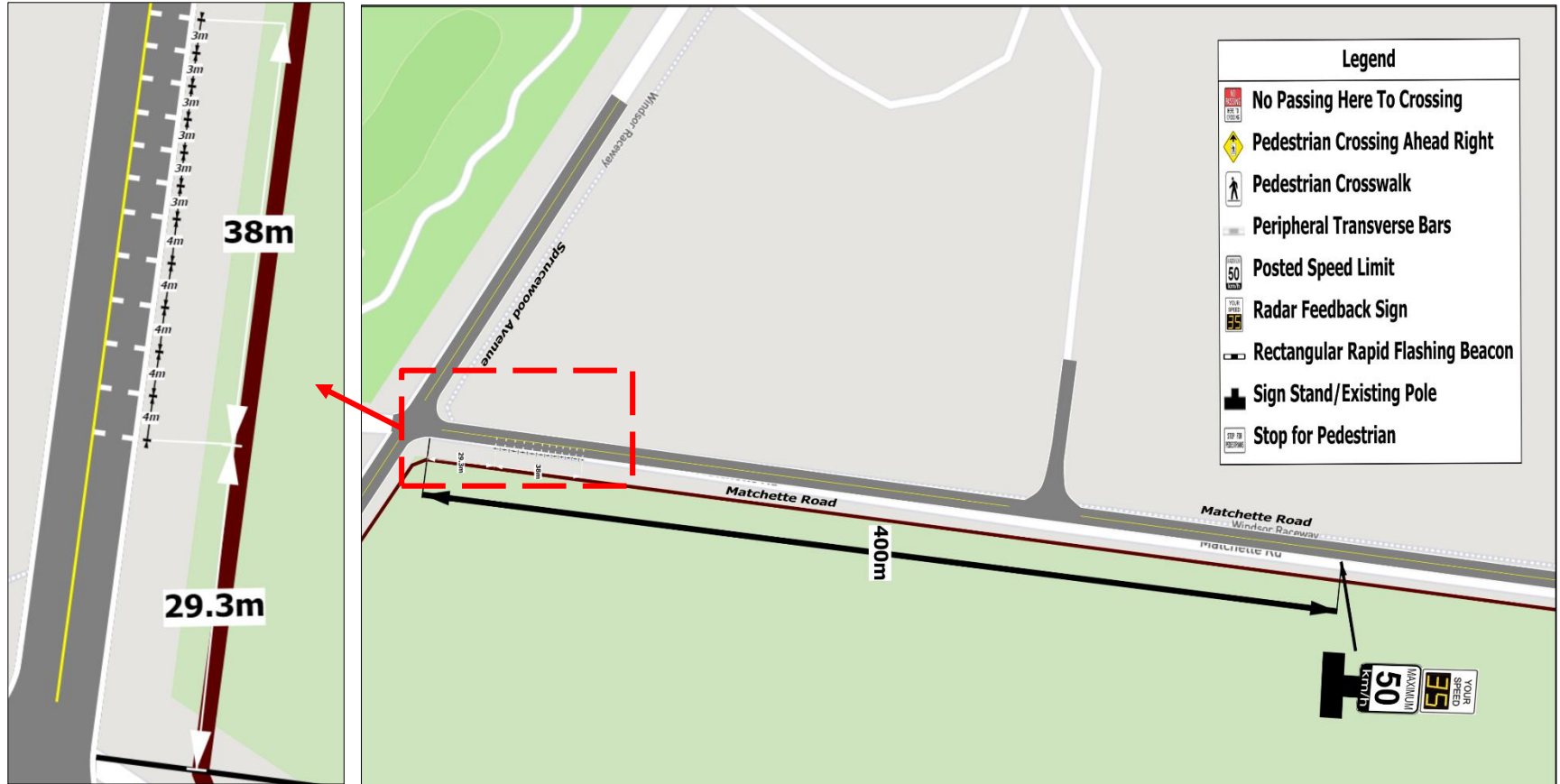
Proposed Concepts



Matchette Road at Chappus Street

- Adding **peripheral transverse bars** on Matchette road on the approach from Chappus street
- Beyond the **transverse bars**, adding a **radar feedback sign** to further serve as speed enforcement

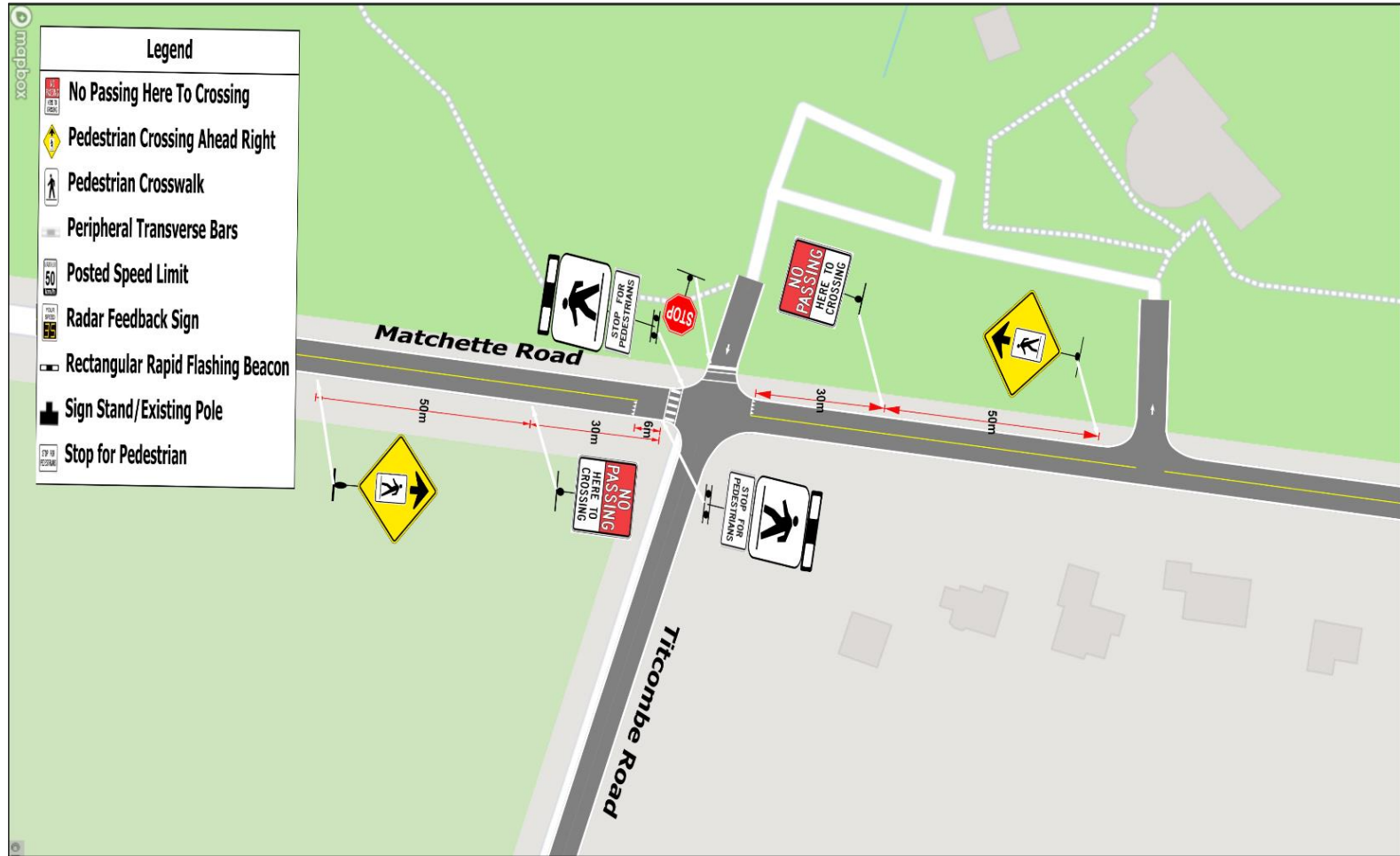
Proposed Concepts



Matchette Road at Sprucewood Avenue

- Adding **peripheral transverse bars** on Matchette road on approach from Sprucewood Avenue
- Similar to Chappus Street and beyond the **transverse bars**, a **radar feedback sign** is required for further speed enforcement

Other Future Consideration



Level 2 Type C Pedestrian Crossover at Titcombe and Matchette Road

- *Future consideration not included in the current implementation*

Potential Impact on the Neighbourhood

- Reduction in vehicular speed
- Improved community safety:
 - Reduction in numbers of collisions

Matchette Road – Next Steps

Review Feedbacks from Residents and Stakeholders
Deadline: March 1, 2022



Finalize Traffic Calming Plan



Approval Poll by Residents in the Project Area



Report to Environment, Transportation and Public Safety Standing Committee



Council Approval

Thank You!



Matchette Road Traffic Calming

Broadway Street to Sprucewood Avenue

Please provide comments by March 1st 2022