

Figure 74

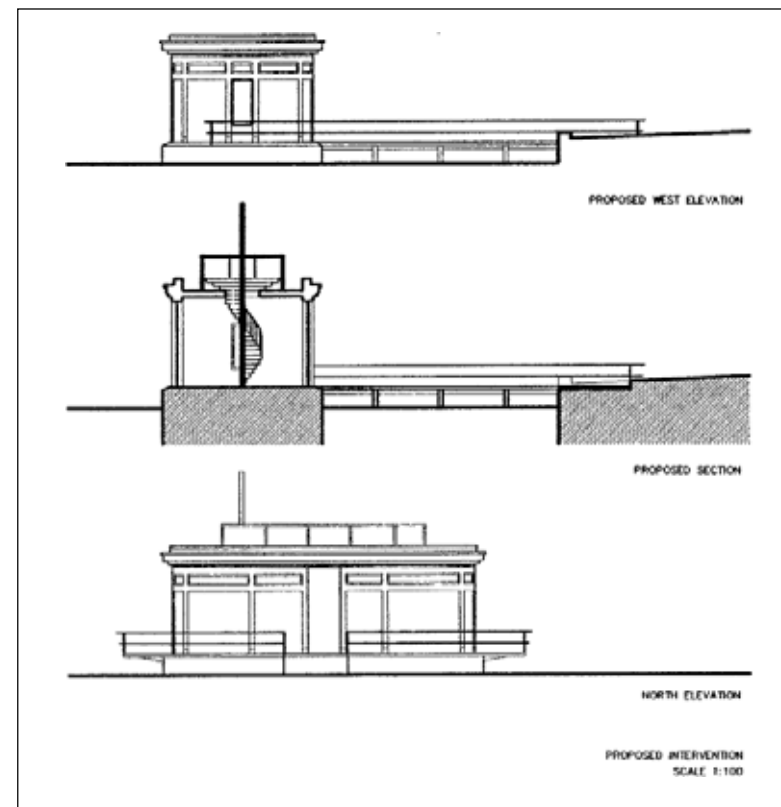


Figure 75

4.8 Segment 8: Bert Weeks Memorial Garden, Great Western Park and Joan and Clifford Hatch Wildflower Garden (Langlois Avenue to Moy Avenue)

Context:

Segment 8 occurs between the Marina and Hiram Walkers Distillery. (Figure 73)

The Bert Weeks Memorial Garden, Great Western Park and the Joan and Clifford Hatch Wildflower Garden collectively create a passive recreational area that has cultural, historical and archeological significance.

General Recommendations

- Bert Weeks Memorial Garden and Joan and Clifford Hatch Wildflower Gardens have been named to commemorate the contributions that these individuals have made to the Central Riverfront and overall development of the parks system. The development of the respective gardens should be in keeping with the character of the individuals being honored.
- As a significant First Nations site in the history of Windsor, the dominant theme will focus on the cultural, historical and archeological qualities of the site. It is recommended that the archeological aspects be investigated, specifically in the First Nations Interpretive Area.
- A complement of themes such as habitat creation, restorative landscaping, and stewardship will enhance the uniqueness of this segment and set it apart from the rest of the riverfront.
- Education and interpretation will be the underlying objective of all the themes in this segment.
- Access through and to the site will be primarily from the south portion of the site along the integrated River Walk/Recreationway systems. No cycling or vehicular circulation will occur along the edge of the river in order to preserve views, protect existing features and provide undisturbed areas for shoreline plantings and habitat creation.
- An informal shoreline path should be placed adjacent to the shoreline planting and wetland areas (i.e. elevated catwalk and overlook piers).
- Less formal connector trails will access destination points along the riverfront.
- Overlook piers to be accessed directly from the integrated River Walk and Recreationway system that may be used for fishing.

Specific Recommendations (west to east)

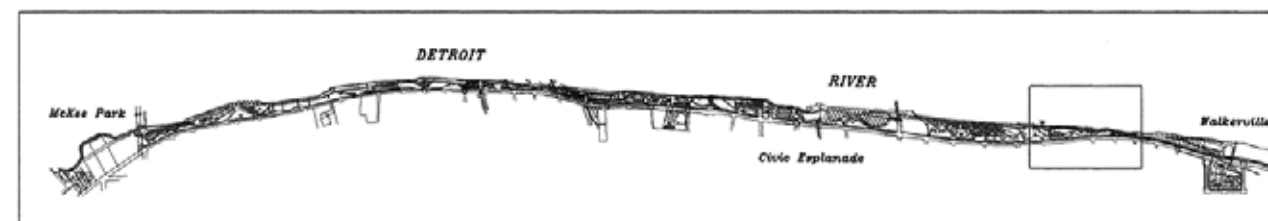
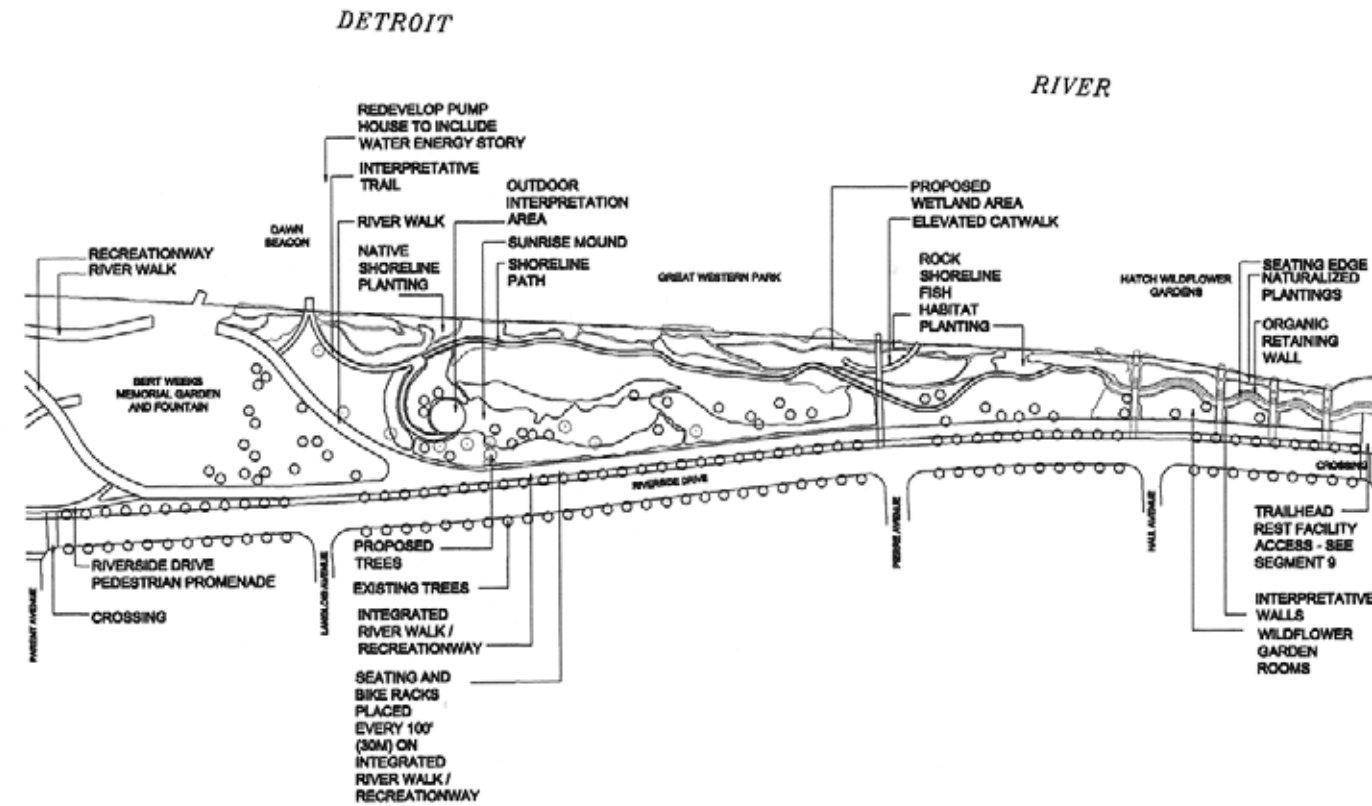
Bert Weeks Memorial Garden and Fountain

- The memorial fountain and garden are scheduled for construction in 2000/2001.
- Bert Weeks Memorial Garden was designed to pay homage to this former Mayor of Windsor, who fought for riverfront acquisition and parkland development.
- The fountain and gardens have been designed reminiscent of a watch and will include a noon mark in honor of Mr. Week's profession as a watchmaker.
- Mr. Weeks was an avid gardener and especially enjoyed visiting historic gardens; he particularly enjoyed fountains and waterfalls; thus this memorial is a fitting tribute to Mr. Weeks.

Dawn Beacon/1800's Pump House (see Section 3.1.5) (Figures 74 and 75)

The 1800s Pump House is the only remaining heritage building on the north side of Riverside Drive along the Central Riverfront. The original function of this building was as a pump house for the Waterworks plant that was on shore at this location in the late 1800's early 1900's. (Photos 67 and 68)

SEGMENT 8



The potential to access this structure set out in the river, becomes a unique destination affording a more direct experience of the River. It provides unobstructed views in all directions but particularly to the east in the direction of the sunrise. This Beacon has the potential to be powered by water. **(Figure 76)**

Joan and Clifford Hatch Wildflower Gardens/Great Western Park

Of all the landscape features found in this Segment, the earthwork is the most visually significant. Oriented to face the sunrise and built upon a high point of topography, the mound is a quiet place for contemplation and reflection. **(Photo 69 and Figure 77)**

- Wildflower garden “rooms” consisting of native plantings that have diverse themes such as a butterfly garden, a scented garden and gardens organized by colour or seasonal focus.
- Sinuous organic retaining wall, made from wood and stone to provide terraced area for wildflower garden. First Nations interpretive elements to be incorporated. **(Photo 70)**
- Outdoor interpretation installations will provide access to the mound and incorporate educational and interpretive information.
- Seating areas convenient for viewing the gardens and the river to be provided.
- Cantilevered piers used for viewing and fishing accessed from the shared trail system along Riverside Drive by walkways.
- First Nations narrative and story to be incorporated.
- This area of the riverfront has archeological significance and is recommended for further investigation.

Eastern Reach Shoreline

- Armor Stone and Beach shoreline with fish habitat enhancements.
- On-shore plantings that shade the water, stabilize the shore and create wetland areas.
- Naturalized Riverbank plantings.
- Interpretive signage to be provided regarding history of Moy Wharf.

Trail Head and Rest Facility

- A rest facility incorporating public washrooms, telephones and storage facilities should be located at the eastern end of this segment, directly west of the Hiram Walker lands. As the eastern gateway on the riverfront, maps and other event information should be available here.
- Facility has the potential to be solar powered.

Environmental Assessment Implications

There are no outstanding provincial EA requirements for the proposed facilities and works in Segment 8. Between Langlois Avenue and Moy Avenue, a sloping rock revetment (armor stone) will address a shoreline erosion problem, as documented in the ESR for the Riverfront Park Shoreline submitted by BTS Consulting Engineers. These works may proceed without further provincial EA compliance.

As the new shoreline revetment in this segment entails in-water construction works in the Detroit River, approvals under the federal Fisheries Act and the Navigable Waters Protection Act are also required. Approvals under these federal statutes “trigger” the application of CEAA. A “screening” process under CEAA is underway at present, following which the shoreline works in this segment may be constructed.



Figure 76



Photo 69



Figure 77