

CENTRAL RIVERFRONT IMPLEMENTATION PLAN

Ward Meeting
Public Drop-In
Centres

WHAT IS CRIP?

Central

Riverfront

Implementation

Plan



WHAT IS CRIP?

Central Riverfront Implementation Plan

- Prepared in 2000 by Consultants and City Staff with extensive public consultation.
- Created to record the community's vision and establish the framework for development of the Central Riverfront Lands.

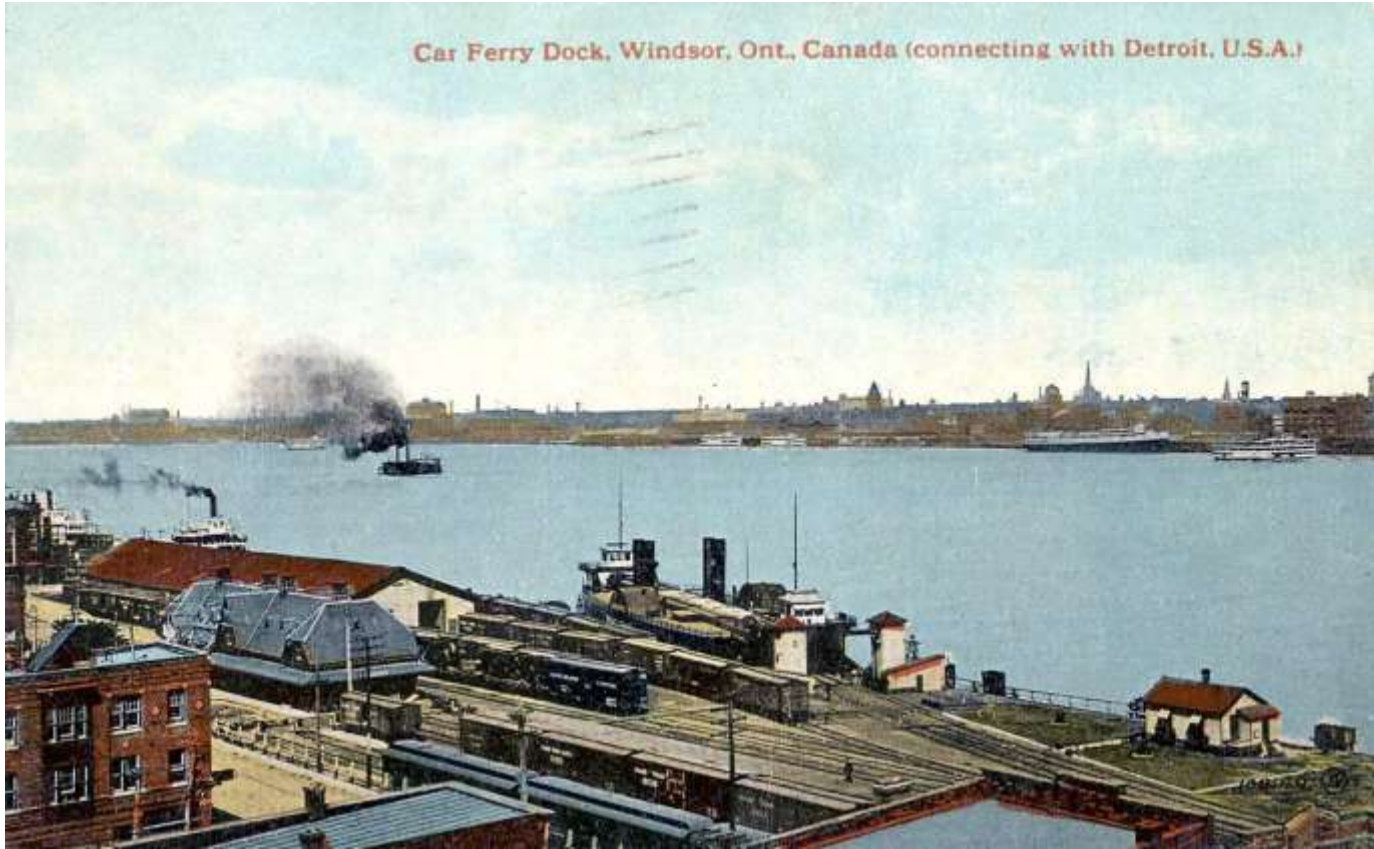
WHY THIS MEETING?

We are approximately at the **mid-point** of the 25 year planning time frame during which **CRIP** was to be implemented.

A lot has been accomplished in 13 years and it is **time to review** the plans.

Please tell us what you think!

Car Ferry Dock, Windsor, Ont., Canada (connecting with Detroit, U.S.A.)



FROM THE ARCHIVES

CENTRAL RIVERFRONT
IMPLEMENTATION PLAN REVIEW



FROM THE ARCHIVES

Windsor
Riverfront
1956

CENTRAL RIVERFRONT
IMPLEMENTATION PLAN REVIEW



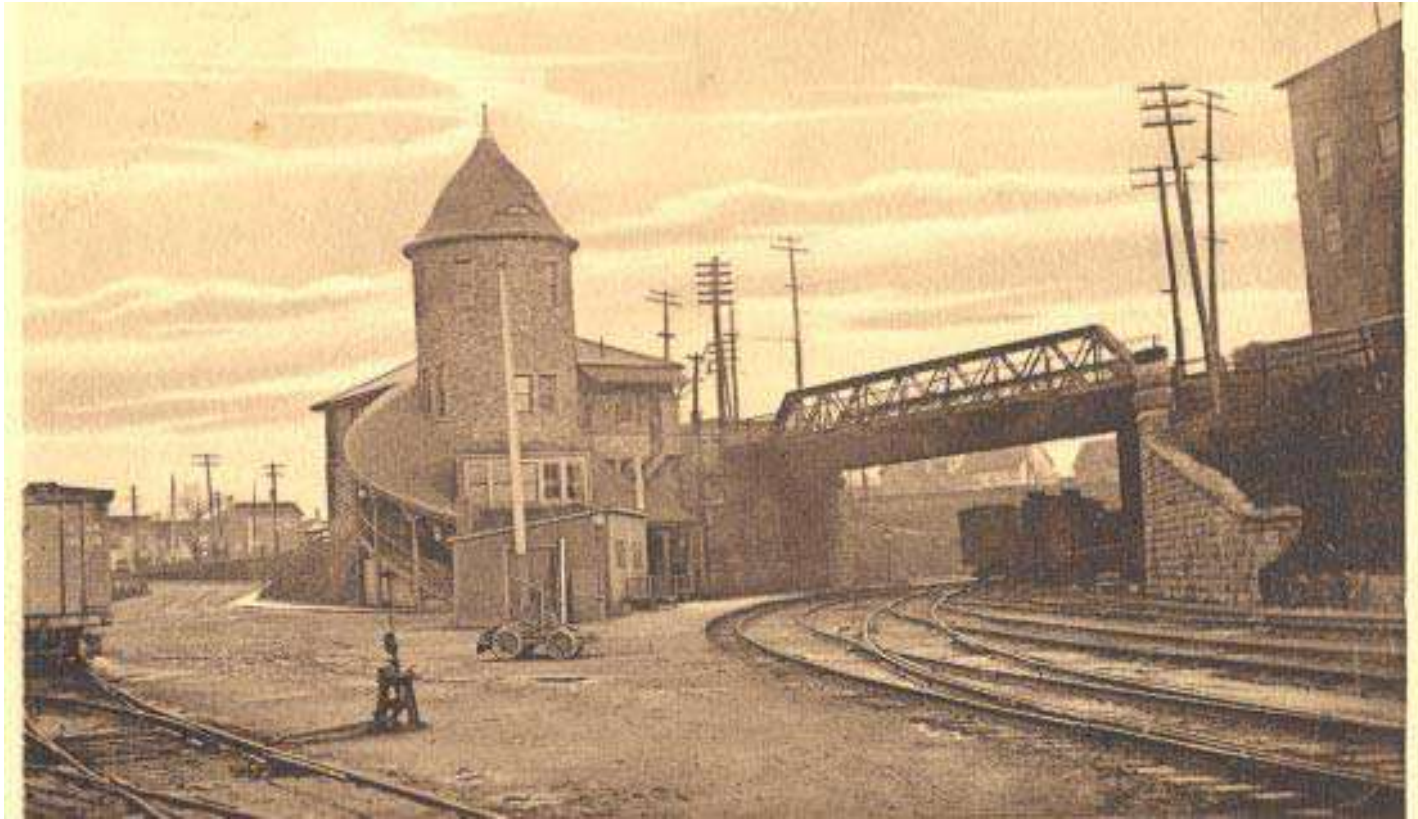


FROM THE ARCHIVES

Windsor
Riverfront
1999

CENTRAL RIVERFRONT
IMPLEMENTATION PLAN REVIEW





FROM THE ARCHIVES

CENTRAL RIVERFRONT
IMPLEMENTATION PLAN REVIEW

BEFORE



EXAMPLE
OF WHAT
HAS BEEN
COMPLETED

RTB
SHORELINE

CENTRAL RIVERFRONT
IMPLEMENTATION PLAN REVIEW



DURING



EXAMPLE
OF WHAT
HAS BEEN
COMPLETED

RTB
SHORELINE

CENTRAL RIVERFRONT
IMPLEMENTATION PLAN REVIEW



AFTER



EXAMPLE
OF WHAT
HAS BEEN
COMPLETED

RTB
SHORELINE

CENTRAL RIVERFRONT
IMPLEMENTATION PLAN REVIEW



BEFORE



EXAMPLE
OF WHAT
HAS BEEN
COMPLETED

CLIFF AND
JOAN HATCH
MEMORIAL
GARDENS

CENTRAL RIVERFRONT
IMPLEMENTATION PLAN REVIEW



DURING



EXAMPLE
OF WHAT
HAS BEEN
COMPLETED

CLIFF AND
JOAN HATCH
MEMORIAL
GARDENS

CENTRAL RIVERFRONT
IMPLEMENTATION PLAN REVIEW



COMPLETED



EXAMPLE
OF WHAT
HAS BEEN
COMPLETED

CLIFF AND
JOAN HATCH
MEMORIAL
GARDENS

CENTRAL RIVERFRONT
IMPLEMENTATION PLAN REVIEW

USE AND PLACEMENT OF BEACONS

The CRIP Study provided for five “park pavilions” called Beacons as a framework for the Central Riverfront Park



THE FIVE ORIGINAL BEACONS



Dawn



Peace



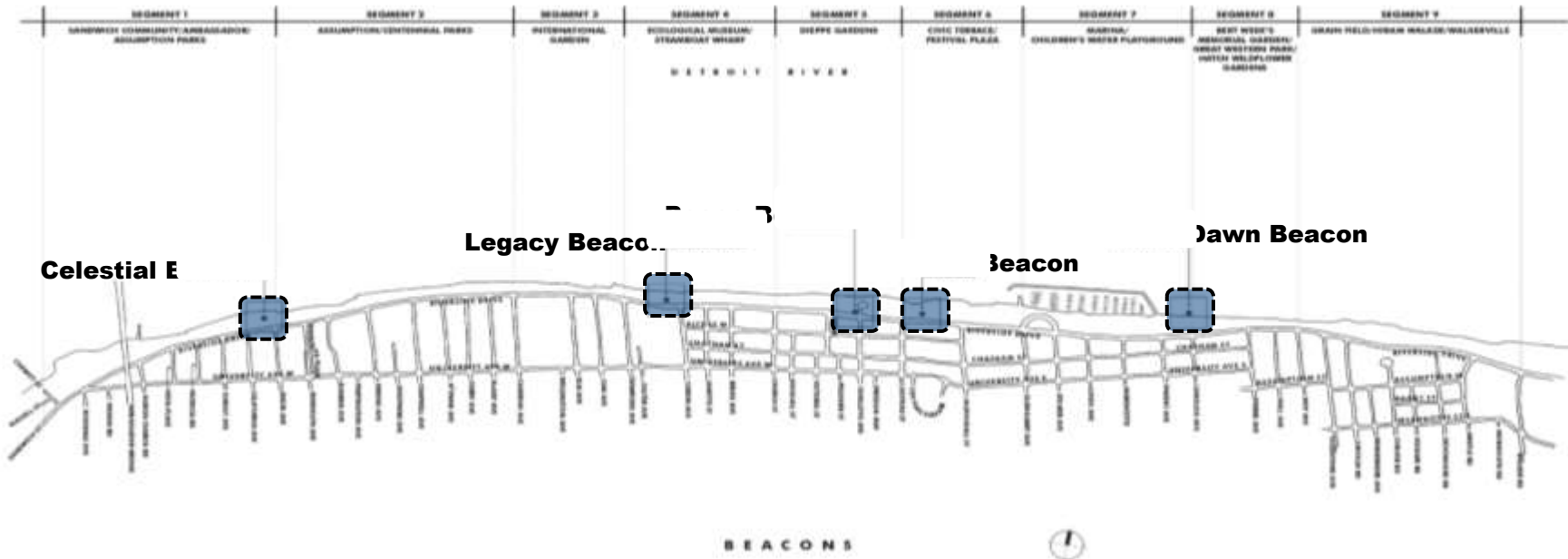
Celestial



City



Legacy



CENTRAL RIVERFRONT
IMPLEMENTATION PLAN REVIEW

ORIGINAL BEACON PLAN



DAWN BEACON

CENTRAL RIVERFRONT
IMPLEMENTATION PLAN REVIEW



CITY BEACON

CENTRAL RIVERFRONT
IMPLEMENTATION PLAN REVIEW



PEACE BEACON

CENTRAL RIVERFRONT
IMPLEMENTATION PLAN REVIEW



LEGACY BEACON

CENTRAL RIVERFRONT
IMPLEMENTATION PLAN REVIEW



CELESTIAL BEACON

CENTRAL RIVERFRONT
IMPLEMENTATION PLAN REVIEW

SO FAR, THE PEACE BEACON HAS BEEN CONSTRUCTED

Original Rendering

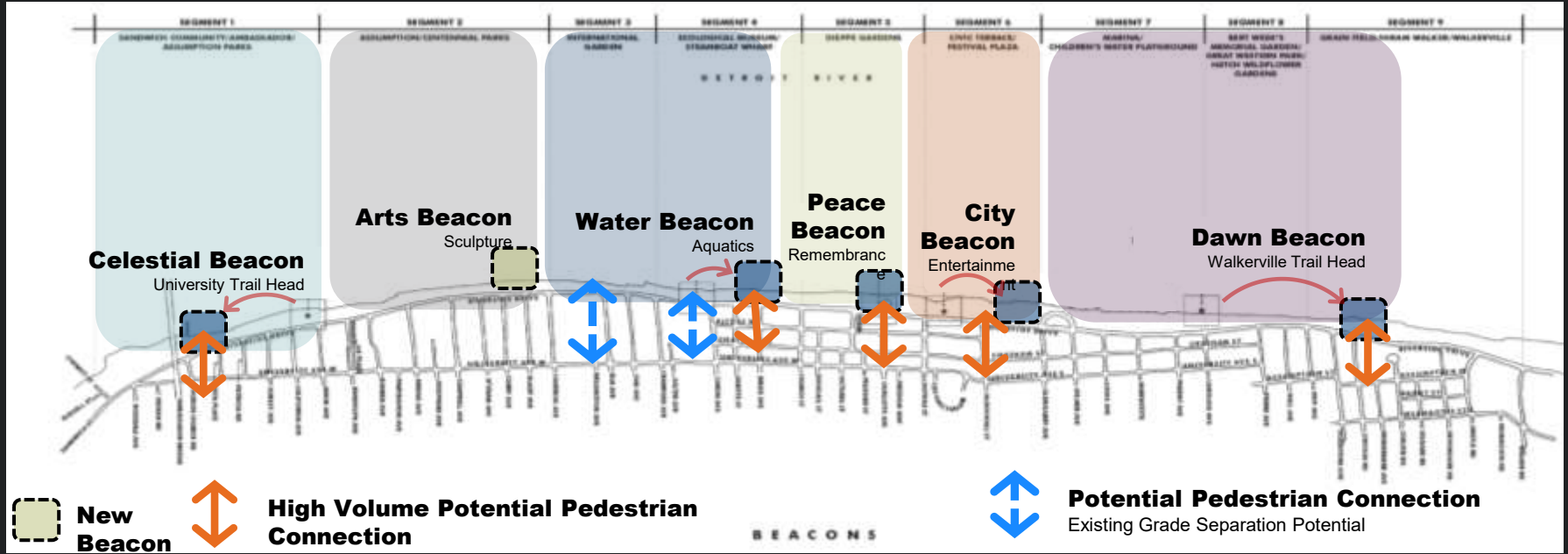


As Constructed



SHOULD ANY CHANGES TO THE BEACON PLAN BE CONSIDERED?







POSSIBLE
RELOCATED
DAWN
BEACON

CENTRAL RIVERFRONT
IMPLEMENTATION PLAN REVIEW

POSSIBLE
RELOCATED
DAWN
BEACON



CENTRAL RIVERFRONT
IMPLEMENTATION PLAN REVIEW



POSSIBLE WATER BEACON (RELOCATED LEGACY BEACON)

CENTRAL RIVERFRONT
IMPLEMENTATION PLAN REVIEW



POSSIBLE
ARTS
BEACON
(WITH
SEASONAL
COMMERCIAL)

CENTRAL RIVERFRONT
IMPLEMENTATION PLAN REVIEW



POSSIBLE
ARTS
BEACON
(WITH
SEASONAL
COMMERCIAL)

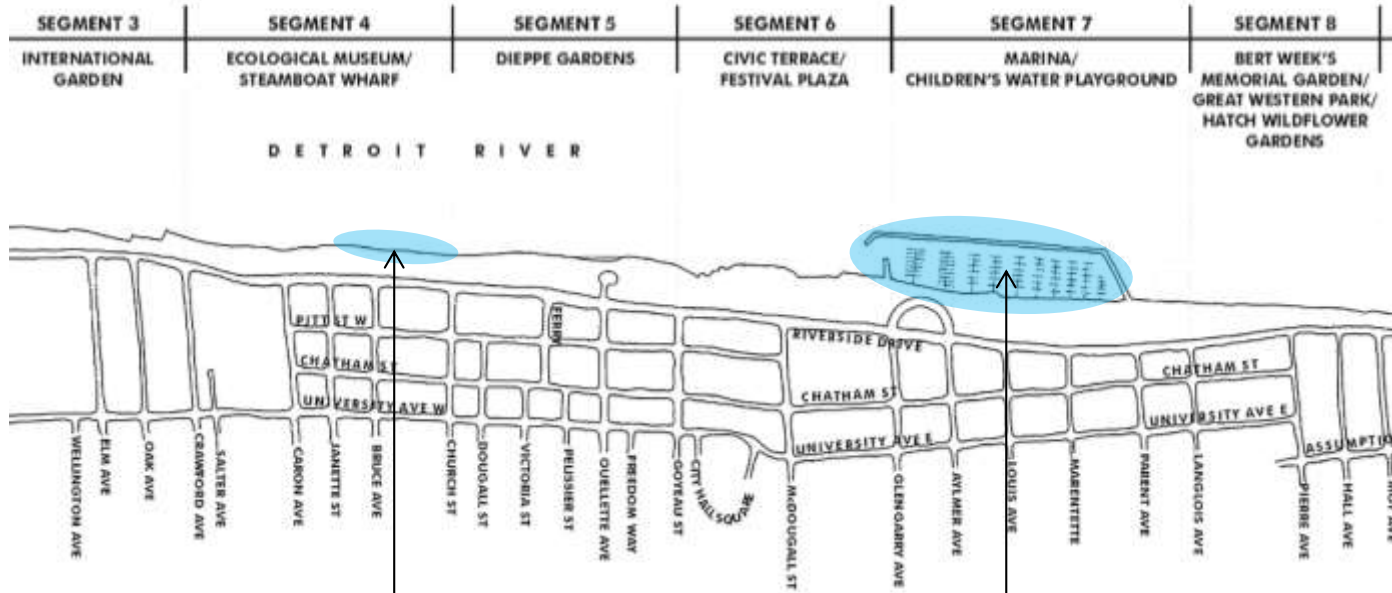
CENTRAL RIVERFRONT
IMPLEMENTATION PLAN REVIEW



POSSIBLE
ARTS
BEACON
(WITH
SEASONAL
COMMERCIAL)

CENTRAL RIVERFRONT
IMPLEMENTATION PLAN REVIEW

MARINA (LOCATIONS UNDER CONSIDERATION)



OPTIONAL MARINA SITE
(BETWEEN CHURCH STREET
AND JANETTE STREET)

ORIGINAL CRIP MARINA SITE
(BETWEEN GLENGARRY AVENUE
AND PARENT AVENUE)

CENTRAL RIVERFRONT
IMPLEMENTATION PLAN REVIEW



EXISTING SITE



PROPOSED

MARINA (ORIGINAL CRIP SITE)

CENTRAL RIVERFRONT
IMPLEMENTATION PLAN REVIEW



EXISTING SITE



RENDERING

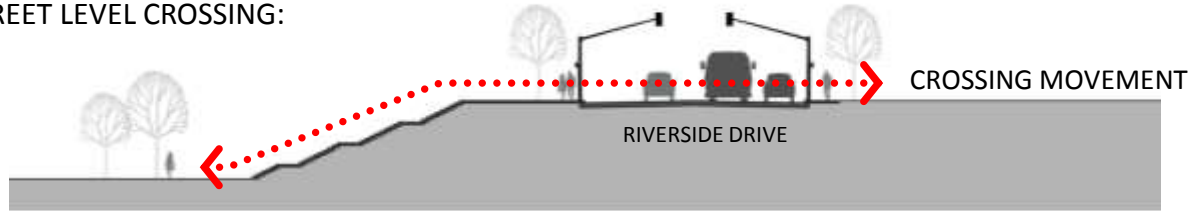


PROPOSED

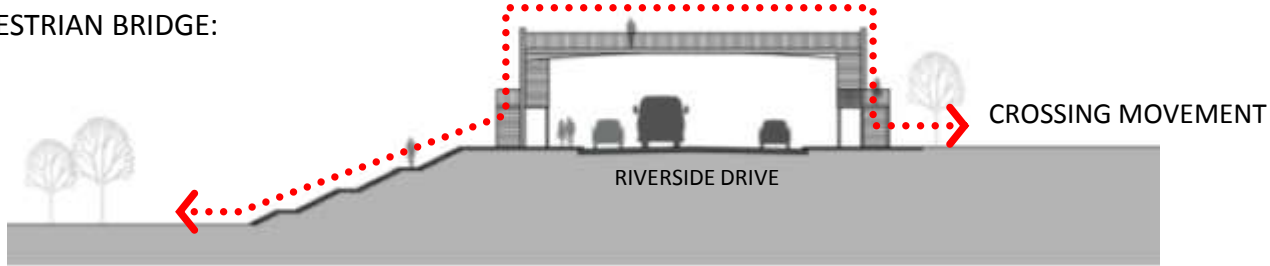
MARINA (OPTIONAL SITE NEAR ART GALLERY)

CENTRAL RIVERFRONT
IMPLEMENTATION PLAN REVIEW

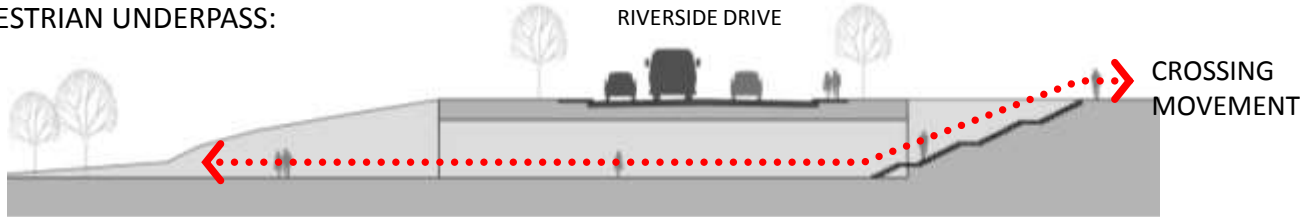
STREET LEVEL CROSSING:



PEDESTRIAN BRIDGE:

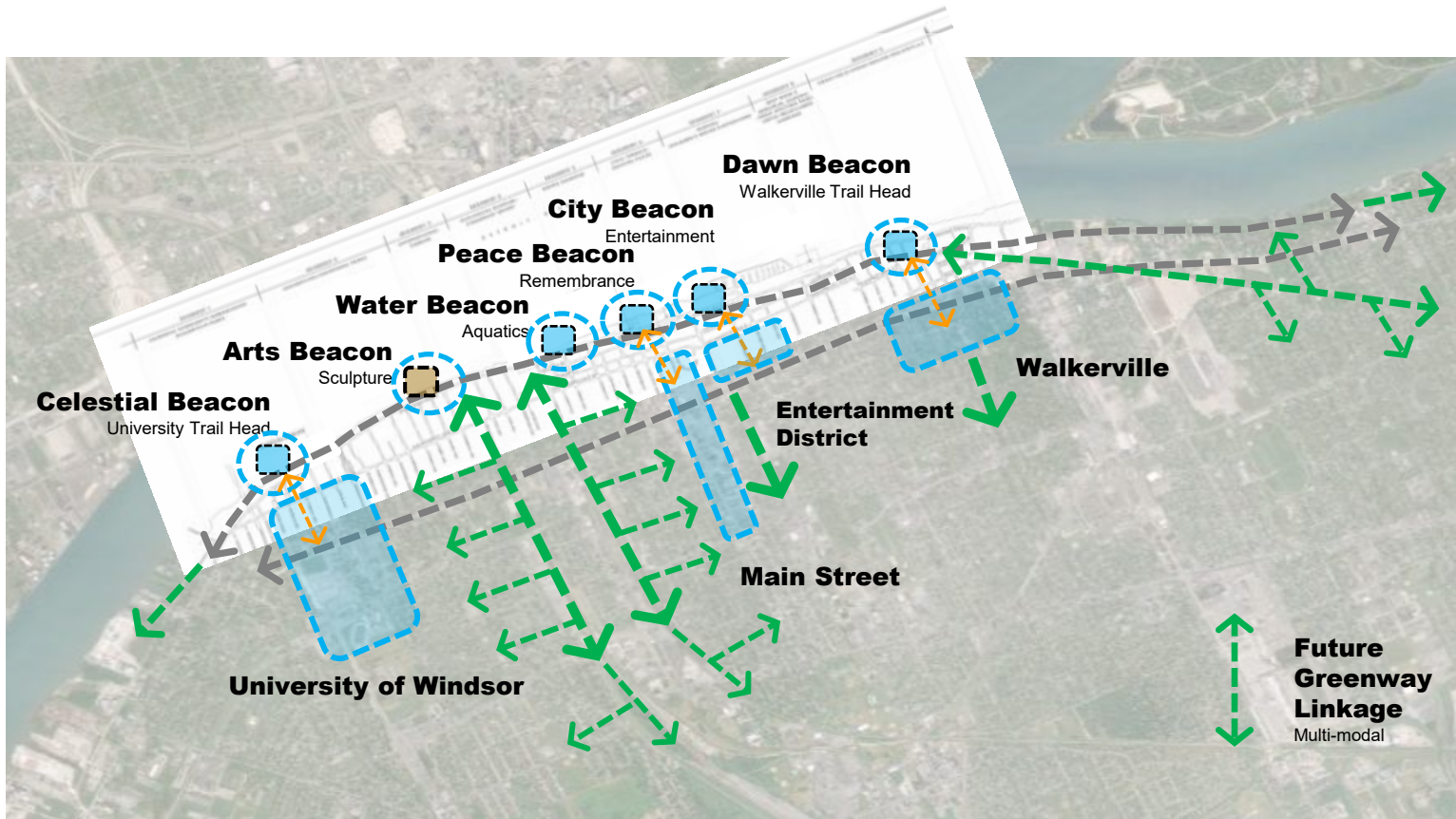


PEDESTRIAN UNDERPASS:



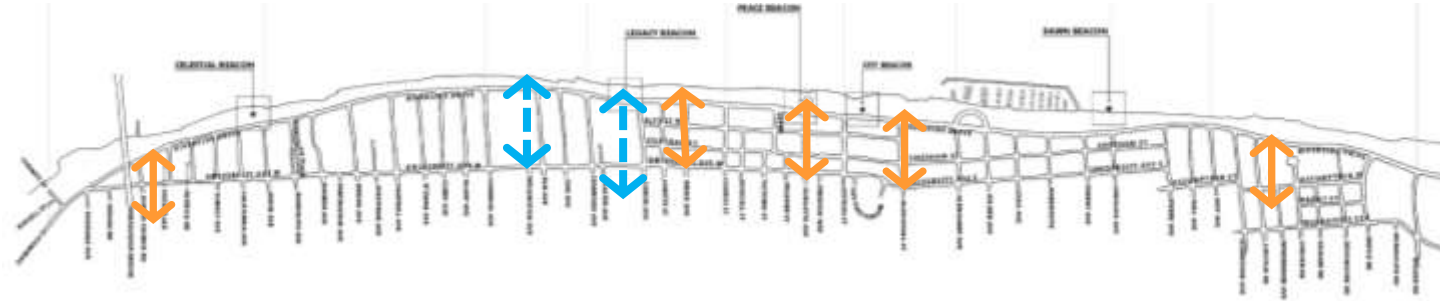
CONNECTIVITY TO THE SOUTH (TYPES OF CROSSINGS)

CENTRAL RIVERFRONT
IMPLEMENTATION PLAN REVIEW



Proposed Connectivity to City

CONNECTIVITY TO THE SOUTH (POTENTIAL CROSSING LOCATIONS)



LEGEND

	HIGH VOLUME POTENTIAL PEDESTRIAN CONNECTION		POTENTIAL PEDESTRIAN CONNECTION (EXISTING GRADE SEPARATION LOCATIONS)
---	---	---	---

CENTRAL RIVERFRONT
IMPLEMENTATION PLAN REVIEW





CONNECTIVITY TO THE SOUTH (EXAMPLE)

CENTRAL RIVERFRONT
IMPLEMENTATION PLAN REVIEW



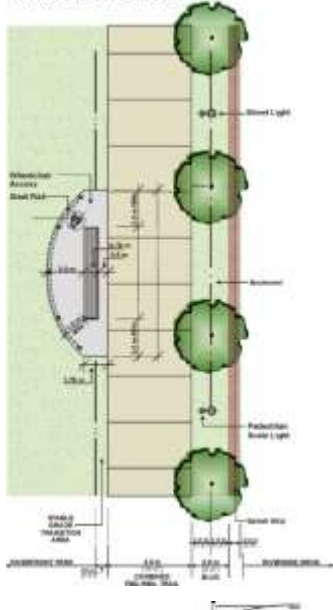


CONNECTIVITY TO THE SOUTH (CROSSING EXAMPLES)

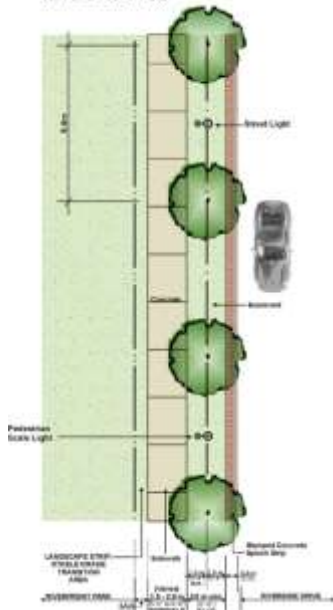
CENTRAL RIVERFRONT
IMPLEMENTATION PLAN REVIEW



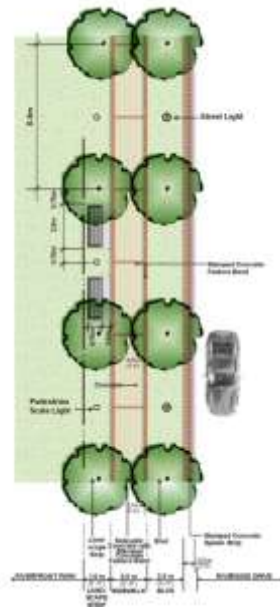
RIVERSIDE DRIVE PROMENADE
HURON CHURCH TO CAMERON



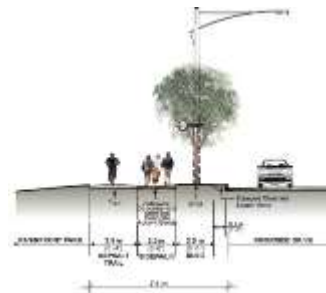
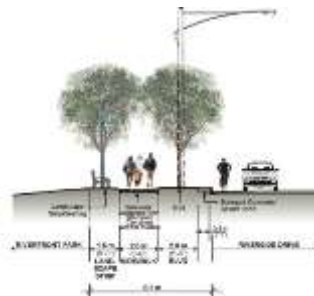
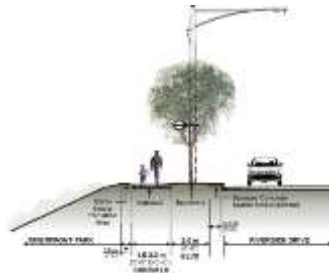
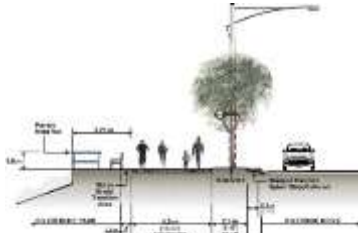
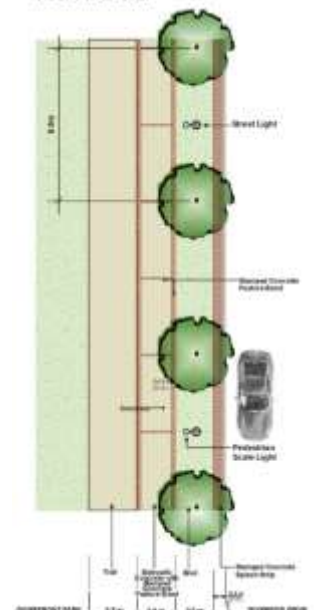
RIVERSIDE DRIVE PROMENADE
(CAMERON TO CARON)



RIVERSIDE DRIVE PROMENADE (CARON TO PARENT)



RIVERSIDE DRIVE PROMENADE
PARENT TO LINCOLN



RIVERSIDE DRIVE WALKABILITY

CENTRAL RIVERFRONT
IMPLEMENTATION PLAN REVIEW

RIVERSIDE DRIVE WALKABILITY



TWO LANES WITH ANGLED PARKING



TWO LANES WITH PARALLEL PARKING



CENTRAL RIVERFRONT
IMPLEMENTATION PLAN REVIEW





interaction



light patterns



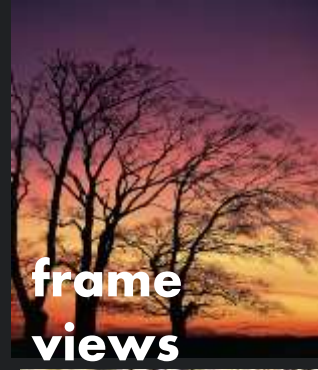
lighting



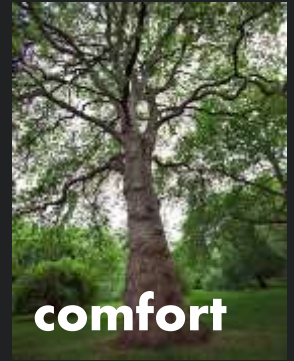
habitat



winter interest



frame views



comfort



sense of place



define space



shade



grandeur



focal point



back drop

COMMERCIAL DEVELOPMENT (EXAMPLES)



CENTRAL RIVERFRONT
IMPLEMENTATION PLAN REVIEW