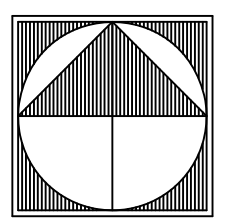
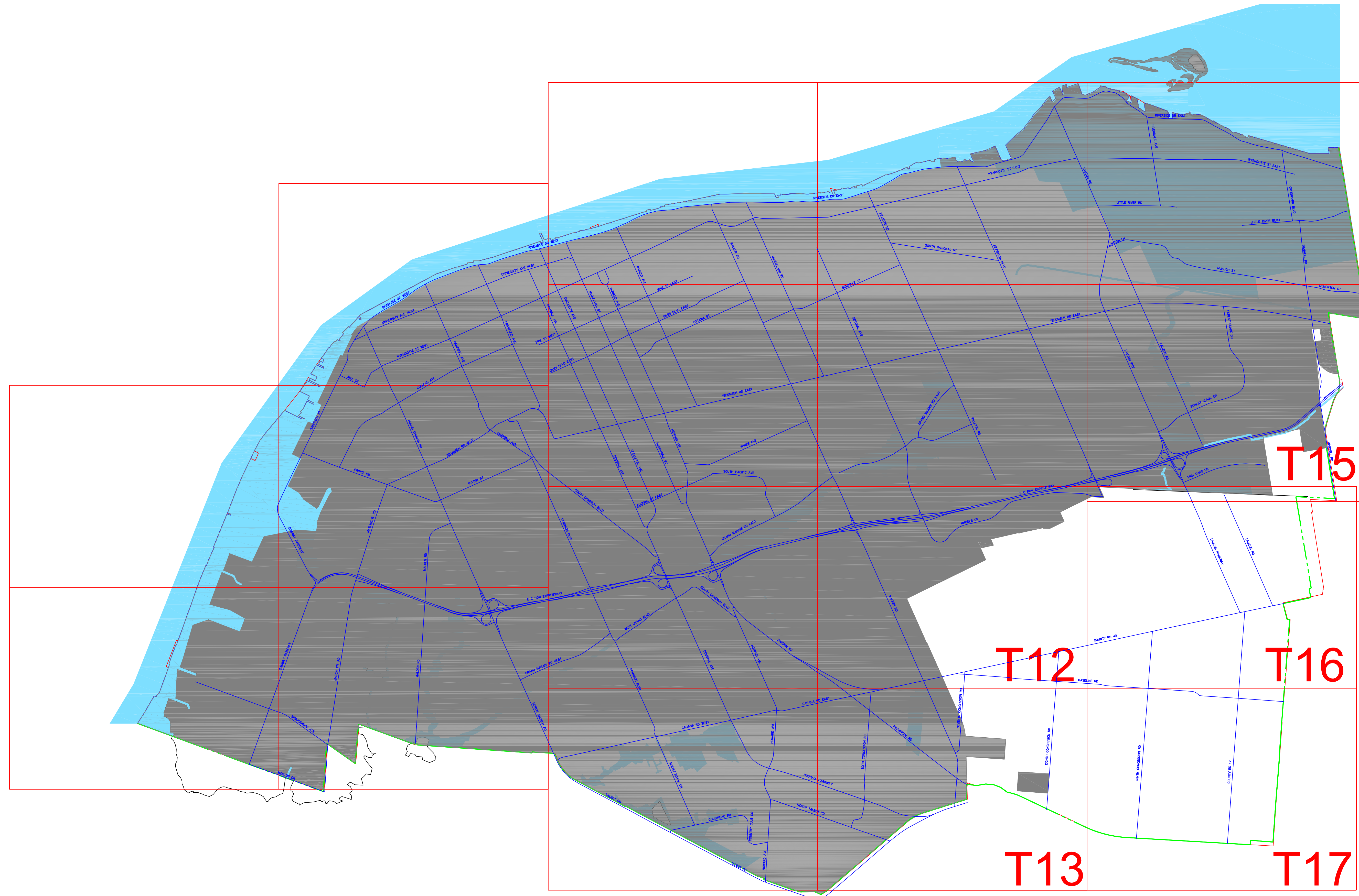


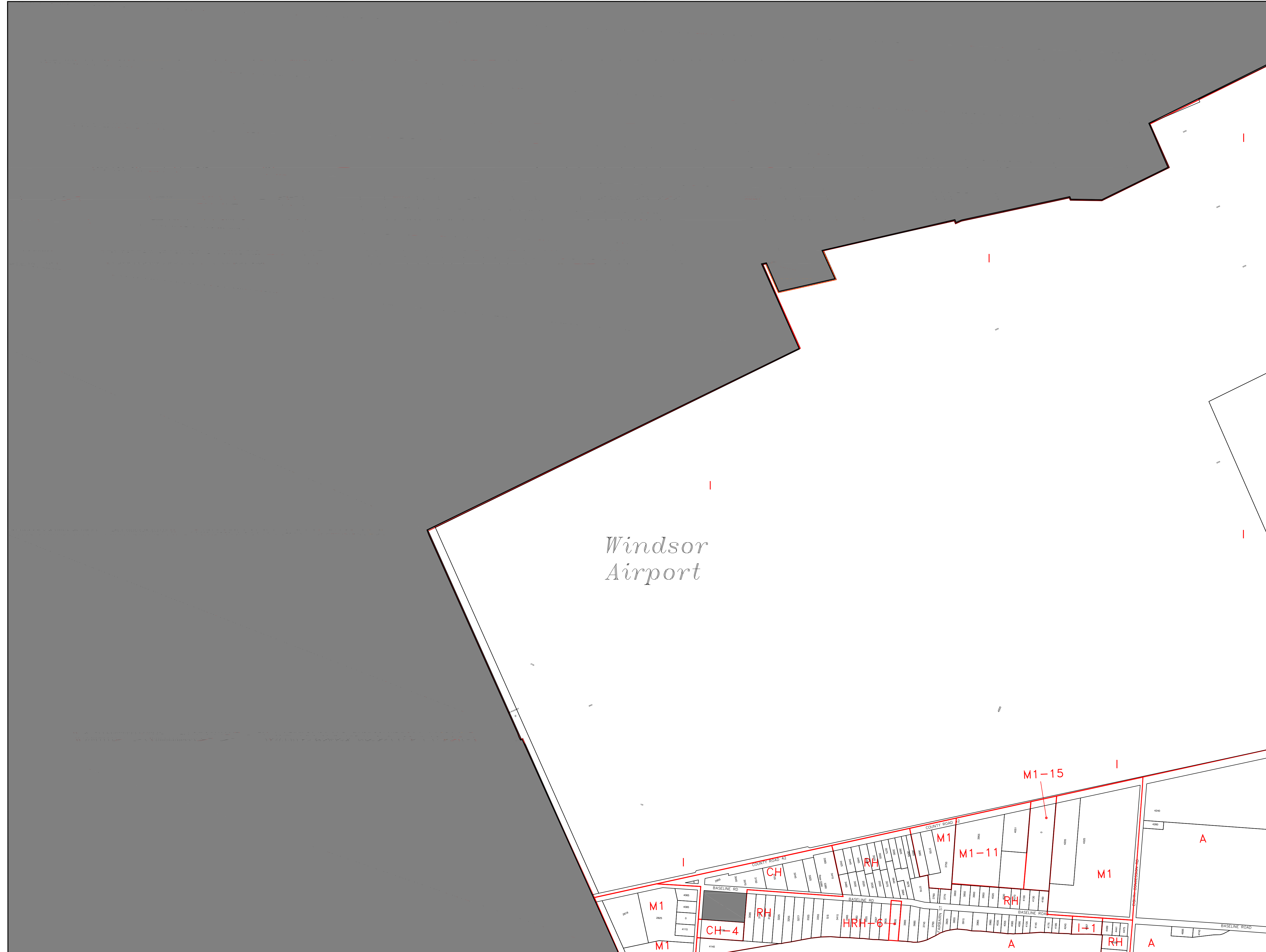
# Zoning District Maps Bylaw 85-18



N.T.S.

City of Windsor Zoning  
Zoning District Map Grid

# Zoning Map T12



**LEGEND:**

- Zone Boundary<sup>1</sup>
- - - - Specific Temporary Zoning Exemptions
- Registered Plan Parcel Limits
- Ownership Parcel Limits
- Municipal Boundary Line
- Floodplain Development Content / Area (See Subsection 5.40)

- NOTES:**
1. Each Zone symbol corresponds to a zoning district set out in the text of By-law 85-18 (i.e. BP - Business Park )
- R1.\_ - Residential Zone 1 - See Section 6
  - RH.\_ - Hamlet Residential - See Section 7
  - CH.\_ - Hamlet Commercial - See Section 10
  - CR.\_ - Rural Commercial - See Section 11
  - M1.\_ - Industrial Zone - See Section 14
  - A.\_ - Agriculture - See Section 15
  - I.\_ - Institutional - See Section 16
  - P.\_ - Park and Open Space - See Section 17
  - BP.\_ - Business Park - See Section 19

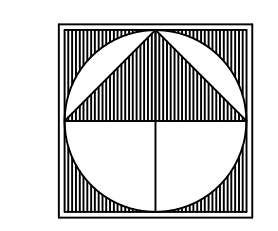
An H symbol preceding the zone symbol represents a hold on the issuance of a building permit until specific development preconditions have been satisfied. Section 4.5 specifies the uses permitted until such time as the H symbol is removed by an amending by-law approved by Council.

DATE:		REVISIONS		REV. BY:	APPROVED BY:
19/06/18		BY-LAW #	59-2018	DH	AS
26/09/20		112-2020		DH	AS

This forms Part of Schedule 'A'.

## Town Of Tecumseh Zoning By-law 85-18

Scale 1:6000



Area Subject to City Of Windsor Zoning By-Law 8600

Zoning Maps

## Zoning Map T12

# Zoning Map T13



**LEGEND:**

- Zone Boundary<sup>1</sup>
- - - Specific Temporary Zoning Exemptions
- Registered Plan Parcel Limits
- Ownership Parcel Limits
- Municipal Boundary Line
- █ Floodplain Development Content / Area (See Subsection 5.40)

**NOTES:**

1. Each Zone symbol corresponds to a zoning district set out in the text of By-law 85-18(i.e. BP - Business Park )

R1_	- Residential Zone 1	- See Section 6
RH_	- Hamlet Residential	- See Section 7
CH_	- Hamlet Commercial	- See Section 10
CR_	- Rural Commercial	- See Section 11
M1_	- Industrial Zone	- See Section 14
A_	- Agriculture	- See Section 15
I_	- Institutional	- See Section 16
P_	- Park and Open Space	- See Section 17
BP_	- Business Park	- See Section 19

An H symbol preceding the zone symbol represents a hold on the issuance of a building permit until specific development preconditions have been satisfied. Section 4.5 specifies the uses permitted until such time as the H symbol is removed by an amending by-law approved by Council.

REVISIONS			
DATE:	BY-LAW #	REV. BY:	APPROVED BY:

Area Subject To City Of Windsor Zoning By-law 8600

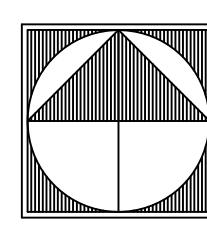
Zoning Maps

*Town of Tecumseh*

This forms Part of Schedule 'A'.

## Town Of Tecumseh Zoning By-law 85-18

Scale 1:6000



## Zoning Map T13

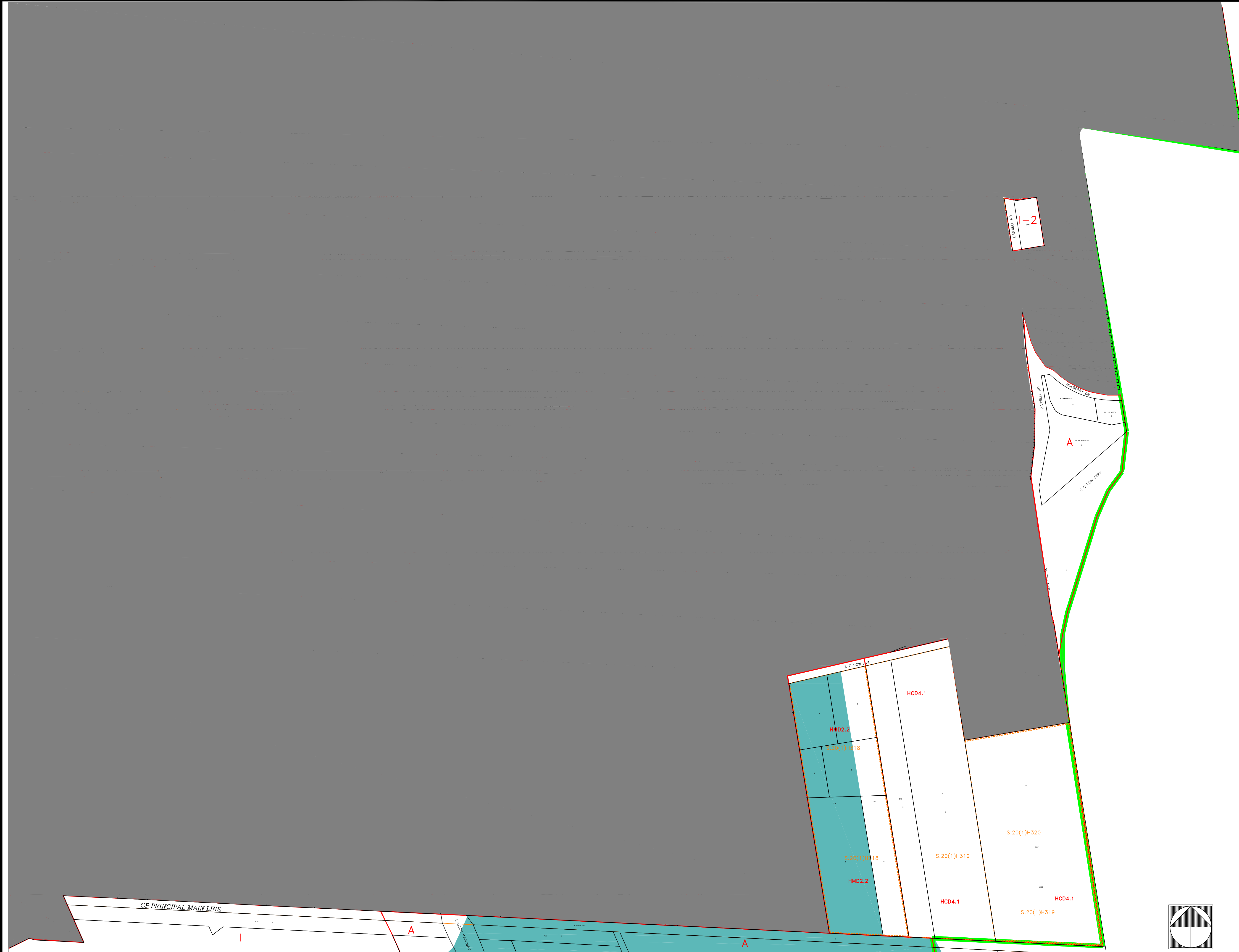
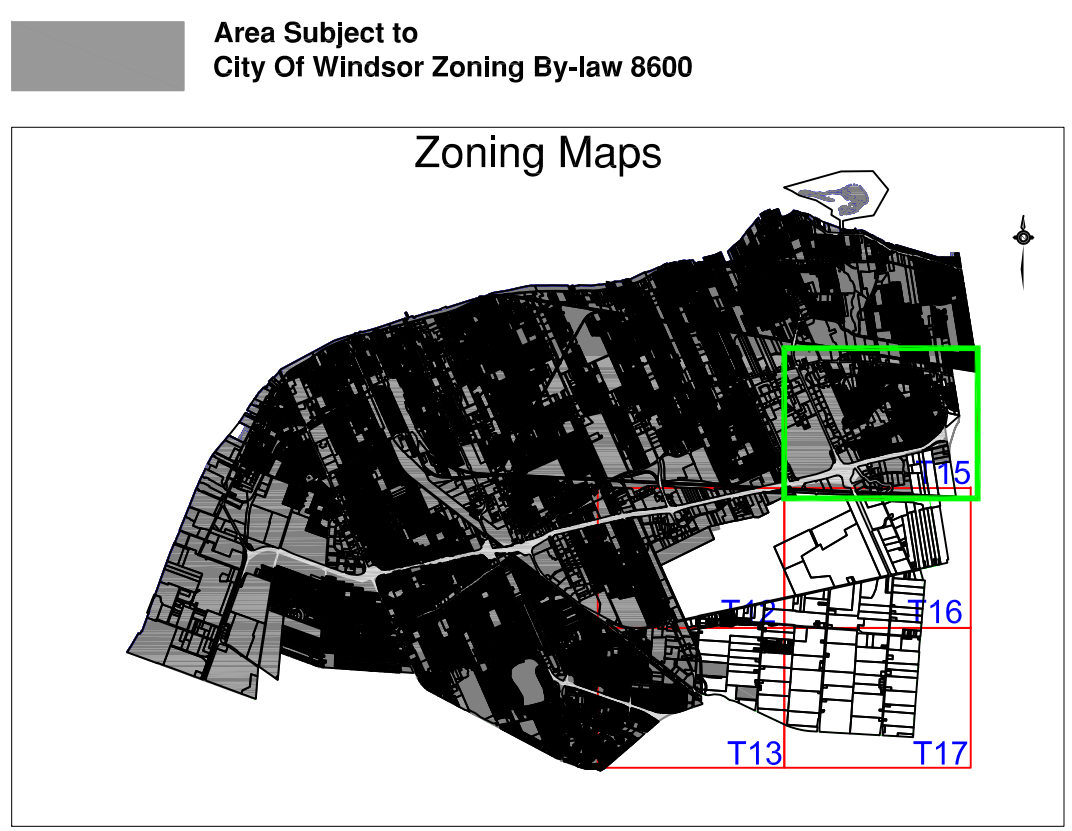
# Zoning Map T15

**LEGEND:**

-  Zone Boundary<sup>1</sup>
-  Specific Temporary Zoning Exemptions
-  Registered Plan Parcel Limits
-  Ownership Parcel Limits
-  Municipal Boundary Line
-  Floodplain Development Content / Area (See Subsection 5.40)

- NOTES:**
- Each Zone symbol corresponds to a zoning district set out in the text of By-law 85-18(i.e. BP - Business Park )
- |     |                       |                   |
|-----|-----------------------|-------------------|
| R1_ | - Residential Zone 1  | - See Section 6   |
| RH_ | - Hamlet Residential  | - See Section 7   |
| CH_ | - Hamlet Commercial   | - See Section 10  |
| CR_ | - Rural Commercial    | - See Section 11  |
| M1_ | - Industrial Zone     | - See Section 14  |
| A_  | - Agriculture         | - See Section 15  |
| I_  | - Institutional       | - See Section 16  |
| P_  | - Park and Open Space | - See Section 17  |
| BP_ | - Business Park       | - See Section 119 |
- An H symbol preceding the zone symbol represents a hold on the issuance of a building permit until specific development preconditions have been satisfied. Section 4.5 specifies the uses permitted until such time as the H symbol is removed by an amending by-law approved by Council.

REVISIONS			
DATE:	BY-LAW #	REV. BY:	APPROVED BY:
08/11/11	186-2011	SH	AS
25/06/15	79-2015	SH	AS



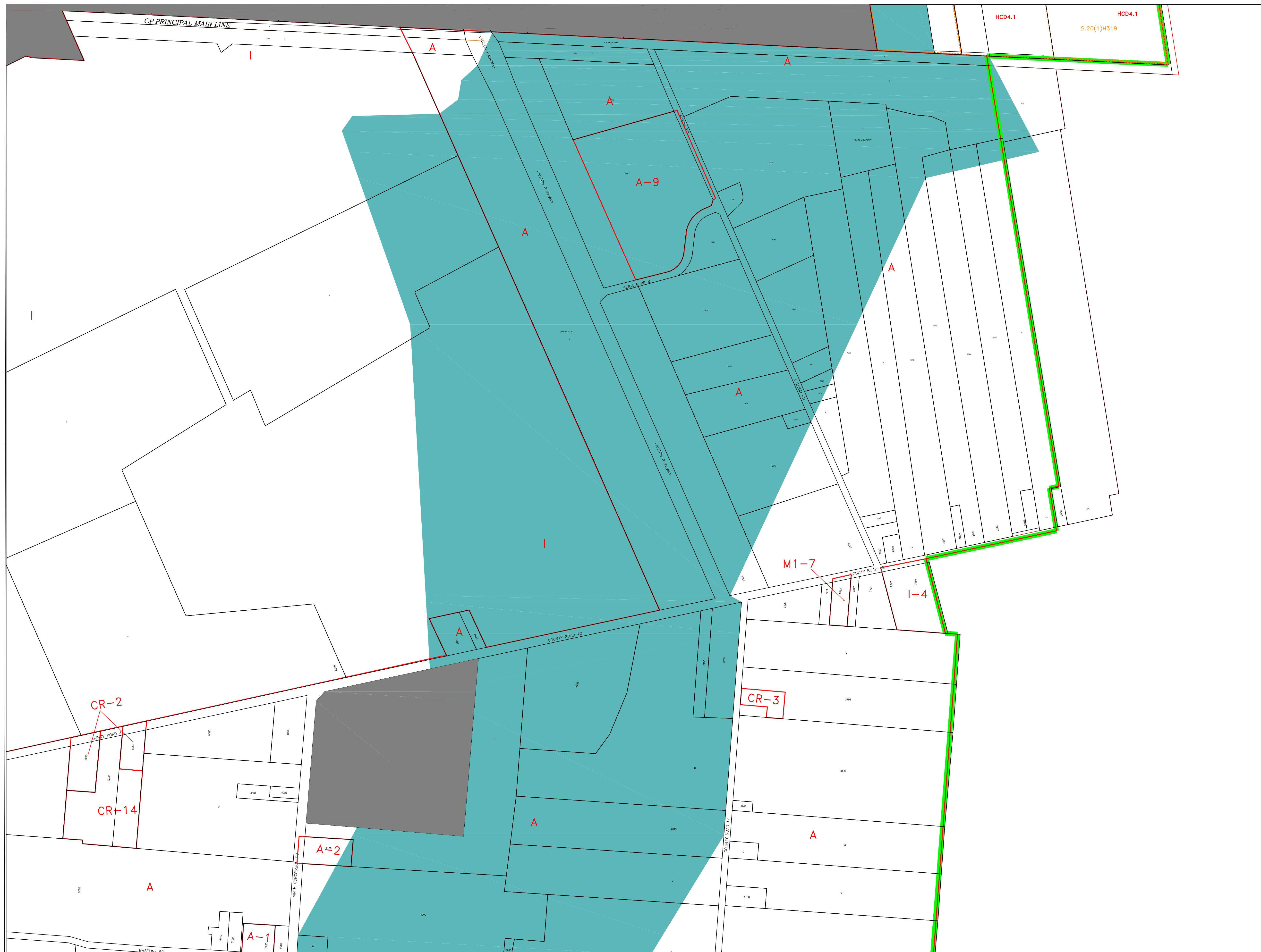
This forms Part of Schedule 'A'.

## Town Of Tecumseh Zoning By-law 85-18

Scale 1:6000

## Zoning Map T15

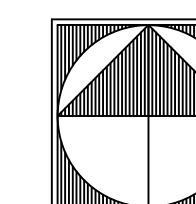
# Zoning Map T16



This forms Part of Schedule 'A'.

## Town Of Tecumseh Zoning By-law 85-18

Scale 1:6000



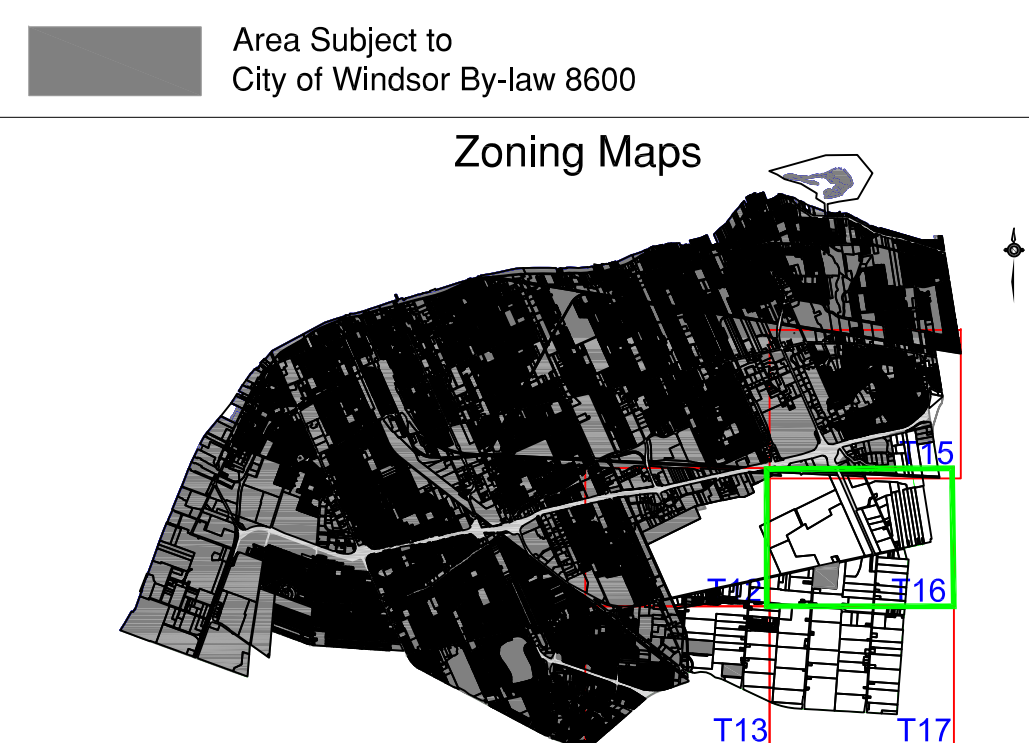
**LEGEND:**

- Zone Boundary<sup>1</sup>
- Specific Temporary Zoning Exemptions
- Registered Plan Parcel Limits
- Ownership Parcel Limits
- Municipal Boundary Line
- Floodplain Development Content / Area (See Subsection 5.40)

- NOTES:**
1. Each Zone symbol corresponds to a zoning district set out in the text of By-law 85-18 (i.e. BP - Business Park)
- |     |                       |                   |
|-----|-----------------------|-------------------|
| R1_ | - Residential Zone 1  | - See Section 6   |
| RH_ | - Hamlet Residential  | - See Section 7   |
| CH_ | - Hamlet Commercial   | - See Section 10  |
| CR_ | - Rural Commercial    | - See Section 11  |
| M1_ | - Industrial Zone     | - See Section 14  |
| A_  | - Agriculture         | - See Section 15  |
| I_  | - Institutional       | - See Section 16  |
| P_  | - Park and Open Space | - See Section 17  |
| BP_ | - Business Park       | - See Section 119 |

An H symbol preceding the zone symbol represents a hold on the issuance of a building permit until specific development preconditions have been satisfied. Section 4.5 specifies the uses permitted until such time as the H symbol is removed by an amending by-law approved by Council.

DATE:	BY-LAW #	REVISIONS		APPROVED BY:
		REV. BY:		
31/08/21	132-2018	DH	AS	



Zoning Map T16

# Zoning Map T17



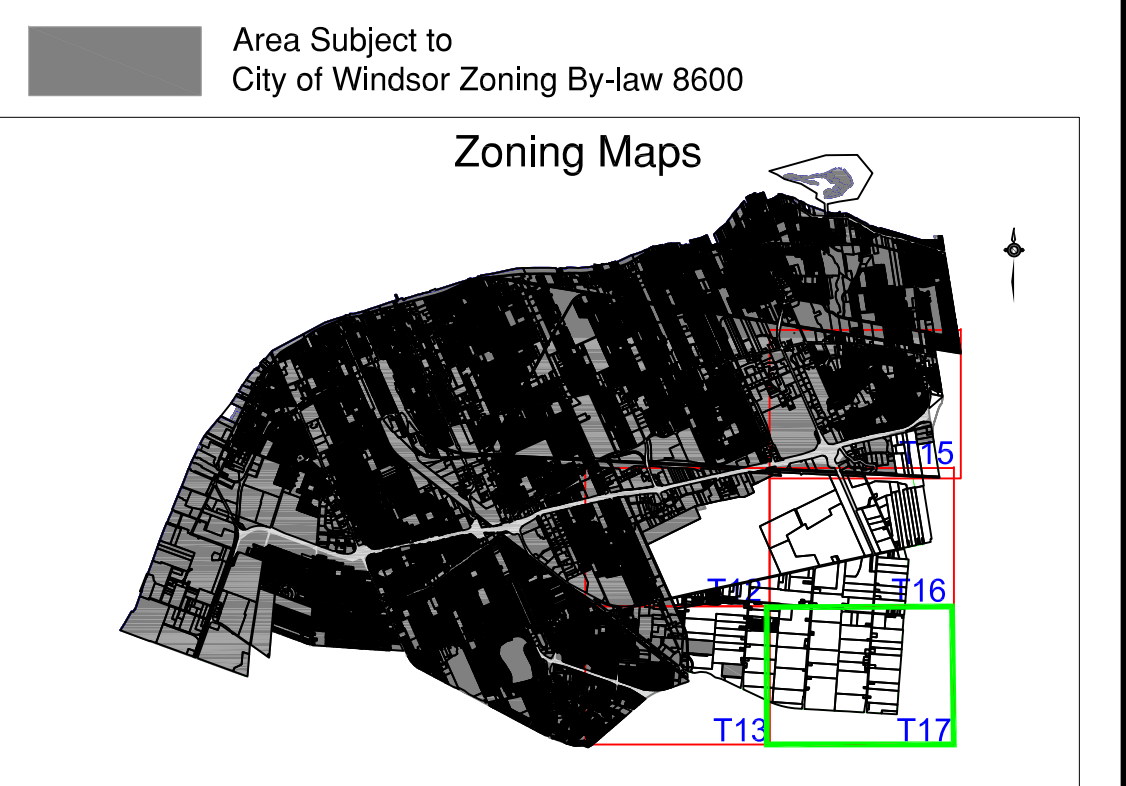
**LEGEND:**

- Zone Boundary<sup>1</sup>
- Specific Temporary Zoning Exemptions
- Registered Plan Parcel Limits
- Ownership Parcel Limits
- Municipal Boundary Line
- Floodplain Development Content / Area (See Subsection 5.40)

- NOTES:**
1. Each Zone symbol corresponds to a zoning district set out in the text of By-law 85-18 (i.e. BP - Business Park)
- |     |                       |                  |
|-----|-----------------------|------------------|
| R1_ | - Residential Zone 1  | - See Section 6  |
| RH_ | - Hamlet Residential  | - See Section 7  |
| CH_ | - Hamlet Commercial   | - See Section 10 |
| CR_ | - Rural Commercial    | - See Section 11 |
| M1_ | - Industrial Zone     | - See Section 14 |
| A_  | - Agriculture         | - See Section 15 |
| I_  | - Institutional       | - See Section 16 |
| P_  | - Park and Open Space | - See Section 17 |
| BP_ | - Business Park       | - See Section 19 |

An H symbol preceding the zone symbol represents a hold on the issuance of a building permit until specific development preconditions have been satisfied. Section 4.5 specifies the uses permitted until such time as the H symbol is removed by an amending by-law approved by Council.

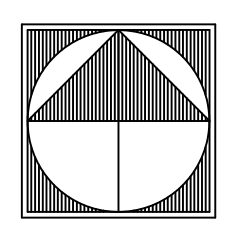
DATE:	REVISIONS		APPROVED BY:
	BY-LAW #	REV. BY:	



This forms Part of Schedule 'A'.

# Town Of Tecumseh Zoning By-law 85-18

Scale 1:6000



# Zoning Map T17