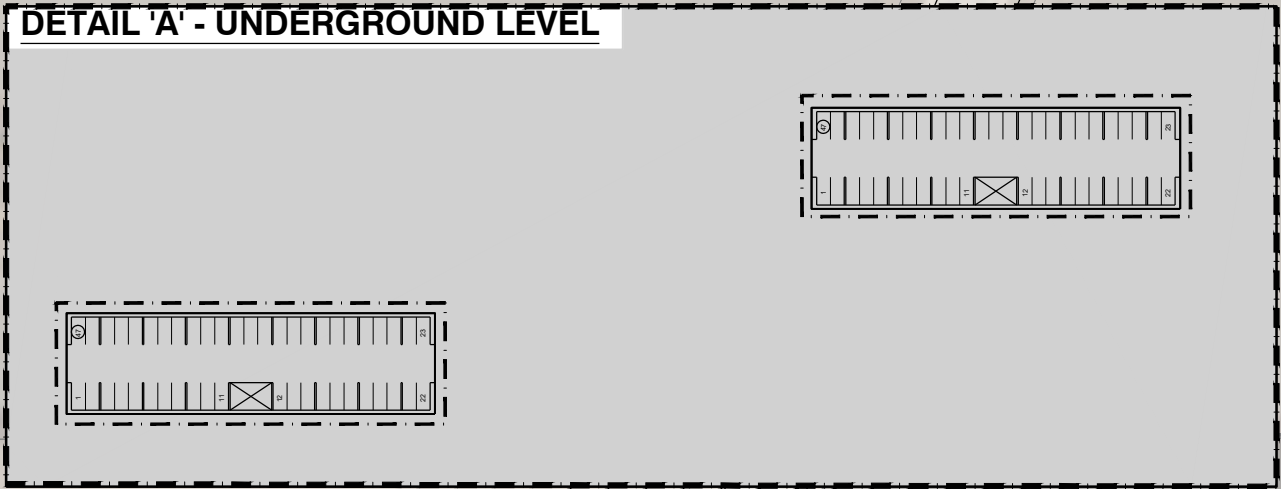
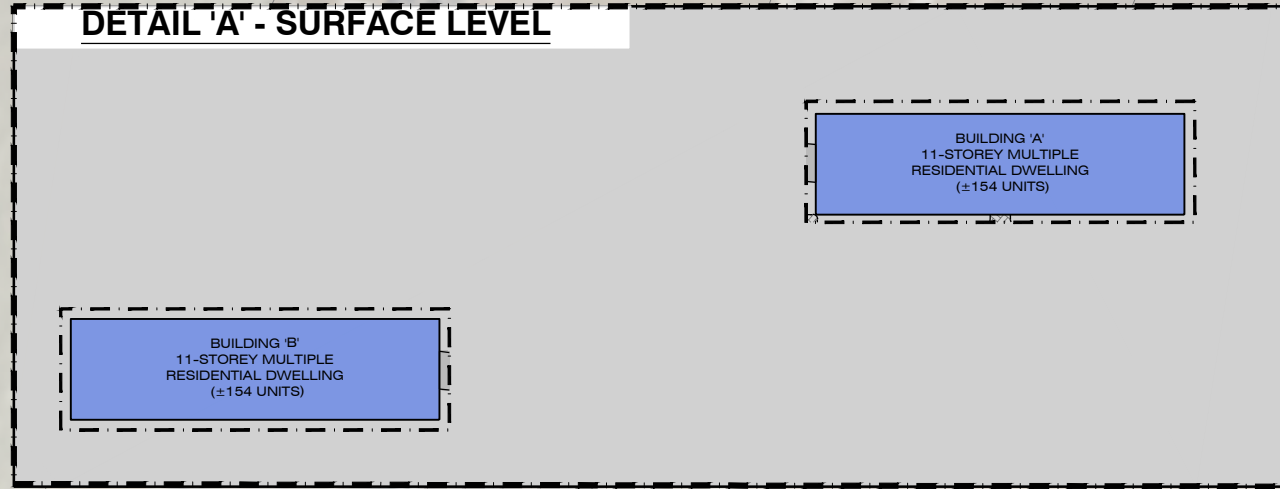
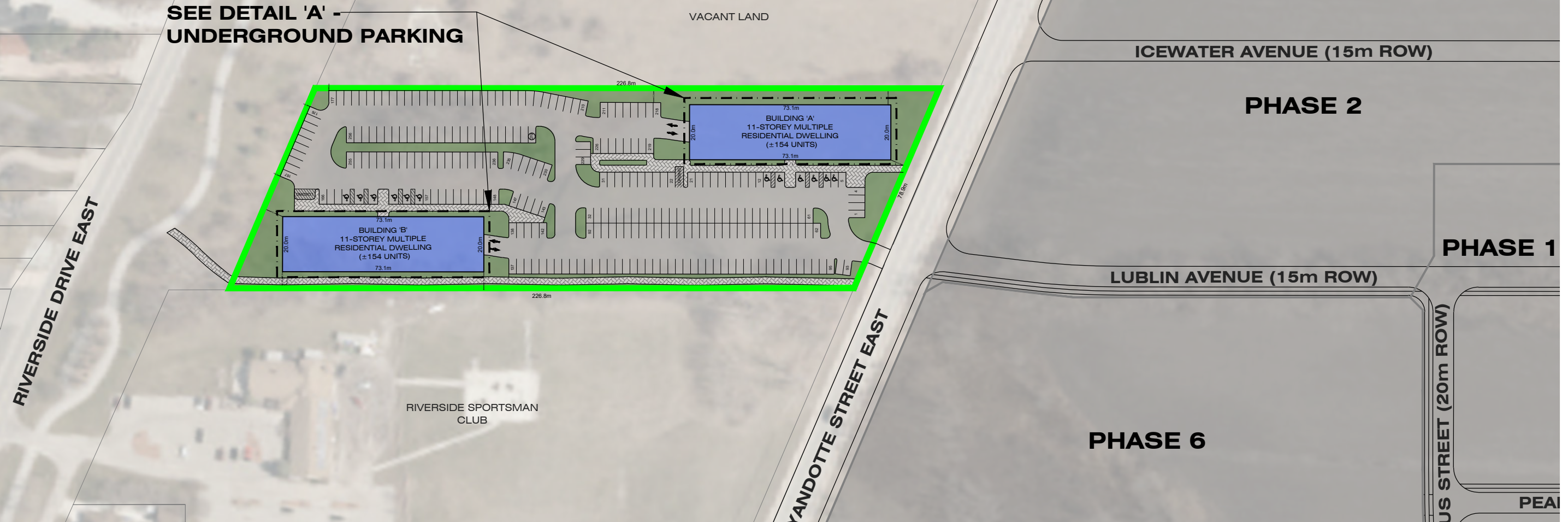


**DETAIL 'A' - SURFACE LEVEL**

**DETAIL 'A' - UNDERGROUND LEVEL**



**SEE DETAIL 'A' - UNDERGROUND PARKING**



**1027458 ONTARIO INC.**  
EAST RIVERSIDE DEVELOPMENT  
NORTH NEIGHBOURHOOD

**PHASE 7 - CONCEPTUAL DEVELOPMENT PLAN**  
FIGURE 1.0

- SUBJECT AREA PHASE 7 (± 1.65ha)
- PROPOSED MULTIPLE DWELLING RESIDENTIAL
- PROPOSED LANDSCAPED AREA
- PROPOSED SIDEWALK
- PROPOSED PAVEMENT

**SITE MATRIX**

FRONT YARD DEPTH	- 6.0m
BACK YARD DEPTH	- 7.5m
SIDE YARD DEPTH	- 6.0m
UNIT COUNT	- 308 units
PROPOSED PARKING	- 373 spaces
PROPOSED PARKING RATIO:	1.21
REQUIRED PARKING RATIO:	1.25

File Location:  
c:\pw working directory\projects 2022\dillon\_32mru\dms48937\22-4866 - north neighbourhood - phase 7 - concept plan.dwg  
January, 20, 2023 1:08 PM

SOURCE: COUNTY OF ESSEX AERIAL (2021)

MAP/DRAWING INFORMATION  
THIS DRAWING IS FOR INFORMATION PURPOSES ONLY. ALL DIMENSIONS AND BOUNDARY INFORMATION SHOULD BE VERIFIED BY AN O.L.S PRIOR TO CONSTRUCTION.  
CREATED BY: MRU  
CHECKED BY: KDT  
DESIGNED BY: MRU

SCALE: 1:1500 (11x17)



PROJECT: 22-4866  
STATUS: DRAFT  
DATE: 01/20/2023