

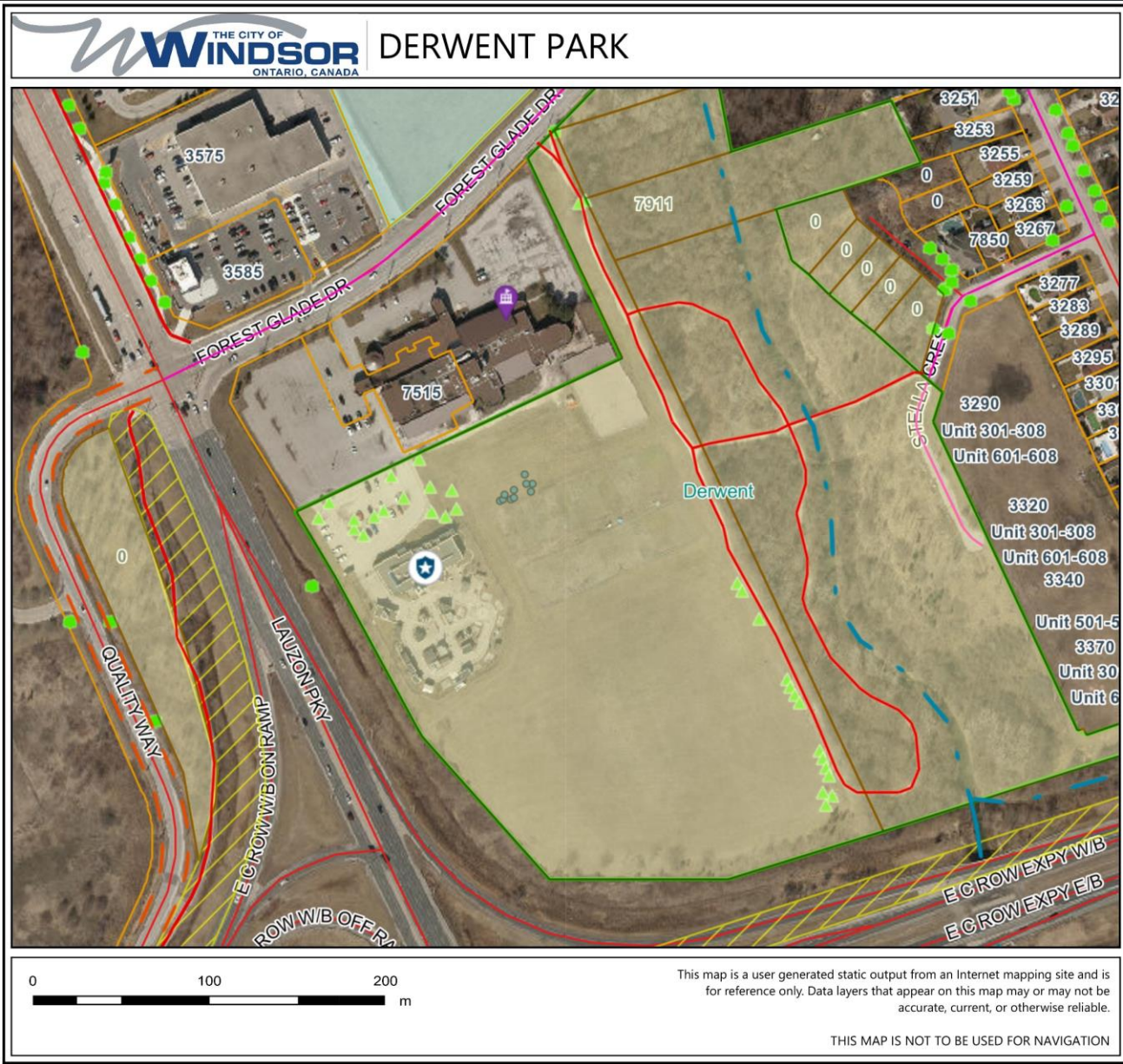
# DERWENT PARK – LANDSCAPE MASTER PLAN

February 2024

The City of Windsor is reviewing plans to re-develop Derwent Park and make it more welcoming to all residents. Public feedback on the draft concept plan has been collected and is being reviewed.

**Park Name:** Derwent Park  
**Location:** Between Forest Glade Dr. and Lauzon PKY.  
**Address:** 7911 FOREST GLADE DRIVE  
**Acreage:** 15.31 acres  
**Official designation:** Community Park as Part of the Regional Open space System  
**Electoral Ward:** 8

**Project Background**  
Derwent Park is an 15.31-acre open green space located on the lower right corner of Ward 8. This community park has remained an open green space for the last decade without real active or passive actions, except for an old and currently unused community garden. This open space requires further development to be at the high standard of a community park, meant to serve City residents all year round with various outdoor activities such as cricket pitch teams.

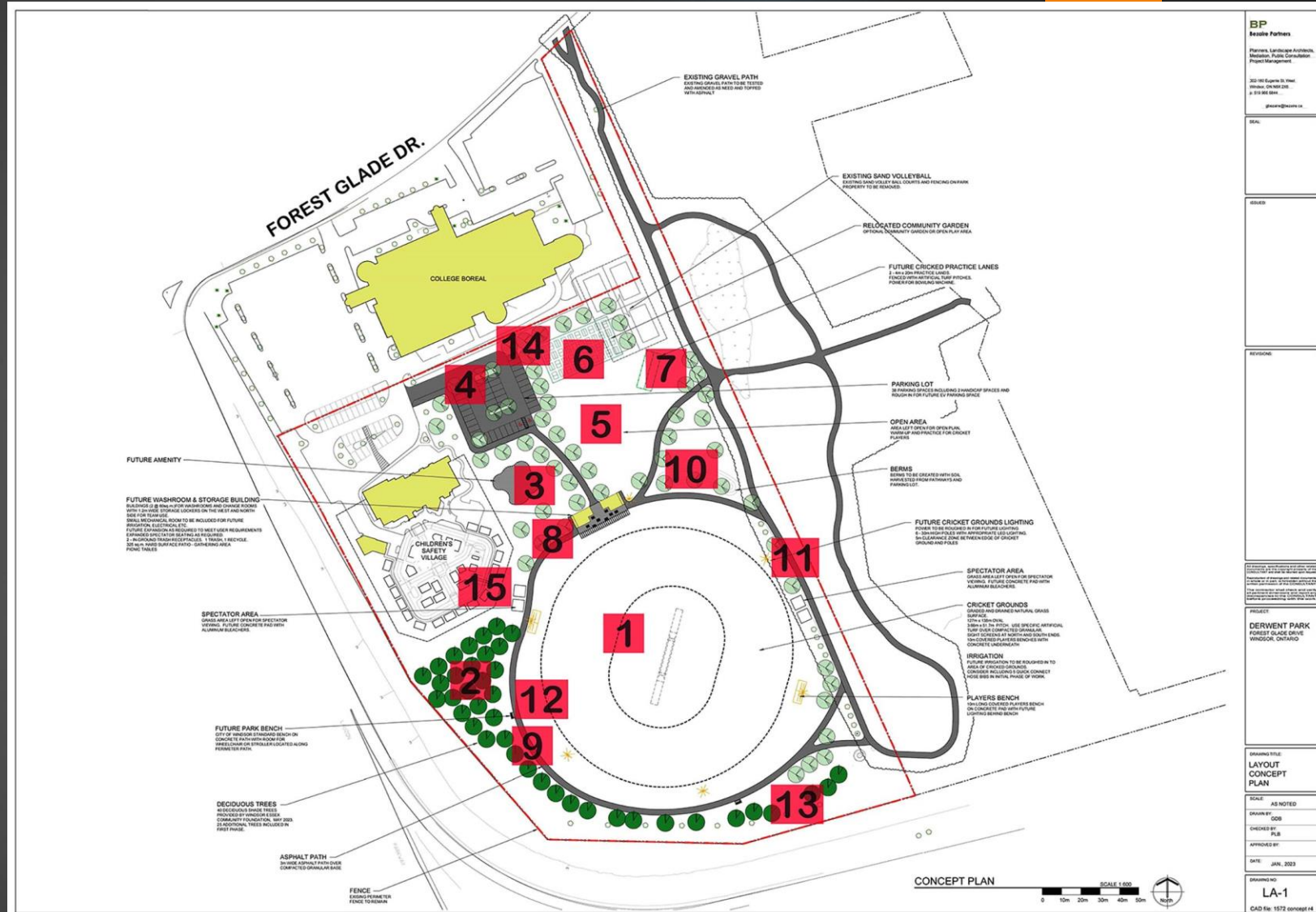


# DERWENT PARK – NEW CONCEPT MASTER PLAN

## Project Design Study Background:

Bezaire Partners (BP) and Landmark were appointed to prepare the Derwent Park full site study, including conceptual designs for current and future needs. The Project Team coordinated with the cricket pitch teams/groups in Windsor and created a draft layout concept plan that includes the following:

- (1) FULL SIZE CRICKET GROUND
- (2) PLANTED 40 DECIDUOUS TREES
- (3) FUTURE AMENITY
- (4) PARKING LOT WITH 38 SPACES INCLUDING 2 HANDICAP SPACES
- (5) OPEN AREA LEFT FOR WARM-UP AND PRACTICE FOR PLAYERS
- (6) RELOCATED/OPTIONAL COMMUNITY GARDEN OR OPEN PLAY AREA
- (7) FUTURE CRICKED PRACTICE LANES
- (8) FUTURE WASHROOM & STORAGE BUILDING & HARD SURFACE PATIO - GATHERING AREA WITH PICNIC TABLES
- (9) NEW ASPHALT TRAIL 3.0m WIDTH CONNECTED WITH EXISTING ONE
- (10) SOFTSCAPE BERMS
- (11) FUTURE CRICKET GROUNDS LIGHTING
- (12) FUTURE PARK BENCHES
- (13) EXISTING TREES
- (14) NEW LARGE SHADE TREES
- (15) SPECTATOR AREA FOR FUTURE ALUMINUM BLEACHERS



### LEGEND:

- |                                     |   |  |   |  |
|-------------------------------------|---|--|---|--|
| <b>1</b> FULL SIZE CRICKET GROUND   | <b>4</b> PARKING LOT WITH 38 SPACES INCLUDING 2 HANDICAP SPACES | <b>7</b> FUTURE CRICKED PRACTICE LANES   | <b>10</b> SOFTSCAPE BERMS                 | <b>13</b> EXISTING TREES                               |
| <b>2</b> PLANTED 40 DECIDUOUS TREES | <b>5</b> OPEN AREA LEFT FOR WARM-UP AND PRACTICE FOR PLAYERS    | <b>8</b> FUTURE WASHROOM & STORAGE BUILDING & HARD SURFACE PATIO - GATHERING AREA WITH PICNIC TABLES | <b>11</b> FUTURE CRICKET GROUNDS LIGHTING | <b>14</b> NEW LARGE SHADE TREES                        |
| <b>3</b> FUTURE AMENITY             | <b>6</b> RELOCATED/OPTIONAL COMMUNITY GARDEN OR OPEN PLAY AREA  | <b>9</b> NEW ASPHALT TRAIL CONNECTED WITH EXISTING ONE 3.0m WIDE                                     | <b>12</b> FUTURE PARK BENCHES             | <b>15</b> SPECTATOR AREA FOR FUTURE ALUMINUM BLEACHERS |

**BP**  
Bezaire Partners

Planning, Landscape Architecture, Recreation, Public Consultation, Project Management

300-100 Spadina St. West  
Windsor, ON N6A 1S1  
416-291-8888  
www.bezaire.com

SCALE: AS NOTED

DRAWN BY: GDS

CHECKED BY: PLB

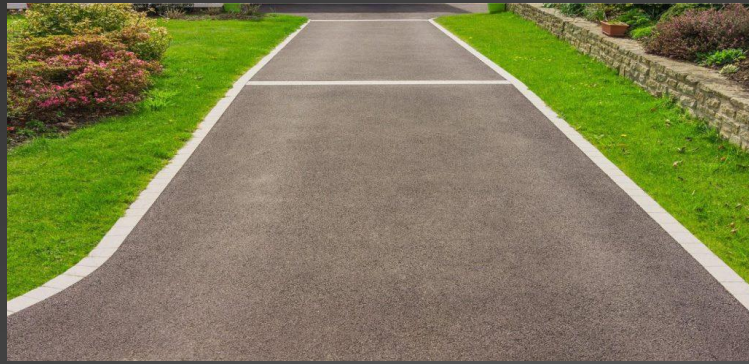
APPROVED BY:

DATE: JUN, 2023

PROJECT NO: LA-1

CAD FILE: 1572 concept 14

# MULTIUSE ACCESSIBLE ASPHALT TRAIL, 3.0m WIDTH



## EXAMPLES

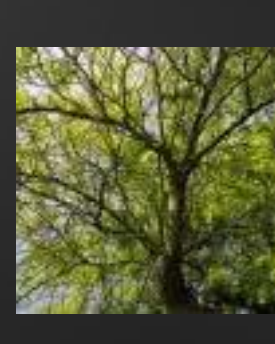
# GATHERING AREA WITH SHADE SAIL STRUCTURE



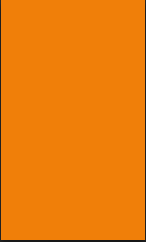
# NEW WASHROOM AND CHANGING ROOMS BUILDINGS



# NEW LARGE SHADE TREES



NEW BENCHES



EXAMPLES

CRICKET PITCH, PEDESTRIAN SOLAR LED LIGHTS AND CRICKET GROUNDS LIGHTS



## SILOS GARBAGE CONTAINERS (BLUE-GREEN)



## BLEACHERS



## EXAMPLES

## PICNIC TABLES



## COMMUNITY GARDEN





# THANK YOU

For further information, please contact:  
Parks Development  
2450 McDougall Street  
Windsor, Ontario, Canada  
Phone: For general information, call 311.  
For detailed inquiries, call (519) 253-2300.  
Email: [parkrec@citywindsor.ca](mailto:parkrec@citywindsor.ca)