

Little River Dike Improvement Project

OPEN HOUSE

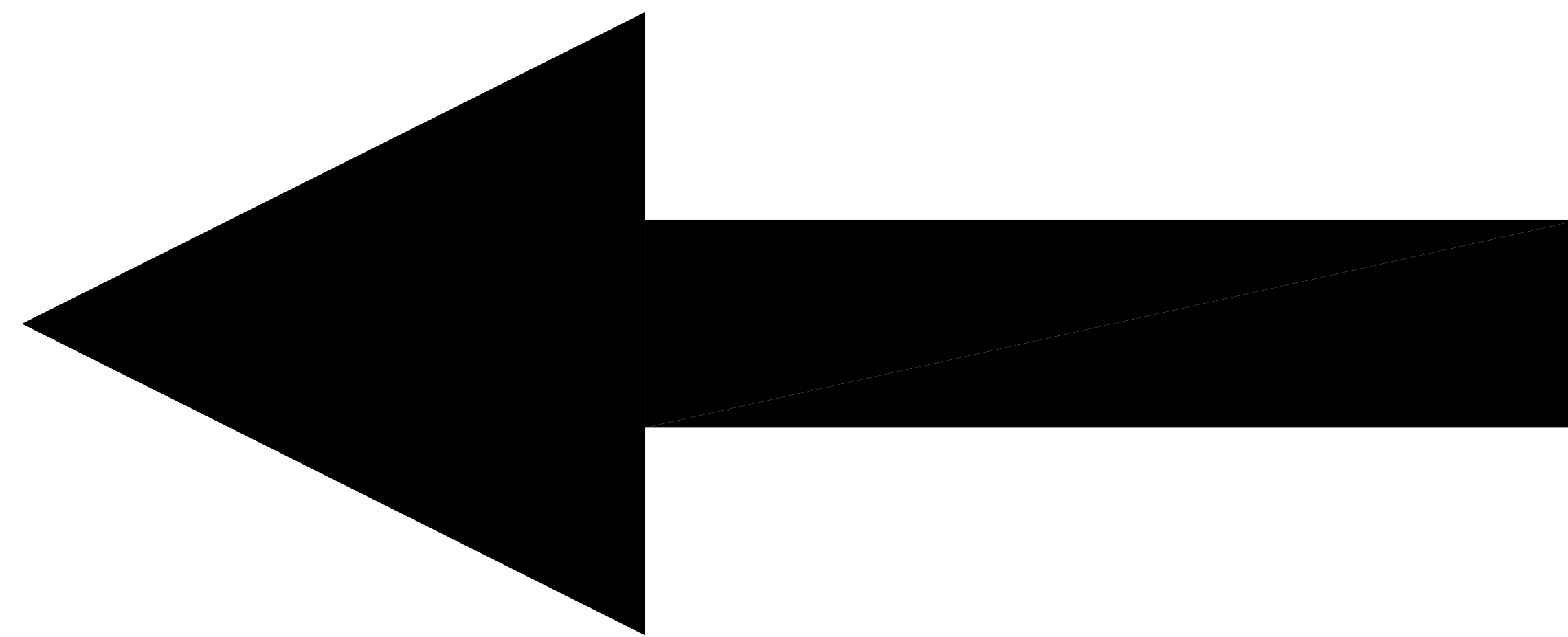
COLLAVINO HALL



Little River Dike Improvement Project

OPEN HOUSE

Collavino Hall



WELCOME

Little River Dike Improvement Project OPEN HOUSE

Date: July 13, 2017

Please sign in



Little River Dike Improvement Project

Existing Condition of the Dike

- The purpose of the dike, along with the steel retaining wall, is to contain elevated floodwater during high volume flows.
- Over time, the dike has been altered and modified rendering it ineffective for the flood control purposes.

Purpose of Project

- The purpose of this project is to assess and survey the current condition of the dike and make the necessary improvements to restore it to proper working order.
- This project will be conducted under the provisions of City of Windsor By-law 7635 and Sections 12, 63, and 80 of the Ontario Drainage Act.



Little River Dike Improvement Project

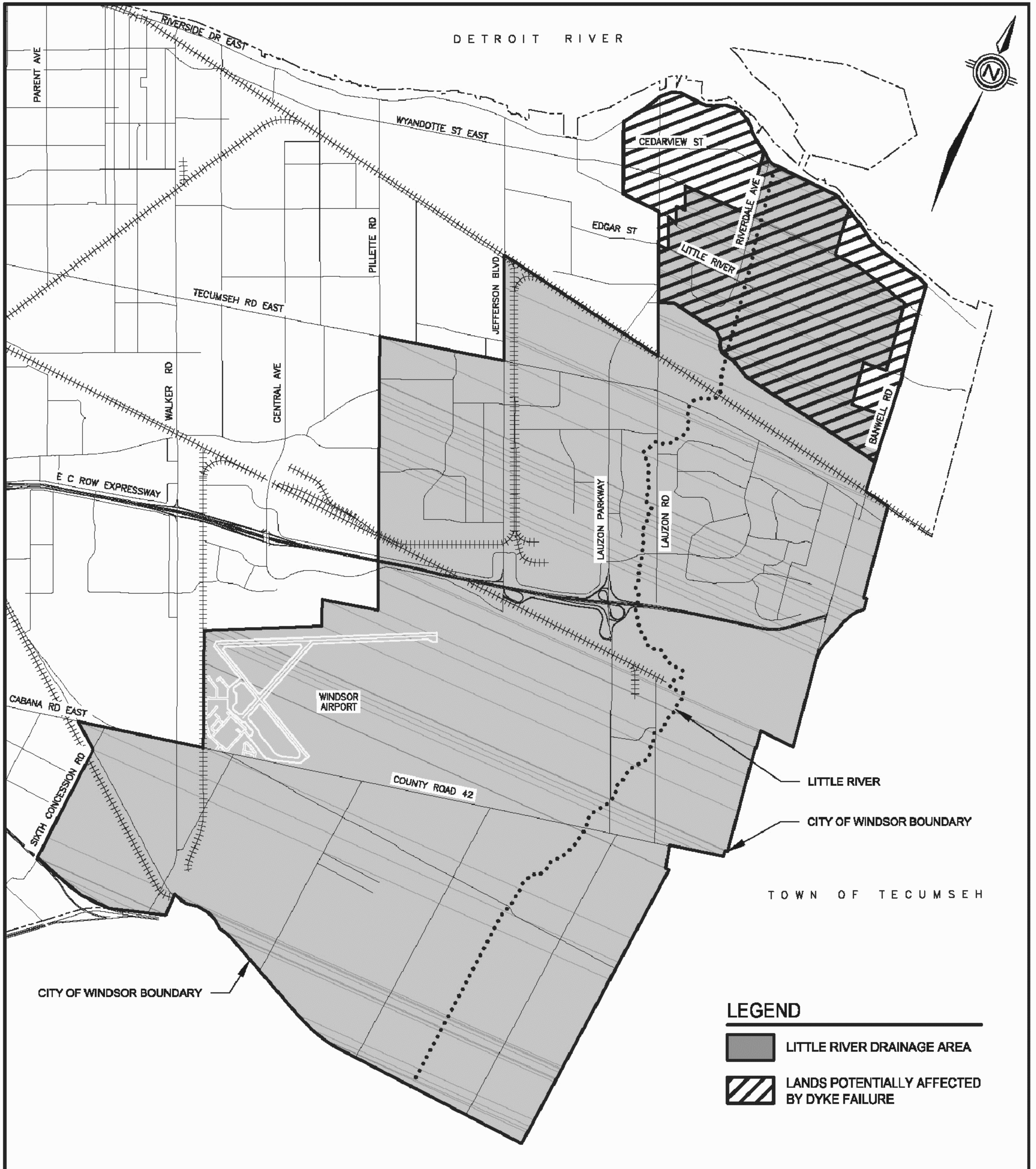
Little River Background

- Little River provides the storm water outlet for approximately 6500 hectares of land.
- In 1983 a drainage report was completed that identified repairs and improvements to Little River. The drainage report was adopted by the City of Windsor under by-law 7635.
- Between 1982 and 1986 a series of steel sheet piling retaining walls with earth dikes were constructed along the east and west banks of the river from Riverside Drive bridge to the McHugh Street bridge.
- The retaining walls and dike were constructed under the Ontario Drainage Act to provide flood and erosion protection.
- In 2014 repairs to approximately 120m of the steel sheet wall were completed.



Little River Dike Improvement Project

Little River Drainage Area



Little River Dike Improvement Project

Frequently Asked Questions

Q. What is the purpose of the dike?

The purpose of the dike, along with the steel retaining wall, is to contain elevated floodwater during high volume flows. The dike prevents flooding of adjacent properties. The steel retaining wall stabilizes the bank and minimizes/eliminates erosion.

Q. Where along the Little River Dike is the area of concern?

The area of concern runs length wise from approximately the McHugh Street bridge to Riverside Drive and width wise from the east toe of the dike on the east side of the river to the west toe of the dike on the west side of the river.

Q. Why aren't structures (such as decks, boat docks, sheds, and fencing, etc.) allowed in this area?

Structures (such as decks, boat docks, sheds, and fencing, etc.) can impede the flow of the river during high volume flows. Under the Ontario Drainage Act, obstructions to the free flow of water are required to be removed.

Q. What is allowed within the dike area?

Only fencing is permitted down to the top of the steel retaining walls, provided such fencing is of an open mesh type, which permits water to flow through it without impeding flow.

Q. Under what authority would the City be undertaking this project?

The original drainage report, completed in 1983, contains a provision that the dike and steel wall be kept up and maintained in a good state of repair. The report was adopted under City of Windsor By-law 7635. In addition, the Ontario Drainage Act also contains provisions regarding upkeep and maintenance of municipal drains.

Q. Will the City be required to enter onto my land?

Yes. There are provisions in the Ontario Drainage Act that allow for assessment and repairs. Section 12(1) of the Ontario Drainage Act provides authority to the municipality to enter onto lands of any person in order to assess or survey. Section 63(1) gives authority for work to be undertaken to repair the drain. This work may only take place within a certain working space.

Q. If items are removed, what would be done with those items?

Property owners could keep any items if they choose to. Any items that are not wanted will be hauled away.

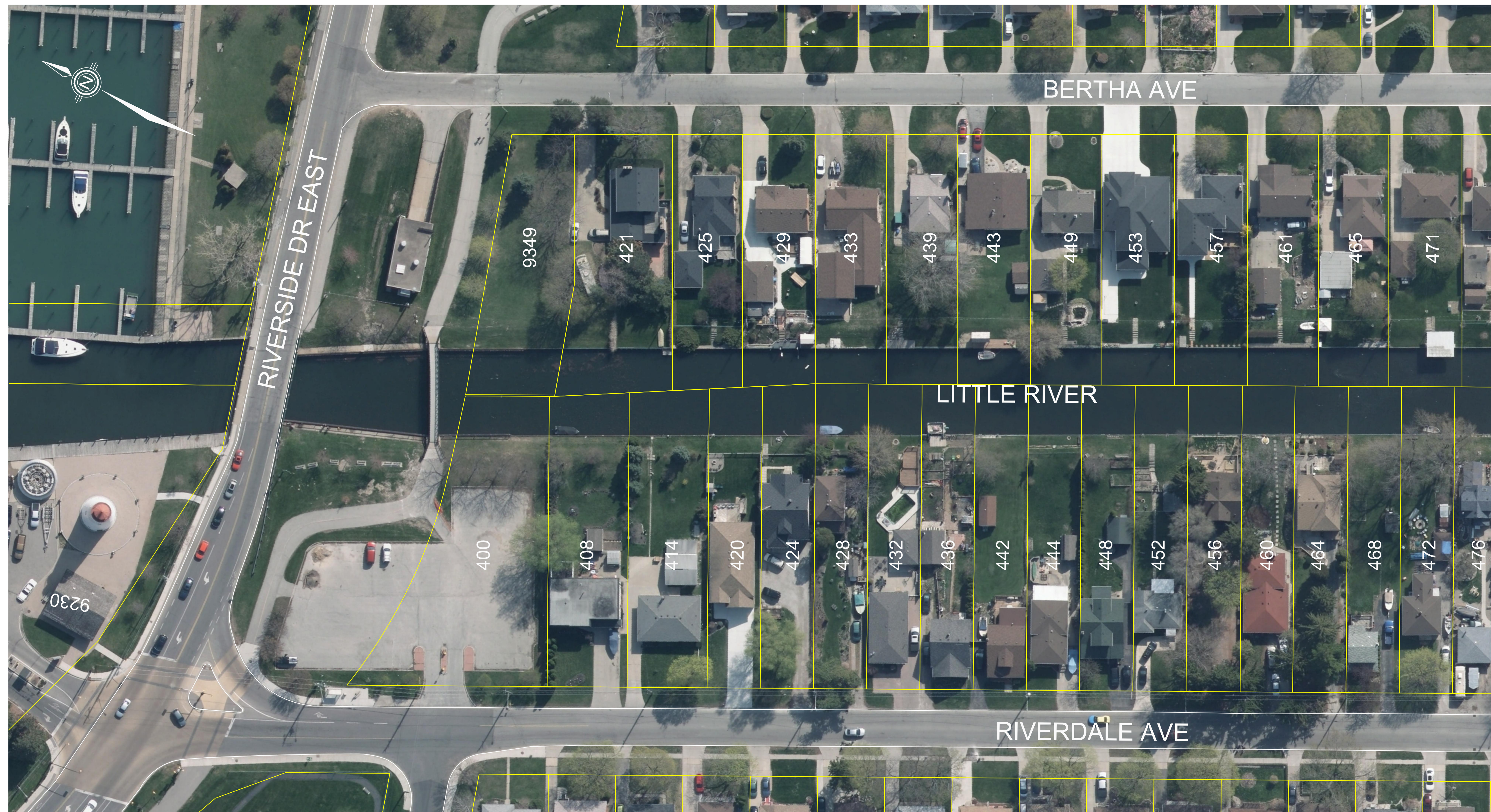
Q. Why are the obstructions a concern now?

It is a growing concern considering water levels have increased over the years and the occurrence of flooding events has become more frequent.

Q. Water levels have never reached flood levels. Is there really a need to repair the Dike?

Regardless of water levels, alterations and removals of sections of the dike by property owners have occurred causing deficiencies in the dike. Improvements/repairs will be made to restore the dike to the level of flood protection it was originally designed

Little River Dike Improvement Project



Aerial Photo

Scale 1:500

Little River Dike Improvement Project



Aerial Photo

Scale 1:500

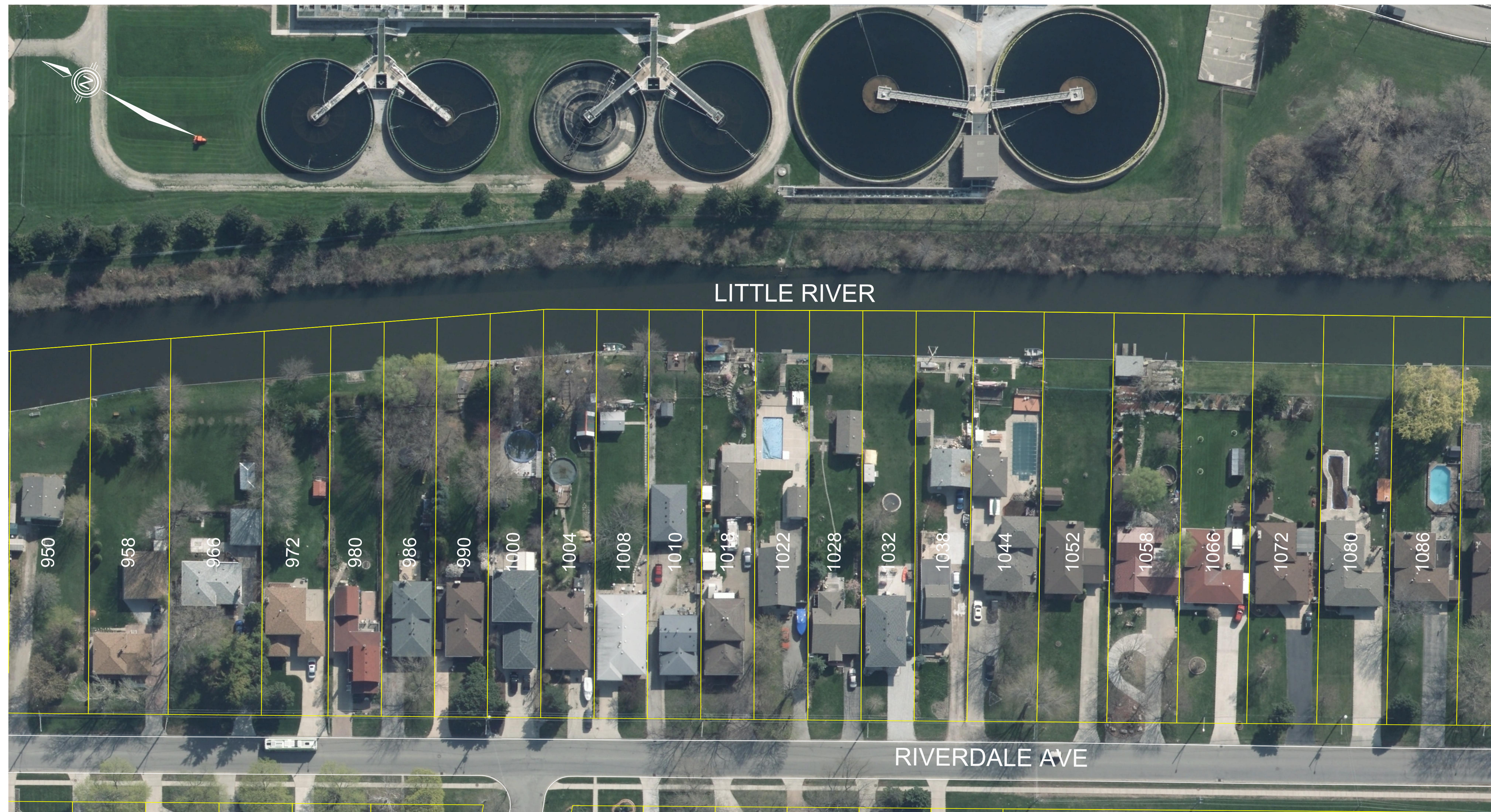
Little River Dike Improvement Project



Aerial Photo

Scale 1:500

Little River Dike Improvement Project



Aerial Photo

Scale 1:500

Little River Dike Improvement Project



Aerial Photo

Scale 1:500

Little River Dike Improvement Project



Aerial Photo

Scale 1:500

**THANK YOU FOR
ATTENDING**

**Little River Dike Improvement Project
OPEN HOUSE**

Date: July 13, 2017

