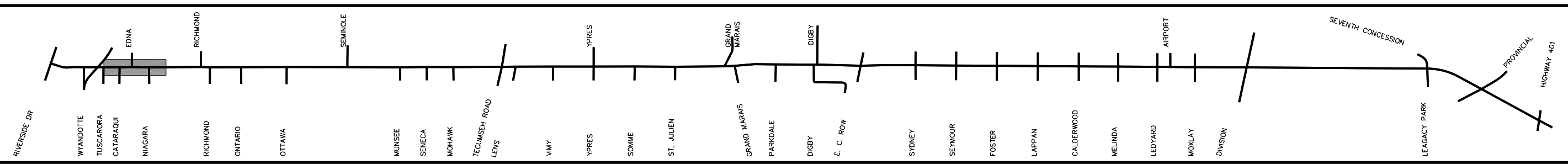
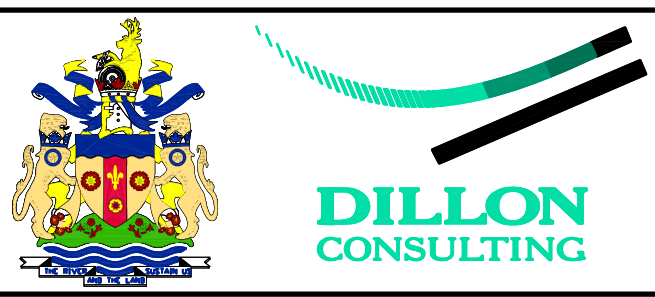
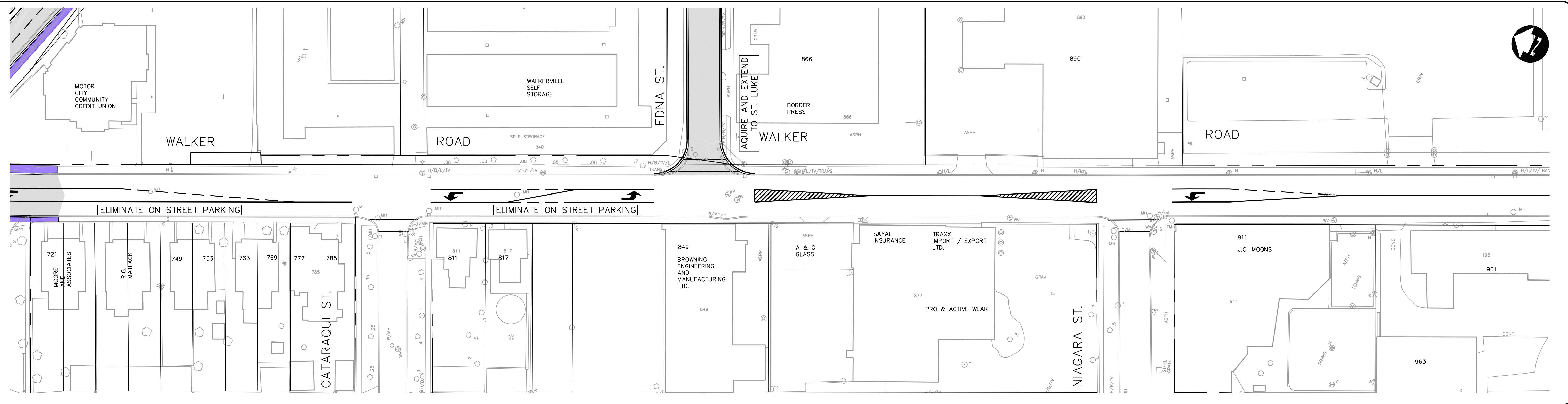


VIEW: SH4
G:\CAD\996401\6401rdrn.dwg 26/07/01 12:29:57 PM EDT



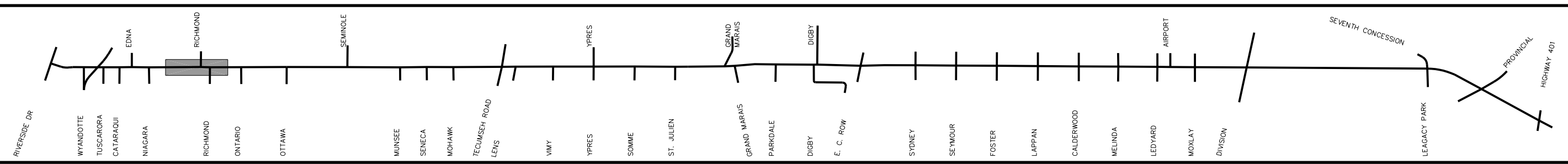
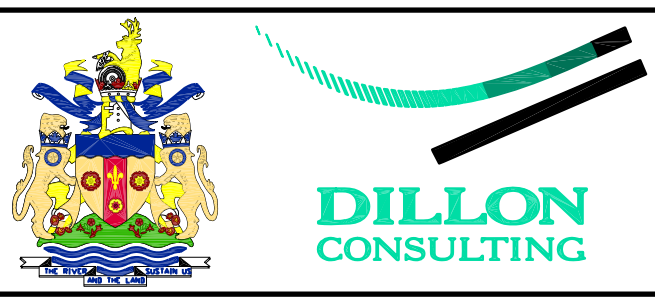
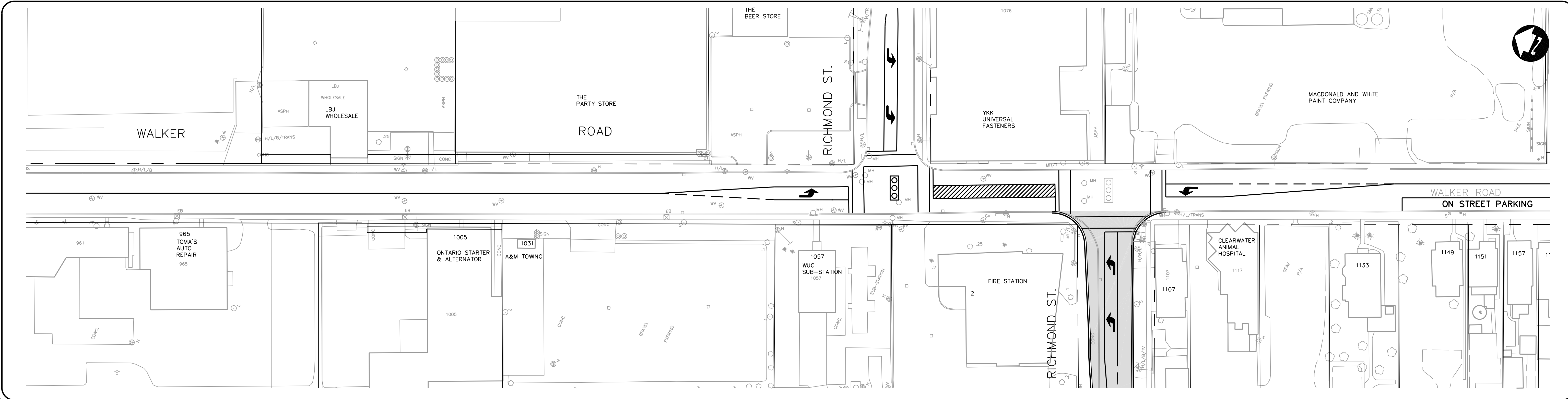
- LEGEND**
- NEW SIDEWALKS
 - NEW PAVEMENT
 - EASEMENT
 - PROPERTY ACQUISITION
 - CONCEPTUAL DRIVEWAY LOCATION

- ROAD CLOSURE (DETAILS TO BE DETERMINED)
- EXISTING TRAFFIC SIGNAL
- NEW TRAFFIC SIGNAL

SCALE: 1500 MARCH, 2001 **FIGURE 4**

**WALKER ROAD CORRIDOR
GRAND MARAIS ROAD EAST IMPROVEMENTS
ENVIRONMENTAL STUDY REPORT
PREFERRED DESIGN**

VIEW: SH15
G:\CAD\996401\6401rdrn.dwg 26/07/01 12:29:57 PM EDT



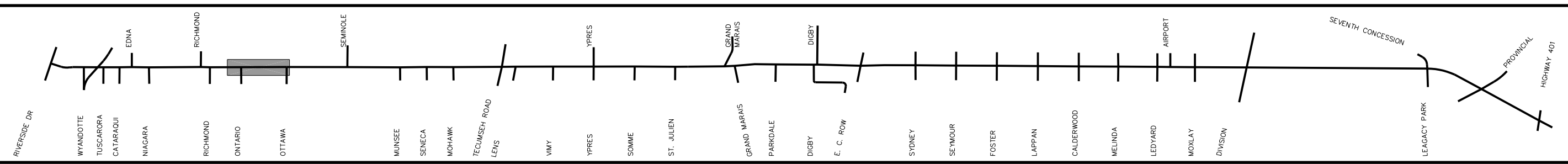
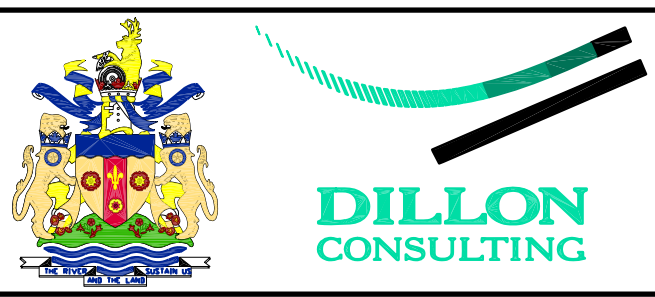
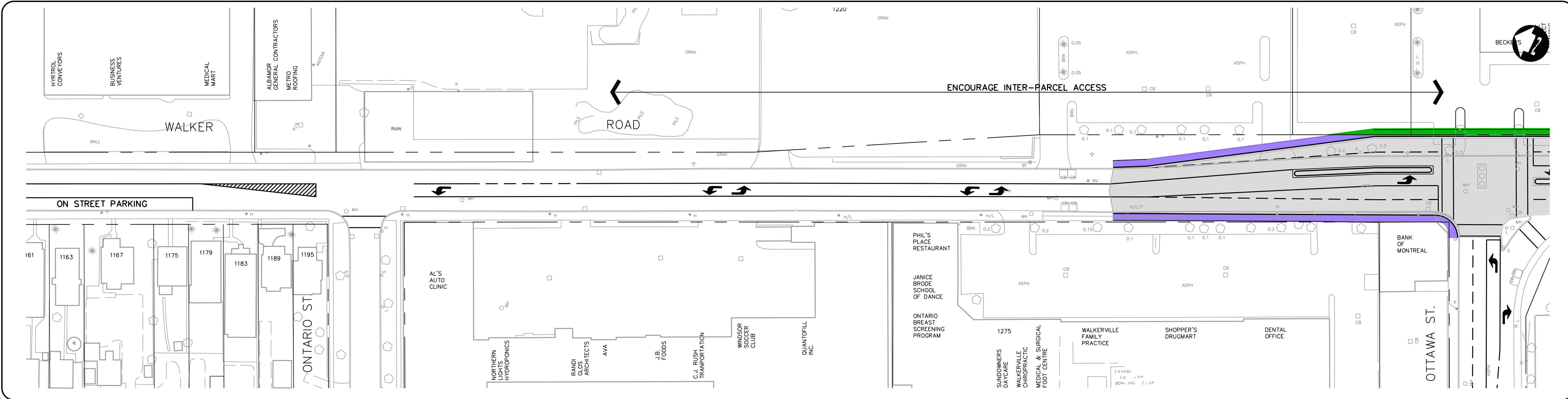
- NEW SIDEWALKS
- NEW PAVEMENT
- EASEMENT
- PROPERTY ACQUISITION
- CONCEPTUAL DRIVEWAY LOCATION

- LEGEND**
- ROAD CLOSURE (DETAILS TO BE DETERMINED)
 - EXISTING TRAFFIC SIGNAL
 - NEW TRAFFIC SIGNAL

SCALE: 1500
MARCH, 2001
FIGURE 5

**WALKER ROAD CORRIDOR
GRAND MARAIS ROAD EAST IMPROVEMENTS
ENVIRONMENTAL STUDY REPORT
PREFERRED DESIGN**

VIEW: SH16
 G:\CAD\096401\6401rdrn.dwg 26/07/01 12:29:57 PM EDT



LEGEND

	NEW SIDEWALKS
	NEW PAVEMENT
	EASEMENT
	PROPERTY ACQUISITION
	CONCEPTUAL DRIVEWAY LOCATION

	ROAD CLOSURE (DETAILS TO BE DETERMINED)
	EXISTING TRAFFIC SIGNAL
	NEW TRAFFIC SIGNAL

**WALKER ROAD CORRIDOR
 GRAND MARAIS ROAD EAST IMPROVEMENTS
 ENVIRONMENTAL STUDY REPORT
 PREFERRED DESIGN**

SCALE: 1500 MARCH, 2001 **FIGURE 6**