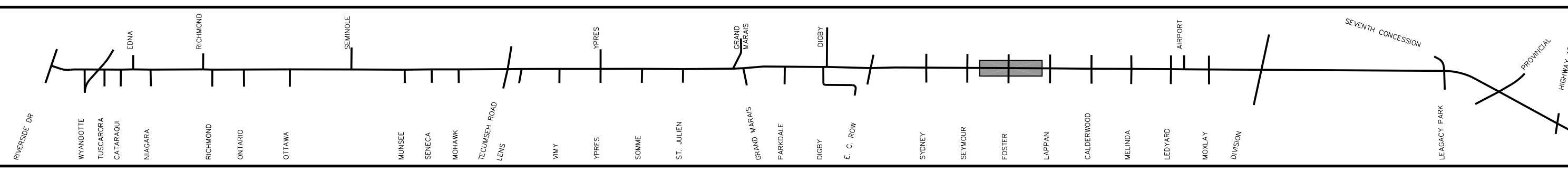
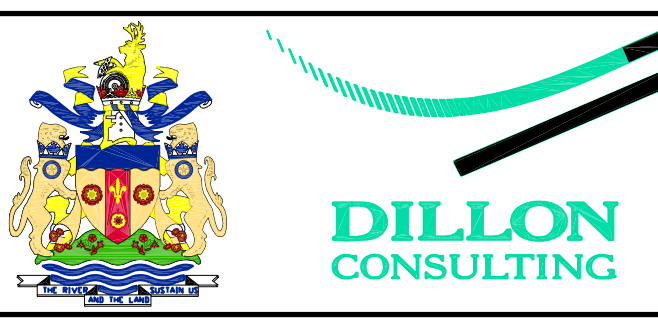
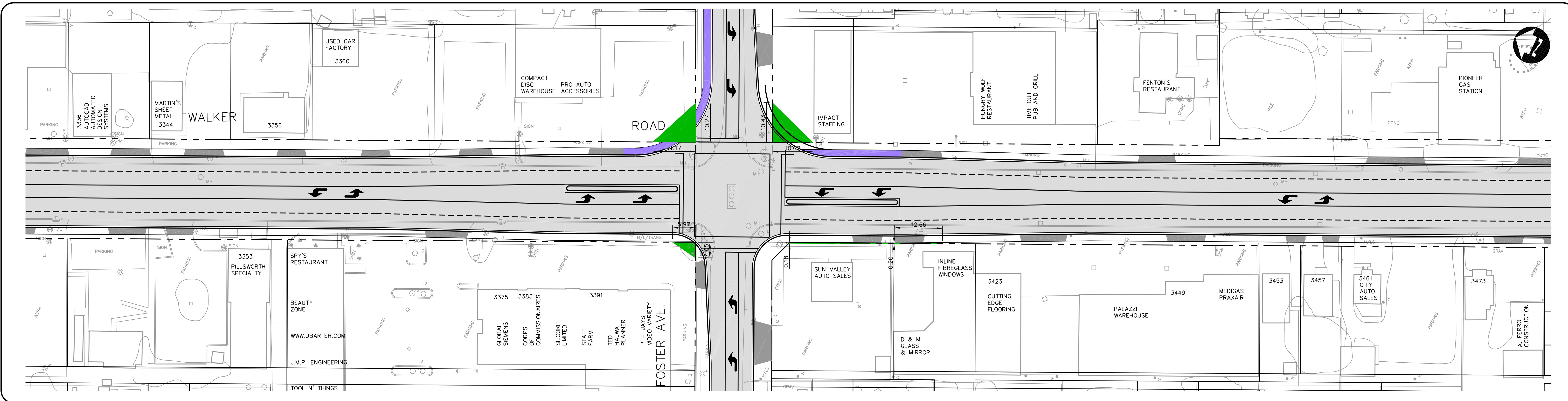


VIEW: SHP1
 G:\CAD\Projects\64015_001\DWG 03/14/2002 08:06:56 AM EST



LEGEND

- NEW SIDEWALKS
- NEW PAVEMENT
- EASEMENT
- PROPERTY ACQUISITION
- CONCEPTUAL DRIVEWAY LOCATION
- ROAD CLOSURE (DETAILS TO BE DETERMINED)
- EXISTING TRAFFIC SIGNAL
- NEW TRAFFIC SIGNAL

WALKER ROAD CORRIDOR
GRAND MARAIS ROAD EAST IMPROVEMENTS
ENVIRONMENTAL STUDY REPORT
PREFERRED DESIGN

SCALE: 1:500 MARCH, 2001 **FIGURE 21**