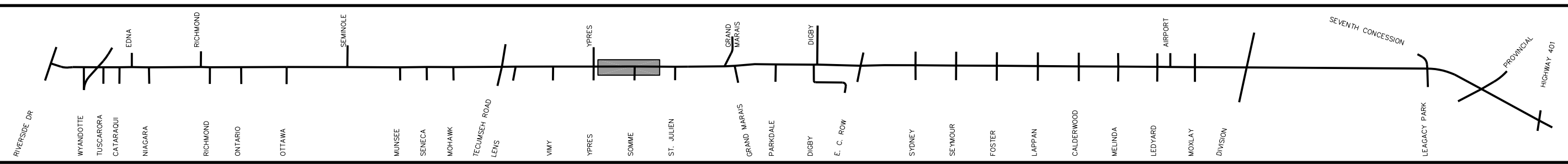
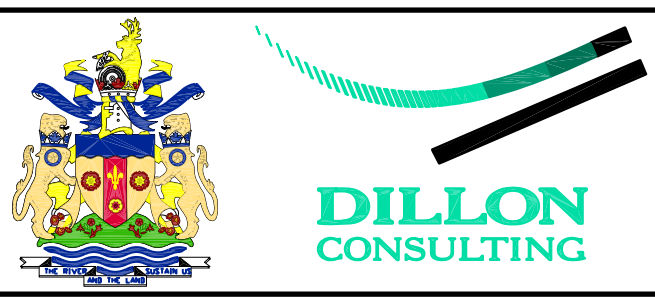
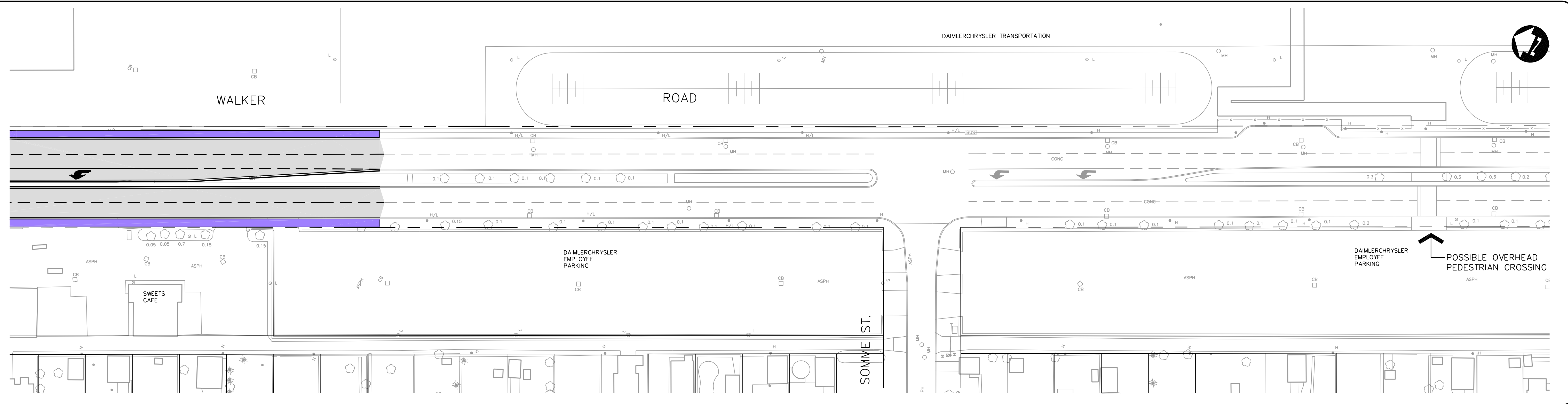


VIEW: SH13
 G:\CAD\996401\k401cen.dwg 03/22/2002 10:12:01 AM EST



- NEW SIDEWALKS
- NEW PAVEMENT
- EASEMENT
- PROPERTY ACQUISITION
- CONCEPTUAL DRIVEWAY LOCATION

- LEGEND**
- ROAD CLOSURE (DETAILS TO BE DETERMINED)
 - EXISTING TRAFFIC SIGNAL
 - NEW TRAFFIC SIGNAL

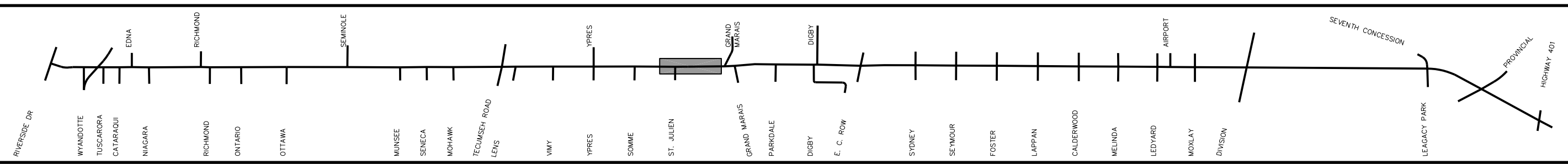
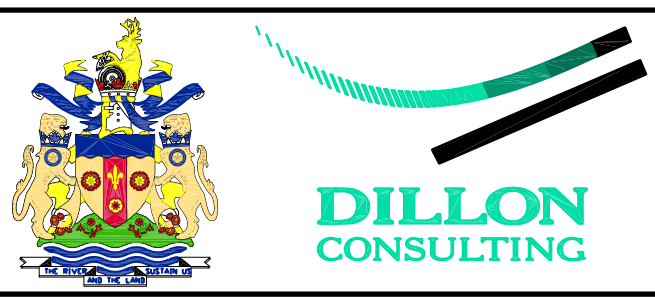
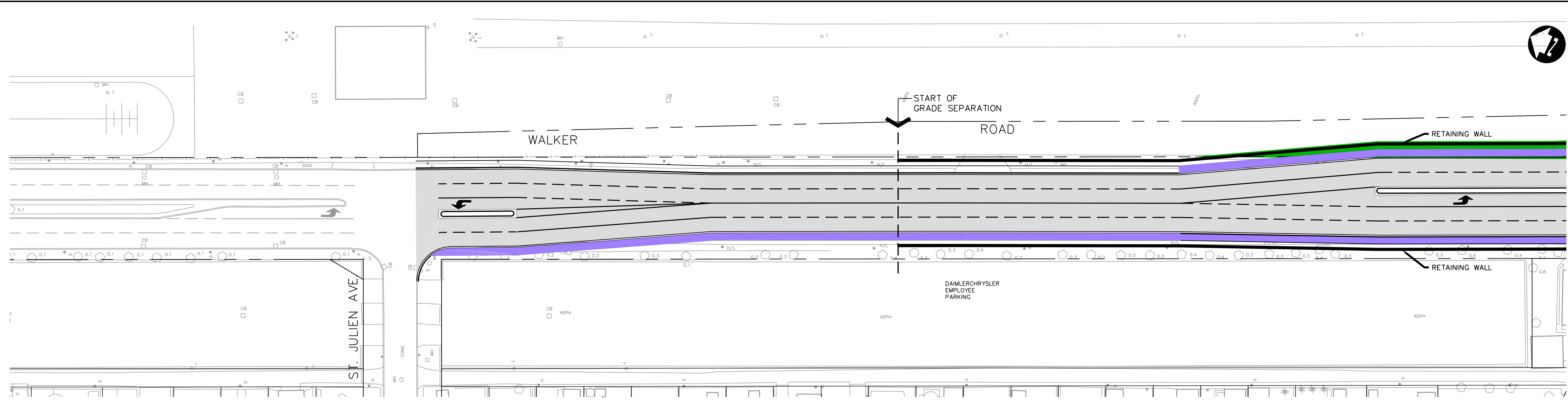
SCALE: 1500

MARCH, 2001

FIGURE 13

**WALKER ROAD CORRIDOR
 GRAND MARAIS ROAD EAST IMPROVEMENTS
 ENVIRONMENTAL STUDY REPORT
 PREFERRED DESIGN**

VIEW: SH14
G:\CAD\996401\6401csm.dwg 03/22/2002 10:12:01 AM EST



LEGEND

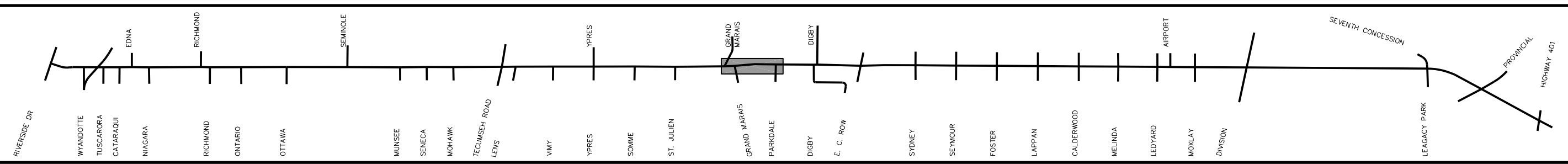
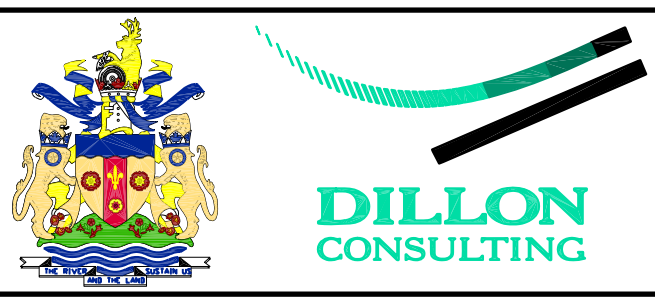
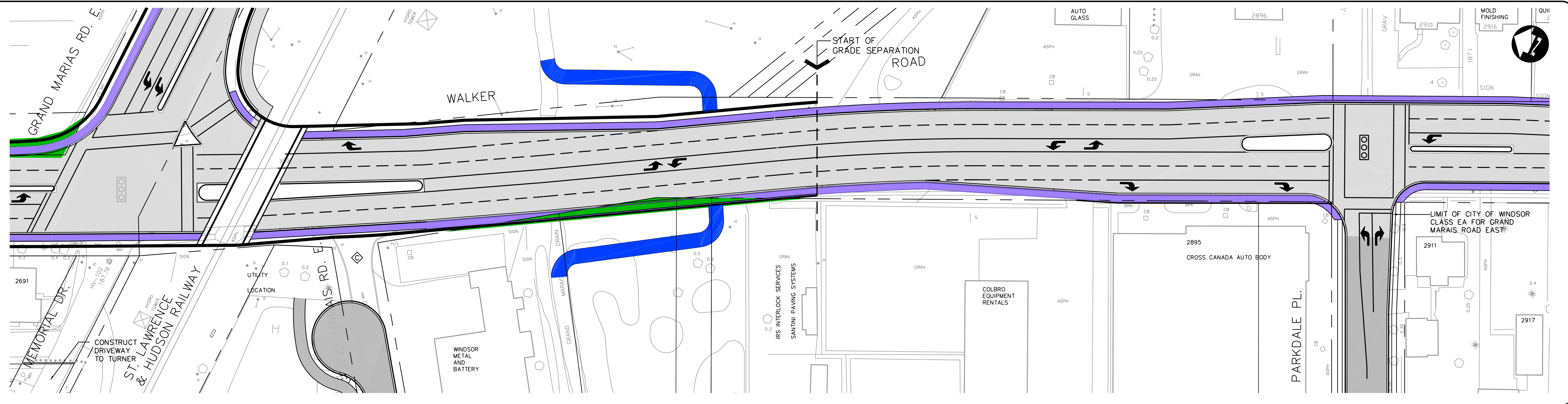
- NEW SIDEWALKS
- NEW PAVEMENT
- EASEMENT
- PROPERTY ACQUISITION
- CONCEPTUAL DRIVEWAY LOCATION

- ROAD CLOSURE (DETAILS TO BE DETERMINED)
- EXISTING TRAFFIC SIGNAL
- NEW TRAFFIC SIGNAL

**WALKER ROAD CORRIDOR
GRAND MARAIS ROAD EAST IMPROVEMENTS
ENVIRONMENTAL STUDY REPORT
PREFERRED DESIGN**

SCALE: 1500 MARCH, 2001 **FIGURE 14**

VIEW: SH15
G:\CAD\996401\6401ceen.dwg 03/22/2002 10:12:01 AM EST



- NEW SIDEWALKS
- NEW PAVEMENT
- EASEMENT
- PROPERTY ACQUISITION
- CONCEPTUAL DRIVEWAY LOCATION

LEGEND

- ROAD CLOSURE (DETAILS TO BE DETERMINED)
- EXISTING TRAFFIC SIGNAL
- NEW TRAFFIC SIGNAL

SCALE: 1500

MARCH, 2001

FIGURE 15

**WALKER ROAD CORRIDOR
GRAND MARAIS ROAD EAST IMPROVEMENTS
ENVIRONMENTAL STUDY REPORT
PREFERRED DESIGN**