

SANDWICH SOUTH MASTER SERVICING PLAN

PUBLIC CONSULTATION - JUNE 2022
STORMWATER MANAGEMENT OPTIONS
TO SERVE AREAS NORTH OF
COUNTY ROAD 42

OPTION A

- LAUZON PKWY POND 'P8' DRAINAGE BOUNDARY
- LAUZON PKWY POND 'P7' DRAINAGE BOUNDARY
- QUALITY FOREBAY
- TRUNK STORM SEWER
- NATURAL HERITAGE AREA
- OPEN SPACE / STORMWATER MANAGEMENT CORRIDOR
- PROPOSED DRAINAGE ARROW
- FUTURE COLLECTOR AND ARTERIAL ROADS

- STORMWATER PUMP STATION
- STORMWATER PERMANENT POOL
- STORMWATER MANAGEMENT POND - ACTIVE STORAGE
- OGS - OIL AND GRIT SEPARATOR
- TYPICAL POND NAME

- AIRPORT ZONES LEGEND**
- 2 KM RADIUS FROM AIRFIELD CENTRE (WILDLIFE CONTROL ZONE)
 - 4 KM RADIUS FROM AIRFIELD CENTRE (WILDLIFE CONTROL ZONE)
 - ZONE OF NO TOLERANCE
 - ZONE OF NO CONFIDENCE

OPTION A:
 THE PROPOSED LAUZON PARKWAY STORMWATER MANAGEMENT FACILITIES WILL PROVIDE DRAINAGE FOR THE PROPOSED LAUZON PARKWAY CORRIDOR BETWEEN THE MCGILL DRAIN AND COUNTY ROAD 42. THE AREA SOUTH OF COUNTY ROAD 42 WILL DRAIN TO POND P4.



MAP DRAWING INFORMATION:
 DATA PROVIDED BY CITY OF WINDSOR 2019, MNRF 2019, TOWN OF TECUMSEH 2019, ESSEX REGION CONSERVATION AUTHORITY 2019, COUNTY OF ESSEX

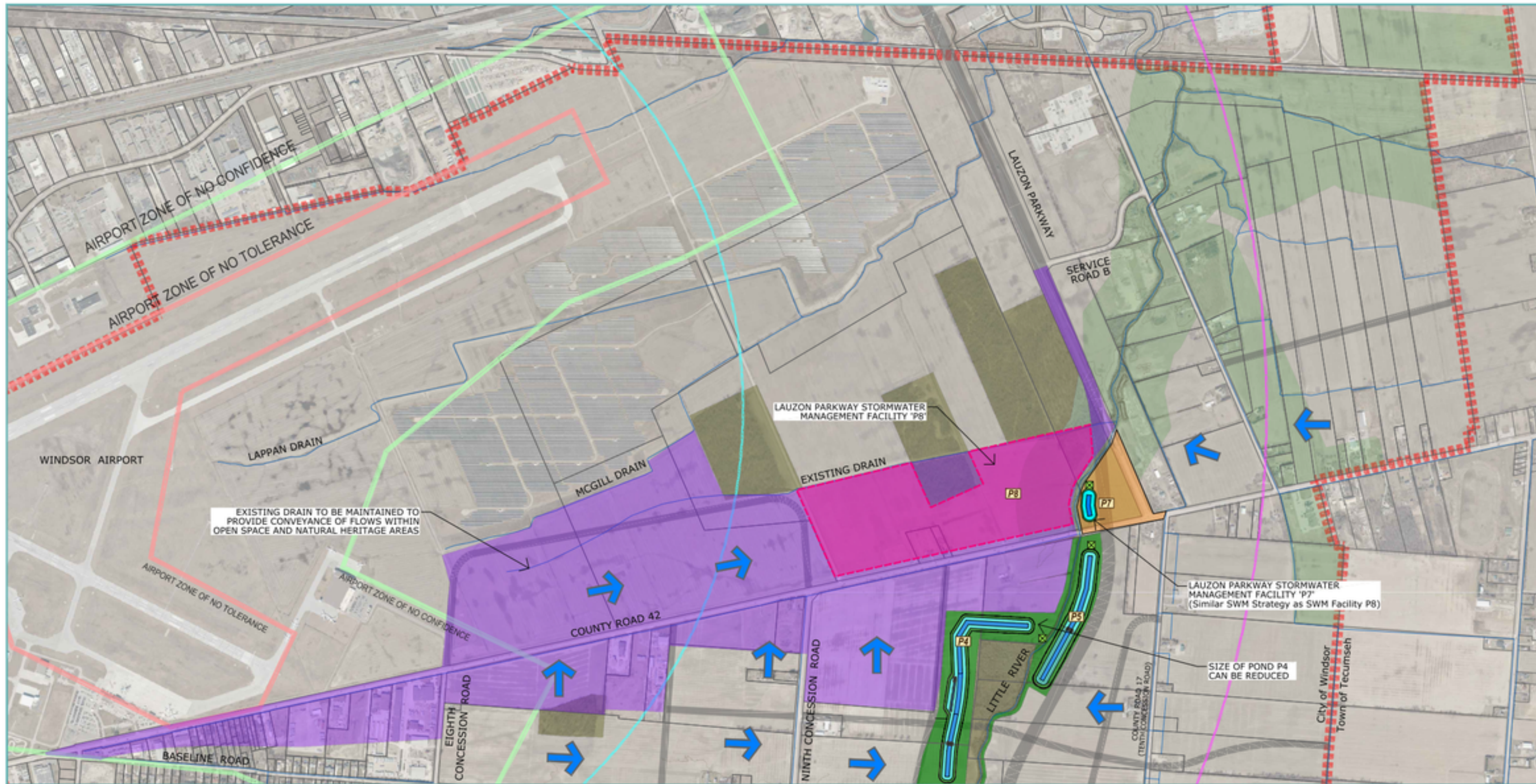
CREATED BY: RBH
 CHECKED BY: LMH
 DESIGNED BY: DCR
 MAP COORDINATE SYSTEM: NAD 1983 CSRS UTM Zone 17N

*DEM - COV02879 DEM SURFACE DERIVED BY ERCA BASED ON MNRF LIDAR - DIGITAL TERRAIN MODEL (2016-18). COPYRIGHT ERCA, 2019. CONTAINS INFORMATION LICENSED UNDER THE OPEN GOVERNMENT LICENCE - ONTARIO. (WWW.ONTARIO.CA/PAGE/OPEN-GOVERNMENT-LICENCE-ONTARIO)

**2019 IMAGERY - THE DIGITAL MAP LAYERS HAVE BEEN USED WITH EXPRESS PERMISSION OF THE CORPORATION OF THE COUNTY OF ESSEX



STATUS: FINAL PROJECT: 19-9817 DATE: June 05, 2022



SANDWICH SOUTH MASTER SERVICING PLAN

PUBLIC CONSULTATION - JUNE 2022

STORMWATER MANAGEMENT OPTIONS TO SERVE AREAS NORTH AND SOUTH OF COUNTY ROAD 42

OPTION B

- LAUZON PKWY POND 'P8' DRAINAGE BOUNDARY
- LAUZON PKWY POND 'P7' DRAINAGE BOUNDARY
- QUALITY FOREBAY
- TRUNK STORM SEWER
- FUTURE COLLECTOR AND ARTERIAL ROADS
- NATURAL HERITAGE AREA
- OPEN SPACE / STORMWATER MANAGEMENT CORRIDOR
- PROPOSED DRAINAGE ARROW

- STORMWATER PUMP STATION
- STORMWATER PERMANENT POOL
- STORMWATER MANAGEMENT POND - ACTIVE STORAGE
- OGS - OIL AND GRIT SEPARATOR
- TYPICAL POND NAME

- AIRPORT ZONES LEGEND**
- 2 KM RADIUS FROM AIRFIELD CENTRE (WILDLIFE CONTROL ZONE)
 - 4 KM RADIUS FROM AIRFIELD CENTRE (WILDLIFE CONTROL ZONE)
 - ZONE OF NO TOLERANCE
 - ZONE OF NO CONFIDENCE

OPTION B:

THE PROPOSED LAUZON PARKWAY STORMWATER MANAGEMENT FACILITIES WILL PROVIDE DRAINAGE FOR THE PROPOSED LAUZON PARKWAY CORRIDOR BETWEEN SERVICE ROAD B AND COUNTY ROAD 42. THE AREA SOUTH OF COUNTY ROAD 42 WILL DRAIN TO THE PROPOSED LAUZON PARKWAY STORMWATER MANAGEMENT FACILITY P8.



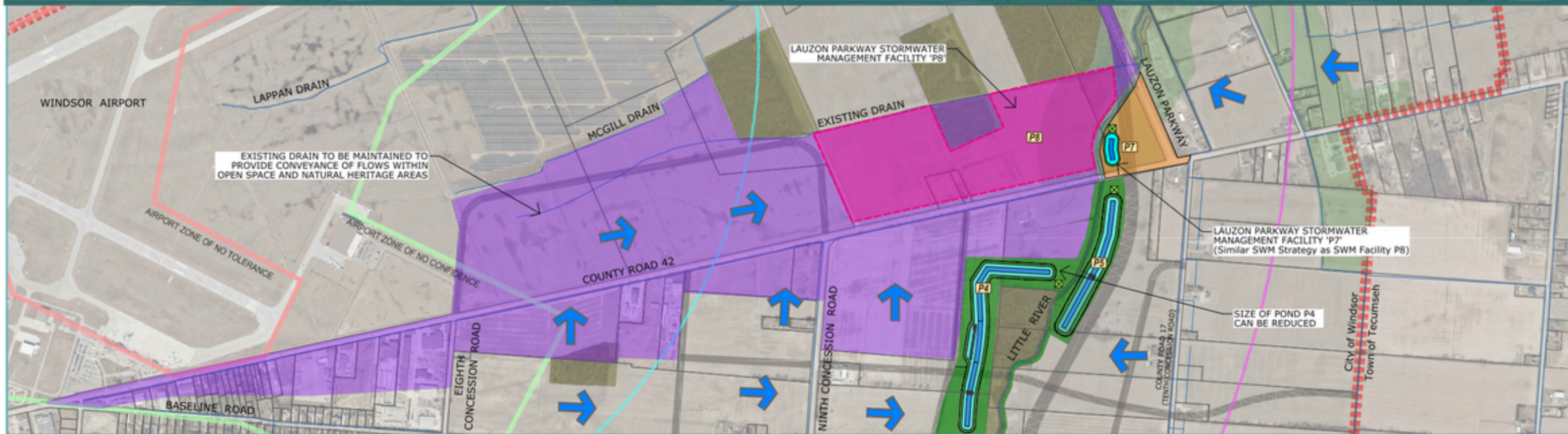
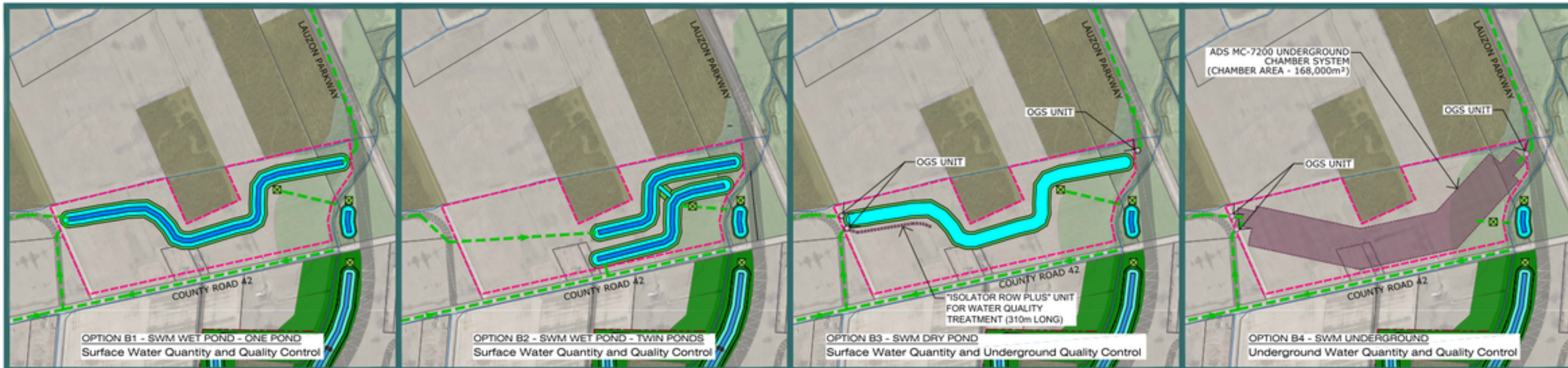
MAP DRAWING INFORMATION:
 DATA PROVIDED BY CITY OF WINDSOR 2019, MNRF 2019, TOWN OF TECUMSEH 2019, ESSEX REGION CONSERVATION AUTHORITY 2019, COUNTY OF ESSEX

CREATED BY: RBH
 CHECKED BY: LMH
 DESIGNED BY: DCR
 MAP COORDINATE SYSTEM: NAD 1983 CSRS UTM Zone 17N

*DEM - COV02879 DEM SURFACE DERIVED BY ERCA BASED ON MNRF LIDAR - DIGITAL TERRAIN MODEL (2016-18). COPYRIGHT ERCA, 2019. CONTAINS INFORMATION LICENSED UNDER THE OPEN GOVERNMENT LICENCE - ONTARIO. (WWW.ONTARIO.CA/PAGE/OPEN-GOVERNMENT-LICENCE-ONTARIO)

**2019 IMAGERY - THE DIGITAL MAP LAYERS HAVE BEEN USED WITH EXPRESS PERMISSION OF THE CORPORATION OF THE COUNTY OF ESSEX





SANDWICH SOUTH MASTER SERVICING PLAN

PUBLIC CONSULTATION - JUNE 2022
STORMWATER MANAGEMENT OPTIONS TO SERVE AREAS NORTH AND SOUTH OF COUNTY ROAD 42
OPTION B ALTERNATIVES

	LAUZON PKWY POND 'P8' DRAINAGE BOUNDARY		FUTURE COLLECTOR AND ARTERIAL ROADS		STORMWATER PUMP STATION
	LAUZON PKWY POND 'P7' DRAINAGE BOUNDARY		NATURAL HERITAGE AREA		STORMWATER PERMANENT POOL
	QUALITY FOREBAY		OPEN SPACE / STORMWATER MANAGEMENT CORRIDOR		STORMWATER MANAGEMENT POND - ACTIVE STORAGE
	TRUNK STORM SEWER		PROPOSED DRAINAGE ARROW		OGS - OIL AND GRIT SEPARATOR
					TYPICAL POND NAME

AIRPORT ZONES LEGEND

- 2 KM RADIUS FROM AIRFIELD CENTRE (WILDLIFE CONTROL ZONE)
- 4 KM RADIUS FROM AIRFIELD CENTRE (WILDLIFE CONTROL ZONE)
- ZONE OF NO TOLERANCE
- ZONE OF NO CONFIDENCE

OPTION B:

THE PROPOSED LAUZON PARKWAY STORMWATER MANAGEMENT FACILITIES WILL PROVIDE DRAINAGE FOR THE PROPOSED LAUZON PARKWAY CORRIDOR BETWEEN SERVICE ROAD B AND COUNTY ROAD 42. THE AREA SOUTH OF COUNTY ROAD 42 WILL DRAIN TO THE PROPOSED LAUZON PARKWAY STORMWATER MANAGEMENT FACILITY P8.

MAP DRAWING INFORMATION:
DATA PROVIDED BY CITY OF WINDSOR 2019, MNRF 2019, TOWN OF TECUMSEH 2019, "ESSEX REGION CONSERVATION AUTHORITY 2019, "COUNTY OF ESSEX

CREATED BY: RBH
CHECKED BY: UMH
DESIGNED BY: DCR
MAP COORDINATE SYSTEM: NAD 1983 CSRS UTM Zone 17N

"DEM - COV02879 DEM SURFACE DERIVED BY ERCA BASED ON MNRF LIDAR - DIGITAL TERRAIN MODEL (2016-SR) COPYRIGHT ERCA, 2019. CONTAINS INFORMATION LICENSED UNDER THE OPEN GOVERNMENT LICENCE - ONTARIO. (WWW.ONTARIO.CA/PAGE/OPEN-GOVERNMENT-LICENCE-ONTARIO)

"2019 IMAGERY - THE DIGITAL MAP LAYERS HAVE BEEN USED WITH EXPRESS PERMISSION OF THE CORPORATION OF THE COUNTY OF ESSEX

STATUS: FINAL PROJECT: 19-9817 DATE: June 01, 2022