

PUBLIC INFORMATION CENTRE

Tuesday, January 24th, 2012
4:00 to 8:00 p.m.

**LOCATION – Place Concorde – Richleau Room
7515 Forest Glade Drive
Windsor, Ontario**

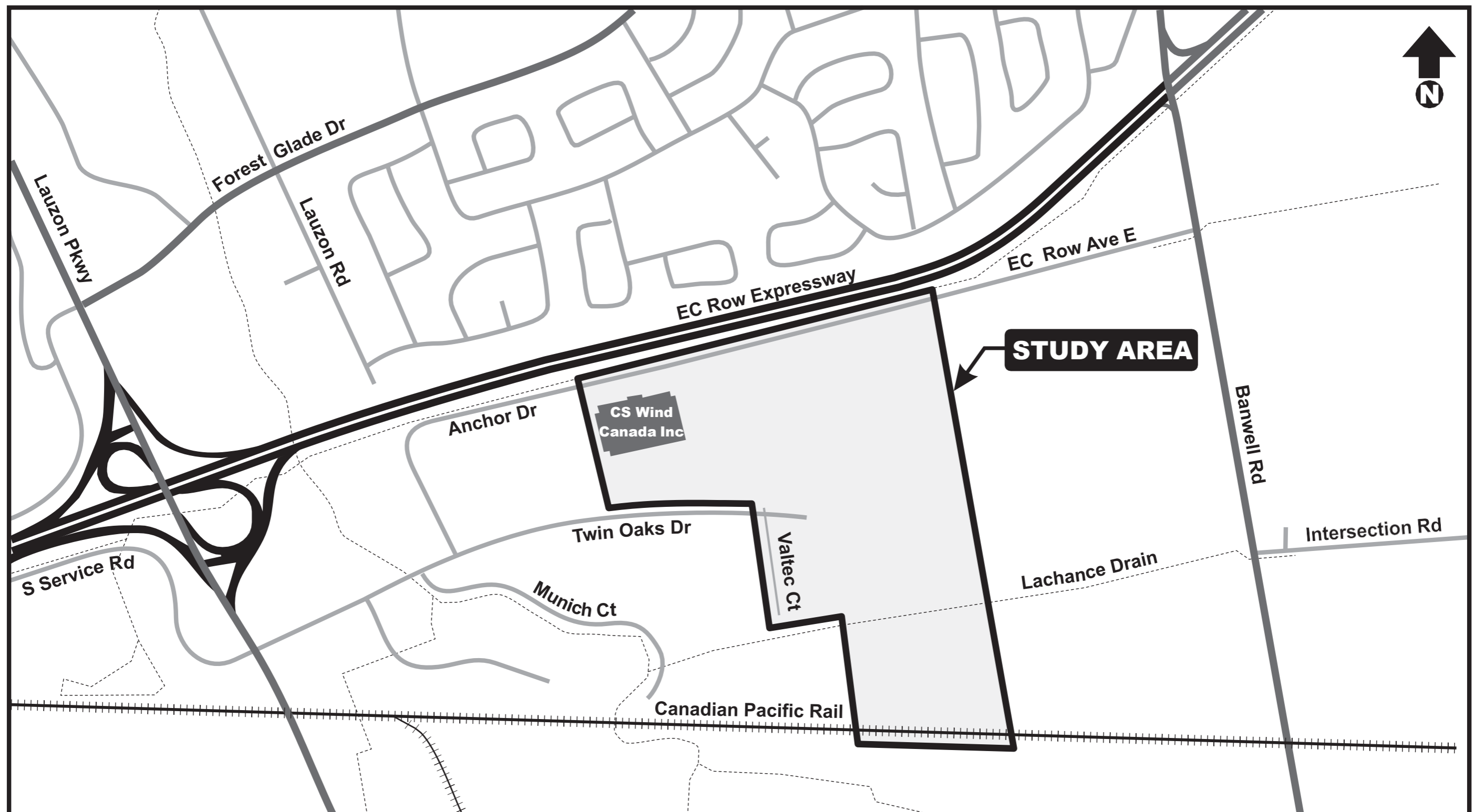
CONTENTS:

- Welcome
- Class EA Process
- Study Stages/Study Organization
- The Study Area
- Area Features
- Problem Statement
- Planning Alternatives
- Design Alternatives (includes plans)
- What Happens Next?

TWIN OAKS DRIVE, MUNICIPAL SERVICING AND RAILWAY SPUR LINE CLASS EA STUDY

WELCOME

Welcome to the first Public Information Centre for the Twin Oaks Drive, Municipal Servicing and Railway Spur Line Class Environmental Assessment Study.



Representatives from the City of Windsor and MMM Group (the City's consultant) are here to answer questions and discuss any aspect of the study with you. Please make your opinions known to us!

We also encourage you to complete a Comment Sheet before leaving.

CLASS EA PROCESS

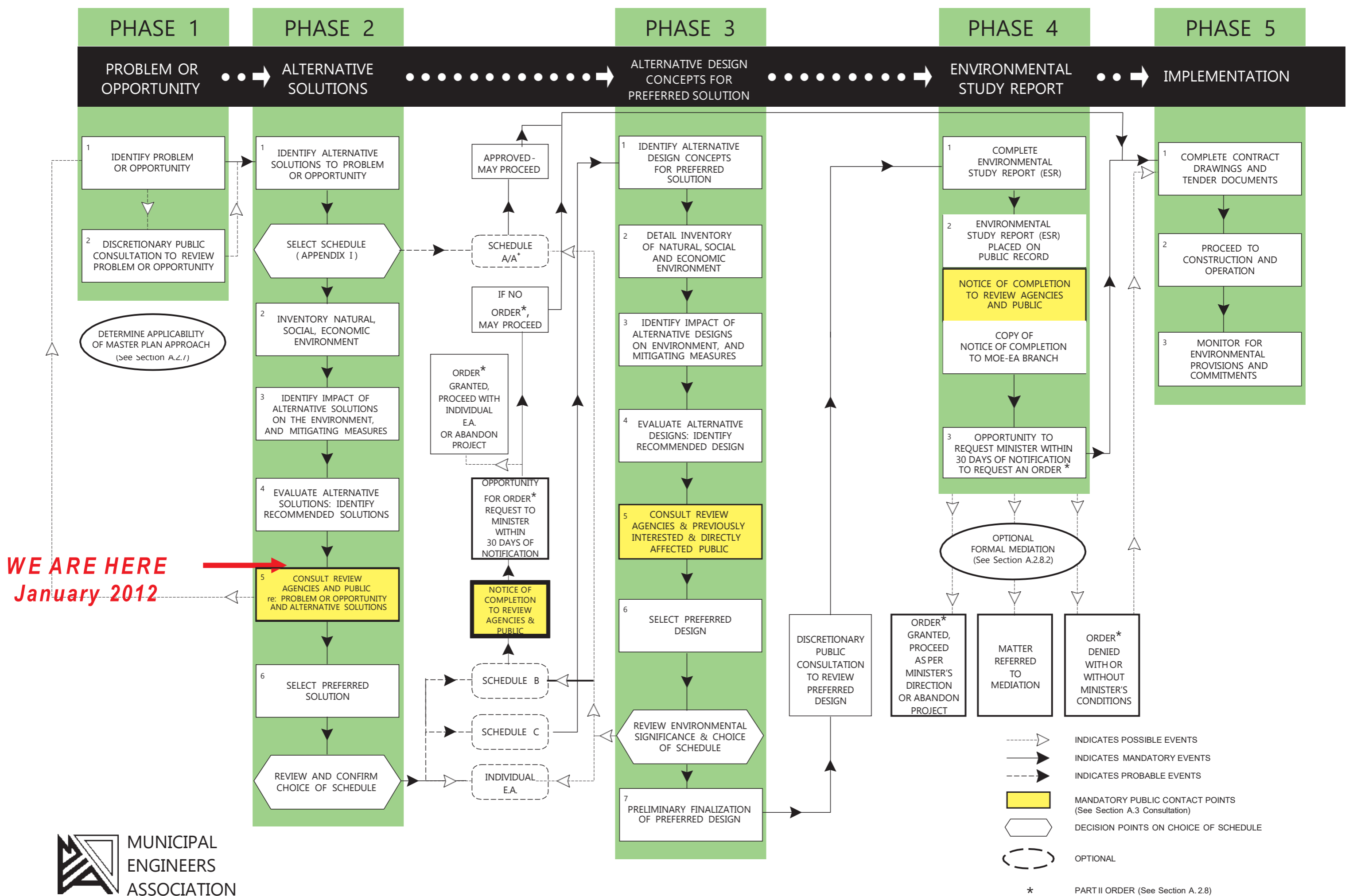
Under current provincial legislation, the planning and design of municipal road projects must be in accordance with Ontario Environmental Assessment Act. The Municipal Class EA describes the process that proponents (in this case City of Windsor) must follow to meet the requirements of the Act. This process reflects the following key principles:

- Consideration of a reasonable number of alternatives, including the "do nothing" alternative.
- Consultation with all affected parties, including the public, relevant governmental review agencies, other affected municipalities and utility companies.
- Identification and consideration of the affects of each alternative on all aspects of the environment, i.e. the impact on the natural, social, cultural, technical and economic/financial environment.
- Systematic evaluation of alternatives in terms of their advantages and disadvantages with respect to all aspects of the environment.
- Provision of clear and complete documentation of the planning process followed, to allow "traceability" of decision-making with respect to the project.

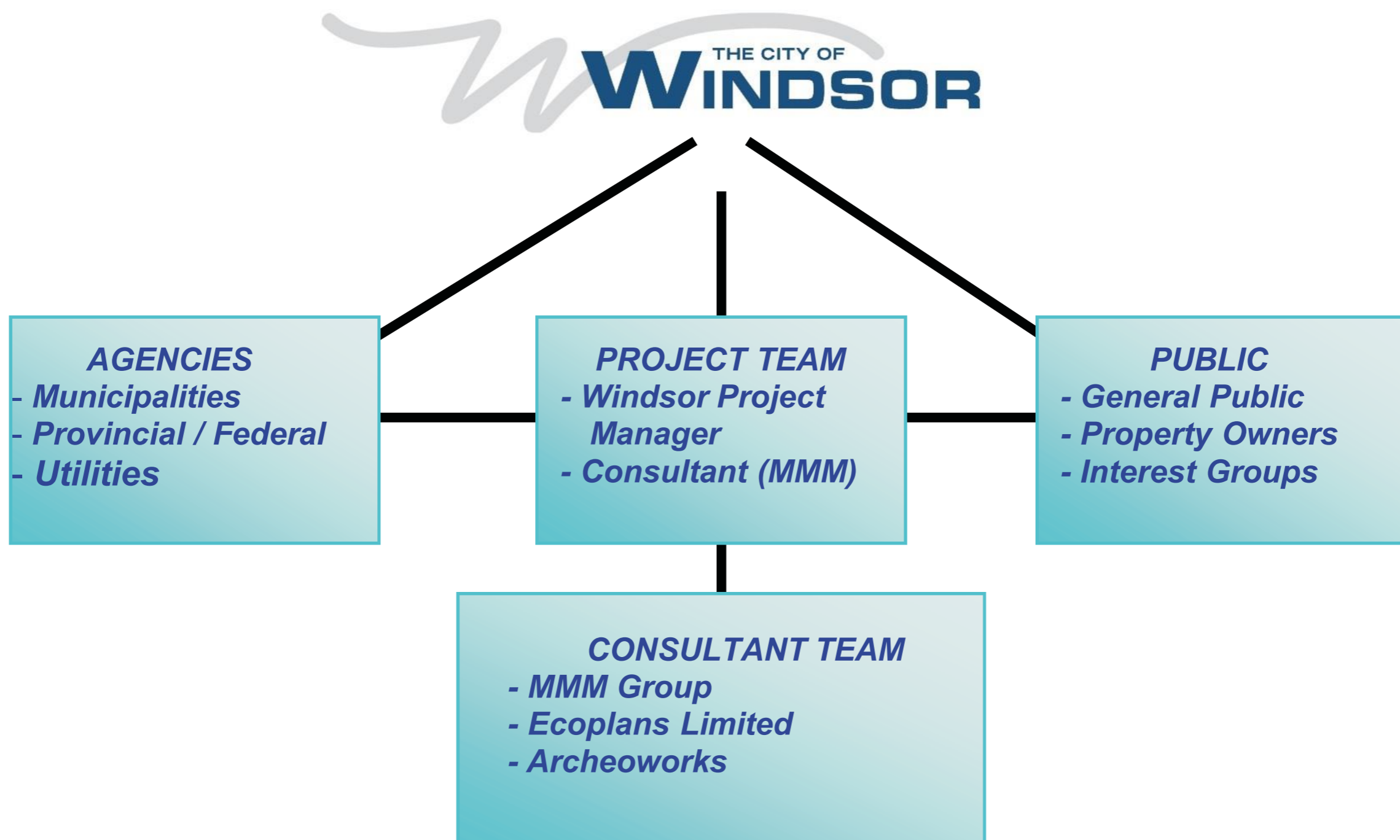
TWIN OAKS DRIVE, MUNICIPAL SERVICING AND RAILWAY SPUR LINE CLASS EA STUDY

STUDY STAGES

The process is shown in the following flow chart. This is a Schedule 'B' project and will therefore follow the first two phases.



STUDY ORGANIZATION



THE EXISTING STUDY AREA

