



**Lauzon Parkway Improvements
Class Environmental Assessment**
(Including Lauzon Parkway, County Road 42,
Future East-West Arterial, Sandwich South Secondary Plan Study)

**SUMMARY REPORT ON
PUBLIC INFORMATION CENTRE 1**



A member of  MMM GROUP

September 2011

CONTENTS

1.0 INTRODUCTION.....	2
2.0 PURPOSE	3
3.0 LOCATION, DATE AND TIME	3
4.0 PUBLIC NOTIFICATION.....	3
5.0 STAFF ATTENDANCE	4
6.0 MATERIAL DISPLAYED	4
7.0 PUBLIC INFORMATION CENTRE FORMAT	5
8.0 SUMMARY OF COMMENTS RECEIVED.....	6
9.0 NEXT STEPS.....	6

APPENDICES

APPENDIX A Public Information Centre Notice

APPENDIX B Contact List

APPENDIX C Display Panels

APPENDIX D Comment Sheets

APPENDIX E Sandwich South Secondary Plan Study Workshop #2 Summary Report

1.0 INTRODUCTION

As part of an Ontario/Canada announcement in April 2005 of the *Let's Get Windsor Essex Moving* strategy, a commitment was made to conduct an environmental assessment and preliminary design study to examine upgrades and the extension of Lauzon Parkway between the E.C. Row Expressway and Highway 401, and its further extension to Highway 3.

The environmental assessment and preliminary design of improvements to Lauzon Parkway is one of the initiatives to improve the Windsor-Detroit Gateway that was further announced by the Government of Ontario on April 9, 2010.

In addition, partners have agreed to include planning components related to County Road 42, a future East-West Arterial and a Secondary Plan Study for the Sandwich South lands. These components are included because of their interconnection to Lauzon Parkway.

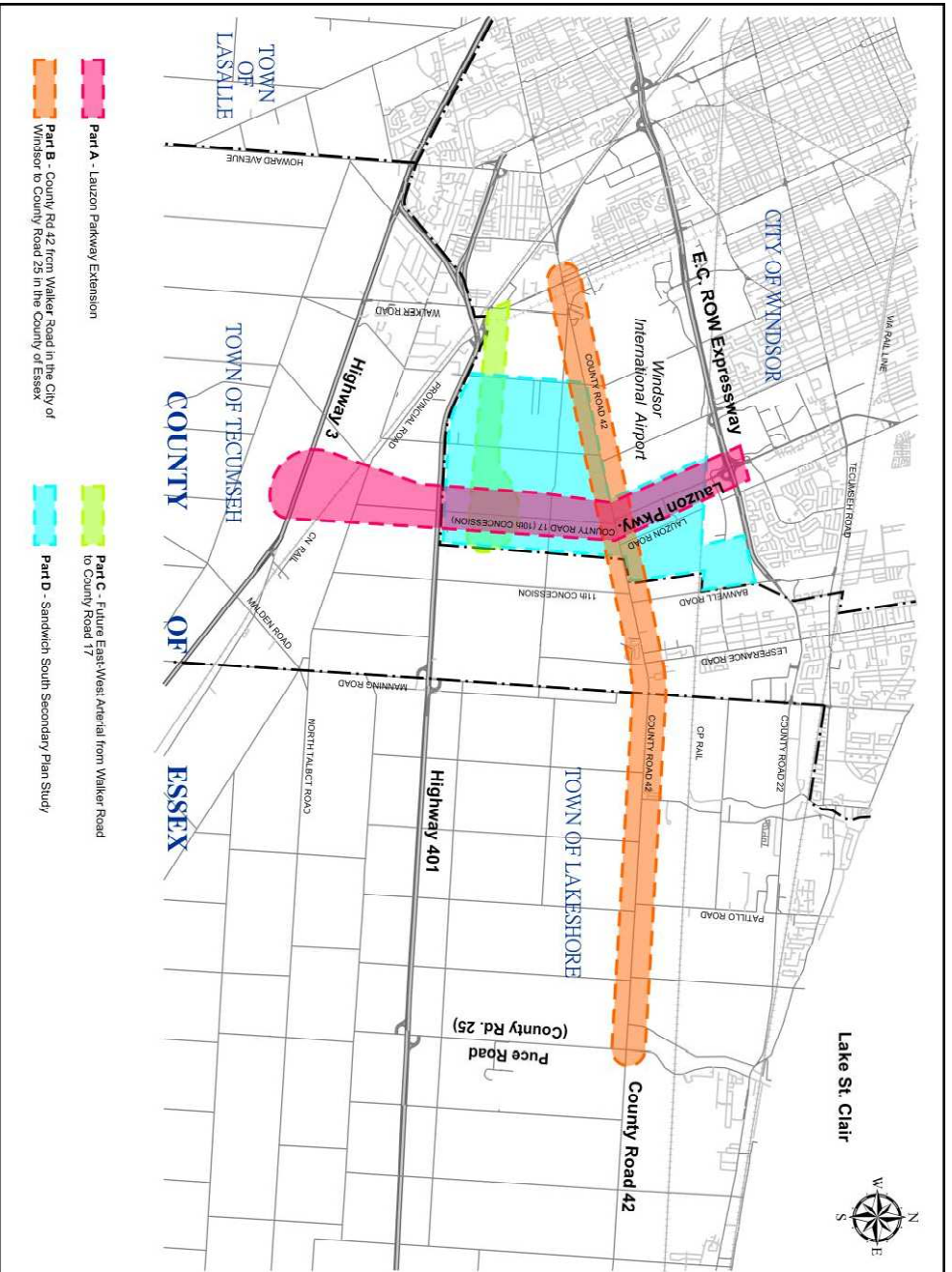
By combining environmental assessment and land use planning requirements into a single process, efforts are streamlined and promote effectively meeting the requirements of both the Planning Act and Environmental Assessment Act.

Based on the review of existing conditions and proposed growth/development, the study team has identified the need for improvements to the transportation infrastructures within the Study Area (Exhibit 1).

This report documents the first of two Public Information Centres (PIC) held during the planning process to allow the public an opportunity to review and comment on project details.

In addition, the second workshop for the Sandwich South Secondary Plan Study was held concurrently with PIC #1. As part of the Secondary Plan, three public workshops will be held during the planning process.

Exhibit 1 – Study Area



2.0 PURPOSE

PICs are informal meetings where planning and design plans that have been developed are presented for review and comment by area residents and other interested parties. PICs are part of the overall consultation program for this project and are designed to involve stakeholders early and throughout the study to identify public concerns and to assist in the development of a preferred alternative.

3.0 LOCATION, DATE AND TIME

Windsor Christian Fellowship
4490 7th Concession Road
Windsor, Ontario
Gymnasium
July 14, 2011
4:00 p.m. to 8:00 p.m.

4.0 PUBLIC NOTIFICATION

The PIC was advertised in the following newspaper:

- The Windsor Star Wednesday, June 28, 2011
- The Windsor Star Saturday, July 2, 2011
- Le Rempart (French publication) Wednesday, July 6, 2011
- Tecumseh Tribune Thursday, July 7, 2011
- Lakeshore News Thursday, July 7, 2011
- Tecumseh Shoreline Week Friday, July 8, 2011

A copy of the PIC notice is included in Appendix A.

PIC notices were distributed by direct mail to government agencies, local emergency services, utility companies and interest groups. This contact list is included in Appendix B.

The PIC notice included information on PIC #1 as well as Workshop #2 for the Sandwich South Secondary Plan Study. As mentioned previously, Workshop #2 was held concurrently with PIC #1.

In addition, over 1000 PIC notices were distributed by direct mail to property owners and businesses within the study area. In addition, MRC mailed notices to members of the public that requested to be included on the project contact list. A separate notice for the Workshop #2 for the Sandwich South Secondary Plan Study was prepared for the direct mailing. Both notices were included in one envelope.

5.0 STAFF ATTENDANCE

The following project team members were in attendance at the PIC to answer questions and discuss the study with the public:

Rakesh Shreewastav	Ministry of Transportation
Garfield Dales	Ministry of Transportation
Bob Felker	Ministry of Transportation
Dave Reis	Ministry of Transportation
Ron Lewis	Ministry of Transportation
Andrea Lam	Ministry of Transportation
Sean Lalonde	Ministry of Transportation
Lesley Racicot	Ministry of Transportation
Josette Eugeni	City of Windsor
Anna Godo	City of Windsor
Frank Scarfone	City of Windsor
Mike Clement	City of Windsor
Tiffany Pocock	City of Windsor
Patrick Winters	City of Windsor
Dustin Cierpisz	City of Windsor
Chris Aspila	City of Windsor
Greg Atkinson	City of Windsor
Mark Winterton	City of Windsor
Terry Symons	City of Windsor
Wesley Hicks	City of Windsor
Jane Mustac	County of Essex
James Bryant	County of Essex
Chad Jeffery	Town of Tecumseh
Gillian Thomspson	Ecoplans
Jim Dymont	Meridian
Michael Chiu	McCormick Rankin Corporation
Leslie Green	McCormick Rankin Corporation
Keyur Shah	McCormick Rankin Corporation

6.0 MATERIAL DISPLAYED

The following exhibits were displayed and are shown in Appendix C:

1. Welcome (text and photo)
2. Presentations (text and graphic)
3. Background (text and photo)
4. Study Area (text and key map)

5. Environmental Assessment Process (text and flow chart)
6. Study Process and Schedule (flow chart and text)
7. Sandwich South Secondary Plan Study (text and graphic)
8. Existing Conditions (text)
9. Existing Conditions – Natural Environment (map)
10. Existing Conditions – Land Use (map)
11. Existing Conditions – Transportation (text and graphic)
12. Projected Growth and Development (text and graphic)
13. Problem Statement
14. Stage 1 – Assessment of Individual Transportation Planning Alternatives (text and graphic)
15. Stage 2 – Assessment of Group Transportation Planning Alternatives (text and graphic)
16. Preferred Transportation Planning Alternatives (text)
17. Lauzon Parkway Extension Alternative Corridor Routes – Existing North-South Corridors (text and map)
18. Lauzon Parkway Extension Alternative Corridor Routes – New North-South Corridors (text and map)
19. County Road 42 (text, map and photo)
20. County Road 42 – Walker Road to Manning Road (County Road 19) (text, photo and graphic)
21. County Road 42 – Manning Road (County Road 19) to Puce Road (County Road 25) (text, photo and graphic)
22. Future East-West Arterial Alternative Corridor Routes (text and map)
23. Future East-West Arterial – West End Connection Alternatives (text and map)
24. Environmental Assessment Evaluation Criteria (text)
25. Next Steps (text and flow chart)
26. Please Complete a Comment Sheet (text)

7.0 PUBLIC INFORMATION CENTRE FORMAT

The PIC was a “drop-in centre” format. Individuals attending the PIC were asked to sign the register. They were informed of the availability of comment sheets, which they were encouraged to complete. They were then directed to follow the displays around the room. Staff members were available to answer questions and provide information on the study. Individuals who expressed specific concerns or comments were directed to the appropriate staff person for an explanation of how the concern or comments were being addressed.

In addition, brief project overview presentations were held at 5:00 p.m. and 6:30 p.m. to provide attendees with a summary of the displays and key points of interest.

Attendees were encouraged to provide their comments on the comment sheets at the PIC. If individuals wished to take comment sheets home, they were requested to provide their responses via mail, email or fax by August 5, 2011.

In addition, the second workshop for the Sandwich South Secondary Plan Study was held concurrently with offset participation times (5:30 p.m. and 7:00 p.m.), which allowed attendees the opportunity to attend both the PIC presentation and workshop session. As part of the Secondary Plan, three public workshops will be held during the planning process. A summary of the workshop is documented in a separate report included in Appendix E.

8.0 SUMMARY OF COMMENTS RECEIVED

The PIC was attended by over 80 people. There were 10 comment sheets submitted at the PIC, and 2 received following the PIC. In addition, 9 comments were received prior to the PIC. Copies of the comments are included in Appendix D.

The following is a summary of both the written and verbal comments that were received at or after the PIC.

- Timing of the transportation improvements
- Timing of the development of the Sandwich South lands
- Inquired about constructions cost
- Inquired about the completion date of study
- Inquired about property impacts
- Concern about accesses for Windsor Christian Fellowship and its associated properties
- Concern regarding the potential increase in truck traffic
- Inquired about the classification/number of lanes of Lauzon Parkway
- Inquired about the preferred route for Lauzon Parkway
- Preferred that Lauzon Parkway be kept as far as possible to east to preserve Sexton Sideroad and the alignment would be behind the houses.
- Concern regarding noise impacts to the properties along County Road 42.

9.0 NEXT STEPS

The study team will review all public input received. The study team will confirm the study findings, continue with field investigations, analyze and determine the preferred alternative, and carry out functional/preliminary design of the preferred alternative. In addition, the study team will prepare for the next PIC, which is expected on the fall of 2011.

In addition, a third workshop for the Secondary Plan Study will be held to present the final recommendations during the next PIC.

APPENDIX A
PUBLIC INFORMATION CENTRE NOTICE

Lauzon Parkway Improvements Class Environmental Assessment

(Including Lauzon Parkway / County Road 42 / Future East/West Arterial / Sandwich South Secondary Plan Study)

Notice of Public Information Centre #1

THE STUDY

McCormick Rankin Corporation has been retained by the Ontario Ministry of Transportation, the City of Windsor and the County of Essex, to initiate a Class Environmental Assessment Study to address the future requirements for Lauzon Parkway. The study includes:

- Lauzon Parkway from E.C. Row Expressway to County Road 42
- Lauzon Parkway's extension to Highway 401
- Lauzon Parkway's further extension to Highway 3
- the environmental assessment study for Essex County Road 42 from Walker Road to Essex County Road 25
- the environmental assessment study for the future east/west arterial from Walker Road to Essex County Road 17
- preparation and approval of a Secondary Plan for the remainder of the lands transferred to the City of Windsor in 2003 (lands are generally bounded by the CPR mainline north of the Windsor International Airport, Lauzon Parkway and the 8th Concession, and the City of Windsor boundary).

The study area is shown on the key map.

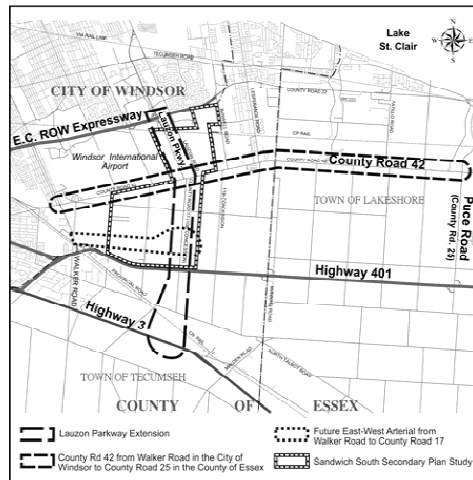
THE PROCESS

This study will follow the Ontario *Environmental Assessment Act* through the application of the *Municipal Class Environmental Assessment* (October 2000 as amended in May 2007). This study is also subject to the requirements of the *Canadian Environmental Assessment Act*. The preparation and approval of the Secondary Plan will follow the requirements of the *Ontario Planning Act*.

PUBLIC CONSULTATION

Public consultation is an important part of the environmental assessment process. We encourage everyone who has an interest in this project to provide input. Two Public Information Centres (PIC) will be held throughout the planning process to allow the public an opportunity to review and comment on project details.

The first PIC is scheduled for July 14, 2011 to provide stakeholders with an opportunity to meet the Project Team, review the study scope, existing conditions, need and justification, planning alternatives, preliminary generation of alternatives and next steps in the study. Brief project overview presentations will be held at 5:00 p.m. and 6:30 p.m. to provide attendees with a summary of the project and key points of interest.



In addition, Workshop #2 for the Secondary Plan Study will be held separately at the same venue and day:

Public Information Centre #1	
Date:	Thursday, July 14, 2011
Place:	Windsor Christian Fellowship 4490 7th Concession Road Windsor, Ontario
Time:	4:00 p.m. to 8:00 p.m. Brief Overview Presentations at 5:00 p.m. and 6:30 p.m.

Workshop #2	
Date:	Thursday, July 14, 2011
Place:	Windsor Christian Fellowship 4490 7th Concession Road Windsor, Ontario
Time:	Session 1: 5:30 p.m. to 6:30 p.m. Session 2: 7:00 p.m. to 8:00 p.m. (Session 2 is a repeat of Session 1)

COMMENTS

Information collected will be used in accordance with the *Freedom of Information and Protection of Privacy Act* and the *Access to Information Act*. With the exception of personal information all comments will become part of the public record. McCormick Rankin has created a study website (www.lauzonparkwayea.ca) and comment forms and study information are available. For further information, or to be added to the mailing list, please visit the study website or contact:

Mr. Michael Chiu, P. Eng.
Consultant Project Manager
McCormick Rankin Corporation
2655 North Sheridan Way, Suite 300
Mississauga, ON L5K 2P8
Toll Free: 1-877-562-7947
Phone: 905-823-8500
Fax: 905-823-8503
E-mail: lauzonparkwayea@mrc.ca

Ms. Jane Mustac, P.Eng.
Manager of Transportation Planning
County of Essex
360 Fairview Avenue West
Essex, ON N8M 1Y6
Phone: 519-776-6441 ext. 397
Fax: 519-776-4455
E-mail: jmustac@countyofessex.on.ca

Mr. Rakesh Shreewastav, P.Eng., AVS
Senior Project Engineer
Ministry of Transportation
Windsor Border Initiatives Implementation Group
Project Delivery Office
949 McDougall Avenue, Suite 200
Windsor, ON N9A 1L9
Phone: (519) 973-7367
Fax: (519) 973-7327
E-mail: rakesh.shreewastav@ontario.ca

Ms. Josette Eugeni, P.Eng.
Manager of Transportation Planning
City of Windsor
1266 McDougall Avenue
Windsor, ON N8X 3M7
Phone: 519-255-6418
Fax: 519-973-5476
E-mail: jeugeni@city.windsor.on.ca

Please visit the website at: www.lauzonparkwayea.ca

Des renseignements sont disponibles en français en composant (905) 823-8500 Poste 1471 (Yannick Garnier).



A member of MCM GROUP

APPENDIX B
CONTACT LIST

Federal Agencies and Provincial Agencies and Ministries

Mr. Joe de Laronde
Fisheries Biologist
Fisheries and Oceans Canada
Southern Ontario District
73 Meg Drive
London Ontario
N6E 2V2

Mr. Don Boswell
Sr. Claims Analyst - Specific Claims Branch
Ontario Research Team
Indian and Northern Affairs Canada
10 Wellington Street
13th Floor
Gatineau Quebec
K1A 0H4

Ms. Josee Beauregard
Team Leader - Ontario/Nunavut Litigation Team
Litigation Management and Resolution Branch
Indian and Northern Affairs Canada
10 Wellington Street
Room 1310
Gatineau Quebec
K1A 0H4

Ms. Linda MacWilliams
Regional Manager
Lands and ART Lands and Trust Services
Indian and Northern Affairs Canada
25 St. Clair Avenue East
8th Floor
Toronto Ontario
M4T 1M2

Ms. Sheila Allan
Senior EA Officer, Ontario Region
Environment Canada
867 Lakeshore Road
P.O. Box 5050
Burlington Ontario
L7R 4A6

Mr. Dave Legault
Manager-Data Collection
Aeronautical Information Services
Nav Canada
1601 Tom Roberts
P.O. Box 9824, Station T
Ottawa Ontario
K1G 6R2

Mr. Sean Darcy
Research Manager
Assessment and Historical Research Directorate
Indian and Northern Affairs Canada
10 Wellington Street
13th Floor
Gatineau Quebec
K1A 0H4

Algonquin Consultation Office
c/o jp2g Consultants Inc.
31 Riverside Drive
Suite 101
Pembroke Ontario
K8A 8R6

Environmental Unit
Environment & Natural Resources
Lands and Trusts Services
Indian and Northern Affairs Canada
25 St. Clair Avenue East
8th Floor
Toronto Ontario
M4T 1M2

CEAA CONTACT - MTO TO PROVIDE

Mr. Dave Reynolds
Manager, Engineering and Environmental Services
CN Rail
1 Administration
P.O. Box 1000
Concord Ontario
L4K 1B9

Mr. David Lukianow, P.Eng.
Manager, Public Works
Canadian Pacific Railway
1290 Central Parkway West
Suite 600
Mississauga Ontario
L5C 4R3

Ms. Karla Barboza
Heritage Conservation Adviser
Ministry of Tourism and Culture
Cultural Services Unit
401 Bay Street
Suite 1700
Toronto Ontario
M7A 0A7

Mr. Lee Orphan
Director
Ministry of the Environment
Southwestern Region, London Office
733 Exeter Road
London Ontario
N6E 1L3

TRANSPORT CANADA - MTO TO PROVIDE

Mr. Junior Francis
Utilities Coordinator
4 Welding Way
Concord Ontario
L4K 1B9

Mr. Drew Crinklaw
Rural Planner
Ministry of Agriculture, Food and Rural Affairs
Environmental Policy and Programs Branch - Agricultural
Land Use Unit
667 Exeter Road
London Ontario
N6E 1L3

Ms. Teresa Wagner
A/Heritage Planner
Ministry of Tourism and Culture
Cultural Services Unit
401 Bay Street
Suite 1700
Toronto Ontario
M7A 0A7

Mr. Craig Newton
Environmental Planner
Ministry of the Environment
Southwestern Region, London Office
733 Exeter Road
London Ontario
N6E 1L3

Mr. Mike Parker
APEP Supervisor
Ministry of the Environment
Southwestern Region
733 Exeter Road
London Ontario
N6E 1L3

Ms. Millicent Dixon
Manager, Client Services Section
Environmental Assessment and Approvals Branch
Ministry of the Environment
Attn: Michael Harrison
ONLY RECEIVES NOTICE OF COMPLETION
2 St. Clair Avenue West
Floor 12A
Toronto Ontario
M4V 1L5

Ms. Daraleigh Irving
District Planner
Ministry of Natural Resources
615 John Street North
Aylmer Ontario
N5H 2S8

Ms. Heather Levecque
Manager, Consultation Unit
Ministry of Aboriginal Affairs
Aboriginal Relations and Ministry Partnership Division
160 Bloor St E
9th Floor
Toronto Ontario
M7A 2E6

Ms. Lorena Weesit
Correspondence Unit
Ministry of Aboriginal Affairs
Aboriginal and Ministry Relationships
160 Bloor St E
4th Floor
Toronto Ontario
M7A 2E6

Mr. Lee Bradshaw
Senior Environmental Officer
Ministry of the Environment
Windsor District Office
4510 Rhodes Drive
Unit 620
Windsor Ontario
N8W 5K5

Mr. Bruce Curtis
Manager
Community Planning and Development
Ministry of Municipal Affairs & Housing
Municipal Services Office - Southwestern
659 Exeter Road, 2nd Floor
London Ontario
N6E 1L3

Ms. Holly Simpson
Area Biologist
Ministry of Natural Resources
870 Richmond Street West
P.O. Box 1168
Chatham Ontario
N7M 5L8

Mr. Martin Rukavina
Advisor, Aboriginal and Ministry Relationships Branch
Ministry of Aboriginal Affairs
160 Bloor St E
9th Floor
Toronto Ontario
M7A 2E6

Mr. Anil Wijesooriya
General Manager
Professional Services
Ontario Realty Corporation
1 Dundas Street West, Suite 2000
Toronto Ontario
M5G 2L5

Municipalities

No contacts included - County of Essex, City of Windsor, Town of Lakeshore and Town of Tecumseh are included on Project Team

Local Agencies

Ms. Rebecca Belanger
Conservation Planner
Essex Region Conservation Authority
360 Fairview Avenue West
Suite 311
Essex Ontario
N8M 1Y6

Mr. Jeremy Wychreschuk
Essex Region Conservation Authority
360 Fairview Avenue West
Suite 311
Essex Ontario
N8M 1Y6

Mr. Warren Kennedy
Director of Education
Greater Essex County District School Board
451 Park Street West
P.O. Box 210
Windsor Ontario
N9A 6K1

Mr. Paul Picard
Director of Education
Windsor-Essex Catholic District School Board
1325 California Avenue
Windsor Ontario
N9B 3Y6

Mr. Rob Lyons
Program Manager, Health Inspection Department
Windsor Essex County Health Unit
1005 Oulette Avenue
Windsor Ontario
N9A 4J8

Ms. Gabrielle McMillan
Manager of Student Transportation
Student Transportation Services
360 Fairview Avenue West
Suite 318
Essex Ontario
N8M 3G4

Ms. Janine Griffore
Director of Education
Conseil Scolaire de District des Ecoles Catholiques du Sud-Ouest
7515 Forest Glade Dr
Windsor Ontario
N8T 3P5

Monsieur Jean-Luc Bernard
Director of Education
Conseil Scolaire Viamonde
116 Cornelius Pkwy
Toronto Ontario
M6L 2K5

Mr. Rob Larret
Planning Manager
Transit Windsor
3700 North Service Road East
Windsor Ontario
N8W 5X2

Emergency Services

Sergeant Jim Thomas
Ontario Provincial Police
Essex Detachment
P.O. Box 910
Essex Ontario
N8M 2Y2

Provincial Constable S.W. Johnston
Ontario Provincial Police
Essex Detachment
P.O. Box 910
Essex Ontario
N8M 2Y2

Inspector Kent Skinner
Regional Manager - Traffic and Marine
Ontario Provincial Police
6355 Westminster Drive
P.O. Box 57, Lambeth Stn
London Ontario
N6P 1T2

Mr. Dean Wilkinson
Operations Manager
Essex-Windsor EMS
920 Mercer Street,
2nd Floor
Windsor Ontario
N9A 1N6

Mr. Conrad Marier
Liaison Officer
Central Ambulance Communications Centre
4510 Rhodes Drive
Suite 320
Windsor Ontario
N8W 5K5

Chief Gary Smith
c/o Barry Horrobin, Director of Planning
Windsor Police
P.O. Box 60
Windsor Ontario
N9A 6J5

Fire Chief David Fields
Windsor Fire and Rescue
815 Goyeau Street
Windsor Ontario
N9A 1H7

Mr. Al Reaume
Deputy Chief of Operations
Windsor Fire and Rescue
815 Goyeau Street
Windsor Ontario
N9A 1H7

Fire Chief Don Williamson
Lakeshore Fire Rescue
419 Notre Dame
Belle River Ontario
N0R 1A0

Fire Chief Ken McMullen
Town of Tecumseh Fire/Rescue
985 Lesperance Road
Tecumseh Ontario
N8N 1W9

Inspector Bob Hamilton
Town of Tecumseh Fire/Rescue
985 Lesperance Road
Tecumseh Ontario
N8N 1W9

Utilities and Airport

Mr. Walter Kloostra
Transmission Lines Sustainment Manager
Hydro One Networks Inc.
483 Bay Street
TCT 15
Toronto Ontario
M5G 2P5

Mr. Richard LePage
Bell Canada
P.O. Box 1601
1149 Goyeau Street
Windsor Ontario
N9A 6R8

Mr. Mike Weingust
System Planner-Windsor
Cogeco Cable Inc.
2525 Dougall Avenue
Windsor Ontario
N8X 1T5

Mr. Bill Sorrell
Western Ontario Planning Leadhand
Cogeco Cable Inc.
2525 Dougall Avenue
Windsor Ontario
N8X 1T5

Mr. Marvio Vinhaes
ENWIN Utilities
P.O. Box 1625, Stn A
4545 Rhodes Drive
Windsor Ontario
N9A 5T7

Mr. Norbert Poggio
Director, Water Engineering
Windsor Utilities Commission
4545 Rhodes Drive
P.O. Box 1625, Station A
Windsor Ontario
N9A 5T7

Mr. Ed Farwell
Union Gas Limited
650 Division Road
P.O. Box 700
Windsor Ontario
N9A 6N7

Mr. Sam Sathanantham
Windsor Utilities Commission
4545 Rhodes Drive
P.O. Box 1625, Station A
Windsor Ontario
N9A 5T7

Ms. Federica Nazzani
President and CEO
Windsor Airport
3200 County Road 42
Windsor Ontario
N9A 6J3

Mr. Phil Roberts
Director of Operations
Windsor Airport
3200 County Road 42
Windsor Ontario
N9A 6J3

Interest Groups/Stakeholders

c/o Susan Vadori Committee Coordinator
Windsor Bicycling Committee
Council Services
350 City Hall Square W
Rm 203
Windsor Ontario
N9A 6S1

Essex County Field Naturalists' Club
Devonshire Mall P.O.
P.O. Box 23011
Windsor Ontario
N8X 5B5

Mr. Brent Groves
Co-ordinator
Essex County Stewardship Network
870 Richmond Street West
P.O. Box 1168
Chatham Ontario
N7M 5L8

J. Calhoun
Windsor Heritage Committee
City of Windsor Planning Department
400 City Hall Square E.
Suite 404B
Windsor Ontario
N9A 7K6

Mr. Derek Coronardo
Citizens Environmental Alliance
1950 Ottawa Street
Windsor Ontario
N8Y 1R7

c/o Averil Parent and Sue Vadori
Windsor Essex County Environmental Committee
350 City Hall Square W
Rm 203
Windsor Ontario
N9A 6S1

Mr. Tom Bain
County Warden
County of Essex
360 Fairview Avenue West
Suite 202
Essex Ontario
N8M 3G4

APPENDIX C
DISPLAY PANELS

LET'S GET WINDSOR-ESSEX MOVING!

Welcome to the

**Lauzon Parkway Improvements
Class Environmental Assessment Study**

(Including Lauzon Parkway / County Road 42 / Future East-West Arterial and
the Sandwich South Secondary Plan Study)

Public Information Centre 1

July 14, 2011

4:00 p.m. to 8:00 p.m.

***PLEASE SIGN-IN
AT THE FRONT DESK***



WELCOME

This is the first of two Public Information Centres (PIC) to be held during the planning process to allow the public an opportunity to review and comment on project details.

The PIC has been arranged to present:

- the study scope,
- existing conditions,
- problem statement,
- transportation planning alternatives,
- preliminary generation of design alternatives, and
- next steps in the study.



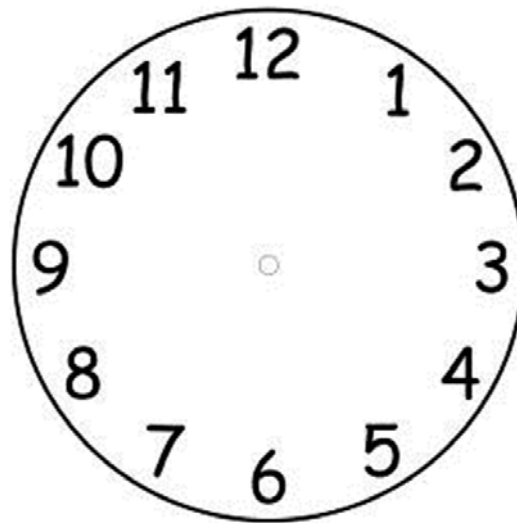
There are representatives of the Ontario Ministry of Transportation (MTO), City of Windsor, County of Essex and their consultants available to discuss the project with you.

Please take the time to review the Display Panels and speak to any member of the study team, ask questions, and provide your comments. There are comment sheets available to be completed.

PRESENTATIONS

We will be giving a brief presentation on the information that is on the displays today at 5:00 p.m. and 6:30 p.m.

The next presentation will be at:



Please feel free to approach our project team members to ask questions or provide comments after the presentation.

BACKGROUND

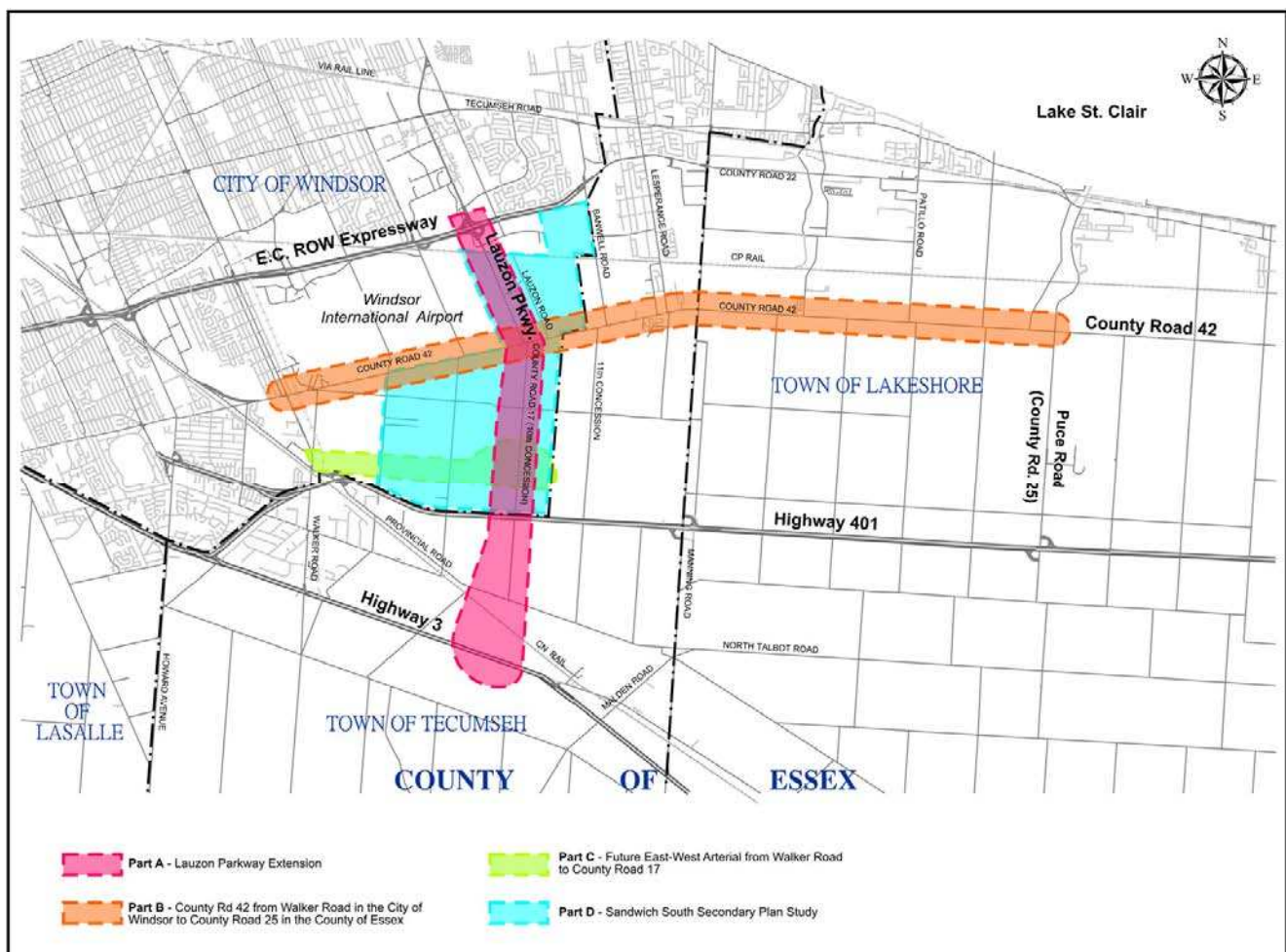
- As part of an Ontario/Canada announcement in April 2005 of the ***Let's Get Windsor Essex Moving*** strategy, a commitment was made to conduct an environmental assessment and preliminary design study to examine upgrades and the extension of Lauzon Parkway between the E.C. Row Expressway and Highway 401, and its further extension to Highway 3.
- The environmental assessment and preliminary design of improvements to Lauzon Parkway is one of the initiatives to improve the Windsor-Detroit Gateway that was further announced by the Government of Ontario on April 9, 2010.
- In addition, partners have agreed to include planning components related to County Road 42, a future East-West Arterial and a Secondary Plan Study for the Sandwich South lands. These components are included because of their interconnection to the potential improvements to Lauzon Parkway.



STUDY AREA

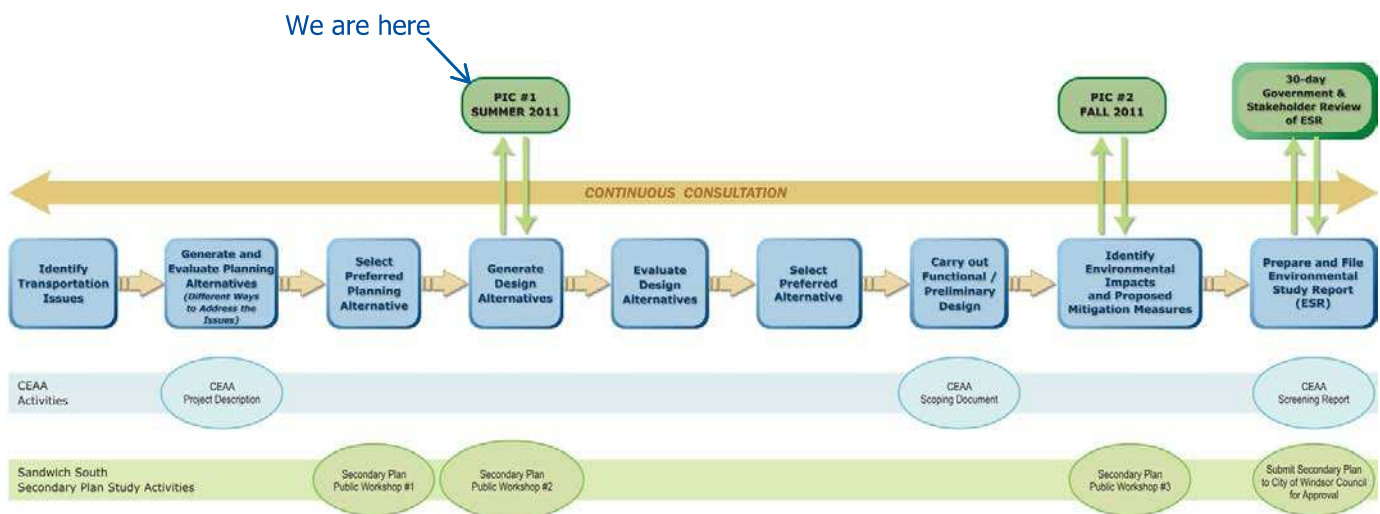
The study has the following main components:

- Part A (Red) – Lauzon Parkway:
 - Lauzon Parkway from E.C. Row Expressway to County Road 42;
 - Lauzon Parkway’s extension to Highway 401; and
 - Lauzon Parkway’s further extension to Highway 3.
- Part B (Orange) – County Road 42 from Walker Road to County Road 25.
- Part C (Green) – Future East-West Arterial from Walker Road to County Road 17.
- Part D (Blue) – Sandwich South Secondary Plan Study for the remainder of the lands transferred to the City of Windsor in 2003.



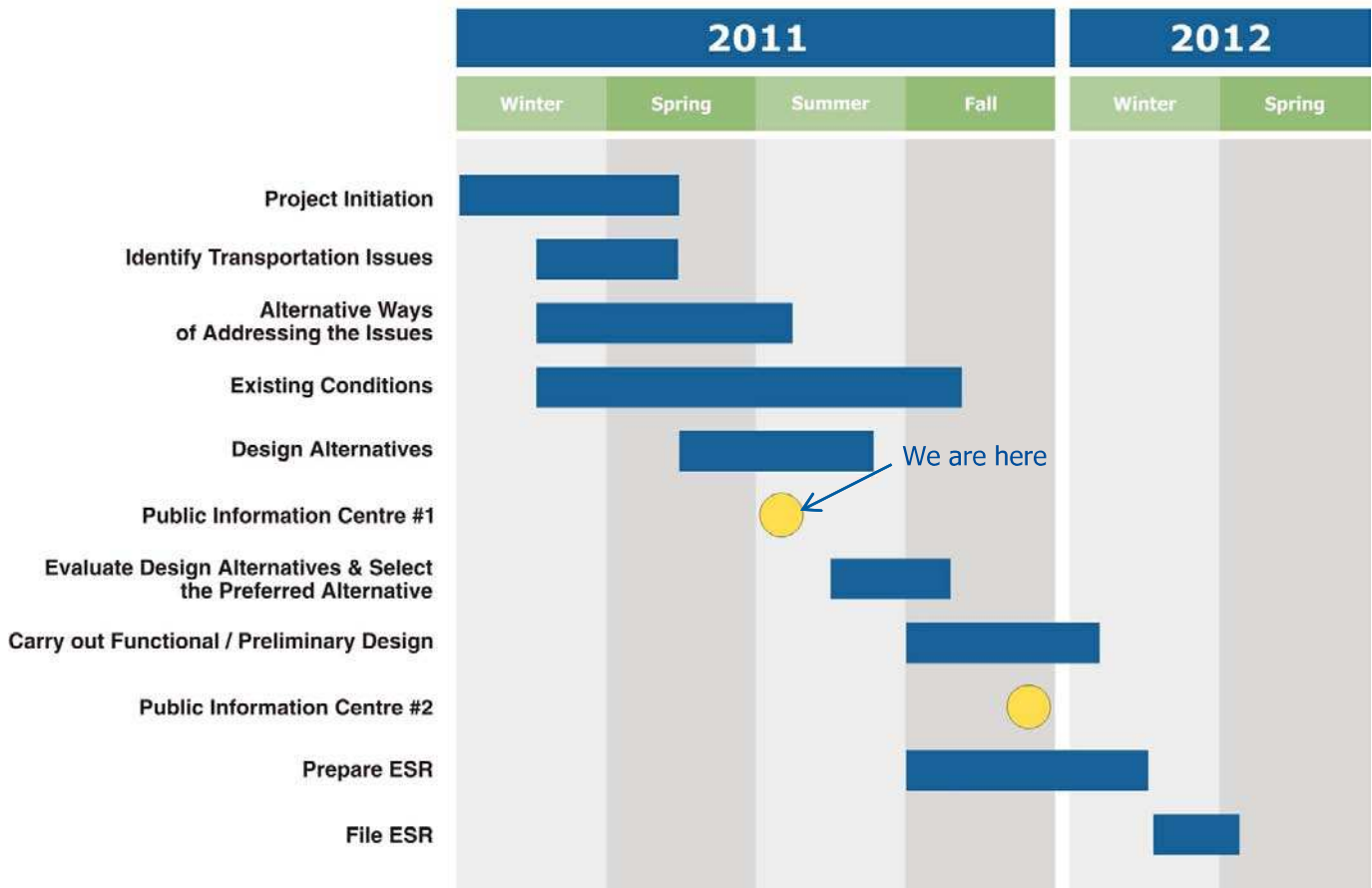
ENVIRONMENTAL ASSESSMENT PROCESS

- This study will follow the Ontario *Environmental Assessment Act* through the application of the *Municipal Class Environmental Assessment*. This study is also subject to the requirements of the *Canadian Environmental Assessment Act* and will refer to the *Environmental Assessment for Provincial Transportation Facilities* for potential highway improvements.
- The preparation and approval of the Secondary Plan will follow the requirements of the *Ontario Planning Act*.



STUDY PROCESS AND SCHEDULE

The Major Activities of the Lauzon Parkway Improvements Class Environmental Assessment are:

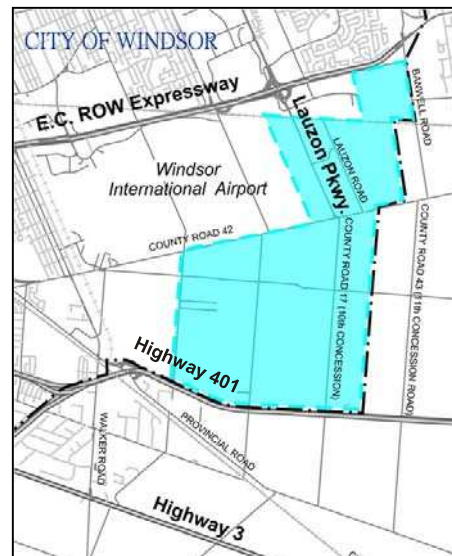


- In addition, as part of the Secondary Plan, three public workshops will be held throughout the planning process to provide an opportunity to review and comment on the plan details.

SANDWICH SOUTH SECONDARY PLAN STUDY

- As part of the Lauzon Parkway Improvements Class EA Study, a Secondary Land Use Plan is being prepared for the lands east and south of the airport referred to as the Sandwich South lands.
- The Secondary Plan will establish detailed development guidelines and a future land use pattern for the area and will be incorporated into the Official Plan for the City of Windsor.
- Public Workshop #1 was held on May 19, 2011. Over 110 individuals attended the workshop. Participants provided input on the current and future characteristics of the area, development issues and objectives for future development.
- Public Workshop #2 is being held today at the Windsor Christian Fellowship to receive input on future design concepts and development criteria for the area:
 - Session 1: 5:30 p.m. to 6:30 p.m.
 - Session 2: 7:00 p.m. to 8:00 p.m.

(NOTE: Session 2 is a repeat of Session 1)



EXISTING CONDITIONS

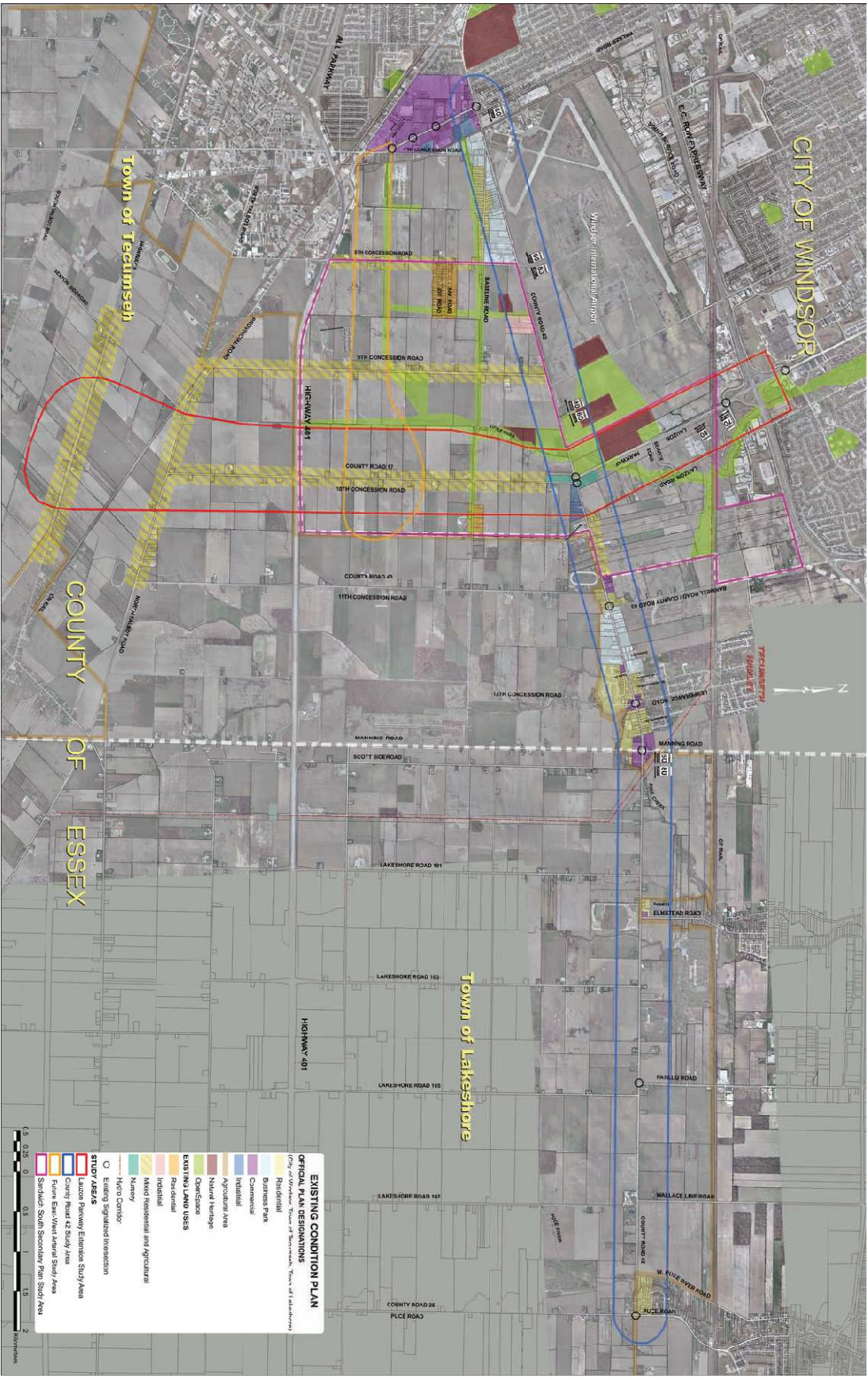
- Existing conditions information has been collected from a number of external sources such as agency databases, as well as reviews of aerial photography and mapping, and general field investigation.
- This information has been used to assist in the evaluation of the planning alternatives and the generation of design alternatives.
- The following maps outline existing land uses and natural environmental features.
- Additional data collection, agency consultation and general field investigation will occur this summer and fall to assist in the evaluation of alternatives and selection of a preferred alternative.

EXISTING CONDITIONS - NATURAL ENVIRONMENT

Lauzon Parkway Improvements
Class Environmental Assessment



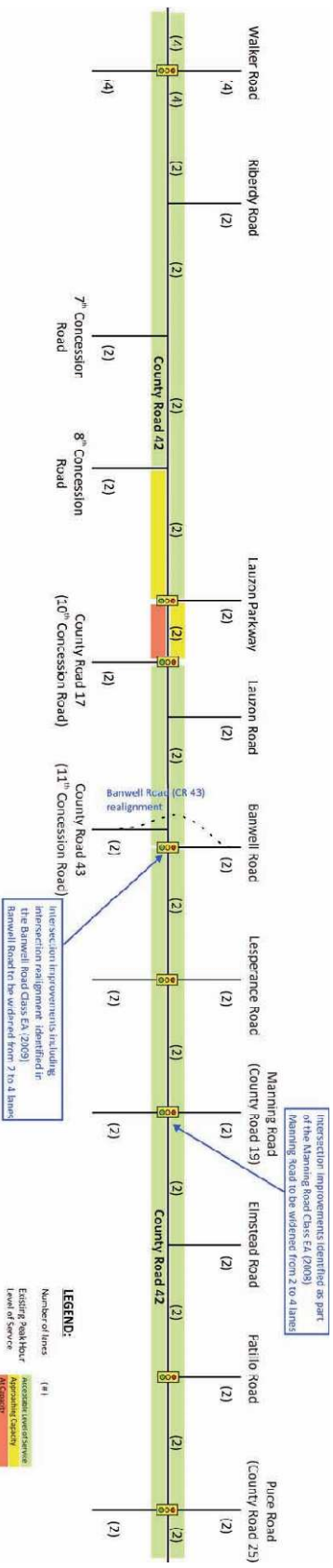
Lauzon Parkway Improvements
 Class Environmental Assessment
EXISTING CONDITIONS – LAND USE



EXISTING CONDITIONS - TRANSPORTATION

- Traffic has been steadily increasing in the Study Area, growing at an average 3% per year over the last 25 years.
- Walker Road and Manning Road, which are 8 km apart, are the only two existing north-south arterials with connections to Highway 401 and E.C. Row Expressway. This results in a concentration of north-south traffic on these two roads. **As a result, these roadways are currently operating at capacity.**

- County Road 42 is a key east-west arterial in the study area. It provides continuous connection between the Town of Tecumseh, Town of Lakeshore and the City of Windsor. In general, the roadway is currently operating at an acceptable level-of-service. However, during peak hours, the roadway is approaching capacity in the vicinity of the Lauzon Parkway and County Road 17 intersections. In addition, there are movements (i.e. through traffic, left-turns and right-turns) at intersections (such as Walker Road, Lauzon Parkway, Banwell Road, County Road 17, Lesperance Road and Manning Road) that are approaching capacity during peak hours.








PROBLEM STATEMENT

- In the Study Area:
 - Congestion is currently being experienced on the existing road network during peak periods. Several intersection movements are approaching capacity.
 - Limited existing North-South and East-West linkage to provide a grid transportation system.
 - Future projected growth in the City of Windsor and County of Essex will result in further demand on the existing road network.
 - Congestion on the road network will worsen as a result of the future development associated with the Sandwich South Secondary Plan area, which cannot be accommodated by the existing road network.
- ***Therefore, in order to address the existing congestion, support the new economic development and improve the access for residents and business in East Windsor and neighbouring municipalities, this study will identify opportunities to improve the transportation infrastructure within the Study Area.***

STAGE 1 - ASSESSMENT OF INDIVIDUAL TRANSPORTATION PLANNING ALTERNATIVES

- Transportation planning alternatives were investigated to address the identified problems and opportunities in the Study Area.
- The assessment of the alternatives was based on a two-stage process:
 - Stage 1 - examined each transportation planning alternative individually on its potential to address the identified problems.
 - Stage 2 - alternatives that contribute to addressing the identified transportation needs were then grouped for further assessment and consideration.
- The transportation planning alternatives that were considered included:

Carried Forward

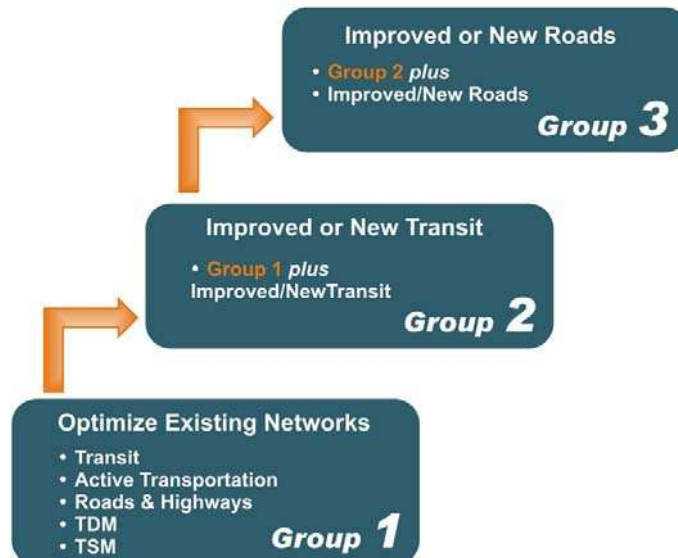
Do Nothing		<ul style="list-style-type: none"> • maintain status quo • changes to the transportation system would be limited to the implementation of programmed or approved provincial and municipal initiatives 	X
Travel Demand Management (TDM)		<ul style="list-style-type: none"> • implement methods to reduce travel demand on roads • e.g., alternate modes of transportation, ridesharing, minimizing frequency of travel, flex time 	✓
Transportation Systems Management (TSM)		<ul style="list-style-type: none"> • implement methods to increase efficiency, safety and capacity of existing transportation systems • e.g., optimization and coordination of traffic signals, intersection improvements, converting existing lanes to High Occupancy Vehicle (HOV) lanes, Intelligent Transportation Systems (ITS) 	✓
Active Transportation		<ul style="list-style-type: none"> • implement methods to increase human-powered transportation – walking, cycling, using a wheelchair, in-line skating or skateboarding. • e.g. provisions of cycling and pedestrian facilities. 	✓
Improve / New Transit		<ul style="list-style-type: none"> • improvements may include increased services/capacity of the existing transit services and/or new/expanded transit services. 	✓
Improve / New Roads		<ul style="list-style-type: none"> • provision of improved capacity and operations on existing facilities and/or providing new roadways beyond what is already planned for as part of programmed or approved provincial and municipal initiatives 	✓

- The findings of Stage 1 identified that except possibly with 'Improve/New Roadways', no other individual alternative can fully address the problems and opportunities identified by the study. As such, with the exception of "Do Nothing", all individual planning alternatives were carried forward for further consideration to Stage 2 of the process – the assembly of group alternatives.

STAGE 2 - ASSESSMENT OF GROUP TRANSPORTATION PLANNING ALTERNATIVES

- A 'building block' approach was used to assemble the group alternatives based on the principles: first optimizing the existing transportation network, and then if necessary, incorporating non-roadway infrastructure improvements and expansion before considering the widening of existing roadways or the provision of new roads and/or highways.
- This approach is consistent with current government policy to optimize existing infrastructure before new infrastructure is built.

Key Steps:



PREFERRED TRANSPORTATION PLANNING ALTERNATIVES

- The assessment of the group alternatives is as follows:

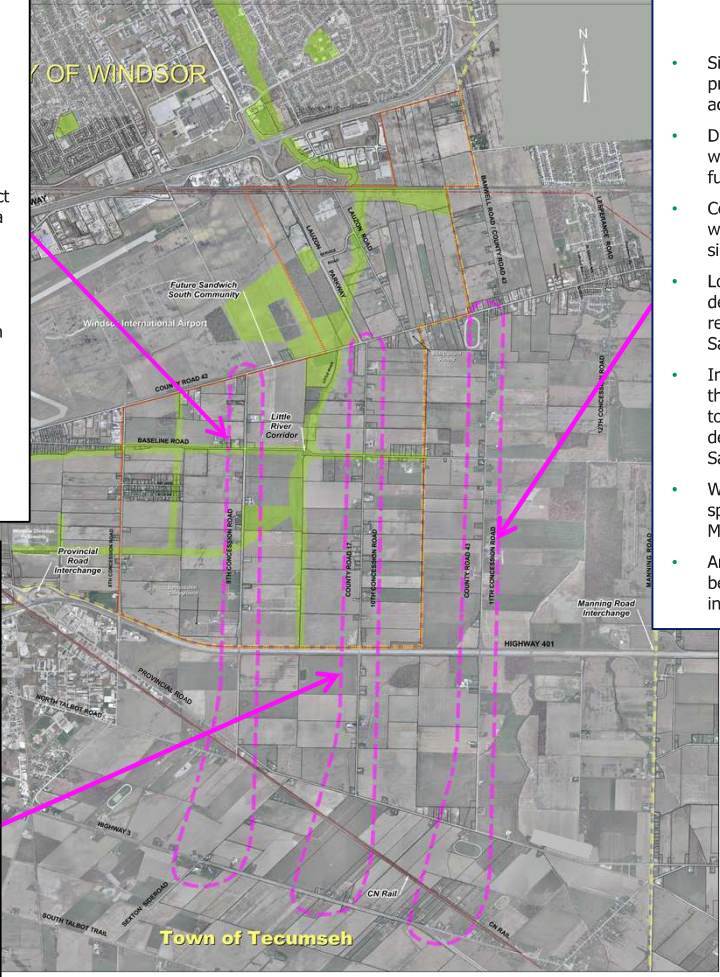
Group 1: Optimize Existing Transportation Networks	Group 2: Improved or New Transit + Group 1	Group 3: Improved or New Roads + Group 2
<p>Group 1 strategies on their own do not address all identified problems in the study area. They do represent innovative and effective ways of improving and getting the most out of what already exists, and an important foundation for improving the transportation system and helping to manage future congestion in a relatively cost effective and low impact manner.</p> <p>Group 1 will be carried forward for further consideration as a complimentary component of recommended solution.</p>	<p>Group 2 strategies cannot fully provide the transportation network required to address all of the identified transportation problems and opportunities. However, in conjunction with the Group 1 strategies, improved/new transit advances a balanced transportation system.</p> <p>Group 2 will be carried forward for further consideration as a complimentary component of recommended solution.</p>	<p>Group 3 strategies to improve existing roads or add new roads within the study area have the greatest potential to address all of the identified transportation problems and opportunities.</p> <p>Group 3 will be carried forward for further consideration as the primary component of recommended solution.</p>

- The findings of Stage 2 identified that **Group 3** has the greatest potential to address the identified transportation problems and opportunities and will be carried forward as the preferred transportation planning alternative.
- To provide the transportation network needed for the existing congestion and anticipated future growth, additional north-south linkage between E.C. Row Expressway and Highway 3 including a new interchange connection with Highway 401 is needed, as well as improvements to County Road 42 and the provision of an additional east-west linkage to support future development.

LAUZON PARKWAY EXTENSION ALTERNATIVE CORRIDOR ROUTES

Existing North-South Corridors

- For a north-south linkage, using existing surrounding roadways was considered as shown below:



9th Concession Road

- Significant impact on multiple existing property owners in terms of loss of access and property requirements.
- Displacement of an existing road which provides an arterial road function.
- Connection to E.C. Row Expressway north of County Road 42 would potentially impact the Windsor Airport lands. Would require a crossing of the Little River corridor.
- Improved access to Highway 401 to the south and E.C. Row Expressway to the north would be limited only to development on the west side of Sandwich South.
- Would not provide good interchange spacing to the Highway 401 / Provincial Road Interchange.
- An at-grade CN Rail crossing would be in very close proximity to Provincial Road intersection.

County Road 17

- Significant impact on multiple existing property owners in terms of loss of access and property requirements.
- Displacement of an existing road which provides an arterial road function.
- Provides a more central spine through the proposed future Sandwich South community.
- Development as part of Sandwich South would have better access to Highway 401 to the south and E.C. Row Expressway to the north.
- Sufficient interchange spacing to the adjacent Highway 401 Interchanges.
- An at-grade CN Rail crossing would be in close proximity to Provincial Road intersection.

**County Road 43
(11th Concession Road)**

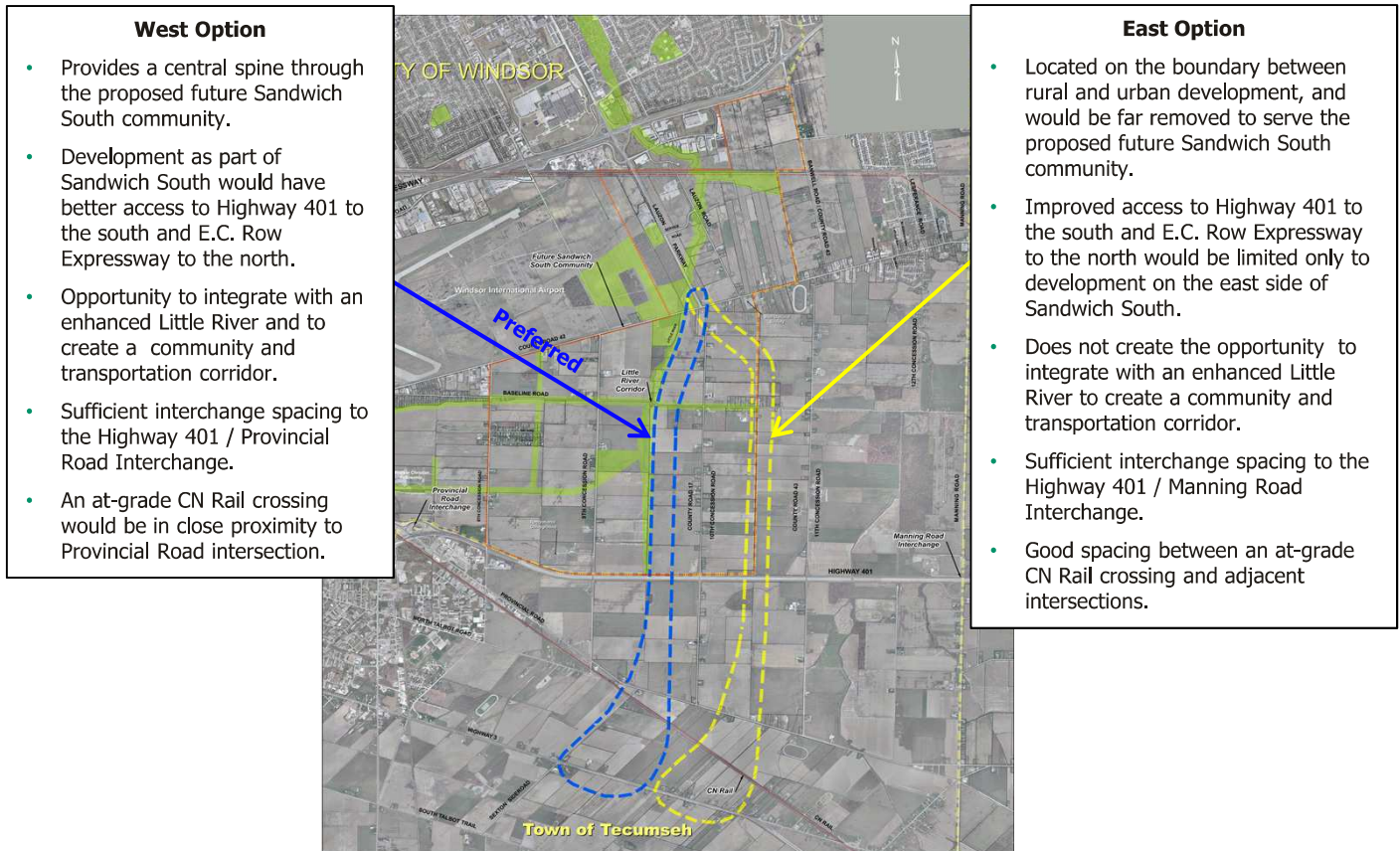
- Significant impact on multiple existing property owners in terms of loss of access and property requirements.
- Displacement of an existing road which provides an arterial road function.
- Connection to E.C. Row Expressway with County Road 42 would result in significant property requirements.
- Located outside of the urban development and would be far removed to serve the proposed future Sandwich South community.
- Improved access to Highway 401 to the south and E.C. Row Expressway to the north would be limited only to development on the east side of Sandwich South.
- Would not provide good interchange spacing to the Highway 401 / Manning Road Interchange.
- An at-grade CN Rail crossing would be in close proximity to Highway 3 intersection.

- For a north-south linkage, utilizing existing surrounding roadways is not preferred due to land constraints such as Windsor International Airport, Little River and existing residential / agricultural property, as well as, the inability to provide an effective transportation network that supports future development and traffic flows.
- Therefore, new corridor alternatives were considered. Although a new corridor will require new property, it can support the new economic development and improve the access for residents and business in East Windsor and neighbouring municipalities. In addition, existing property accesses along the existing roadways will not be affected and an existing arterial road will not be displaced.

LAUZON PARKWAY EXTENSION ALTERNATIVE CORRIDOR ROUTES

New North-South Corridors

- New north-south corridor route alternative were developed as shown below:



- The West Option is preferred as it addresses long term traffic needs, better serves future land use development and provides the opportunity to integrate with an enhanced Little River as a central community amenity.
- **Therefore, the preferred north-south linkage is to extend Lauzon Parkway south of County Road 42 and to utilize a new corridor just east of the Little River (between 9th Concession and 10th Concession) to connect to Highway 401 and Highway 3.**
- The roadway requirements such as road classification, number of lanes and active transportation facilities (e.g. sidewalk, bike lanes and multi-use paths) will be confirmed and presented at the next PIC.

COUNTY ROAD 42

- County Road 42 provides continuous connection between the City of Windsor, Town of Tecumseh and Town of Lakeshore.
- It provides the grid transportation system to support the new economic development and improve the access for residents and business in East Windsor and neighbouring municipalities.
- Based on the Transportation Needs Assessment, improvements to existing County Road 42 are required including widening and intersection improvements.
- Generally the improvements can fit within the existing right-of-way (ROW) as the existing ROW of County Road 42 varies from 26 m – 30 m.
- Therefore, only minimal property requirements may be needed along the existing roadway and at intersections.



These sections are discussed on the following panels.

Preliminary recommendations for County Road 42 will be confirmed and presented at the next PIC.

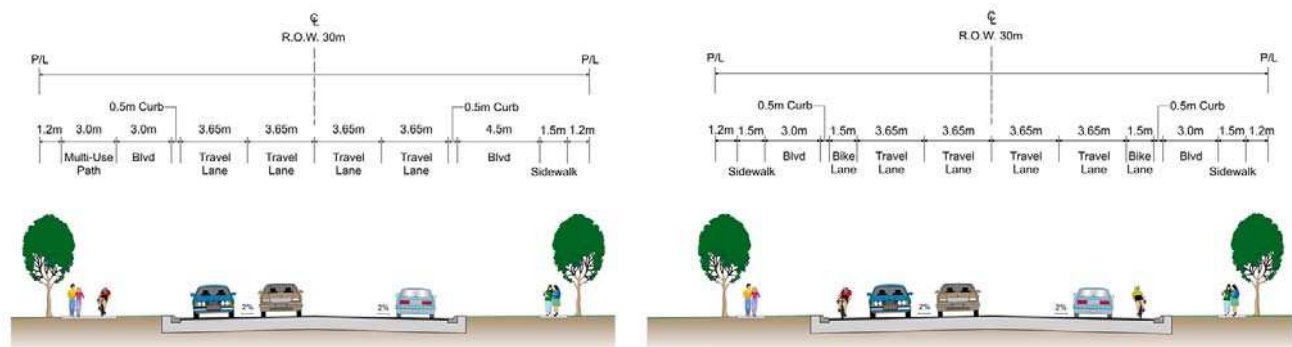
COUNTY ROAD 42

Walker Road to Manning Road (County Road 19)

- Based on preliminary assessment of anticipated future conditions, it is expected that County Road 42 will need to be widened from 2 basic lanes to 4 basic lanes with an urban cross-section between Walker Road and Manning Road (County Road 19). In addition, improvements at intersections are required.
- The City of Windsor *Bicycle Use Master Plan* (BUMP) was completed prior to the 'land transfer', bike lanes have been identified on this roadway west of Walker Road.
- Active transportation facilities (e.g. multi-use paths, bike lanes and sidewalks) will be considered for this section of the roadway (although the County of Essex's Draft *County Wide Active Transportation* (CWATS) does not identify any active transportation facilities on the roadway).



Example Cross-Sections



Preliminary recommendations for County Road 42 will be confirmed and presented at the next PIC.

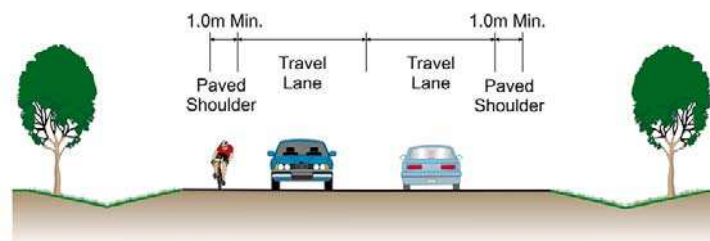
COUNTY ROAD 42

Manning Road (County Road 19) to Puce Road (County Road 25)

- Based on preliminary assessment of anticipated future conditions, it is expected that County Road 42 will not need to be widened between Manning Road (County Road 19) and Puce Road (County Road 25). Improvements to this section of the roadway can be provided through proper land use planning and local intersection improvements including appropriate signalization and provision of turn lanes.
- County of Essex has identified corridor protection (36 m ROW) for this section of roadway (*County Road 42 Corridor Protection Strategy*). The ROW requirements would be acquired as part of land use change or development approval.
- As part of the Draft CWATS, the County has identified paved shoulder bikeways along the roadway between County Road 21 and Patillo Road and will be considered as part of this study.



Example Cross-Section

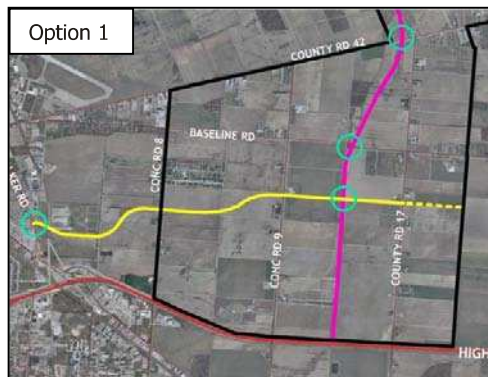


Preliminary recommendations for County Road 42 will be confirmed and presented at the next PIC.

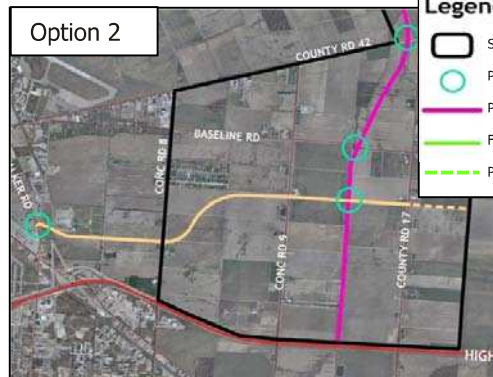
FUTURE EAST-WEST ARTERIAL ALTERNATIVE CORRIDOR ROUTES

Future East-West Arterial

- A new East/West Arterial is required to support the future development of the Sandwich South community and provide an effective grid transportation system for the area.
- The alignment of the Future East-West Arterial will be determined in conjunction with the development of the Sandwich South Secondary Plan Study. The future roadway will connect at the Walker Road intersection to County Road 17. In addition, ROW will be protected from County Road 17 to the City limits. Active transportation facilities (e.g. multi-use paths, bike lanes and sidewalks) will be considered for inclusion on this roadway. The following options will be considered:



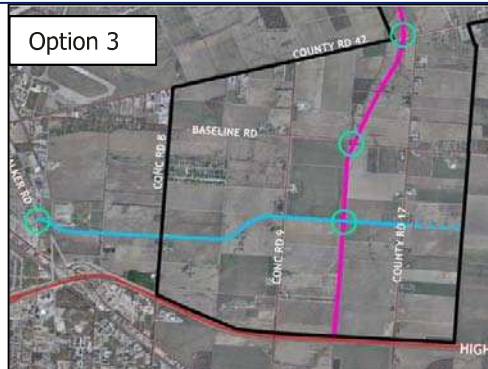
- Option 1**
- Intersection at the Proposed Preferred Lauzon Parkway Extension would be centrally located within the Sandwich South community.
 - Sufficient interchange spacing to the Proposed Highway 401 / Lauzon Parkway Extension Interchange.
 - Bisects 3 properties.
 - Direct impact to the building on 1 property.
 - Close proximity to the existing Ray Road / Joy Road residential area.



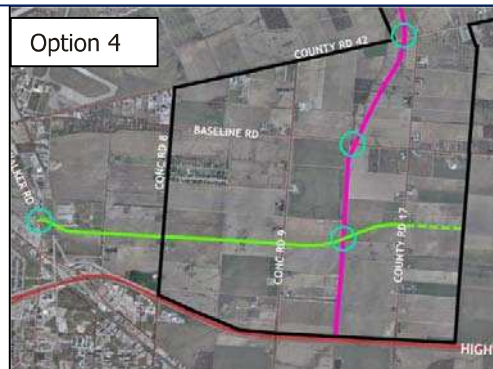
- Option 2**
- Intersection at the Proposed Preferred Lauzon Parkway Extension would be centrally located within the Sandwich South community.
 - Sufficient interchange spacing to the Proposed Highway 401 / Lauzon Parkway Extension Interchange.
 - Bisects 2 properties.
 - Direct impact to the building on 1 property.
 - Close proximity to the existing Ray Road / Joy Road residential area.

Legend

- Sandwich South Secondary Plan Study Area
- Proposed Intersection
- Proposed Preferred Lauzon Parkway Extension
- Future East-West Arterial Option
- Proposed Right-of-Way Protection



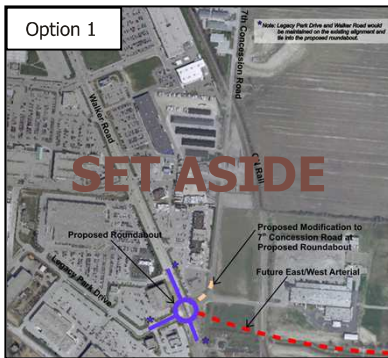
- Option 3**
- Intersection at the Proposed Preferred Lauzon Parkway Extension would be located further south within the Sandwich South community.
 - Sufficient interchange spacing to the Proposed Highway 401 / Lauzon Parkway Extension Interchange. However, may limit the potential of a service road intersection, which would provide access to proposed future employment lands along Highway 401, at the Proposed Lauzon Parkway Extension between the proposed interchange and the East-West Arterial intersection due to required intersection/interchange spacing.
 - Bisects 1 property.



- Option 4**
- Intersection at the Proposed Preferred Lauzon Parkway Extension would be located further south within the Sandwich South community. In addition, the alignment of the East-West arterial results in a skewed intersection.
 - Sufficient interchange spacing to the Proposed Highway 401 / Lauzon Parkway Extension Interchange. However, may limit the potential of a service road intersection, which would provide access to proposed future employment lands along Highway 401, at the Proposed Lauzon Parkway Extension between the proposed interchange and the East-West Arterial intersection due to required intersection/interchange spacing.
 - Bisects 2 properties

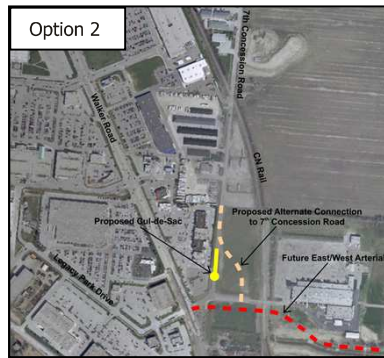
FUTURE EAST-WEST ARTERIAL WEST END CONNECTION ALTERNATIVES

- The connection of the Future East-West Arterial to the existing Walker Road / 7th Concession Road / Legacy Park Drive intersection is complex. To improve the safety and operations of this intersection, consideration has been given to:
 - Keep 7th Concession Road, Legacy Park Drive and the Future East-West Arterial at the existing Walker Road intersection (Option 1).
 - Remove 7th Concession Road from existing Walker Road intersection and connect to Future East-West Arterial (Option 2).
 - Remove 7th Concession Road from existing Walker Road intersection and connect to Walker Road at a different location (Option 3 and Option 4).
 - Remove 7th Concession Road and cul-de-sac at existing Walker Road intersection (Option 5).



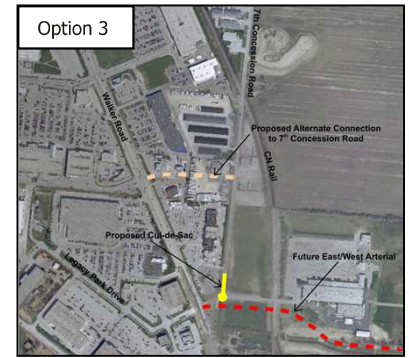
Roundabout

Option 1 – Set aside due to property requirements to accommodate the roundabout, intersection operation concerns due to 5 roads approaching the roundabout and the high truck volume on Walker Road required to manoeuvre through the roundabout.



7th Concession Road connecting to Future East-West Arterial

Option 2 – **Carried Forward** for Further Consideration



7th Concession Road connecting to Walker Road (South Option)

Option 3 – **Carried Forward** for Further Consideration



7th Concession Road connecting to Walker Road (North Option)

Option 4 – Set aside due to undesirable safe operations (Proximity of the Potential Alternate Connection at 7th Concession Road to CN Rail)



7th Concession Road Cul-De-Sac

Option 5 – **Carried Forward** for Further Consideration

A preferred option will be determined during the next phase and presented at the next PIC.

ENVIRONMENTAL ASSESSMENT EVALUATION CRITERIA

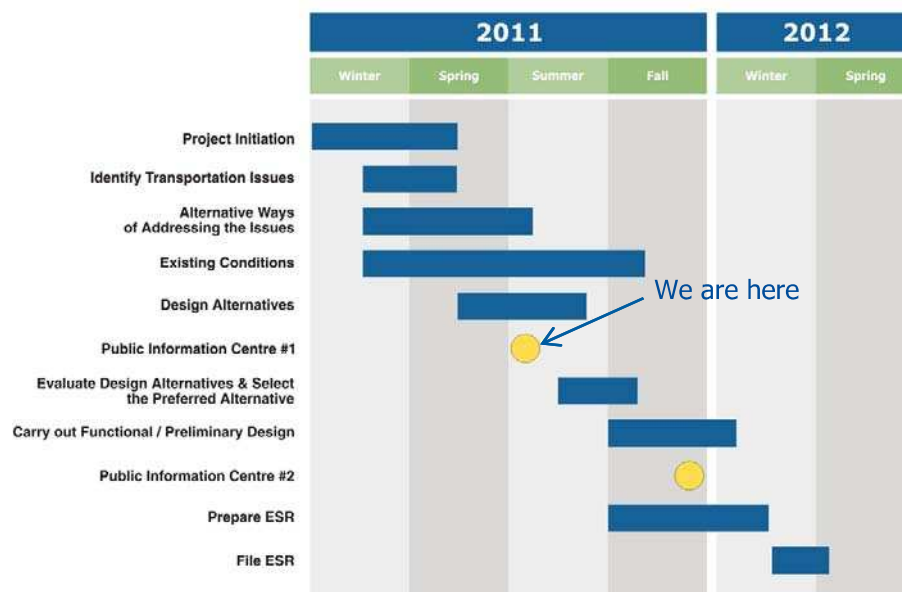
To provide an objective and transparent approach for identifying the preferred alternative, the Project Team will review and assess the alternatives using a comprehensive set of evaluation criteria based on the following categories:

- socio-economic environment:
 - existing residential uses
 - existing commercial/industrial uses
 - agricultural resources
 - future land uses
 - noise
 - pedestrian/cycling facilities
- cultural environment:
 - built heritage resources
 - cultural heritage landscapes
 - archaeological resources
- natural environment:
 - vegetation
 - aquatic habitat
 - wildlife
 - air quality
 - stormwater management
- transportation and engineering
 - transportation network efficiency
 - traffic operations and safety
 - utilities
- preliminary estimated cost

NEXT STEPS

Following this PIC, the Project Team will complete the following activities:

- Review and address all public input received at this PIC.
- Confirm study findings to date based on comments received.
- Continue with field investigations and data collection.
- Analyze, evaluate and determine the preferred design alternative.
- Carry out functional/preliminary design of the preferred alternative.
- Prepare for the next PIC (expected in the fall of 2011).



PLEASE COMPLETE A COMMENT SHEET



Would you like to be included in the study mailing list? Do you have any questions or comments regarding the study? Please let us know your thoughts by completing a Comment Sheet. Completed sheets can either be dropped in the boxes on the tables or submitted by mail, fax or email to any of the following Study Team members:

Mr. Michael Chiu, P. Eng.
Consultant Project Manager
McCormick Rankin Corporation
2655 North Sheridan Way, Suite 300
Mississauga, ON L5K 2P8
Toll Free: 1-877-562-7947
Phone: 905-823-8500
Fax: 905-823-8503
E-mail: lauzonparkwayea@mrc.ca

Ms. Jane Mustac, P.Eng.
Manager of Transportation Planning
County of Essex
360 Fairview Avenue West
Essex, ON N8M 1Y6
Phone: 519-776-6441 ext. 397
Fax: 519-776-4455
E-mail: jmustac@countyofessex.on.ca

Mr. Rakesh Shreewastav, P.Eng., AVS
Senior Project Engineer
Ministry of Transportation
Windsor Border Initiatives Implementation Group
Project Delivery Office
949 McDougall Avenue, Suite 200
Windsor, ON N9A 1L9
Phone: (519) 973-7367
Fax: (519) 973-7327
E-mail: rakesh.shreewastav@ontario.ca

Ms. Josette Eugeni, P.Eng.
Manager of Transportation Planning
City of Windsor
1266 McDougall Avenue
Windsor, ON N8X 3M7
Phone: 519-255-6418
Fax: 519-973-5476
E-mail: jeugeni@city.windsor.on.ca

Please provide all comments by August 5, 2011.

Additional project information is available on the study website at
www.lauzonparkwayea.ca

Thank You for Attending!



APPENDIX D
COMMENT SHEETS

Comment Sheet

Please provide your comments on any aspect of the study:

INSTALL BOUNDARIES @ MAXIMUMS & 42



Please place your comment sheet in the box provided, or submit by August 5, 2011 to any of the following:

Michael Chiu, P.Eng.
Consultant Project Manager
McCormick Rankin Corporation
2655 North Sheridan Way
Mississauga, ON L5K 2P8
Phone: (905) 823-8500
Fax: (905) 823-8500
Email: lauzonparkwayea@mrc.ca

Ms. Jane Mustac, P.Eng.
Manager of Transportation Planning
County of Essex
360 Fairview Avenue West
Essex, ON N8M 1Y6
Phone: 519-776-6441 ext. 397
Fax: 519-776-4455
E-mail: jmustac@countyofessex.on.ca

Rakesh Shreewastav, P.Eng., AVS
Senior Project Engineer
Ministry of Transportation
Windsor Border Initiatives Implementation Group
Project Delivery Office
949 McDougall Avenue, Suite 200
Windsor, ON N9A 1L9
Phone: (519) 973-7367
Fax: (519) 973-7327
Email: rakesh.shreewastav@ontario.ca

Ms. Josette Eugeni, P.Eng.
Manager of Transportation Planning
City of Windsor
1266 McDougall Avenue
Windsor, ON N8X 3M7
Phone: 519-255-6418
Fax: 519-973-5476
E-mail: jeugeni@city.windsor.on.ca

Thank you for your participation. Comments and information regarding this study are being collected in accordance with the *Freedom of Information and Protection of Privacy Act*, and solely for the purpose of conducting the environmental assessment. With the exception of personal information, all comments will become part of the public record.

Preferred Method of Correspondence: Regular Mail Email

Please Print:

Name: _____

Address: _____

Email: _____ Postal Code: _____





September 9, 2011



VIA email -



**RE: Lauzon Parkway Improvements Environmental Assessment
(Including Lauzon Parkway / County Road 42 /
Future East/West Arterial / Sandwich South Secondary Plan Study)
Public Information Centre #1
Our File: W.O. 3211012**



On behalf of the Ministry of Transportation, City of Windsor and County of Essex, thank you for attending the July 14, 2011 Public Information Centre #1 for the Lauzon Parkway Improvements Class Environmental Assessment Study.

The project team will take into consideration your comment as we proceed with the study. However it should be noted that an Environmental Assessment and Preliminary Design Report is in place for Manning Road between County Road 22 and Highway 3. The preliminary design for the Manning Road/County Road 42 intersection is a signalized intersection.

With the exception of personal information all comments will become part of the public record.

You will be notified of the second Public Information Centre which is tentatively scheduled to be held in the Fall of 2011. Should you have any further questions, comments or suggestions, please do not hesitate to contact the undersigned. McCormick Rankin Corporation has created a study website (www.lauzonparkwayea.ca). The website includes study information and is updated as information becomes available.

Yours very truly,

McCormick Rankin Corporation

Michael Chiu, P.Eng.
Consultant Project Manager

cc: R. Shreewastav, MTO
J. Mustac, County of Essex
J. Eugeni, City of Windsor
Global Transportation Engineering

2655 North Sheridan Way, Suite 300, Mississauga, Ontario, Canada L5K 2P8
t: 905.823.8500 | f: 905.823.8503 | e: mrc@mrc.ca | www.mrc.ca

**McCORMICK
RANKIN
CORPORATION**

Comment Sheet

Please provide your comments on any aspect of the study:

The 'WEST' preferred option for the extension of Lauzon Parkway is most practical.

I wish to be notified in the future once plans are finalized. Our company owns property on the south side of County Rd 42 at Lauzon Pkwy.

Please place your comment sheet in the box provided, or submit by August 5, 2011 to any of the following:

Michael Chiu, P.Eng.
Consultant Project Manager
McCormick Rankin Corporation
2655 North Sheridan Way
Mississauga, ON L5K 2P8
Phone: (905) 823-8500
Fax: (905) 823-8503
Email: lauzonparkwayea@mrc.ca

Ms. Jane Mustac, P.Eng.
Manager of Transportation Planning
County of Essex
360 Fairview Avenue West
Essex, ON N8M 1Y6
Phone: 519-776-6441 ext. 397
Fax: 519-776-4455
E-mail: jmustac@countyofessex.on.ca

Rakesh Shreewastav, P.Eng., AVS
Senior Project Engineer
Ministry of Transportation
Windsor Border Initiatives Implementation Group
Project Delivery Office
949 McDougall Avenue, Suite 200
Windsor, ON N9A 1L9
Phone: (519) 973-7367
Fax: (519) 973-7327
Email: rakesh.shreewastav@ontario.ca

Ms. Josette Eugeni, P.Eng.
Manager of Transportation Planning
City of Windsor
1266 McDougall Avenue
Windsor, ON N8X 3M7
Phone: 519-255-6418
Fax: 519-973-5476
E-mail: jeugeni@city.windsor.on.ca

Thank you for your participation. Comments and information regarding this study are being collected in accordance with the *Freedom of Information and Protection of Privacy Act*, and solely for the purpose of conducting the environmental assessment. With the exception of personal information, all comments will become part of the public record.

Preferred Method of Correspondence: Regular Mail Email

Please Print:

Name

Address

Email





September 9, 2011



**RE: Lauzon Parkway Improvements Environmental Assessment
(Including Lauzon Parkway / County Road 42 /
Future East/West Arterial / Sandwich South Secondary Plan Study)
Public Information Centre #1
Our File: W.O. 3211012**



On behalf of the Ministry of Transportation, City of Windsor and County of Essex, thank you for attending the July 14, 2011 Public Information Centre #1 for the Lauzon Parkway Improvements Class Environmental Assessment Study.

The project team will take into consideration your comments as we proceed with the study.

You have been included on the project mailing list.

With the exception of personal information all comments will become part of the public record.

You will be notified of the second Public Information Centre which is tentatively scheduled to be held in the Fall of 2011. Should you have any further questions, comments or suggestions, please do not hesitate to contact the undersigned. McCormick Rankin Corporation has created a study website (www.lauzonparkwayea.ca). The website includes study information and is updated as information becomes available.

Yours very truly,
McCormick Rankin Corporation

Michael Chiu, P.Eng.
Consultant Project Manager
cc: R. Shreewastav, MTO
J. Mustac, County of Essex
J. Eugeni, City of Windsor

**McCORMICK
RANKIN
CORPORATION**

Global Transportation Engineering

2655 North Sheridan Way, Suite 300, Mississauga, Ontario, Canada L5K 2P8
t: 905.823.8500 | f: 905.823.8503 | e: mrc@mrc.ca | www.mrc.ca

A member of  **MMM GROUP**

Comment Sheet

Please provide your comments on any aspect of the study:

I live on Highway 3 so I'm happy to see that the Lauzon Parkway will be extended to Highway 3

The information presented on the charts was quite clear. The ramifications of the various options were very interesting.

Please place your comment sheet in the box provided, or submit by August 5, 2011 to any of the following:

Michael Chiu, P.Eng.
Consultant Project Manager
McCormick Rankin Corporation
2655 North Sheridan Way
Mississauga, ON L5K 2P8
Phone: (905) 823-8500
Fax: (905) 823-8503
Email: lauzonparkwayea@mrc.ca

Ms. Jane Mustac, P.Eng.
Manager of Transportation Planning
County of Essex
360 Fairview Avenue West
Essex, ON N8M 1Y6
Phone: 519-776-6441 ext. 397
Fax: 519-776-4455
E-mail: jmustac@countyofessex.on.ca

Rakesh Shreewastav, P.Eng., AVS
Senior Project Engineer
Ministry of Transportation
Windsor Border Initiatives Implementation Group
Project Delivery Office
949 McDougall Avenue, Suite 200
Windsor, ON N9A 1L9
Phone: (519) 973-7367
Fax: (519) 973-7327
Email: rakesh.shreewastav@ontario.ca

Ms. Josette Eugeni, P.Eng.
Manager of Transportation Planning
City of Windsor
1266 McDougall Avenue
Windsor, ON N8X 3M7
Phone: 519-255-6418
Fax: 519-973-5476
E-mail: jeugeni@city.windsor.on.ca

Thank you for your participation. Comments and information regarding this study are being collected in accordance with the *Freedom of Information and Protection of Privacy Act*, and solely for the purpose of conducting the environmental assessment. With the exception of personal information, all comments will become part of the public record.

Preferred Method of Correspondence: Regular Mail Email

Please Print:

Name:

Address:

Email:



September 9, 2011

VIA [REDACTED]

**RE: Lauzon Parkway Improvements Environmental Assessment
(Including Lauzon Parkway / County Road 42 /
Future East/West Arterial / Sandwich South Secondary Plan Study)
Public Information Centre #1
Our File: W.O. 3211012**

[REDACTED]

On behalf of the Ministry of Transportation, City of Windsor and County of Essex, thank you for attending the July 14, 2011 Public Information Centre #1 for the Lauzon Parkway Improvements Class Environmental Assessment Study and providing feedback.

With the exception of personal information all comments will become part of the public record.

You will be notified of the second Public Information Centre which is tentatively scheduled to be held in the Fall of 2011. Should you have any further questions, comments or suggestions, please do not hesitate to contact the undersigned. McCormick Rankin Corporation has created a study website (www.lauzonparkwayea.ca). The website includes study information and is updated as information becomes available.

Yours very truly,
McCormick Rankin Corporation

Michael Chiu, P.Eng.
Consultant Project Manager

cc: R. Shreewastav, MTO
J. Mustac, County of Essex
J. Eugeni, City of Windsor

**McCORMICK
RANKIN
CORPORATION**

Global Transportation Engineering

2655 North Sheridan Way, Suite 300, Mississauga, Ontario, Canada L5K 2P8
t: 905.823.8500 | f: 905.823.8503 | e: mrc@mrc.ca | www.mrc.ca

A member of  **MMM GROUP**

Comment Sheet

Please provide your comments on any aspect of the study:

There is a dire need to prohibit engine brakes between Manning & Pulce Rd on County Rd 42.

The traffic light addition @ this intersection has caused an enormous amount of braking as the corridor between Manning & Patillo is a straight-a-way

Transports have a runway to get up to 100 km/hr without interruption up to Patillo.

This has caused a lot of noise pollution in the area.

Please place your comment sheet in the box provided, or submit by August 5, 2011 to any of the following:

Michael Chiu, P.Eng.
Consultant Project Manager
McCormick Rankin Corporation
2655 North Sheridan Way
Mississauga, ON L5K 2P8
Phone: (905) 823-8500
Fax: (905) 823-8503
Email: lauzonparkwayea@mrc.ca

Ms. Jane Mustac, P.Eng.
Manager of Transportation Planning
County of Essex
360 Fairview Avenue West
Essex, ON N8M 1Y6
Phone: 519-776-6441 ext. 397
Fax: 519-776-4455
E-mail: jmustac@countyofessex.on.ca

Rakesh Shreewastav, P.Eng., AVS
Senior Project Engineer
Ministry of Transportation
Windsor Border Initiatives Implementation Group
Project Delivery Office
949 McDougall Avenue, Suite 200
Windsor, ON N9A 1L9
Phone: (519) 973-7367
Fax: (519) 973-7327

Email: rakesh.shreewastav@ontario.ca
Ms. Josette Eugeni, P.Eng.
Manager of Transportation Planning
City of Windsor
1266 McDougall Avenue
Windsor, ON N8X 3M7
Phone: 519-255-6418
Fax: 519-973-5476
E-mail: jeugeni@city.windsor.on.ca

Thank you for your participation. Comments and information regarding this study are being collected in accordance with the *Freedom of Information and Protection of Privacy Act*, and solely for the purpose of conducting the environmental assessment. With the exception of personal information, all comments will become part of the public record.

Preferred Method of Correspondence: Regular Mail Email

Please Print:

Name:

Address:

Email:



September 9, 2011



**RE: Lauzon Parkway Improvements Environmental Assessment
(Including Lauzon Parkway / County Road 42 /
Future East/West Arterial / Sandwich South Secondary Plan Study)
Public Information Centre #1
Our File: W.O. 3211012**

Dear Sir/Madam:

On behalf of the Ministry of Transportation, City of Windsor and County of Essex, thank you for attending the July 14, 2011 Public Information Centre #1 for the Lauzon Parkway Improvements Class Environmental Assessment Study.

Your comments on current traffic conditions have been forwarded to the County of Essex for their consideration. As part of this study we will be examining measures to improve the free flow of traffic in a safe and efficient manner.

With the exception of personal information all comments will become part of the public record.

You will be notified of the second Public Information Centre which is tentatively scheduled to be held in the Fall of 2011. Should you have any further questions, comments or suggestions, please do not hesitate to contact the undersigned. McCormick Rankin Corporation has created a study website (www.lauzonparkwayea.ca). The website includes study information and is updated as information becomes available.

Yours very truly,
McCormick Rankin Corporation

A handwritten signature in black ink, reading "M. Chiu", is positioned above the printed name of the signatory.

Michael Chiu, P.Eng.
Consultant Project Manager

cc: R. Shreewastav, MTO
J. Mustac, County of Essex
J. Eugeni, City of Windsor

**McCORMICK
RANKIN
CORPORATION**

Global Transportation Engineering

2655 North Sheridan Way, Suite 300, Mississauga, Ontario, Canada L5K 2P8
t: 905.823.8500 | f: 905.823.8503 | e: mrc@mrc.ca | www.mrc.ca

A member of  **MMM GROUP**

Comment Sheet

Please provide your comments on any aspect of the study:

I AM REPRESENTING THE CONGREGATION AT WINDSOR
CHRISTIAN FELLOWSHIP. WE PRESENTLY HAVE AN OFFER
ON OUR 4.5 ACRES ON 7TH CON. (NORTH OF OUR PRIVATE
DRIVE). THE OFFER IS \$1,565,000. ~~IF~~ A CUL-DE-SAC
AT 7TH WOULD KILL THIS DEAL. IN ORDER TO
CONTINUE THE MANDATES OF WCF, IT IS CRUCIAL TO US
THAT 7TH NOT BE CUL-DE-SACED

After understood through
our conversation
- no need to reply to this
sent reply to my e-mail.

Please place your comment sheet in the box provided, or submit by August 5, 2011 to any of the following:

Michael Chiu, P.Eng.
Consultant Project Manager
McCormick Rankin Corporation
2655 North Sheridan Way
Mississauga, ON L5K 2P8
Phone: (905) 823-8500
Fax: (905) 823-8503
Email: lauonparkwayea@mrc.ca

Ms. Jane Mustac, P.Eng.
Manager of Transportation Planning
County of Essex
360 Fairview Avenue West
Essex, ON N8M 1Y6
Phone: 519-776-6441 ext. 397
Fax: 519-776-4455
E-mail: jmustac@countyofessex.on.ca

Rakesh Shreewastav, P.Eng., AVS
Senior Project Engineer
Ministry of Transportation
Windsor Border Initiatives Implementation Group
Project Delivery Office
949 McDougall Avenue, Suite 200
Windsor, ON N9A 1L9
Phone: (519) 973-7367
Fax: (519) 973-7327
Email: rakesh.shreewastav@ontario.ca
Ms. Josette Eugeni, P.Eng.
Manager of Transportation Planning
City of Windsor
1266 McDougall Avenue
Windsor, ON N8X 3M7
Phone: 519-255-6418
Fax: 519-973-5476
E-mail: jeugeni@city.windsor.on.ca

Thank you for your participation. Comments and information regarding this study are being collected in accordance with the *Freedom of Information and Protection of Privacy Act*, and solely for the purpose of conducting the environmental assessment. With the exception of personal information, all comments will become part of the public record.

Preferred Method of Correspondence: Regular Mail Email

Please Print:

Name: _____

Address: _____

Email: _____

Postal Code: _____



Comment Sheet

Please provide your comments on any aspect of the study:

ON THE EAST WEST ARTERIAL
CONNECTION TO WALKER Rd
OPTION 2 & 3 SHOULD BE COMBINED



Please place your comment sheet in the box provided, or submit by August 5, 2011 to any of the following:

Michael Chiu, P.Eng.
Consultant Project Manager
McCormick Rankin Corporation
2655 North Sheridan Way
Mississauga, ON L5K 2P8
Phone: (905) 823-8500
Fax: (905) 823-8503
Email: lauzonparkwayea@mrc.ca

Ms. Jane Mustac, P.Eng.
Manager of Transportation Planning
County of Essex
360 Fairview Avenue West
Essex, ON N8M 1Y6
Phone: 519-776-6441 ext. 397
Fax: 519-776-4455
E-mail: jmustac@countyofessex.on.ca

Rakesh Shreevastav, P.Eng., AVS
Senior Project Engineer
Ministry of Transportation
Windsor Border Initiatives Implementation Group
Project Delivery Office
949 McDougall Avenue, Suite 200
Windsor, ON N9A 1L9
Phone: (519) 973-7367
Fax: (519) 973-7327
Email: rakesh.shreevastav@ontario.ca

Ms. Josette Eugeni, P.Eng.
Manager of Transportation Planning
City of Windsor
1266 McDougall Avenue
Windsor, ON N8X 3M7
Phone: 519-255-6418
Fax: 519-973-5476
E-mail: jeugeni@city.windsor.on.ca

Thank you for your participation. Comments and information regarding this study are being collected in accordance with the *Freedom of Information and Protection of Privacy Act*, and solely for the purpose of conducting the environmental assessment. With the exception of personal information, all comments will become part of the public record.

Preferred Method of Correspondence: Regular Mail Email

Please
Name
Address
Email





September 9, 2011



VIA Email -



**RE: Lauzon Parkway Improvements Environmental Assessment
(Including Lauzon Parkway / County Road 42 /
Future East/West Arterial / Sandwich South Secondary Plan Study)
Public Information Centre #1
Our File: W.O. 3211012**



On behalf of the Ministry of Transportation, City of Windsor and County of Essex, thank you for attending the July 14, 2011 Public Information Centre #1 for the Lauzon Parkway Improvements Class Environmental Assessment Study.

The project team will take into consideration your comment as we proceed with the study.

With the exception of personal information all comments will become part of the public record.

You will be notified of the second Public Information Centre which is tentatively scheduled to be held in the Fall of 2011. Should you have any further questions, comments or suggestions, please do not hesitate to contact the undersigned. McCormick Rankin Corporation has created a study website (www.lauzonparkwayea.ca). The website includes study information and is updated as information becomes available.

Yours very truly,
McCormick Rankin Corporation

Michael Chiu, P.Eng.
Consultant Project Manager

cc: R. Shreewastav, MTO
J. Mustac, County of Essex
J. Eugeni, City of Windsor
Global Transportation Engineering

2655 North Sheridan Way, Suite 300, Mississauga, Ontario, Canada L5K 2P8
t: 905.823.8500 | f: 905.823.8503 | e: mrc@mrc.ca | www.mrc.ca

**McCORMICK
RANKIN
CORPORATION**

A member of  **MMM GROUP**

Comment Sheet

Please provide your comments on any aspect of the study:

We strongly suggest that the South end
of the Lauzon extension be kept as far
east as possible.

Preserving Sexton Sideroad as is, and
keeping the highway through fields and
behind the houses, instead of in front
of them, is a much better idea!

Please place your comment sheet in the box provided, or submit by August 5, 2011 to any of the following:

Michael Chiu, P.Eng.
Consultant Project Manager
McCormick Rankin Corporation
2655 North Sheridan Way
Mississauga, ON L5K 2P8
Phone: (905) 823-8500
Fax: (905) 823-8503
Email: lauzonparkwayea@mrc.ca

Ms. Jane Mustac, P.Eng.
Manager of Transportation Planning
County of Essex
360 Fairview Avenue West
Essex, ON N8M 1Y6
Phone: 519-776-6441 ext. 397
Fax: 519-776-4455
E-mail: jmustac@countyofessex.on.ca

Rakesh Shreewastav, P.Eng., AVS
Senior Project Engineer
Ministry of Transportation
Windsor Border Initiatives Implementation Group
Project Delivery Office
949 McDougall Avenue, Suite 200
Windsor, ON N9A 1L9
Phone: (519) 973-7367
Fax: (519) 973-7327
Email: rakesh.shreewastav@ontario.ca

Ms. Josette Eugeni, P.Eng.
Manager of Transportation Planning
City of Windsor
1266 McDougall Avenue
Windsor, ON N8X 3M7
Phone: 519-255-6418
Fax: 519-973-5476
E-mail: jeugeni@city.windsor.on.ca

Thank you for your participation. Comments and information regarding this study are being collected in accordance with the *Freedom of Information and Protection of Privacy Act*, and solely for the purpose of conducting the environmental assessment. With the exception of personal information, all comments will become part of the public record.

Preferred Method of Correspondence: Regular Mail Email

Please Print:

Name:

Address:

Email:



September 9, 2011



VIA Em 

**RE: Lauzon Parkway Improvements Environmental Assessment
(Including Lauzon Parkway / County Road 42 /
Future East/West Arterial / Sandwich South Secondary Plan Study)
Public Information Centre #1
Our File: W.O. 3211012**



On behalf of the Ministry of Transportation, City of Windsor and County of Essex, thank you for attending the July 14, 2011 Public Information Centre #1 for the Lauzon Parkway Improvements Class Environmental Assessment Study.

The project team will take into consideration your comment as we proceed with the study.

With the exception of personal information all comments will become part of the public record.

You will be notified of the second Public Information Centre which is tentatively scheduled to be held in the Fall of 2011. Should you have any further questions, comments or suggestions, please do not hesitate to contact the undersigned. McCormick Rankin Corporation has created a study website (www.lauzonparkwayea.ca). The website includes study information and is updated as information becomes available.

Yours very truly,
McCormick Rankin Corporation

Michael Chiu, P.Eng.
Consultant Project Manager

cc: R. Shreewastav, MTO
J. Mustac, County of Essex
J. Eugeni, City of Windsor

**McCORMICK
RANKIN
CORPORATION**

Global Transportation Engineering

2655 North Sheridan Way, Suite 300, Mississauga, Ontario, Canada L5K 2P8
t: 905.823.8500 | f: 905.823.8503 | e: mrc@mrc.ca | www.mrc.ca

A member of  **MMM GROUP**

Comment Sheet

Please provide your comments on any aspect of the study:

I would like to know who
is responsible for the traffic
light system at Lauzon
Parkway / County Rd. 42 / County Rd. #17?
Why can't we get these
lights ~~properly~~ properly
coordinated.

Please place your comment sheet in the box provided, or submit by August 5, 2011 to any of the following:

Michael Chiu, P.Eng.
Consultant Project Manager
McCormick Rankin Corporation
2655 North Sheridan Way
Mississauga, ON L5K 2P8
Phone: (905) 823-8500
Fax: (905) 823-8503
Email: lauzonparkwayea@mrc.ca

Ms. Jane Mustac, P.Eng.
Manager of Transportation Planning
County of Essex
360 Fairview Avenue West
Essex, ON N8M 1Y6
Phone: 519-776-6441 ext. 397
Fax: 519-776-4455
E-mail: jmustac@countyofessex.on.ca

Rakesh Shreewastav, P.Eng., AVS
Senior Project Engineer
Ministry of Transportation
Windsor Border Initiatives Implementation Group
Project Delivery Office
949 McDougall Avenue, Suite 200
Windsor, ON N9A 1L9
Phone: (519) 973-7367
Fax: (519) 973-7327
Email: rakesh.shreewastav@ontario.ca

Ms. Josette Eugeni, P.Eng.
Manager of Transportation Planning
City of Windsor
1266 McDougall Avenue
Windsor, ON N8X 3M7
Phone: 519-255-6418
Fax: 519-973-5476
E-mail: jeugeni@city.windsor.on.ca

Thank you for your participation. Comments and information regarding this study are being collected in accordance with the *Freedom of Information and Protection of Privacy Act*, and solely for the purpose of conducting the environmental assessment. With the exception of personal information, all comments will become part of the public record.

Preferred Method of Correspondence: Regular Mail Email

Please Print:

Name:

Address:

Email:



September 9, 2011

[REDACTED]

**RE: Lauzon Parkway Improvements Environmental Assessment
(Including Lauzon Parkway / County Road 42 /
Future East/West Arterial / Sandwich South Secondary Plan Study)
Public Information Centre #1
Our File: W.O. 3211012**

[REDACTED]

On behalf of the Ministry of Transportation, City of Windsor and County of Essex, thank you for attending the July 14, 2011 Public Information Centre #1 for the Lauzon Parkway Improvements Class Environmental Assessment Study.

The traffic light system at Lauzon Parkway/County Road 42/County Road 17 has been under the jurisdiction of the City of Windsor since the land transfer. The acquired signal system has been coordinated and is optimized for the existing geometric configuration. Your concern will be evaluated against the preferred alternative that has been identified.

With the exception of personal information all comments will become part of the public record.

You will be notified of the second Public Information Centre which is tentatively scheduled to be held in the Fall of 2011. Should you have any further questions, comments or suggestions, please do not hesitate to contact the undersigned. McCormick Rankin Corporation has created a study website (www.lauzonparkwayea.ca). The website includes study information and is updated as information becomes available.

Yours very truly,
McCormick Rankin Corporation

Michael Chiu, P.Eng.
Consultant Project Manager

cc: R. Shreewastav, MTO
J. Mustac, County of Essex
J. Eugeni, City of Windsor
Global Transportation Engineering

2655 North Sheridan Way, Suite 300, Mississauga, Ontario, Canada L5K 2P8
t: 905.823.8500 | f: 905.823.8503 | e: mrc@mrc.ca | www.mrc.ca

**McCORMICK
RANKIN
CORPORATION**

A member of  **MMM GROUP**

Please provide your comments on any aspect of the study:

Please call - he wants copies
of the PIC boards -
Call to direct to
website

Please place your comment sheet in the box provided, or submit by August 5, 2011 to any of the following:

Michael Chiu, P.Eng.
Consultant Project Manager
McCormick Rankin Corporation
2655 North Sheridan Way
Mississauga, ON L5K 2P8
Phone: (905) 823-8500
Fax: (905) 823-8503
Email: lauzonparkwayea@mrc.ca

Ms. Jane Mustac, P.Eng.
Manager of Transportation Planning
County of Essex
360 Fairview Avenue West
Essex, ON N8M 1Y6
Phone: 519-776-6441 ext. 397
Fax: 519-776-4455
E-mail: jmustac@countyofessex.on.ca

Rakesh Shreewastav, P.Eng., AVS
Senior Project Engineer
Ministry of Transportation
Windsor Border Initiatives Implementation Group
Project Delivery Office
949 McDougall Avenue, Suite 200
Windsor, ON N9A 1L9
Phone: (519) 973-7367
Fax: (519) 973-7327
Email: rakesh.shreewastav@ontario.ca

Ms. Josette Eugeni, P.Eng.
Manager of Transportation Planning
City of Windsor
1266 McDougall Avenue
Windsor, ON N8X 3M7
Phone: 519-255-6418
Fax: 519-973-5476
E-mail: jeugeni@city.windsor.on.ca

Thank you for your participation. Comments and information regarding this study are being collected in accordance with the *Freedom of Information and Protection of Privacy Act*, and solely for the purpose of conducting the environmental assessment. With the exception of personal information, all comments will become part of the public record.

Preferred Method of Correspondence: Regular Mail Email

Please Print

Name:

Address:

Email:

Jay Goldberg

From: Leslie Green
Sent: July 29, 2011 9:26 AM
To: [REDACTED]
Cc: Michael Chiu; rakesh.shreewastav@ontario.ca; 'Felker, Bob (MTO)' (Bob.Felker@ontario.ca); 'Eugeni, Josette' (jeugeni@city.windsor.on.ca); 'Jane Mustac' (jmustac@countyofessex.on.ca)
Subject: Lauzon Parkway Improvements Class EA PIC #1

[REDACTED]

Thank you for attending the July 14, 2011 Public Information Centre (PIC) #1 for the Lauzon Parkway Improvements Class Environmental Assessment Study.

The displays presented at the PIC are available on the "Consultation" page of the project website (www.lauzonparkwayea.ca).

You will be notified of the second Public Information Centre which is tentatively scheduled to be held in the Fall of 2011. Should you have any further questions, comments or suggestions, please do not hesitate to contact us.

Sincerely,
Lauzon Parkway Project Team

Leslie Green, P.Eng.
McCormick Rankin Corporation | A member of MMM Group
2655 North Sheridan Way, Suite 300
Mississauga, Ontario
L5K 2P8
Phone: (905) 823-8500
Fax: (905) 823-8503

Comment Sheet

Please provide your comments on any aspect of the study:

CR 42 WILL BECOME A MAIN
EAST WEST ROUTE. PLANS
SHOULD BE TO EITHER MAKE IT
A 6 LANE HIGHWAY OR CITY ROAD
OR AS A MINIMUM 4 LANE WITH
SPACE TO EXPAND TO 6 LANES. IF
EC ROW IS NOT EXPANDED TO
6 LANES THEN 42 S HOULD
BE 6 LANES AS A MIN. -

CAN ECROW BE 6 LANES THROUGH
TECOMSEH??

- AS A MEMBER OF LREG I WOULD
LIKE IF POSSIBLE THE LITTLE RIVER
BE REVERTED TO THE OLD
HISTORICAL CHANNEL.

- ALL CONSTRUCTION SHOULD FOLLOW THE
NEW MOE STORMWATER GUIDELINES

- ALL FARMS IN STUDY PLANS SHOULD BE ENCOURAGED
TO FOLLOW BEST PRACTICE FOR STORM DRAINAGE

Please place your comment sheet in the box provided, or submit by August 5, 2011 to any of the following:

Michael Chiu, P.Eng.
Consultant Project Manager
McCormick Rankin Corporation
2655 North Sheridan Way
Mississauga, ON L5K 2P8
Phone: (905) 823-8500
Fax: (905) 823-8503
Email: lauzonparkwayea@mrc.ca

Ms. Jane Mustac, P.Eng.
Manager of Transportation Planning
County of Essex
360 Fairview Avenue West
Essex, ON N8M 1Y6
Phone: 519-776-6441 ext. 397
Fax: 519-776-4455
E-mail: jmustac@countyofessex.on.ca

Rakesh Shreewastav, P.Eng., AVS
Senior Project Engineer
Ministry of Transportation
Windsor Border Initiatives Implementation Group
Project Delivery Office
949 McDougall Avenue, Suite 200
Windsor, ON N9A 1L9
Phone: (519) 973-7367
Fax: (519) 973-7327
Email: rakesh.shreewastav@ontario.ca

Ms. Josette Eugeni, P.Eng.
Manager of Transportation Planning
City of Windsor
1266 McDougall Avenue
Windsor, ON N8X 3M7
Phone: 519-255-6418
Fax: 519-973-5476
E-mail: jeugeni@city.windsor.on.ca

Thank you for your participation. Comments and information regarding this study are being collected in accordance with the Freedom of Information and Protection of Privacy Act, and solely for the purpose of conducting the environmental assessment. With the exception of personal information, all comments will become part of the public record.

Preferred Method of Correspondence: Regular Mail Email

Please Print

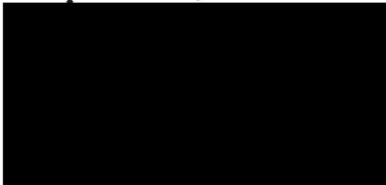
Name:

Address:

Email:



September 9, 2011



VIA email



**RE: Lauzon Parkway Improvements Environmental Assessment
(Including Lauzon Parkway / County Road 42 /
Future East/West Arterial / Sandwich South Secondary Plan Study)
Public Information Centre #1
Our File: W.O. 3211012**



On behalf of the Ministry of Transportation (MTO), City of Windsor and County of Essex, thank you for attending the July 14, 2011 Public Information Centre #1 for the Lauzon Parkway Improvements Class Environmental Assessment Study.

The project team will take into consideration your comment as we proceed with the study.

Based on the preliminary transportation needs assessment for this study, improvements to existing County Road 42 are required including widening and intersection improvements. It is expected that County Road 42 will need to be widened from 2 basic lanes to 4 basic lanes with an urban cross-section (curb and gutter) between Walker Road and Manning Road (County Road 19). In addition, improvements at intersections are required. Based on future traffic projections, it is expected that County Road 42 will not need to be widened between Manning Road (County Road 19) and Puce Road (County Road 25). Improvements to this section of the roadway can be provided through proper land use planning and local intersection improvements including appropriate signalization and provision of turn lanes.

Widening E.C. Row Expressway will be subject to a future Municipal Class Environmental Assessment and corresponding budget allocation by the City of Windsor.

The stormwater management component of this study will be completed in accordance with the MOE Stormwater Management Planning and Design Manual, MTO Drainage Manual and Drainage Management Technical Guidelines, as well as, all other applicable agency regulations and guidelines.

With the exception of personal information all comments will become part of the public record.



September 9, 2011

Page 2

You will be notified of the second Public Information Centre which is tentatively scheduled to be held in the Fall of 2011. Should you have any further questions, comments or suggestions, please do not hesitate to contact the undersigned. McCormick Rankin Corporation has created a study website (www.lauzonparkwayea.ca). The website includes study information and is updated as information becomes available.

Yours very truly,
McCormick Rankin Corporation

A handwritten signature in black ink that reads 'M. Chiu'. The signature is written in a cursive, flowing style.

Michael Chiu, P.Eng.
Consultant Project Manager

cc: R. Shreewastav, MTO
J. Mustac, County of Essex
J. Eugeni, City of Windsor

Jay Goldberg

From: Lauzon Parkway EA <lauzonparkwayea@mrc.ca>
Sent: August-25-11 3:09 PM
To: [REDACTED]
Subject: RE: Lauzon Parkway EA

Please be advised there are no vacancies for this project. Thank you for your inquiry.

Sincerely,
Lauzon Parkway Project Team

-----Original Message-----

From: adrian [<mailto:playstation56@live.ca>]
Sent: August-24-11 5:27 PM
To: Leslie Green
Subject: Lauzon Parkway EA

You have received a message regarding Lauzon Parkway EA. Message details are as follows:

[REDACTED]

City:
Province:
Postal Code:
Message:
Were am i able to put in a resume for this 3 year project

Jay Goldberg

From: Bill Balazs <bbalazs452@hotmail.com>
Sent: May-17-12 12:28 PM
To: Heather Templeton
Cc: Michael Chiu; jim@meridianplan.ca; mclement@city.windsor.on.ca; rakesh.shreewastav@ontario.ca; bob.felker@ontario.ca; jeugeni@city.windsor.on.ca; jmustac@countyofessex.on.ca; salmcc@netscape.net; Gillian Thompson
Subject: RE: Lauzon Parkway Improvements Class EA Study - Public Information Centre #1 (July 14/11)

Thank you for the up date.
William F. Balazs

From: HTempleton@mrc.ca
To: bbalazs452@hotmail.com
CC: MChiu@mrc.ca; jim@meridianplan.ca; mclement@city.windsor.on.ca; Rakesh.Shreewastav@ontario.ca; Bob.Felker@ontario.ca; jeugeni@city.windsor.on.ca; jmustac@countyofessex.on.ca; salmcc@netscape.net; GThompson@ecoplans.com
Subject: FW: Lauzon Parkway Improvements Class EA Study - Public Information Centre #1 (July 14/11)
Date: Thu, 17 May 2012 00:17:00 +0000

Mr. Balazs,

We sincerely apologize for the delay in responding to your email.

The study team is currently assessing and evaluating the alternatives presented at Public Information Centre 1 (PIC 1) and preparing the preliminary design of the preferred alternative, which will be presented at PIC 2. You will be notified in advance of PIC 2, which is planned for later this year.

In response to your comments and questions regarding your lands and the proposed Sandwich South Secondary Plan, the City of Windsor will provide a more detailed response to you separately.

Should you have any further questions, comments or suggestions, please do not hesitate to contact us. McCormick Rankin Corporation has created a study website (www.lauzonparkwayea.ca). The website includes study information and is updated as information becomes available. With the exception of personal information all comments will become part of the public record.

Heather Templeton
on behalf the Lauzon Parkway Project Team

Heather Templeton, P.Eng.

Project Engineer
Associate
Transportation Planning

McCormick Rankin | A member of **MMM Group**
t: 905.823.8500 x1378 | f: 905.823.8503

From: Bill Balazs [<mailto:bbalazs452@hotmail.com>]
Sent: May-11-12 3:23 PM
To: 'Bill Balazs'; Leslie Green
Cc: "Jim Dymont"; salmcc@netscape.net; Gillian Thompson; mclement@city.windsor.on.ca;

rakesh.shreewastav@ontario.ca; "Felker, Bob (MTO)"; "Eugeni, Josette"; "Jane Mustac"; Michael Chiu
Subject: RE: Lauzon Parkway Improvements Class EA Study - Public Information Centre #1 (July 14/11)

Follow up:

I have not heard any feed back as to Lauzon Parkway Improvement Study or received any notice as to the current status. If any party would please provide some feed back as it relates to this matter it would be greatly appreciated. As well we provided an attachment with reference to our notice to the City Of Windsor

Thank you

386823 Ontario Limited
William F. Balazs
President

From: Bill Balazs [<mailto:bbalazs452@hotmail.com>]
Sent: Wednesday, October 12, 2011 8:39 PM
To: 'Leslie Green'
Cc: 'Jim Dymont' (jim@meridianplan.ca); 'salmcc@netscape.net'; 'Gillian Thompson'; 'mclement@city.windsor.on.ca'; 'rakesh.shreewastav@ontario.ca'; 'Felker, Bob (MTO)' (Bob.Felker@ontario.ca); 'Eugeni, Josette' (jeugeni@city.windsor.on.ca); 'Jane Mustac' (jmustac@countyofessex.on.ca); 'Michael Chiu'
Subject: RE: Lauzon Parkway Improvements Class EA Study - Public Information Centre #1 (July 14/11)

October 12,2011

Re: Sandwich South Secondary Plan
Owner: 386823 Ontario Limited
Property: Part Lot 18, Conc. 9- Vacant Land on County Rd 42

The undersigned corporation is the registered owner of certain lands on the south side of County Road 42 immediately west of the extension of Little River.

We met with Mr. Hunt and Mr. Abbs from the Planning Department on October 3, 2007 expressing our concerns about our Official Plan designation and as a result of that meeting we communicated with the City of Windsor objecting to the designation of our lands as "open space". I am enclosing herewith a copy of that correspondence forwarded to the City of Windsor by my solicitor, Salem, McCullough & Gibson. As you can see from that correspondence, we were unfortunately put in a position where we did not receive notice of designation and it would have been our intention to appeal that open space designation in 2007. As well we do not understand the lands that are adjacent on west side of our property as future employment area and on the east side are also designated future urban area save except for what appears to be a very small sliver of land adjacent to the Little River.

We also noticed of the four options presented, they each showed adjustment of green space as presented for the Lauzon Parkway Improvements and therefore will expect our lands to show a change similar to adjacent lands on the west and east.

Again, we wish to express our objection if we do receive a review with changes being recommended that our property has changed from Green Space/ Open Space and would be similar to our adjacent lands on the west and east.

Similarly, we wish to file, on a formal basis our objection to the continuing designation of our lands as open space. All our reasons for objecting to this designation are set forth in the correspondence of October 15th, 2007 and if not changed in the secondary Plan, we would like to be on the record as objecting to that designation and we would also like to be notified of any future meetings so that we can make the appropriate representations.

383823 Ontario Ltd.
William F. Balazs
President

From: Leslie Green [<mailto:LGreen@mrc.ca>]

Sent: Friday, September 09, 2011 2:50 PM

To: bbalazs452@hotmail.com

Cc: 'Jim Dymont' (jim@meridianplan.ca); salmcc@netscape.net; Gillian Thompson; mclement@city.windsor.on.ca; rakesh.shreewastav@ontario.ca; 'Felker, Bob (MTO)' (Bob.Felker@ontario.ca); 'Eugeni, Josette' (jeugeni@city.windsor.on.ca); 'Jane Mustac' (jmustac@countyofessex.on.ca); Michael Chiu

Subject: Lauzon Parkway Improvements Class EA Study - Public Information Centre #1 (July 14/11)

Mr. Balazs,

Thank you for attending the July 14, 2011 Public Information Centre #1 for the Lauzon Parkway Improvements Class Environmental Assessment Study.

The designation of Open Space on your property was identified in the City's *Windsor Annexed Master Plan Study* and later included in the subsequent City of Windsor Official Plan Amendment (OPA) #60. As part of the Sandwich South Secondary Plan Study being completed for this study, the land designations will be reviewed and changes may be recommended. The review may or may not change the Open Space designation on your property. Under the Planning Act, any changes to land use designations will be reviewed and approved by City Council, and subject to appeal.

With the exception of personal information all comments will become part of the public record.

You will be notified of the second Public Information Centre which is tentatively scheduled to be held in the Fall of 2011. Should you have any further questions, comments or suggestions, please do not hesitate to contact us. McCormick Rankin Corporation has created a study website (www.lauzonparkwayea.ca). The website includes study information and is updated as information becomes available.

Thank you,
Leslie Green, P.Eng.
for
Michael Chiu, P.Eng.
Consultant Project Manager

From: Bill Balazs [<mailto:bbalazs452@hotmail.com>]

Sent: July-23-11 3:19 PM

To: salmcc@netscape.net; jim@meridianplan.ca; Gillian Thompson; mclement@city.windsor.on.ca

Subject:

Hi Phil

I am writing a summary of the information and workshop held on July 14th of 2011, with reference to the Lauzon Parkway Improvements. We were presented with 4 option and various proposed changes showing adjustment to Open Space allocations.

I clearly pointed out that my entire property west of Little River at County Road 42 was marked OpenSpace and the property on my west was marked employment and no portion of his property was allocated to open space or border separation along the west side of land Marked Heritage Space, while on my east as well as east of Little River had a small portion marked along the river as open space.

I stated that a similiar portion west of Little River be placed on my property for review.

They all agreed a review of the allocated openspace on all my property did not make scents and a similiar line along the west portion of Little River be shown on my portion of the property.

Please let me know if you hear from any of above.

Regards

William F. Balazs

Jay Goldberg

From: Felker, Bob (MTO) <Bob.Felker@ontario.ca>
Sent: June-29-11 5:12 PM
To: [REDACTED]
Cc: Shreewastav, Rakesh (MTO); Jane Mustac; jeugeni@city.windsor.on.ca; Michael Chiu; Leslie Green; Racicot, Lesley (MTO)
Subject: Lauzon Parkway Improvements

[REDACTED] was a pleasure speaking with you this afternoon. I understand that you are concerned about the existing level of traffic on Essex County Road 42, particularly truck traffic, and the impact on your use and enjoyment of your home on Cranbrook Crescent. As we discussed, the Environmental Assessment study now underway is looking at traffic conditions in a study area centred on the Lauzon Parkway section from E.C. Row Expressway to Essex County Road 42, and the possible extension to Highway 401, and further extension to Highway 3. Also under study, is the section of Essex County Road 42 from Walker Road in Windsor to Essex County Road 25 in the Town of Lakeshore. This would include potential improvements to the roadway between Shiff Drive and Lesperance Road where you live.

I've made note of your concerns with the level of traffic on Essex County Road 42 and the difficulties you experience in trying to make a left turn from Shiff Drive to Essex County Road 42. You also made mention that the installation of the traffic light at the Lesperance/ Essex County Road 42 intersection has made matters worse in terms of noise from trucks stopping and starting. Your other concerns have to do with the amount of development that has been occurring in the Town of Tecumseh, rumours about development plans for the Windsor International Airport, and the fact that your 14 year-old house has a large crack at the front of the building that could be the result of the increasing amount of traffic, in particular truck traffic that is passing near your home.

We also talked about the timing of the first Public Information Centre for this study. Public Information Centres (PIC) are scheduled at study milestones when the planning process is at a stage where input is needed in order to proceed. We have now reached a decision point where we want to present the transportation planning alternatives for review. We recognize that the summer months may not be a convenient time for everyone to attend the PIC in person, however, the displays to be presented at the PIC will be available on the "Consultation" page of the project website (www.lauzonparkwayea.ca) following the PIC. There will also be a second PIC in the fall and you are now on the list to be contacted and invited to attend that event.

In the meantime I encourage you to review the displays presented when they come available on the website and provide comments. Also please feel free to contact me to ask questions or pass along your concerns.

Thank you again for your interest and enjoy your vacation.

Best regards,

Bob Felker BES
Environmental Planner

Windsor Border Initiatives Implementation Group
Project Delivery Office
Ontario Ministry of Transportation
1st floor, 659 Exeter Road
London, Ontario
N6E 1L3

Tel: 519-873-4792
Fax: 519-873-4789
Cell: 519-317-3665
Email: Bob.Felker@ontario.ca

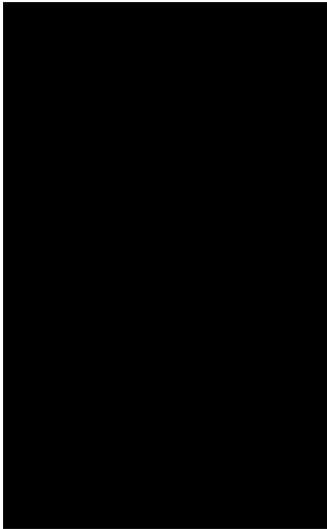
From

Sent: June 29, 2011 12:17 PM

To: lauzonparkwayea@mrc.ca; Shreewastav, Rakesh (MTO); jmustac@countyofessex.on.ca; jeugeni@city.windsor.on.ca; ttobin@tecumseh.ca

Subject: Lauzon Parkway Improvements

For several months I am trying to gather information pertaining to environmental assessment study for County Road 42. The website www.lauzonparkwayea.ca is not helpful at all as it does not contain any practical information on this subject and my emails to your offices so far have not been answered. Since I live in the Cranbrook Estates subdivision and the back of my property directly borders CR 42, this is of the great interest to me and my family. I understand that there will be public information meeting on July14, but why is this workshop scheduled in the middle of the busiest vacation period? Did anyone bother to check, that this date falls during Essex County's biggest employers (Chrysler, Ford, Integram, Dakkota, TRW, Allied) and their suppliers vacations shutdowns? Many of those affected people, like myself, will be out of the town during that period. Is there some kind of alternate plan to keep those people informed? This subject is of the great importance to us as the unrestrained heavy truck traffic keeps on growing, and quality of our lives deteriorates because of constant 24/7 noise and pollution and vibrations from heavy trucks causing cracks on the houses.



Jay Goldberg

From: Michael Chiu
Sent: July-12-11 7:55 AM
To: Sophie.Malcangi@cantire.com
Cc: Leslie Green; Eugeni, Josette (jeugeni@city.windsor.on.ca); Shreewastav, Rakesh (MTO) (Rakesh.Shreewastav@ontario.ca); Jane Mustac (jmustac@countyofessex.on.ca)
Subject: RE: Canadian Tire Property

Sophie,

The Canadian Tire property shown will not be affected by the options currently being considered for the Concession 7 realignment.

Michael Chiu, P.Eng.
Senior Project Manager
Transportation Planning
McCormick Rankin Corporation | A member of MMM Group
2655 North Sheridan Way, Suite 300 | Mississauga ON L5K 2P8
t: 905.823.8500 X 1243 | f: 905.823.8503 | e: mchiu@mrc

From: Sophie Malcangi [<mailto:Sophie.Malcangi@cantire.com>]
Sent: July-11-11 2:46 PM
To: Leslie Green
Subject: Canadian Tire Property

Hello Michael



Please see above Google image. Canadian Tire property is located on Walker Road as marked by the 'A'. Please let me know if our property will be affected by the Concession 7 realignment.

Thank you,



Sophie Malcangi
Development Coordinator-Central Region
Canadian Tire Real Estate Limited
2180 Yonge St., 15th Floor Toronto, ON, M4P 2V8
T: 416.487.6586 | F: 416.480.3990 | C: 416.819.6586
sophie.malcangi@cantire.com

Jay Goldberg

From: Leslie Green
Sent: July-20-11 8:39 AM
To: [REDACTED]
Cc: Michael Chiu; 'Eugeni, Josette' (jeugeni@city.windsor.on.ca); 'Jane Mustac' (jmustac@countyofessex.on.ca); rakesh.shreewastav@ontario.ca; 'Felker, Bob (MTO)' (Bob.Felker@ontario.ca)
Subject: RE: Lauzon Parkway EA

Thank you for your interest in the study. We have added you to our contact list to ensure that you are notified of upcoming events. As the study progresses, additional information will be posted on the project website at www.lauzonparkwayea.ca.

Sincerely,
Lauzon Parkway Project Team

-----Original Message-----

From: Sandy Stankov c/o Coco Group [<mailto:sstankov@cocogroup.com>]
Sent: July-14-11 9:26 AM
To: Leslie Green
Subject: Lauzon Parkway EA

You have received a message regarding Lauzon Parkway EA. Message details are as follows:

[REDACTED]
[REDACTED]
City: Windsor
Province: Ontario
Postal Code: N8N 2M1
Message:
Please add me to your contact list.
Thank You,
[REDACTED]

Jay Goldberg

From: Lauzon Parkway EA <lauzonparkwayea@mrc.ca>
Sent: July-07-11 1:48 PM
To: [REDACTED]
Cc: Michael Chiu; rakesh.shreewastav@ontario.ca; 'Felker, Bob (MTO)' (Bob.Felker@ontario.ca); 'Eugeni, Josette' (jeugeni@city.windsor.on.ca); 'Jane Mustac' (jmustac@countyofessex.on.ca)
Subject: RE: Lauzon Parkway
Attachments: Notice of Public Information Centre 1.pdf; Notice of Sandwich South Secondary Plan Public Workshop #2.pdf

[REDACTED]

Thank you for your interest in the study. With the exception of personal information, your comments will become part of the public record.

We have added you to our contact list to ensure that you are notified of upcoming events.

Please be advised that the first Public Information Centre (PIC) for the Lauzon Parkway Improvements Class Environmental Assessment Study (including Lauzon Parkway / County Road 42 / Future East-West Arterial / Sandwich South Secondary Plan Study) will be held as follows:

Public Information Centre #1

Date: Thursday, July 14, 2011

Place: Windsor Christian Fellowship
4490 7th Concession Road
Windsor, Ontario

Time: 4:00 p.m. to 8:00 p.m.
Brief Overview Presentations
at 5:00 p.m. and 6:30 p.m.

In addition, Workshop #2 for the Sandwich South Secondary Plan Study will be held separately at the same venue and day.


A copy of the PIC Notice and Workshop Notice are attached for your information. If you are not able to attend the PIC in person, the displays to be presented at the PIC will be available on the "Consultation" page of the project website (www.lauzonparkwayea.ca) following the PIC. There will also be a second PIC in the fall and you are on the list to be contacted and invited to attend that event.

The upcoming PIC is scheduled to present the study scope, existing conditions, need and justification, planning alternatives and preliminary generation of alternatives. This includes presenting preliminary alternative corridor routes for the Lauzon Parkway Extension.

Please feel free to contact us should you have any additional questions or wish to provide additional input.

Sincerely,
Lauzon Parkway Project Team

-----Original Message-----




Sent: July-06-11 12:17 PM

To: Leslie Green

Subject: Lauzon Parkway

Following my telephone conversation with Ms. Josette Eugeni, I would like to reiterate that extending Lauzon Parkway on Road 17 would force Baseline Road residents to be severed from Windsor's geographical boundaries. We would essentially have to drive to Tecumseh to go to Windsor. This would really be "adding insult to injury" since there was a "forced" sale of our area to Windsor several years ago.

Another serious concern is the proximity of the suggested extension of Lauzon Parkway to Baseline Road homes immediately east of Road 17. Are you prepared to construct a sound barrier wall in the Baseline Road area? We pay extremely high taxes in an area with no sidewalks, streetlights, no sewers, no library/community centres/bus services. The least you can do is treat us with respect, although we do not have much faith in this process as we have been through it before with the Town of Tecumseh.



Jay Goldberg

From: Leslie Green
Sent: July-05-11 3:00 PM
To: [REDACTED]
Subject: RE: Lauzon Parkway EA
Attachments: Notice of Sandwich South Secondary Plan Public Workshop #2.pdf; Notice of Public Information Centre 1.pdf

From: Lauzon Parkway EA [<mailto:lauzonparkwayea@mrc.ca>]
Sent: July-05-11 12:21 PM
[REDACTED]

Cc: Michael Chiu; 'Felker, Bob (MTO)' (Bob.Felker@ontario.ca); rakesh.shreewastav@ontario.ca; 'Eugeni, Josette' (jeugeni@city.windsor.on.ca); 'Jane Mustac' (jmustac@countyofessex.on.ca)
Subject: RE: Lauzon Parkway EA
[REDACTED]

You are included on our contact list and will be notified of upcoming events.

Please be advised that the first Public Information Centre (PIC) for the Lauzon Parkway Improvements Class Environmental Assessment Study (including Lauzon Parkway / County Road 42 / Future East-West Arterial / Sandwich South Secondary Plan Study) will be held as follows:

Public Information Centre #1

Date: Thursday, July 14, 2011
Place: Windsor Christian Fellowship
4490 7th Concession Road
Windsor, Ontario
Time: 4:00 p.m. to 8:00 p.m.
Brief Overview Presentations
at 5:00 p.m. and 6:30 p.m.

In addition, Workshop #2 for the Sandwich South Secondary Plan Study will be held separately at the same venue and day.

A copy of the PIC Notice and Workshop Notice are attached for your information. Please note that these notices were also mailed to you on June 29/11.

This study is a long term planning exercise intended to address existing and forecast traffic congestion issues and accommodate future development in the study area. It is too early in the process to speculate on specific outcomes. However, assuming a route is selected for the extension of Lauzon Parkway, once the environmental assessment requirements are met under Provincial and Federal law, the first step would be to identify the property requirements so that the corridor can be secured. There is no specified timeframe nor budgeting for construction at this time.

Please feel free to contact us should you have any additional questions or wish to provide additional input.

Sincerely,
Lauzon Parkway Project Team

From: [REDACTED]

Sent: June-27-11 9:57 AM

To: Leslie Green

Subject: Lauzon Parkway EA

You have received a message regarding Lauzon Parkway EA. Message details are as follows:

[REDACTED]

[REDACTED]

City: Windsor

Province: Ont.

[REDACTED]

Message:

I would like to be on the contact list, thank you.

Also: After the EA is completed for the Lauzon Parkway Extension and all the approvals are in place including appeals, if there are any, what will be the status of this extension.

Will there be tenders to have it built right away? or will it wait for development before it's built.

Thank You [REDACTED]

Jay Goldberg

From: Leslie Green
Sent: September-09-11 2:31 PM
To: [REDACTED]
Cc: rakesh.shreewastav@ontario.ca; 'Felker, Bob (MTO)' (Bob.Felker@ontario.ca); 'Eugeni, Josette' (jeugeni@city.windsor.on.ca); 'Jane Mustac' (jmustac@countyofessex.on.ca); Michael Chiu
Subject: RE: Lauzon Parkway EA

Good afternoon,

Based on the preliminary transportation needs assessment for this study, improvements to existing County Road 42 are required including widening and intersection improvements. It is expected that County Road 42 will need to be widened from 2 basic lanes to 4 basic lanes with an urban cross-section (curb and gutter) between Walker Road and Manning Road (County Road 19). In addition, improvements at intersections are required. Based on future traffic projections, it is expected that County Road 42 will not need to be widened between Manning Road (County Road 19) and Puce Road (County Road 25). Improvements to this section of the roadway can be provided through proper land use planning and local intersection improvements including appropriate signalization and provision of turn lanes.

As a major arterial, County Road 42 is expected to accommodate trucks. County Road 42 is currently a truck route within the City of Windsor from Walker Road to the east City Limits.

Generally the improvements to County Road 42 can fit within the existing right-of-way (ROW) as the existing ROW of County Road 42 varies from 26 m – 30 m. Therefore, only minimal property requirements may be needed along the existing roadway and at intersections.

With the exception of personal information all comments will become part of the public record.

You will be notified of the second Public Information Centre which is tentatively scheduled to be held in the Fall of 2011. Should you have any further questions, comments or suggestions, please do not hesitate to contact us. McCormick Rankin Corporation has created a study website (www.lauzonparkwayea.ca). The website includes study information and is updated as information becomes available.

Thank you,
Leslie Green, P.Eng.
for
Michael Chiu, P.Eng.
Consultant Project Manager

From: [REDACTED]
Sent: July-13-11 10:47 PM
To: Leslie Green
Subject: Lauzon Parkway EA

You have received a message regarding Lauzon Parkway EA. Message details are as follows:

Name [REDACTED]
[REDACTED]

City: Tecumseh

Province: Ontario

Postal Code:

Message:

in layman terms...are you planning on expanding County Road 42 from 2 lanes to 4 lanes?

My concern with this is that many of the trucks use County Road 42 to avoid the scales on the 401. If you expand to 4 lanes, this will encourage them to do so even more.

Another concern is that many of the houses and businesses are close to the road, if you expand, many of these buildings will have to be moved or eliminated.

Jay Goldberg

From: Leslie Green
Sent: July-15-11 8:43 AM
To: [REDACTED]
Cc: David Lukianow; Michael Chiu; rakesh.shreewastav@ontario.ca; 'Felker, Bob (MTO)' (Bob.Felker@ontario.ca); 'Jane Mustac' (jmustac@countyofessex.on.ca); 'Eugeni, Josette' (jeugeni@city.windsor.on.ca)
Subject: RE: Lauzon Parkway EA

Good morning [REDACTED]

Further to your email below, the Public Information Centre #1 Display Panels are now available on the "Consultation" page of the project website (www.lauzonparkwayea.ca).

Thank you,

Leslie Green
for Michael Chiu

-----Original Message-----
From: [REDACTED]
Sent: July-06-11 10:46 AM
To: Leslie Green
Cc: David Lukianow
Subject: Lauzon Parkway EA

Hello Michael,

Please include me on your distribution list for the Lauzon Parkway EA. I will be unavailable for the July 14 PIC. Please send me a link to the PIC material when it is released.

Regards

[REDACTED]

Jay Goldberg

From: Leslie Green
Sent: October-05-11 9:08 AM
To: [REDACTED]
Cc: 'Felker, Bob (MTO)' (Bob.Felker@ontario.ca); rakesh.shreewastav@ontario.ca; 'Jane Mustac' (jmustac@countyofessex.on.ca); 'Eugeni, Josette' (jeugeni@city.windsor.on.ca); Michael Chiu
Subject: RE: Lauzon Parkway EA

[REDACTED]

Thank you for your interest in the study.

A noise assessment will be completed as part of this study and presented at the second Public Information Centre.

The proposed improvements will increase the capacity of the roadway network and accommodate an increased number of vehicles, potentially adversely affecting air quality. However, emission levels are highest when vehicles are stopping and starting. Improvements to County Road 42 will reduce queuing, resulting in reduced emissions of greenhouse gases. Air quality is also expected to improve due to the adoption of stricter truck and car emission standards and anticipated significant reductions in transboundary pollution. The 2004 to 2007 car and truck emission standards will result in 70 to 90% reductions in oxides of nitrogen and particulate matter emissions, the principle contributors to smog. This measure is complemented by fuel quality standards that have already reduced the sulphur content of gasoline and diesel fuel by more than 95%.

As part of the proposed improvements to County Road 42, it is expected that there will be no to little difference to air quality conditions when compared to the "do nothing" option (i.e. no proposed road improvements).

We have added you to our contact list to ensure that you are notified of upcoming events. You will be notified of the second Public Information Centre which is tentatively scheduled to be held in the Fall of 2011. Should you have any further questions, comments or suggestions, please do not hesitate to contact us. McCormick Rankin Corporation has created a study website (www.lauzonparkwayea.ca). The website includes study information and is updated as information becomes available.

With the exception of personal information all comments will become part of the public record.

Sincerely,
Lauzon Parkway Project Team

--- [REDACTED]
From: [REDACTED]
Sent: September-15-11 11:06 PM
To: Leslie Green
Subject: Lauzon Parkway EA

You have received a message regarding Lauzon Parkway EA. Message details are as follows:

[REDACTED]

Province: Ontario

Postal Code: N9K1C1

Message:

Dear Sir or Madame, unfortunately i was unable to attend your presentation regarding the widening of Hwy.42 from walker to county rd 25. I live right next to the highway at Strawberry Dr. My concern here would be the added noise which already is at a high level and uncomfortable. When i selected this lot 18 years ago the traffic was at a tolerable level. My question is will there be any noise reduction walls built to alleviate the noise to comfortable level? Will there be a study for this and for truck and car emmissions?

Jay Goldberg

From: Leslie Green
Sent: July-19-11 2:00 PM
To: 'Dan McCulloch'
Cc: Kathy Hengl; Nick Rosati; rakesh.shreewastav@ontario.ca; 'Eugeni, Josette' (jeugeni@city.windsor.on.ca); 'Jane Mustac' (jmustac@countyofessex.on.ca); Michael Chiu; 'Felker, Bob (MTO)' (Bob.Felker@ontario.ca)
Subject: RE: 7th Concession alignment proposal

Mr. McCulloch,

Thank you for attending the July 14, 2011 Public Information Centre #1 for the Lauzon Parkway Improvements Class Environmental Assessment Study.

The project team will take into consideration your proposed concept in the assessment of the 7th Concession alternatives.

You will be notified of the second Public Information Centre which is tentatively scheduled to be held in the Fall of 2011. Should you have any further questions, comments or suggestions, please do not hesitate to contact us.

Thank you,
Leslie Green
for Michael Chiu

From: Dan McCulloch [<mailto:Dan.McCulloch@rosatigroup.com>]
Sent: July-18-11 11:05 AM
To: Leslie Green
Cc: Kathy Hengl; Nick Rosati
Subject: 7th Concession alignment proposal

Mr. Chiu,

I attended the EA presentation in Windsor last week and have attached an alignment that is supported by us as holders of an interest in the properties that I have outlined in green on the attached map. This proposal was described by one of the presenters at the meeting and I have been told by their representative that it is also supported by the Windsor Christian Fellowship who has title to the one property abutting the new Legacy Park extension.

I trust that this will lend weight to the advancement of this proposal and look forward to any questions you may have or the completion of the EA study.

Sincerely,

Dan McCulloch MAATO | Land Development Manager
c. 519.796.6505 | p. 519.734.7575 x41 | f. 519.734.7872 | dan.mcculloch@rosatigroup.com
Rosati Group | Windsor, Ontario

www.rosatigroup.com | www.grandcentralpark.com | www.greenwoodcentre.com | www.lotstooffer.ca

This e-mail and any files transmitted with it are confidential and intended solely for the use of the individual or entity to whom they are addressed. If you have received this e-mail in error, please notify the sender immediately and discard this message.



Please consider the environment before printing this e-mail or its attachment(s)

Jay Goldberg

From: Leslie Green
Sent: July-20-11 9:36 AM
To: 'mcculloughaa@hotmail.com'
Cc: Michael Chiu; rakesh.shreewastav@ontario.ca; 'Felker, Bob (MTO)' (Bob.Felker@ontario.ca); 'Eugeni, Josette' (jeugeni@city.windsor.on.ca); 'Jane Mustac' (jmustac@countyofessex.on.ca)
Subject: Lauzon Parkway Improvements Class EA PIC #1

Mr. McCullough,

Thank you for attending the July 14, 2011 Public Information Centre (PIC) #1 for the Lauzon Parkway Improvements Class Environmental Assessment Study.

The displays presented at the PIC are available on the "Consultation" page of the project website (www.lauzonparkwayea.ca).

You will be notified of the second Public Information Centre which is tentatively scheduled to be held in the Fall of 2011. Should you have any further questions, comments or suggestions, please do not hesitate to contact us.

Sincerely,
Lauzon Parkway Project Team

Leslie Green, P.Eng.
McCormick Rankin Corporation | A member of MMM Group
2655 North Sheridan Way, Suite 300
Mississauga, Ontario
L5K 2P8
Phone: (905) 823-8500
Fax: (905) 823-8503

Jay Goldberg

From: [REDACTED]
Sent: November-03-11 3:49 PM
To: Heather Templeton
Subject: Re: Lauzon Parkway Environmental Assessment Process - request to be added to your mailing list for updates

Thank you!

----- Original Message -----

From: [Heather Templeton](#)

Cc: [Michael Chiu](#) ; rakesh.shreewastav@ontario.ca ; [Jane Mustac](#) ; [Eugeni, Josette](#)

Sent: Thursday, November 03, 2011 3:47 PM

Subject: RE: Lauzon Parkway Environmental Assessment Process - request to be added to your mailing list for updates

[REDACTED]

I apologize, we have not received your comments. I will follow-up with our website manager to ensure the contact form is working correctly.

We have added you to our contact list to ensure that you are notified of upcoming events. The study team is currently assessing the alternatives presented at PIC 1 and will present the functional/preliminary design of the preferred alternative at PIC 2. You will be notified in advance of the second Public Information Centre. Should you have any further questions, comments or suggestions, please do not hesitate to contact us. McCormick Rankin Corporation has created a study website (www.lauzonparkwayea.ca). The study information on the website is updated as information becomes available; the documents on the website are the most current.

With the exception of personal information all comments will become part of the public record.

Sincerely,
Lauzon Parkway Project Team

From: [REDACTED]
Sent: November-03-11 1:26 PM
To: Heather Templeton; rakesh.shreewastav@ontario.ca; Jane Mustac; Eugeni, Josette
Subject: Lauzon Parkway Environmental Assessment Process - request to be added to your mailing list for updates

Hello,

On Oct 16/11, I sent a request using the Contact Form provided on the website asking to be added to your contact list. I also asked i)what is the status of the EA and ii) are the study documents on the website the most current versions? I have not received an acknowledgement of my attempt to contact you so am wondering if you received my Contact Form. Can you please confirm by sending me a quick email?

Thanks,

[REDACTED]

Jay Goldberg

From: Heather Templeton
Posted At: December-19-11 4:03 PM
Conversation: Lauzon Parkway EA - Telephone Conversation with Tiziano Zaghi, MHBC Planning
Subject: Lauzon Parkway EA - Telephone Conversation with Tiziano Zaghi, MHBC Planning (December 19, 2011)

Tiziano Zaghi of MHBC Planning called and left a message (705-728-0045 x33), inquiring about the status of the proposed intersection at Walker Road and the E-W Arterial, as well as the timing of the next public meeting, and asked to be placed on the study mailing list. Heather spoke with Tiziano on December 19, 2011 reporting that the study team is still assessing alternatives and the preferred alternative will be presented at the next public meeting, which is likely to be held next Spring (late March/April).

Tiziano noted that he represents the Rosati Group, landowners of the parcel just west of the church, located between Walker Road and 7th Concession, north of the proposed E-W Arterial, and is preparing planning applications for this site to be re-zoned from industrial to commercial retail land uses (not big box). He noted that they met with the City planning staff, including Michael Cooke, last week on Monday December 12, 2011 to discuss the redevelopment of these lands. Tiziano noted he has recently reviewed the options included in the PIC 1 displays on the study website, and asked if the cul-de-sac option could be terminated further north to allow for integration with the developed parcel to the west and a shared access to Walker Road. He noted concerns with the 7th Concession Road realignment option as it would significantly impact the development potential of these lands. Tiziano noted he will let his clients know that the preferred alternatives will be presented at the next public meeting and suggest they submit their comments in advance.

Tiziano noted he also represents a landowner on CR 42 that would be impacted by the proposed realignment of Banwell Road.

Heather Templeton, P.Eng.
Project Engineer, Associate
Transportation Planning
McCormick Rankin Corporation | A member of MMM Group
2655 North Sheridan Way Suite 300 | Mississauga ON L5K 2P8
T: 905.823.8500 X 1378 | F: 905.823.8503 | e: h templeton@mrc.ca
www.mrc.ca

APPENDIX E

**SANDWICH SOUTH SECONDARY PLAN STUDY
WORKSHOP #2 SUMMARY REPORT**

**City of Windsor
Sandwich South Secondary Plan
Public Consultation Meeting 2**

Table of Contents

1.0	INTRODUCTION	1
2.0	DEVELOPMENT CONCEPTS	1
3.0	PUBLIC COMMENTS.....	2
3.1	Option #1.....	2
3.2	Option #2.....	3
3.3	Option #3.....	3
3.4	Option #4.....	4
4.0	NEXT STEPS	4

1.0 INTRODUCTION

This report summarizes comments received at the second public workshop held to engage members of the public in discussions about the development of the Sandwich South Secondary Plan Area in the City of Windsor. The workshop was held on July 14, 2011 at the Windsor Christian Fellowship located just off Walkers Road in the City of Windsor. The workshop was held in conjunction with Public Information Centre # 1 being conducted as part of the Lauzon Parkway, County Road 42 and a future East-west Arterial road Environmental Assessment Study currently being undertaken in parallel with the Secondary Plan. The Environmental Assessment Study is examining transportation improvements for the part of Windsor that is subject to the Secondary Plan. The projects are being undertaken by the same project team and the process is being conducted simultaneously.

The first public workshop consisted of a series of exercises wherein members of the public were asked to describe their values, issues and objectives related to the Secondary Plan Area. The purpose of the second workshop was to involve members of the public in discussions about the development of the Secondary Plan. At this workshop, a series of land use concepts were presented and the participants were invited to provide comments on the concepts. Following the workshop, Meridian Planning Consultants and the City of Windsor will work on the development of the preferred Secondary Plan concept.

2.0 DEVELOPMENT CONCEPTS

Four development concepts were prepared to generate discussion regarding the final development plan for the area. Each development concept varies slightly with respect to land use and road location, save and except for the location of the proposed Lauzon Parkway. The location of the Lauzon Parkway was set as a single common location for the purposes of planning. It is recognized that in the final Environment Assessment process that location may vary. However, to a great extent, it is believed that the Parkway will eventually be located in the vicinity of the location shown on each of the four Concept Plans.



A more fulsome description of the various concepts can be found in the Background Report to the Secondary Plan. The following graphically displays the concepts as presented to the public.

A more fulsome description of the various concepts can be found in the Background Report to the Secondary Plan. The following graphically displays the concepts as presented to the public.

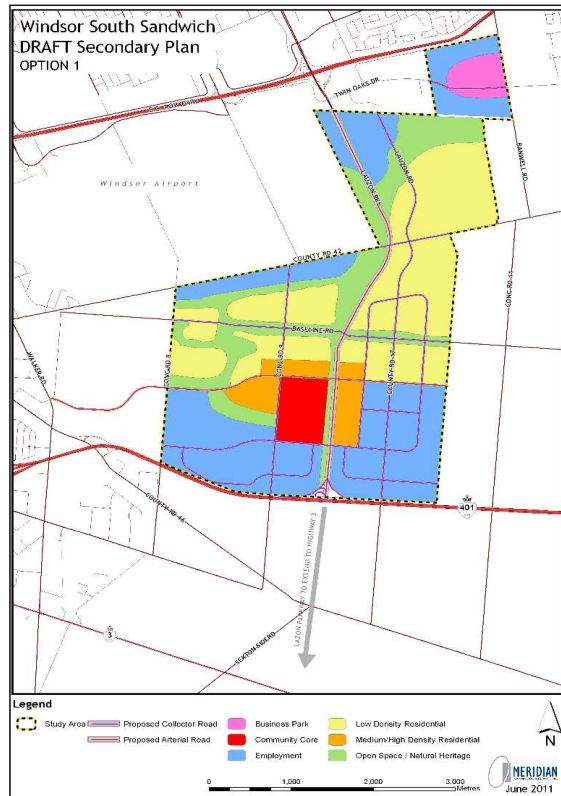
3.0 PUBLIC COMMENTS

Public comments received in a series of two sessions, an afternoon session and an evening session with the evening sessions being a repeat of the afternoon sessions. At each session, copies of the Concept Plans were distributed among participants and the participants were encouraged to mark up the plans in order to display their concepts. In each session, groups of four or five tables each containing four or five people were arranged as working groups. Each group was given time to review the Concept Plan and provide comments. Comments were then reported back to all of the participants and a fulsome discussion on each of the issues raised followed.

3.1 OPTION #1

Option One illustrates an east-west arterial road that has a number of large sweeping curves in order to align the arterial road and Lauzon Parkway intersection in a location near the centre of the Secondary Plan area. Some of the participants indicated that the east-west arterial should not have so many curves and should be straighter and more direct.

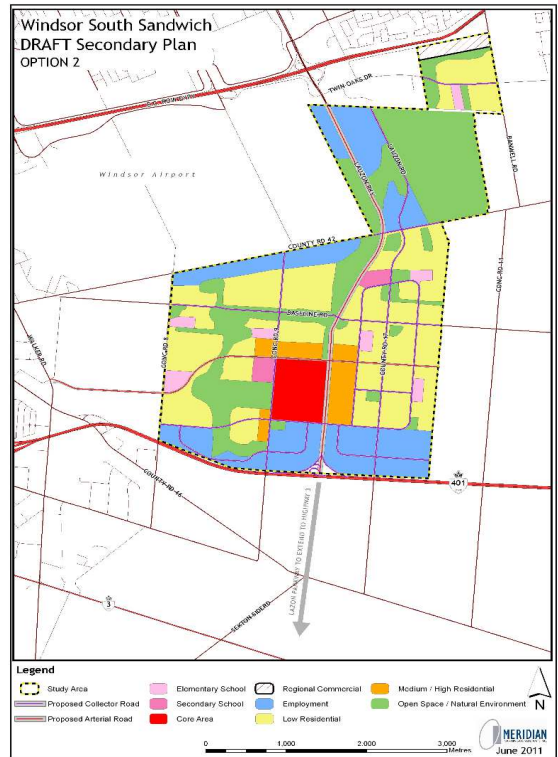
There were also comments regarding the extent of the Open Space area near the intersection of County Road 42 and the Lauzon Parkway extension. A number of participants indicated that this would be an ideal location for commercial development and that the Open Space designation underutilized this opportunity.



3.2 OPTION #2

Option 2 provides a somewhat straighter alignment for the east-west arterial and maintains the connection with the Lauzon Parkway in approximately the same location. This concept enables the Core Area to be located on the south-west corner of the intersection. This option also has a very large open space area, approximately 90 ha located in the north-east section. The large centralized open space area would provide sufficient land to meet needs for a regional park as well as storm water management facilities.

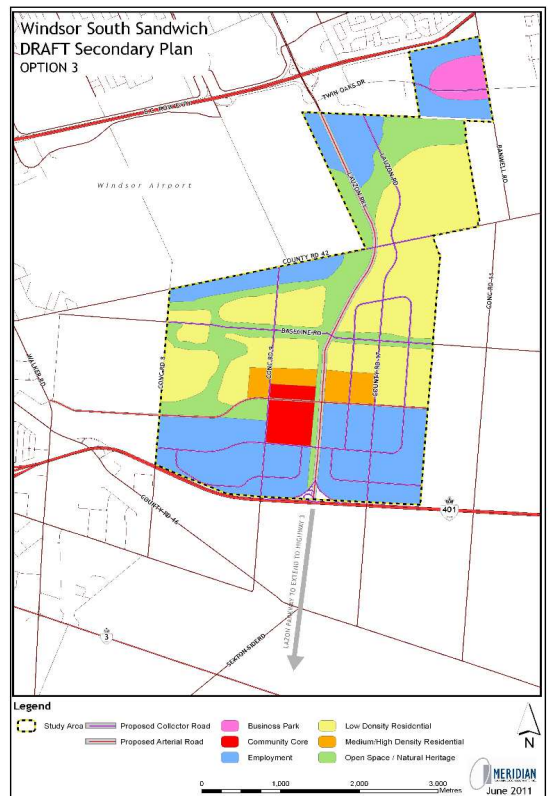
Suggestions made by participants included extending the east-west arterial southerly to use it as the division between the Core area and the Employment lands. Participants also questioned the need for such a large Open Space area and the relationship between that Open Space area and the proposed land use in the Town of Tecumseth immediately east of the Secondary Plan area.



3.3 OPTION #3

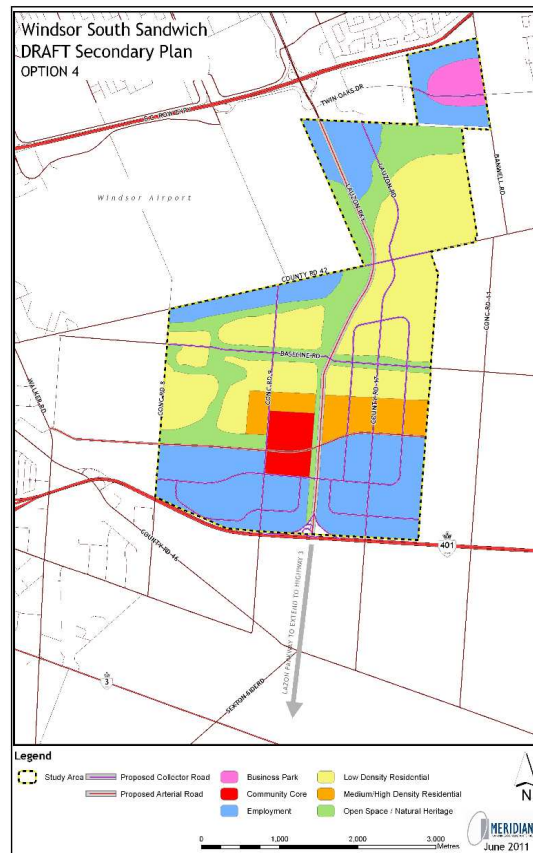
Option 3 includes a more southerly east-west arterial that bisects the Core Area. It has a larger Employment Area, extending northerly toward the Core Area. The amount of Residential land consumed by the added Employment land is compensated reducing the Open Space area in the north-east.

Participants indicated support for the expanded Employment area but indicated concern about bi-secting the Core Area with the east-west arterial road. Sketches on the map included a more detailed road network in the north-east section of the Secondary Plan Area.



3.4 OPTION #4

Option 4 illustrates the most direct route for the east-west arterial to the Lauzon Parkway. However this option also bisects the Core Area. Participants reviewing this option indicated that the Lauzon parkway extension should be located further east, at the limit of the Windsor-Tecumseth border. There was also concern expressed about properties that would be divided by the Lauzon Parkway extension and the east-west arterial. Concern about the extent of the Open Space designation was also illustrated on the maps provided to the participants.



4.0 NEXT STEPS

Following receipt of these comments, the Project Team will work with the City of Windsor and Ministry of Transportation to finalize a preferred concept for the roadway pattern and the land use. This preferred concept will then be subject to further consultation throughout the fall of 2011. It is anticipated that the finalization of the Secondary Plan will occur in early 2012, at which time it will be presented to Council and the City of Windsor for their consideration prior to final approval.

Respectfully Submitted,

Jim Dymant, BES, MCIP, RPP