

**PONTIAC PUMPING STATION CAPACITY UPGRADES
MUNICIPAL CLASS ENVIRONMENTAL ASSESSMENT – SCHEDULE ‘C’
ENVIRONMENTAL STUDY REPORT**
Appendices

APPENDIX A: FIGURES

Figure 1.1: Existing Storm Sewer System in the Pontiac Drainage Area

Figure 1.2: Proposed Pontiac Drainage Area Improvements

Figure 1.3: Municipal Class EA Planning and Design Process

Figure 2.1: Archaeological Potential in the City of Windsor Area

Figure 2.2: Aerial Plan of Windsor's Cultural Heritage Sites

Figure 5.1B: Site Layout Alternative No. 1

Figure 5.2B: Site Layout Alternative No. 2

Figure 5.3B: Site Layout Alternative No. 3





- 0 370 740 metres
- 1:6,163 (At original document size of 22x34)

Notes

1. Coordinate System: NAD 1983 UTM Zone 17N

165620249 REVA
Prepared by HLR on 2022-08-05

Client/Project

Pontiac Pump Station Capacity Upgrades "Schedule C" Class EA

Figure No.

Figure 1.1

Title
**Existing Storm Sewer System in the Pontiac
Drainage Area**

Disclaimer: Stantec assumes no responsibility for data supplied in electronic format. The recipient accepts full responsibility for verifying the accuracy and completeness of the data. The recipient releases Stantec, its officers, employees, consultants and agents, from any and all claims arising in any way from the content or provision of the data.



Legend

- Proposed Pontiac Drainage Area
- Amended East Marsh Drainage Area
- Ganatchio Trail Berm
- Existing Storm Sewers
- Storm Sewer Improvements
- SWM Ponds
- Storm Pump Stations

0 500 1,000 metres
1:8,225 (At original document size of 22x34)

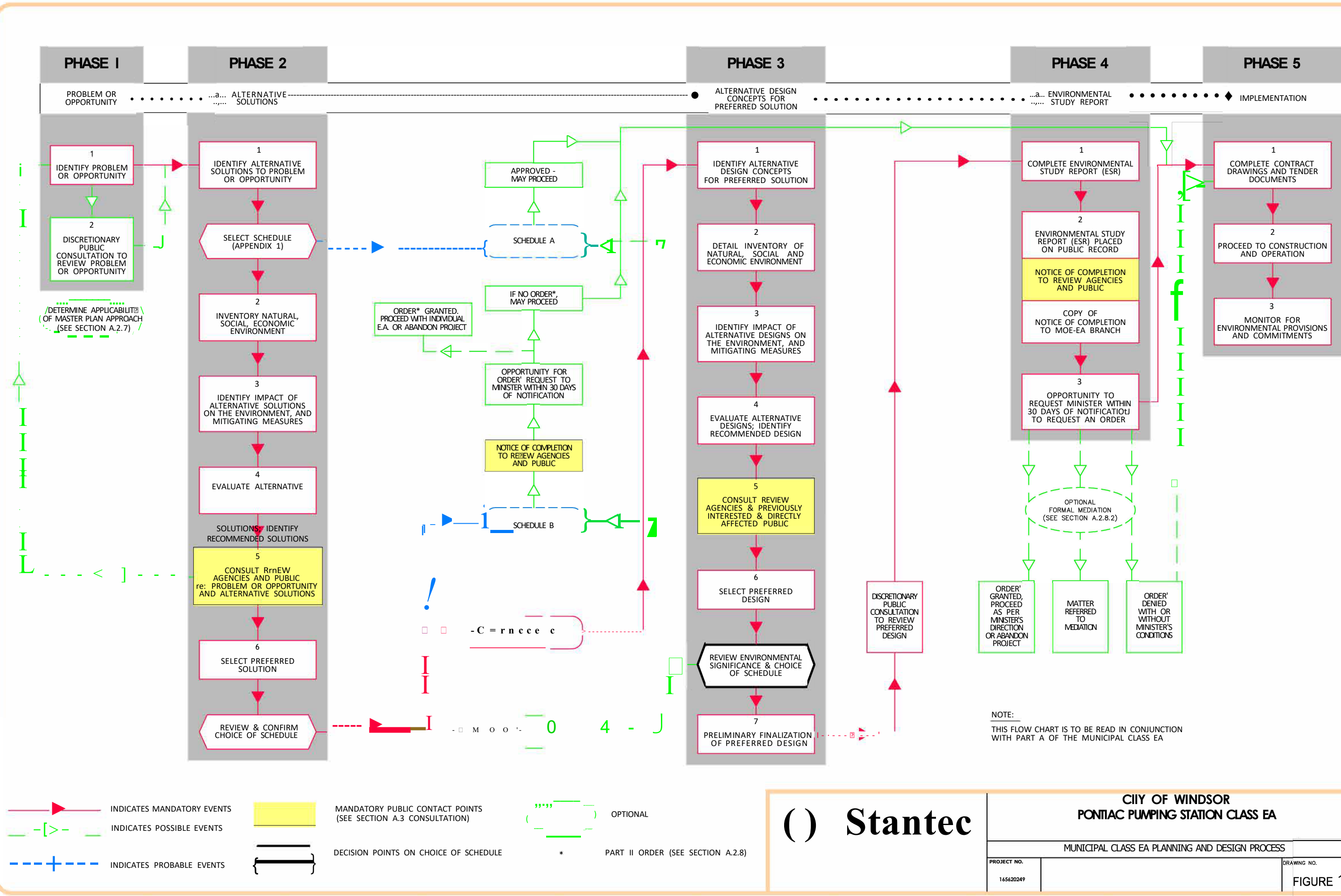
Notes
1. Coordinate System: NAD 1983 UTM Zone 17N

Project Location
East Windsor

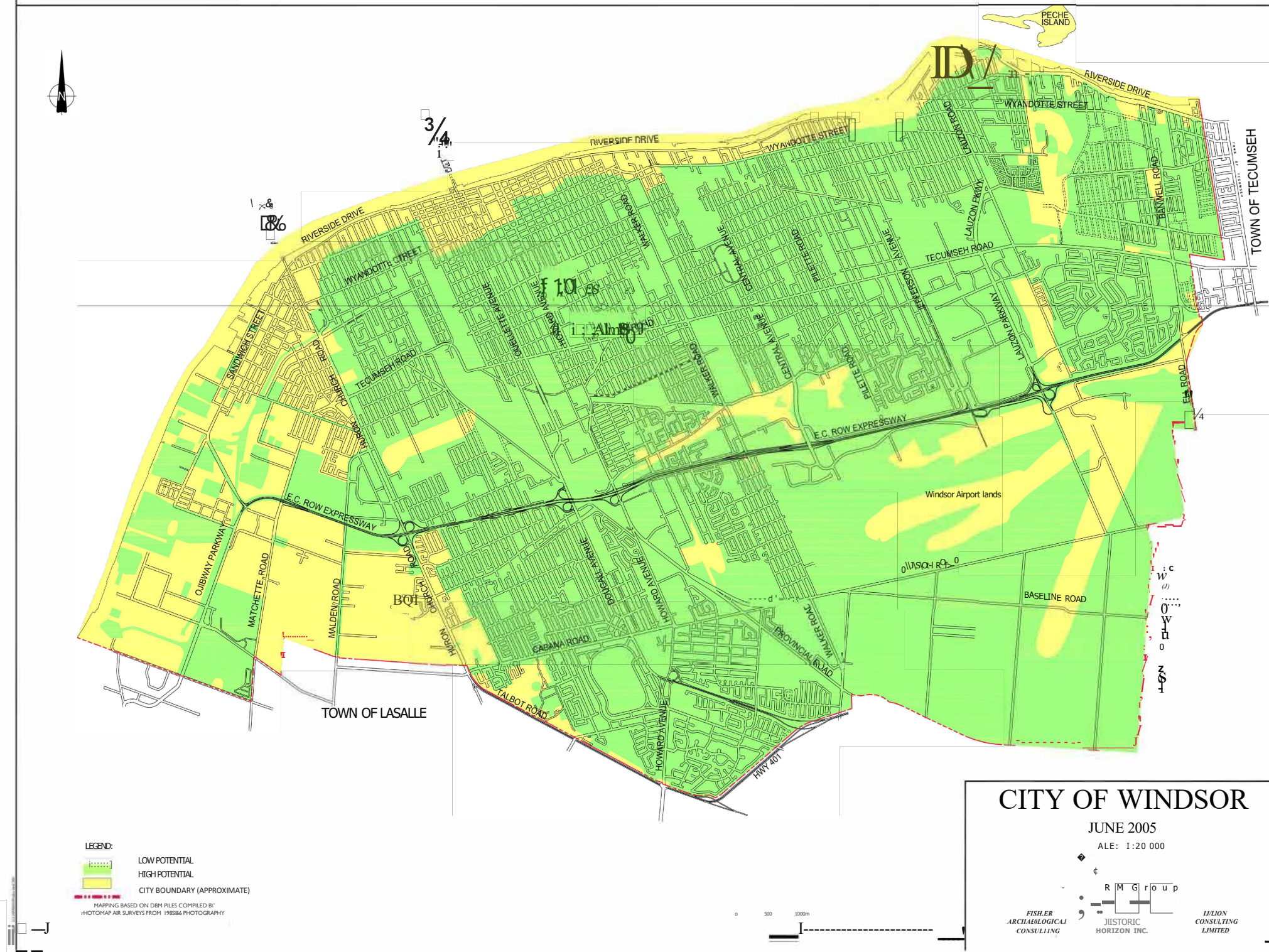
165620249 REVA
Prepared by HLR on 2022-08-22

Client/Project
Pontiac Pump Station Capacity Upgrades "Schedule C" Class EA

Figure No.
Figure 1.2
Title
Proposed Drainage Area Improvements



WINDSOR ARCHAEOLOGICAL MASTER PLAN: FIGURE 4.0 - ARCHAEOLOGICAL POTENTIAL



() Stantec

CITY OF WINDSOR
PONTIAC PUMPING STATION CLASS EA

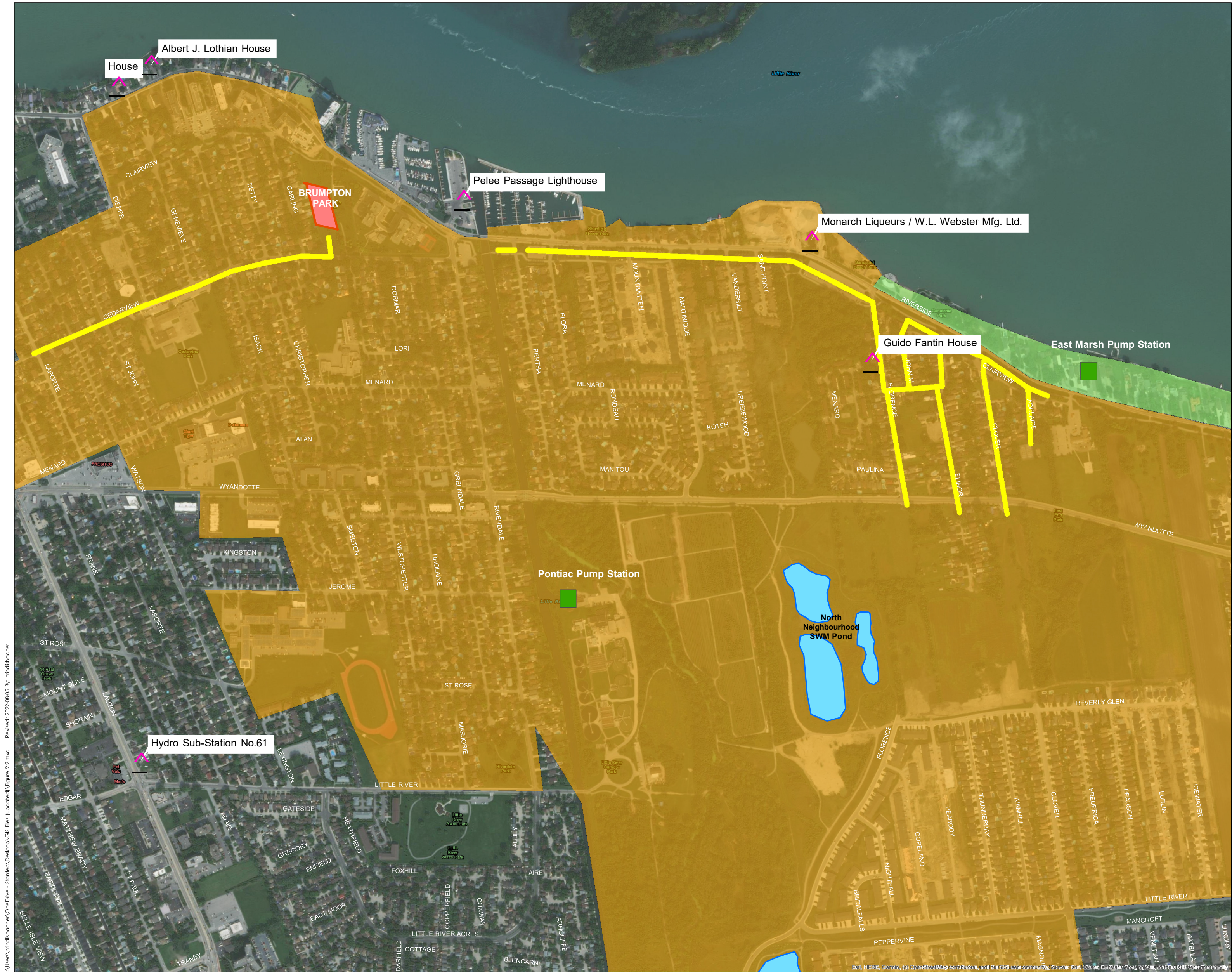
ARCHAEOLOGICAL POTENTIAL IN THE CITY OF WINDSOR AREA

PROJECT NO.
165620249

DRAWING NO.

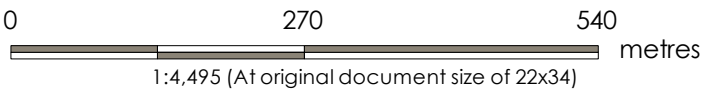
FIGURE 2.1

C:\Users\hindsbocher\OneDrive - Stantec\Desktop\GIS Files (updated)\Figure 2.2.mxd
Revised: 2022-08-05 By: hindsbocher



Legend

- Proposed Pontiac Drainage Area
- Amended East Marsh Drainage Area
- Storm Sewer Improvements
- SWM Ponds
- Heritage Sites
- Underground Storage
- Storm Pump Stations



Notes
1. Coordinate System: NAD 1983 UTM Zone 17N

Project Location
East Windsor
165620249 - REVA
Prepared by HLR on 2022-08-05

Client/Project
Pontiac Pump Station Capacity Upgrades "Schedule C" Class EA

Figure No.
Figure 2.2
Title
Aerial Plan of Windsor's Cultural Heritage Sites



The Contractor shall verify and be responsible for all dimensions. DO NOT scale the drawing - any errors or omissions shall be reported to Stantec without delay.
The Copyrights to all designs and drawings are the property of Stantec. Reproduction or use for any purpose other than that authorized by Stantec is forbidden.

Notes

| | | | |
|--|------|-------|---------|
| Revision | By | Appd. | YY.MM |
| | | | |
| | | | |
| | | | |
| | | | |
| | | | |
| | | | |
| A | J.L. | J.L. | 2022.04 |
| Issued | By | Appd. | YY.MM |
| | | | |
| File Name: 165620240_SW-I 0_ option-office | G.K. | J.L. | 2021.09 |
| | Dwn. | Chkd. | YY.MM |
| | | Dson. | |

**PRELIMINARY
NOT FOR
CONSTRUCTION**

Not for permits, pricing or other official purposes. This document has not been completed or checked and is for general information or comment only.

Client/Project

CORPORATION OF THE CITY OF WINDSOR
LITTLE RIVER POLLUTION CONTROL PLANT
PONTIAC PUMPING STATION UPGRADE
NEW PUMPING STATION

Site Layout Alternative No. 1

Revision Sheet

Drawing No.

Figure 5.1B



OPTION-



The Contractor shall verify and be responsible for all dimensions. DO NOT scale the drawing - any errors or omissions shall be reported to Stantec without delay.
The Copyrights to all designs and drawings are the property of Stantec. Reproduction or use for any purpose other than that authorized by Stantec is forbidden.

Notes

[illegible]

Permit/Seal

PRELIMINARY
NOT FOR
CONSTRUCTION

Not for permits, pricing or other official purposes. This document has not been completed or checked and is for general information or comment only.

Client/Project
CORPORATION OF THE CITY OF WINDSOR
LITTLE RIVER POLLUTION CONTROL PLANT
PONTIAC PUMPING STATION UPGRADE
NEW PUMPING STATION

City of Windsor, Ontario
Title

Site Layout Alternative No. 2

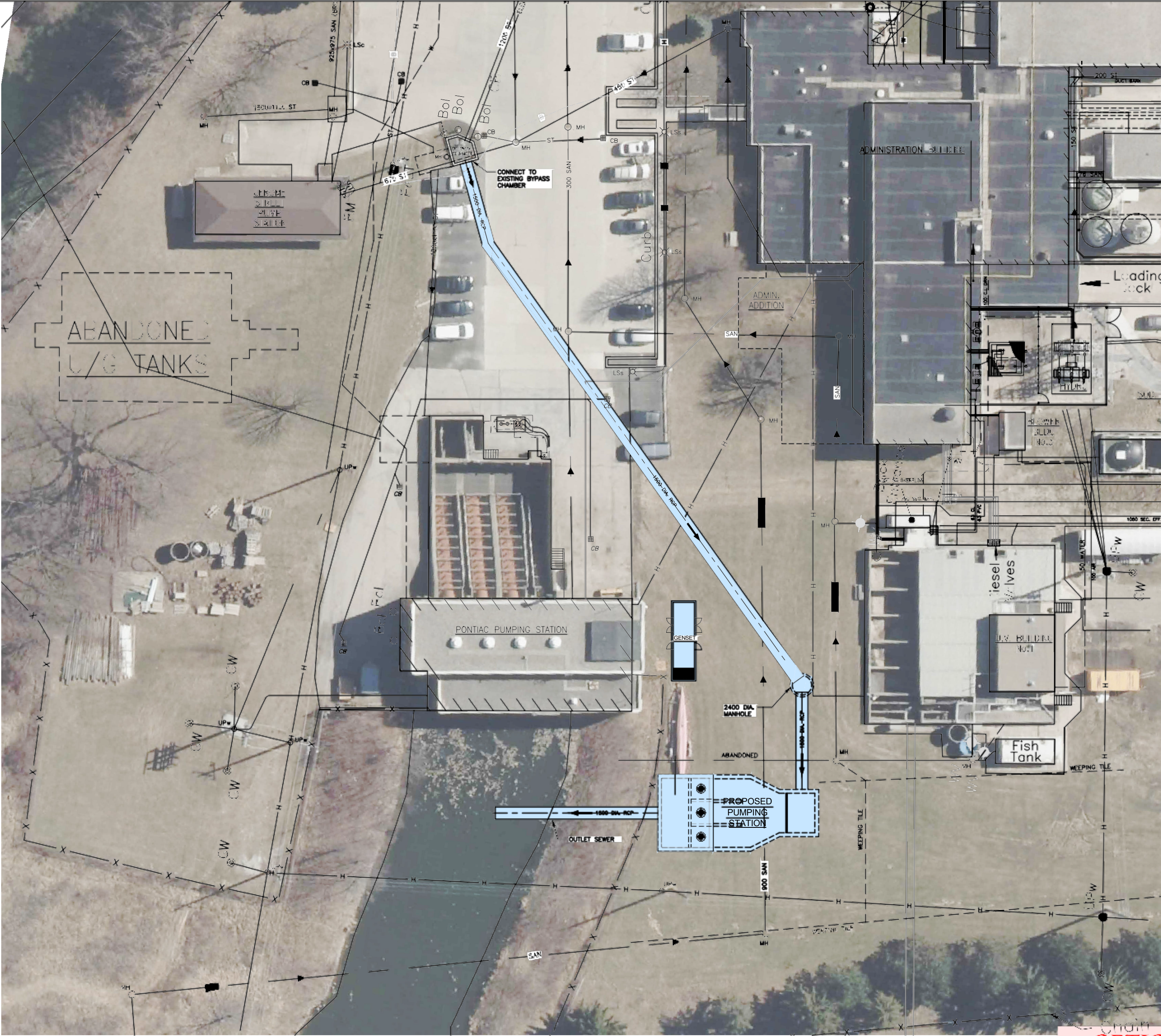
| | | |
|--------------------------|-------|-------------------|
| Project No. 165620249 | | Scale AS SHOWN |
| Revision | Sheet | Drawing No. |

Figure 5.2B



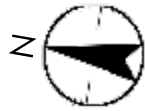
C:\01656\active\165620249\preliminary\drawing\process\165620249_SW-101_option.dwg

V:\016562\active\165620249\preliminary\drawing\process\165620249_SW-101_option-office.dwg
2022-6-01 11:23am Brg qba



AERIAL PLAN
SCALE: 1:250

OPTION - 3



Stantec
100-2555 Ouellette Avenue
Windsor ON Canada N8X 1L9
Tel: 519.966.2250
www.stantec.com

Copyright Reserved
The Contractor shall verify and be responsible for all dimensions. DO NOT scale the drawing
- any errors or omissions shall be reported to Stantec without delay.
The Copyrights to all designs and drawings are the property of Stantec. Reproduction or
use for any purpose other than that authorized by Stantec is forbidden.

Legend

Notes

| | | | |
|---|------|-------|------------|
| Revision | By | Appd. | YY.MM.DD |
| A | J.L. | J.L. | 2022.04.04 |
| Issued | By | Appd. | YY.MM.DD |
| File Name: 165620249_SW-101_option-office | Q.K. | J.L. | J.L. |
| | Dwn. | Chkd. | Dsgn. |
| | | | YY.MM.DD |

Permit/Seal

**PRELIMINARY
NOT FOR
CONSTRUCTION**

Not for permits, pricing or other official
purposes. This document has not been
completed or checked and is for
general information or comment only.

Client/Project
CORPORATION OF THE CITY OF WINDSOR
LITTLE RIVER POLLUTION CONTROL PLANT
PONTIAC PUMPING STATION UPGRADE
NEW PUMPING STATION

City of Windsor, Ontario
Title

Site Layout Alternative No. 3

| | |
|--------------------------|-------------------|
| Project No. 165620249 | Scale AS SHOWN |
| Revision Sheet | Drawing No. |

Figure 5.3B