



**STATION #3**



**SANDWICH SOUTH  
MASTER SERVICING  
PLAN**

# Transportation





# Transportation

## Existing Conditions

- Little existing traffic from the study area
- Most boundary roads operating well; Banwell Rd nearing capacity
- Existing roads have few sidewalks or cycling facilities
- Transit service available only on the periphery of the study area



*County Rd 42 (Typical Road within Study Area)*

## Problems and Opportunities

### Problems

- Study area road network is incomplete
- Lack of road capacity to serve future development
- Few sidewalks or cycling facilities

### Opportunities

- The City can reserve space to expand the internal road network in the future
- Where new roads are built and existing ones are modified, sidewalks and cycling facilities can easily be added
- Transit service can be expanded to serve new residents

# Transportation – Possible Solutions

## Option 1 - Do Nothing

### Advantages:

- Lowest costs
- Smallest impacts from construction

### Disadvantages:

- Worst traffic congestion,
- No sustainable transportation links

## Option 2a - Expand Road Network (Plan for High Auto Mode Share)

### Advantages:

- Best level of service for vehicle travel

### Disadvantages:

- Construction impacts
- Higher capital costs to expand road network
- Lower level of service for transit, pedestrians, and cyclists

## Option 2b - Expand Road Network (Emphasis on transit, cycling, walking)

### Advantages:

- Acceptable level of service for vehicle travel
- Higher level of service for transit, pedestrians, and cyclists

### Disadvantages:

- Construction impacts
- Higher capital costs to expand road network

## Option 3 - Consider Smaller Development Plan

### Advantages:

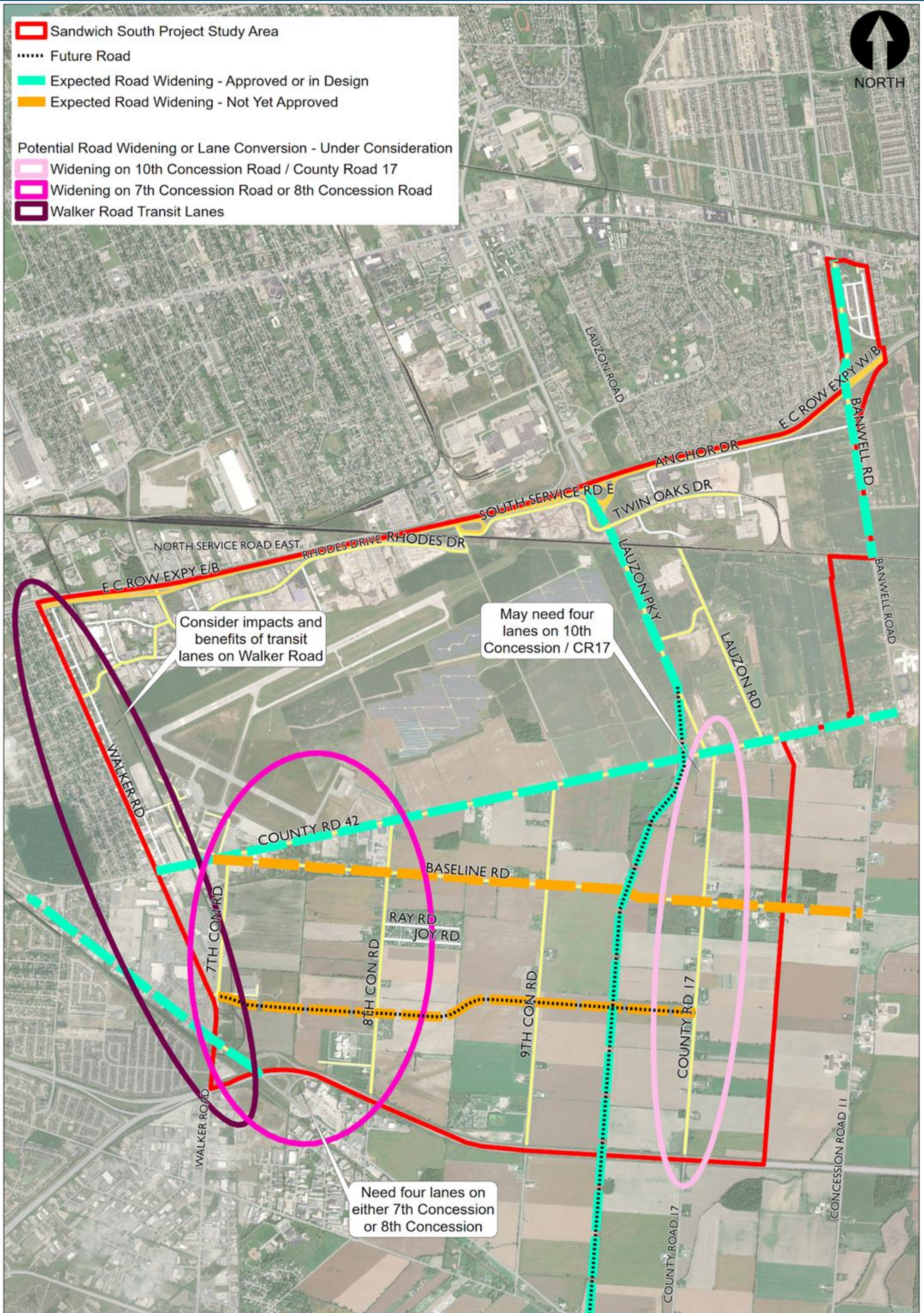
- Less costs compared to Option 2
- High level of service for vehicle travel
- Less construction impacts

### Disadvantages:

- Less people and jobs to support transit



# Road Widening Planned and Under Construction





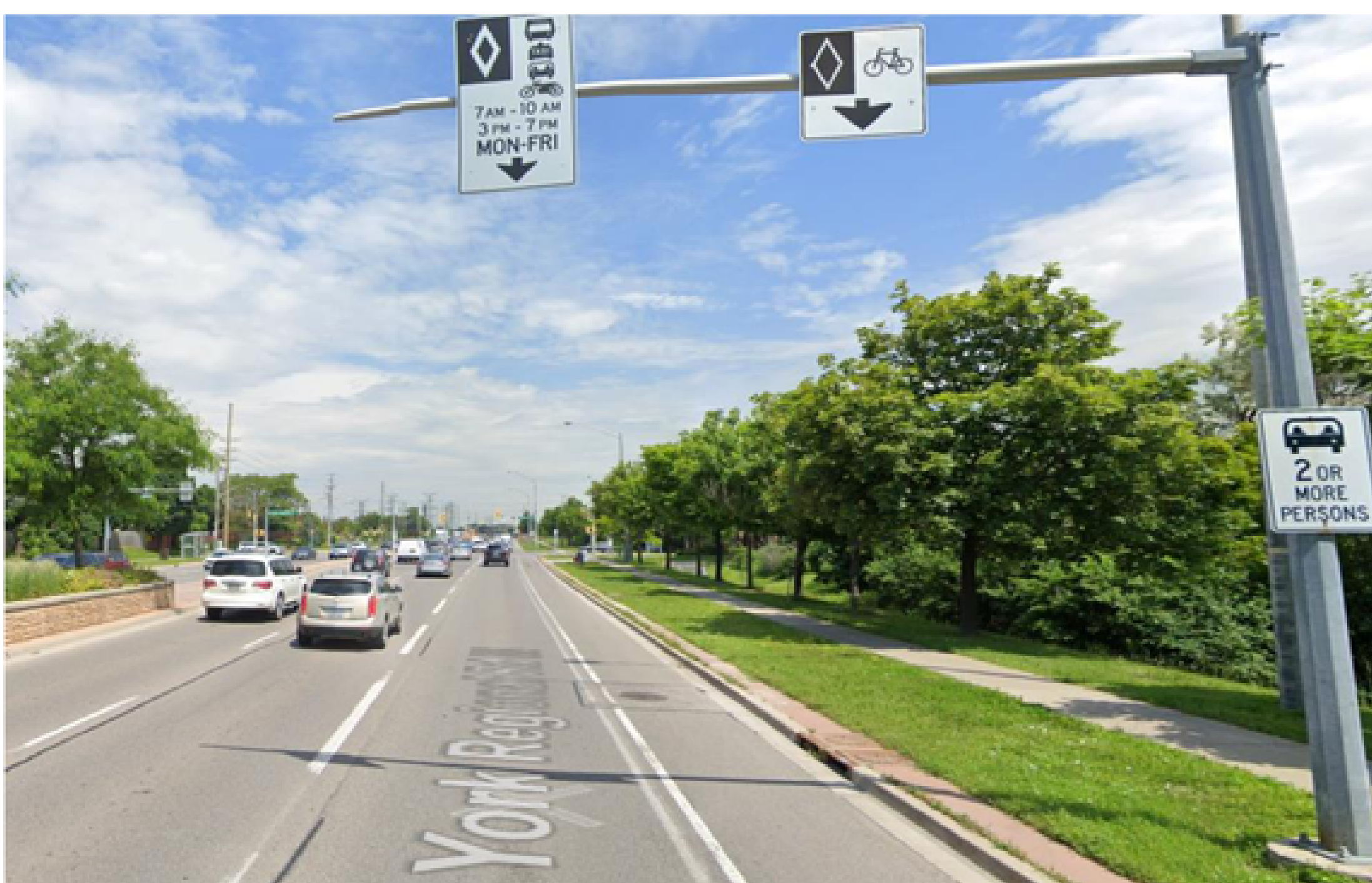
# Complete Streets

Complete streets are streets that are safe for everyone, including people that walk, bike, use transit, and drive. They not only keep road users safe, but also encourage sustainable modes of transportation.

Complete streets are recommended for Sandwich South because it will be necessary to accommodate non-vehicle modes to manage congestion and keep pedestrians and cyclists safe.

## Examples

The examples below show complete streets across Ontario. The final recommendations for Sandwich South may vary.



Vaughan, ON (Dufferin St.)



Peterborough, ON (Brealey Dr.)



Ottawa, ON (Main St.)



# Feedback: Transportation Solutions

We want to hear your thoughts!

What do you like about these transportation options? What do you not like? What is missing?

You can provide your feedback by visiting the survey link:

<https://www.surveymonkey.com/r/sandwichsouth>

Or by scanning the QR code with your phone or tablet:

