

# HURON CHURCH ROAD



SEE THIS SHEET - MATCH LINE A

# HURON CHURCH ROAD



SEE SHEET 14

SEE THIS SHEET - MATCH LINE A

## PAVEMENT MARKINGS LEGEND

NAME OF LINE	DIMENSIONS (m)	USE
LONGITUDINAL (A)	0.10	EDGE LINES (WHITE OR YELLOW), DIRECTIONAL DIVIDING LINES (YELLOW), LANE LINES PROHIBITING LANE CHANGES (WHITE)

- WORK ZONE
- TEMPORARY ASPHALT
- TRAFFIC FLOW DIRECTION (FOR REFERENCE ONLY)

### GENERAL NOTES:

1. THIS DRAWING IS ONLY INTENDED TO SERVE AS A GUIDE TO THE CONTRACTOR AND IN NO WAY RELIEVES THE CONTRACTOR OF HIS OBLIGATIONS SO SPECIFIED IN THE CONTRACT DOCUMENTS.
2. ALL SIGNS SHALL CONFORM TO THE MOST RECENT EDITION OF ONTARIO TRAFFIC MANUAL - BOOK 7.
3. ALL SIGNS, BARRICADES AND LIGHTS SHALL BE INSPECTED REGULARLY AND MAINTAINED BY THE CONTRACTOR.
4. REFLECTORIZED MATERIALS ARE TO BE USED IN THE MANUFACTURE OF SIGNS IN ACCORDANCE WITH ONTARIO TRAFFIC MANUAL - BOOK 7.
5. DRAWINGS SHOW THE MINIMUM SUGGESTED REQUIREMENTS FOR SIGNAGE, BARRICADES ETC. THE CONTRACTOR SHALL ADD ANY SIGNS OR BARRICADES REQUIRED TO SAFELY PERFORM THEIR WORK AND SAFELY AND EFFECTIVELY GUIDE TRAFFIC THROUGH THE CONSTRUCTION AREA AT NO EXTRA COST TO THE CONTRACT.
6. ACCESS TO DRIVEWAYS TO BE MAINTAINED DURING CONSTRUCTION. NO DRIVEWAY ACCESS TO BE OBSTRUCTED OVERNIGHT.
7. TRAFFIC CONTROL PERSONS TO BE USED AS NECESSARY.
8. CONTRACTOR SHALL PREPARE AND SUBMIT A TRAFFIC CONTROL AND PROTECTION PLAN FOR REVIEW BY THE ENGINEER, TWO WEEKS IN ADVANCE OF EACH STAGE OF CONSTRUCTION.
9. CONTRACTOR MUST COORDINATE SIGNAGE WITH OTHER CONSTRUCTION PROJECTS THAT MAY BE IN THE AREA.
10. CONTRACTOR TO NOTIFY AND UPDATE EMERGENCY SERVICES OF TRAFFIC CONTROL PRIOR TO THE START OF EACH STAGE OF CONSTRUCTION.
11. CONTRACTOR TO SUPPLY AND INSTALL SIGNAGE AND FACILITIES AS REQUIRED TO DIRECT PEDESTRIANS.
12. CONTRACTOR TO SUPPLY AND INSTALL BUSINESS SIGNS AS DIRECTED BY THE ENGINEER AND THE CITY.
13. CONTRACTOR TO COVER THE CONFLICTING SPEED LIMIT SIGNAGE AND OBLITERATE CONFLICTING PAVEMENT MARKINGS, SIGNS AND PAVEMENT MARKINGS TO BE REINSTATED UPON COMPLETION OF CONSTRUCTION.
14. DURING PHASE ONE OF THE WORK THE CONTRACTOR SHALL MAINTAIN A MINIMUM OF ONE USABLE LANE IN THE SOUTHBOUND LANES OF HURON CHURCH ROAD, BETWEEN GIRARDOT STREET AND TUCUMSEH ROAD. CONTRACTOR SHALL BE RESPONSIBLE FOR PROVIDING AND MAINTAINING ALL APPROPRIATE TRAFFIC CONTROL EQUIPMENT AND SIGNAGE, IN ACCORDANCE WITH THE ONTARIO TRAFFIC MANUAL, REQUIRED TO DELINEATE THE USABLE LANE AND TO MEET THE REQUIREMENTS OF THE ONTARIO TRAFFIC CONTROL MANUAL ALONG THE LENGTH OF THE LANE.

No.	REVISIONS	DATE	INIT.

ISSUED FOR TENDER DATE :  
DECEMBER 7, 2020

ISSUED FOR CONSTRUCTION DATE :

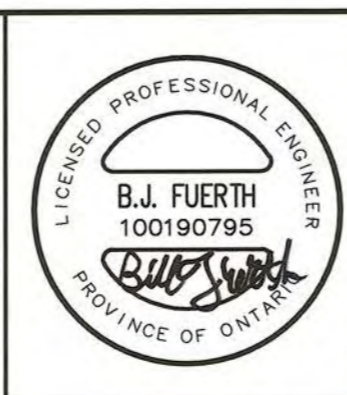
AS CONSTRUCTED DATE :

*[Signature]*  
TRAFFIC BRANCH  
TOP CHIEF OF POLICE

THIS TRAFFIC DETOUR PLAN MEETS THE REQUIREMENTS OF THE ONTARIO TRAFFIC MANUAL - BOOK 7.

*[Signature]*  
EXECUTIVE DIRECTOR  
OF OPERATIONS

SCALE  
1:500



DATE DRAWN:  
SEPT., 2020

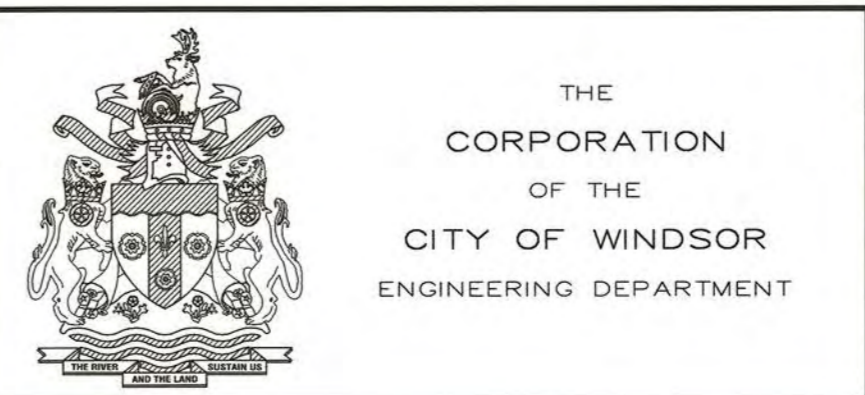
DRAWN BY:  
J. MUEGGE/A. CALA

CHECKED:  
P. UBENE

DESIGN:  
B. FUERTH

CHECKED:  
M. SPAGNUOLO

*[Signature]*  
MARK WINTERTON, P.Eng.  
CITY ENGINEER



2020 PAVEMENT REHABILITATION PROGRAMME

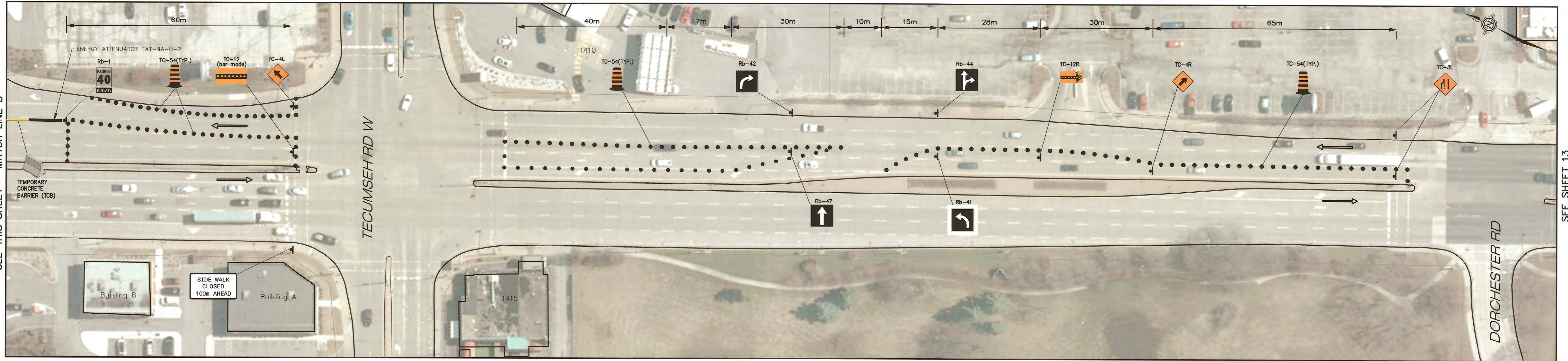
SUGGESTED MINIMUM SIGNAGE - STAGE 1

**HURON CHURCH ROAD**

FROM MALDEN ROAD TO NORTH OF TOTTEN STREET

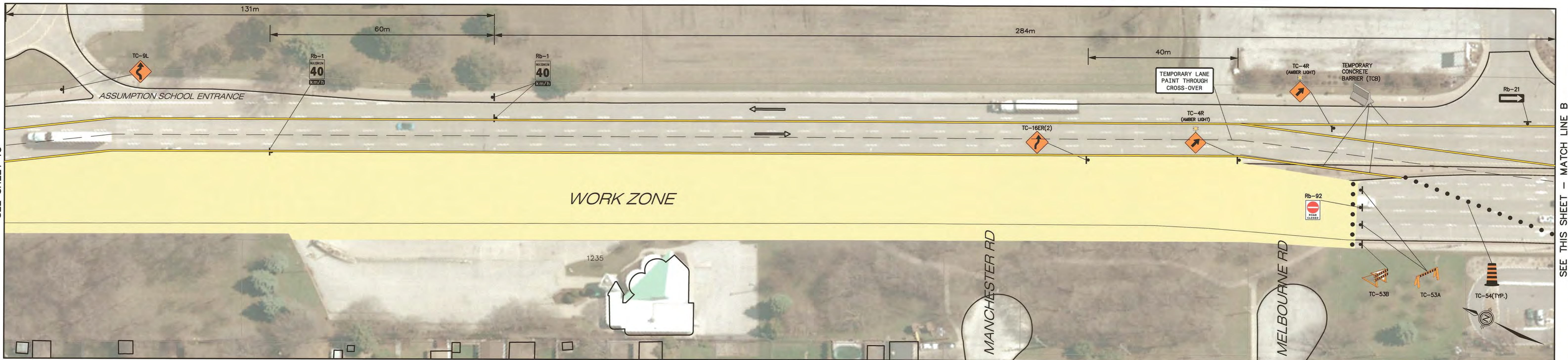
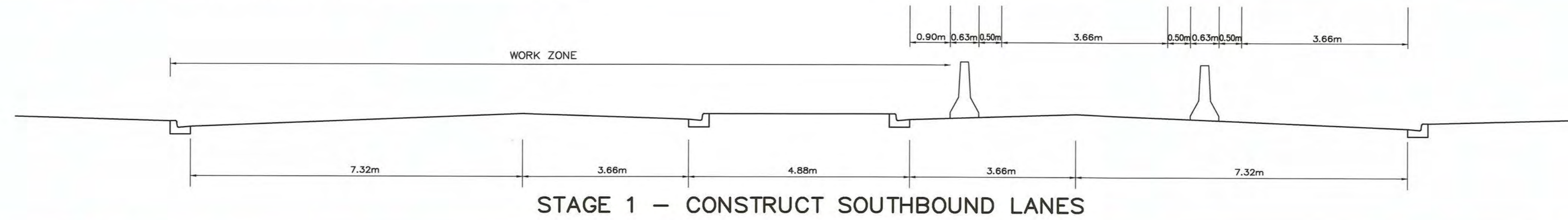
TENDER No.	162-20
ACCOUNT No.	7202007
DRAWING No.	P-2008
SHEET	13
OF	23

# HURON CHURCH ROAD



SEE THIS SHEET - MATCH LINE B

SEE SHEET 13

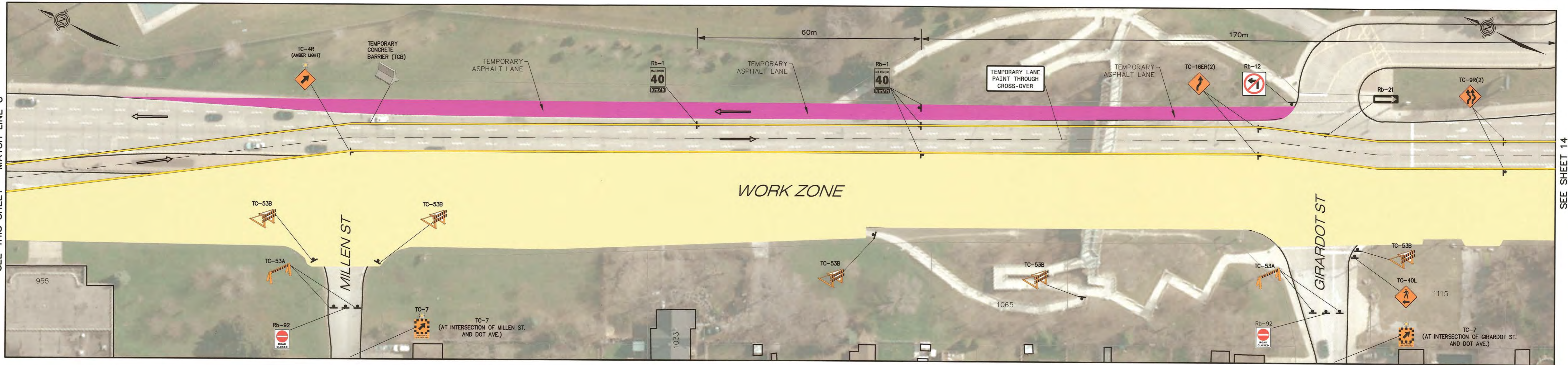


SEE SHEET 15

SEE THIS SHEET - MATCH LINE B

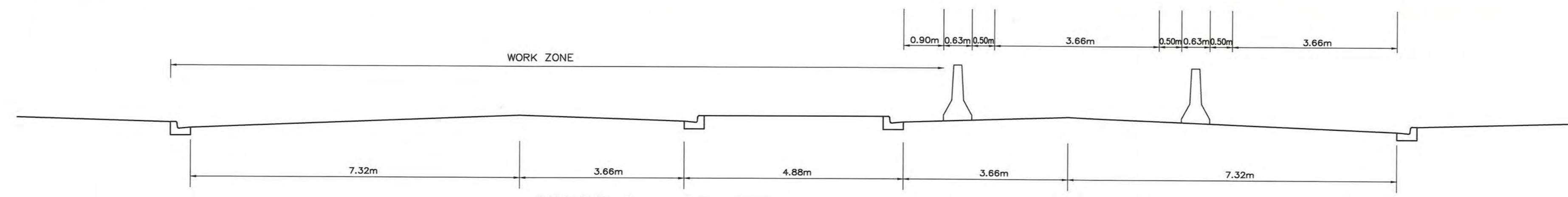
No.	REVISIONS	DATE	INIT.	ISSUED FOR TENDER DATE : DECEMBER 7, 2020	THIS TRAFFIC DETOUR PLAN MEETS THE REQUIREMENTS OF THE ONTARIO TRAFFIC MANUAL - BOOK 7.  SCALE 1:500	DATE DRAWN: SEPT., 2020 DRAWN BY: J. MUEGGE/A. CALA CHECKED: P. UBENE DESIGN: B. FUERTH CHECKED: M. SPAGNUOLO		THE CORPORATION OF THE CITY OF WINDSOR ENGINEERING DEPARTMENT	2020 PAVEMENT REHABILITATION PROGRAMME	TENDER No. 162-20
				ISSUED FOR CONSTRUCTION DATE :					ACCOUNT No. 7202007	
				AS CONSTRUCTED DATE :					DRAWING No. P-2008	
				 TRAFFIC BRANCH CHIEF OF POLICE	 EXECUTIVE DIRECTOR OF OPERATIONS	 MARK WINTERTON, P.Eng. CITY ENGINEER		SUGGESTED MINIMUM SIGNAGE - STAGE 1 HURON CHURCH ROAD FROM DORCHESTER RD TO ASSUMPTION SCHOOL ENTRANCE	SHEET 14	OF 23

# HURON CHURCH ROAD

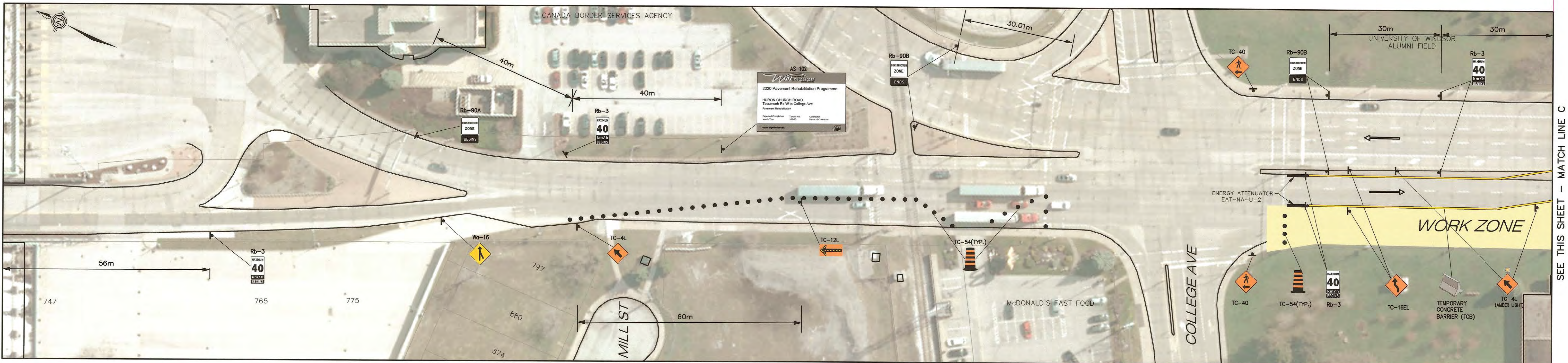


SEE THIS SHEET - MATCH LINE C

SEE SHEET 14



STAGE 1 - CONSTRUCT SOUTHBOUND LANES

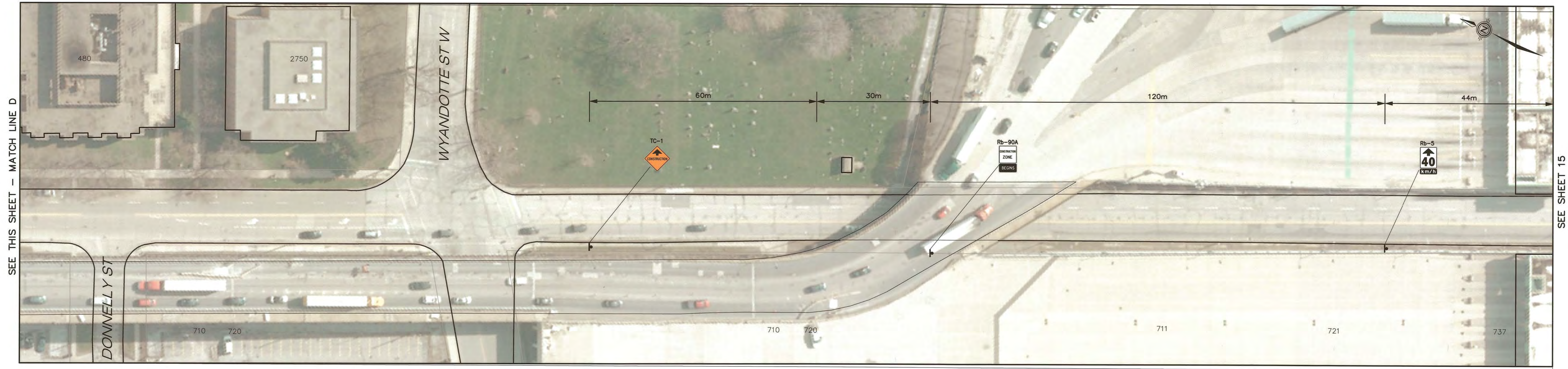


SEE SHEET 16

SEE THIS SHEET - MATCH LINE C

No.	REVISIONS	DATE	INIT.	ISSUED FOR TENDER DATE : DECEMBER 7, 2020	THIS TRAFFIC DETOUR PLAN MEETS THE REQUIREMENTS OF THE ONTARIO TRAFFIC MANUAL -BOOK 7.	SCALE  1:500		DATE DRAWN: SEPT., 2020		THE CORPORATION OF THE CITY OF WINDSOR ENGINEERING DEPARTMENT	2020 PAVEMENT REHABILITATION PROGRAMME  SUGGESTED MINIMUM SIGNAGE - STAGE 1 HURON CHURCH ROAD FROM GIRARDOT STREET TO MILL STREET	TENDER No. 162-20
				ISSUED FOR CONSTRUCTION DATE :				DRAWN BY: J. MUEGGE/A. CALA				ACCOUNT No. 7202007
				AS CONSTRUCTED DATE :				CHECKED: P. UBENE				DRAWING No. P-2008
								DESIGN: B. FUERTH				SHEET 15 OF 23
					EXECUTIVE DIRECTOR OF OPERATIONS			MARK WINTERTON, P.Eng. CITY ENGINEER				

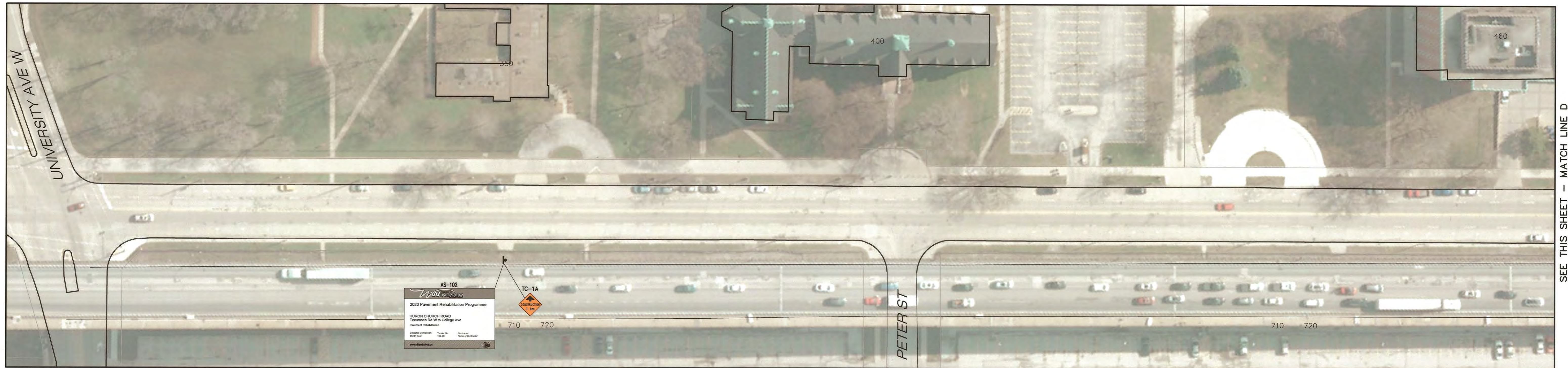
# HURON CHURCH ROAD



SEE THIS SHEET - MATCH LINE D

SEE SHEET 15

# HURON CHURCH ROAD



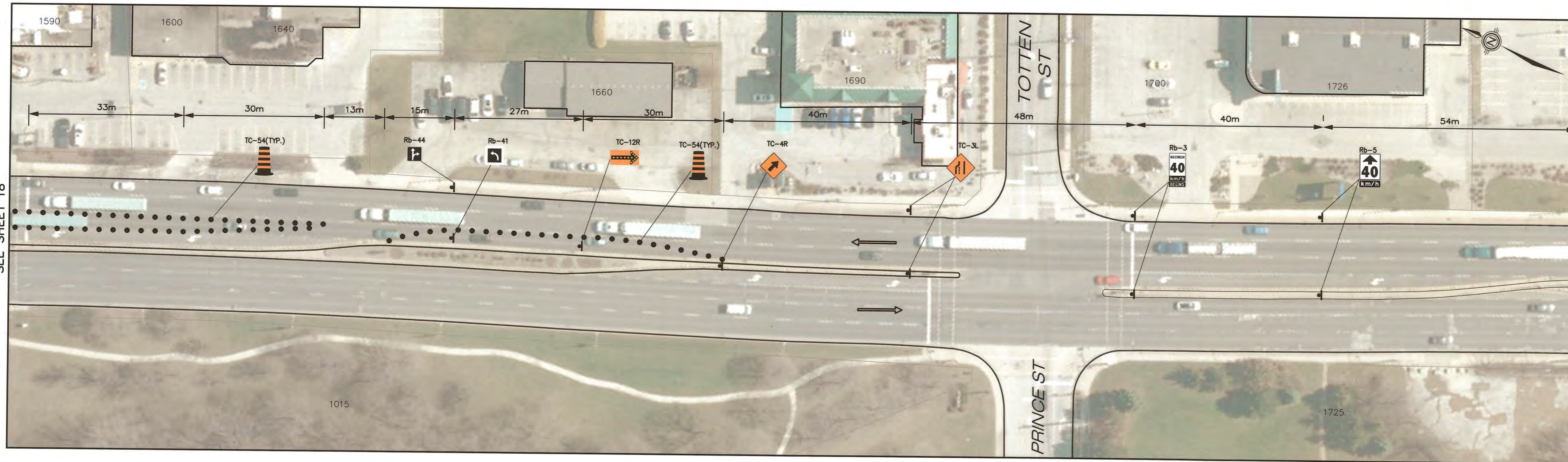
SEE THIS SHEET - MATCH LINE D

No.	REVISIONS	DATE	INIT.	ISSUED FOR TENDER DATE : DECEMBER 7, 2020	THIS TRAFFIC DETOUR PLAN MEETS THE REQUIREMENTS OF THE ONTARIO TRAFFIC MANUAL -BOOK 7.	SCALE  1:500		DATE DRAWN: SEPT., 2020	 MARK WINTERTON, P.Eng. CITY ENGINEER	 THE CORPORATION OF THE CITY OF WINDSOR ENGINEERING DEPARTMENT	2020 PAVEMENT REHABILITATION PROGRAMME	TENDER No. 162-20	
				ISSUED FOR CONSTRUCTION DATE :				DRAWN BY: J. MUEGGE/A. CALA CHECKED: P. UBENE DESIGN: B. FUERTH CHECKED: M. SPAGNUOLO			SUGGESTED MINIMUM SIGNAGE - STAGE 1 <b>HURON CHURCH ROAD</b> FROM NORTH OF MILL ST TO UNIVERSITY AVE W	ACCOUNT No. 7202007	
				AS CONSTRUCTED DATE :	 TRAFFIC BRANCH CHIEF OF POLICE						DRAWING No. P-2008	SHEET 16	OF 23

# HURON CHURCH ROAD



# HURON CHURCH ROAD



## PAVEMENT MARKINGS LEGEND

NAME OF LINE	DIMENSIONS (m)	USE
LONGITUDINAL (A)	0.10	EDGE LINES (WHITE OR YELLOW), DIRECTIONAL DIVIDING LINES (YELLOW), LANE LINES PROHIBITING LANE CHANGES (WHITE)

- WORK ZONE
- TEMPORARY ASPHALT
- TRAFFIC FLOW DIRECTION (FOR REFERENCE ONLY)

### GENERAL NOTES:

1. THIS DRAWING IS ONLY INTENDED TO SERVE AS A GUIDE TO THE CONTRACTOR AND IN NO WAY RELIEVES THE CONTRACTOR OF HIS OBLIGATIONS SO SPECIFIED IN THE CONTRACT DOCUMENTS.
2. ALL SIGNS SHALL CONFORM TO THE MOST RECENT EDITION OF ONTARIO TRAFFIC MANUAL - BOOK 7.
3. ALL SIGNS, BARRICADES AND LIGHTS SHALL BE INSPECTED REGULARLY AND MAINTAINED BY THE CONTRACTOR.
4. REFLECTORIZED MATERIALS ARE TO BE USED IN THE MANUFACTURE OF SIGNS IN ACCORDANCE WITH ONTARIO TRAFFIC MANUAL - BOOK 7.
5. DRAWINGS SHOW THE MINIMUM SUGGESTED REQUIREMENTS FOR SIGNAGE, BARRICADES ETC. THE CONTRACTOR SHALL ADD ANY SIGNS OR BARRICADES REQUIRED TO SAFELY PERFORM THEIR WORK AND SAFELY AND EFFECTIVELY GUIDE TRAFFIC THROUGH THE CONSTRUCTION AREA AT NO EXTRA COST TO THE CONTRACTOR.
6. ACCESS TO DRIVEWAYS TO BE MAINTAINED DURING CONSTRUCTION. NO DRIVEWAY ACCESS TO BE OBSTRUCTED OVERNIGHT.
7. TRAFFIC CONTROL PERSONS TO BE USED AS NECESSARY.
8. CONTRACTOR SHALL PREPARE AND SUBMIT A TRAFFIC CONTROL AND PROTECTION PLAN FOR REVIEW BY THE ENGINEER, TWO WEEKS IN ADVANCE OF EACH STAGE OF CONSTRUCTION.
9. CONTRACTOR MUST COORDINATE SIGNAGE WITH OTHER CONSTRUCTION PROJECTS THAT MAY BE IN THE AREA.
10. CONTRACTOR TO NOTIFY AND UPDATE EMERGENCY SERVICES OF TRAFFIC CONTROL PRIOR TO THE START OF EACH STAGE OF CONSTRUCTION.
11. CONTRACTOR TO SUPPLY AND INSTALL SIGNAGE AND FACILITIES AS REQUIRED TO DIRECT PEDESTRIANS.
12. CONTRACTOR TO SUPPLY AND INSTALL BUSINESS SIGNS AS DIRECTED BY THE ENGINEER AND THE CITY.
13. CONTRACTOR TO COVER THE CONFLICTING SPEED LIMIT SIGNAGE AND OBLITERATE CONFLICTING PAVEMENT MARKINGS. SIGNS AND PAVEMENT MARKINGS TO BE REINSTATED UPON COMPLETION OF CONSTRUCTION.
14. DURING PHASE ONE OF THE WORK THE CONTRACTOR SHALL MAINTAIN A MINIMUM OF ONE USABLE LANE IN THE SOUTHBOUND LANES OF HURON CHURCH ROAD, BETWEEN GHARDOT STREET AND TECUMSEH ROAD. CONTRACTOR SHALL BE RESPONSIBLE FOR PROVIDING AND MAINTAINING ALL APPROPRIATE TRAFFIC CONTROL EQUIPMENT AND SIGNAGE, IN ACCORDANCE WITH THE ONTARIO TRAFFIC MANUAL, REQUIRED TO DELINEATE THE USABLE LANE AND TO MEET THE REQUIREMENTS OF ONTARIO TRAFFIC CONTROL MANUAL ALONG THE LENGTH OF THE LANE.

No.	REVISIONS	DATE	INIT.	ISSUED FOR TENDER DATE :	ISSUED FOR CONSTRUCTION DATE :	AS CONSTRUCTED DATE :
				DECEMBER 7, 2020		

THIS TRAFFIC DETOUR PLAN MEETS THE REQUIREMENTS OF THE ONTARIO TRAFFIC MANUAL - BOOK 7.

SCALE  
1:500

TRAFFIC BRANCH  
for CHIEF OF POLICE

EXECUTIVE DIRECTOR  
OF OPERATIONS

DATE DRAWN:  
SEPT., 2020

DRAWN BY:  
J. MUEGGE/A. CALA

CHECKED:  
P. UBENE

DESIGN:  
B. FUERTH

CHECKED:  
M. SPAGNUOLO

MARK WINTERTON, P.Eng.  
CITY ENGINEER

THE CORPORATION OF THE CITY OF WINDSOR ENGINEERING DEPARTMENT

2020 PAVEMENT REHABILITATION PROGRAMME

TENDER No. 162-20

ACCOUNT No. 7202007

DRAWING No. P-2008

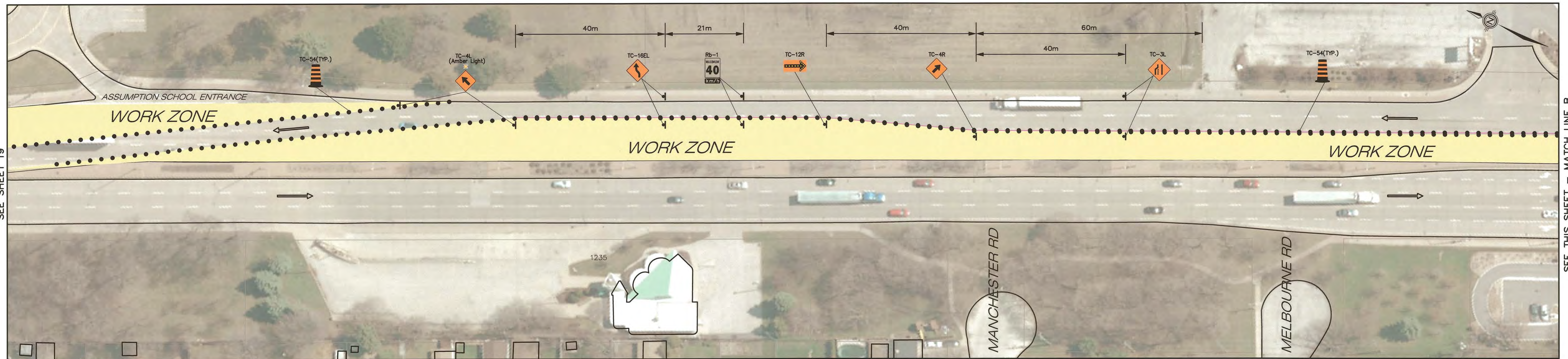
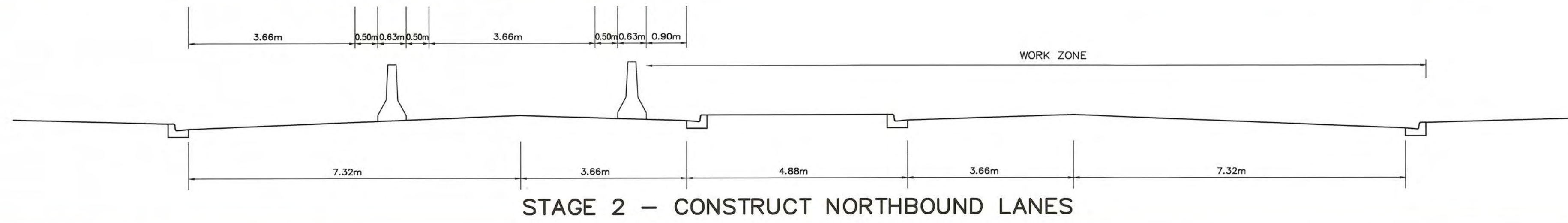
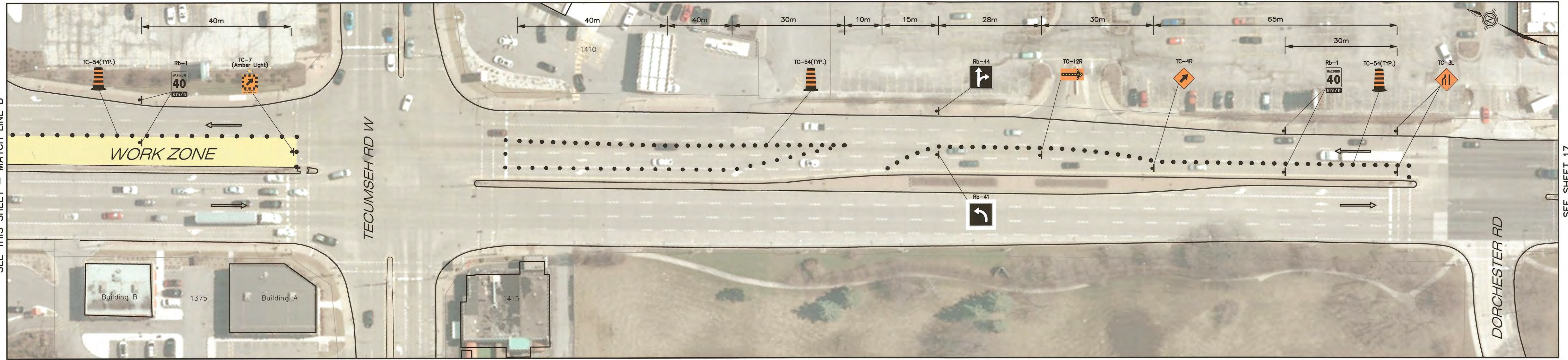
SHEET 17 OF 23

SUGGESTED MINIMUM SIGNAGE - STAGE 2

HURON CHURCH ROAD

FROM MALDEN ROAD TO NORTH OF TOTTEN STREET

# HURON CHURCH ROAD



No.	REVISIONS	DATE	INIT.

ISSUED FOR TENDER DATE :  
DECEMBER 7, 2020

ISSUED FOR CONSTRUCTION DATE :

AS CONSTRUCTED DATE :

THIS TRAFFIC DETOUR PLAN MEETS THE REQUIREMENTS OF THE ONTARIO TRAFFIC MANUAL -BOOK 7.

SCALE  
1:500

*[Signature]*  
TRAFFIC BRANCH  
for CHIEF OF POLICE

*[Signature]*  
EXECUTIVE DIRECTOR  
OF OPERATIONS

SCALE  
1:500



DATE DRAWN:  
SEPT., 2020

DRAWN BY:  
J. MUEGGE/A. CALA

CHECKED:  
P. UBENE

DESIGN:  
B. FUERTH

CHECKED:  
M. SPAGNUOLO

*[Signature]*  
MARK WINTERTON, P.Eng.  
CITY ENGINEER



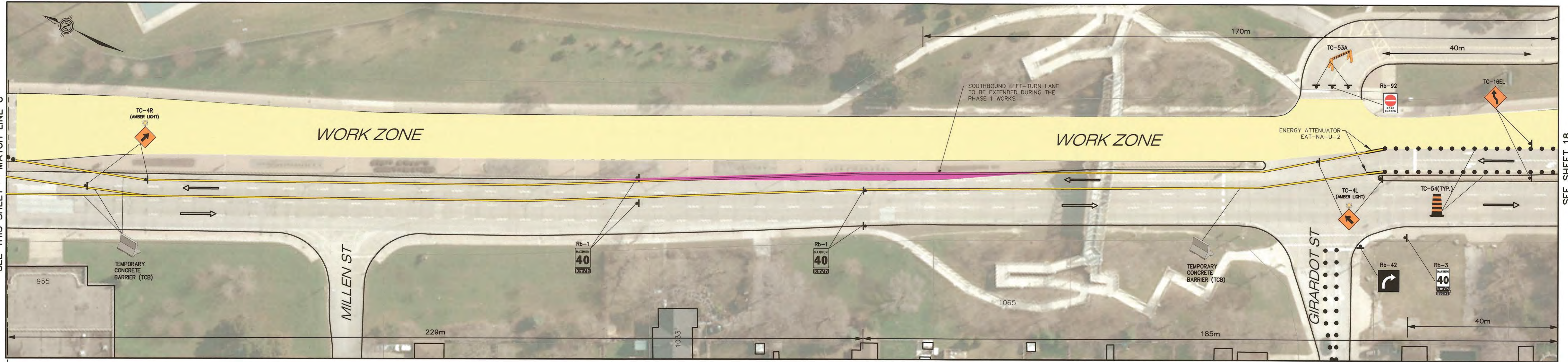
THE CORPORATION  
OF THE  
CITY OF WINDSOR  
ENGINEERING DEPARTMENT

2020 PAVEMENT REHABILITATION PROGRAMME

SUGGESTED MINIMUM SIGNAGE - STAGE 2  
HURON CHURCH ROAD  
FROM DORCHESTER RD TO ASSUMPTION SCHOOL ENTRANCE

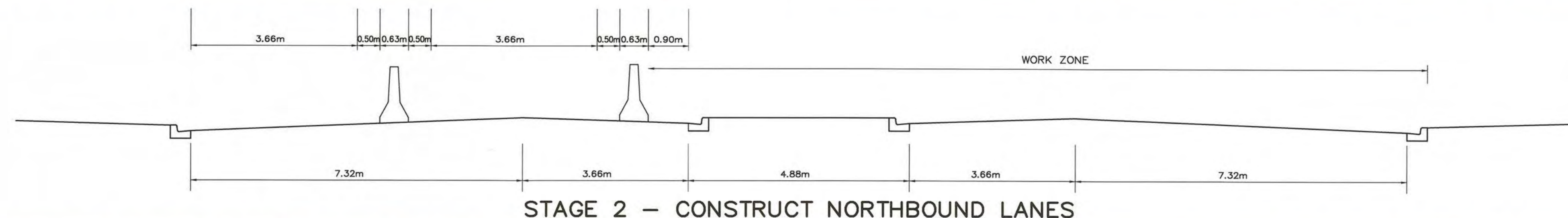
TENDER No.	162-20
ACCOUNT No.	7202007
DRAWING No.	P-2008
SHEET	18
OF	23

# HURON CHURCH ROAD

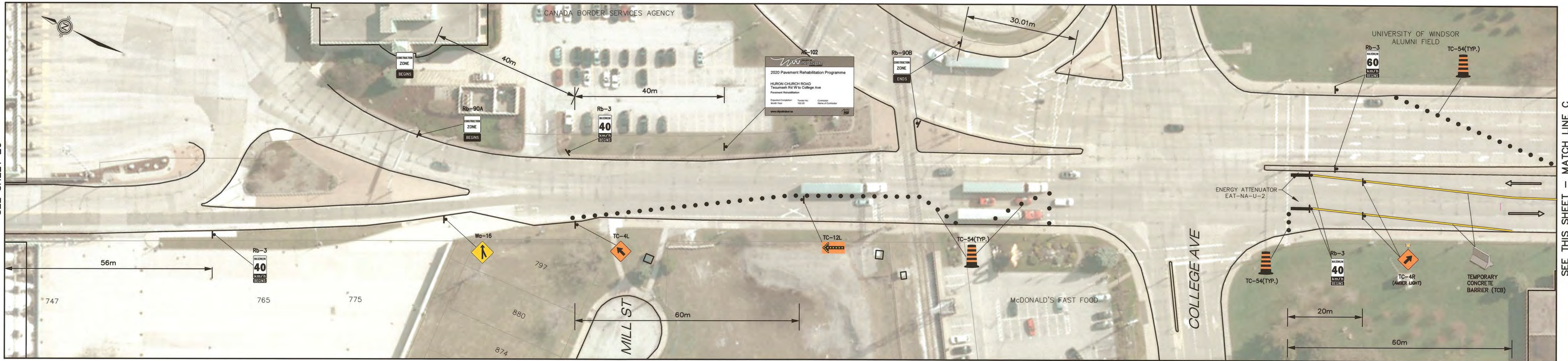


SEE THIS SHEET - MATCH LINE C

SEE SHEET 18



STAGE 2 - CONSTRUCT NORTHBOUND LANES



SEE SHEET 20

SEE THIS SHEET - MATCH LINE C

No.	REVISIONS	DATE	INIT.	ISSUED FOR TENDER DATE : DECEMBER 7, 2020	THIS TRAFFIC DETOUR PLAN MEETS THE REQUIREMENTS OF THE ONTARIO TRAFFIC MANUAL -BOOK 7.  SCALE 1:500	DATE DRAWN: SEPT., 2020 DRAWN BY: J. MUEGGE/A. CALA CHECKED: P. UBENE DESIGN: B. FUERTH CHECKED: M. SPAGNUOLO		THE CORPORATION OF THE CITY OF WINDSOR ENGINEERING DEPARTMENT	2020 PAVEMENT REHABILITATION PROGRAMME SUGGESTED MINIMUM SIGNAGE - STAGE 2 HURON CHURCH ROAD FROM GIRARDOT STREET TO MILL STREET	TENDER No. 162-20	
				ISSUED FOR CONSTRUCTION DATE :						ACCOUNT No. 7202007	
				AS CONSTRUCTED DATE :						DRAWING No. P-2008	
				TRAFFIC BRANCH for CHIEF OF POLICE	EXECUTIVE DIRECTOR OF OPERATIONS					SHEET 19	OF 23

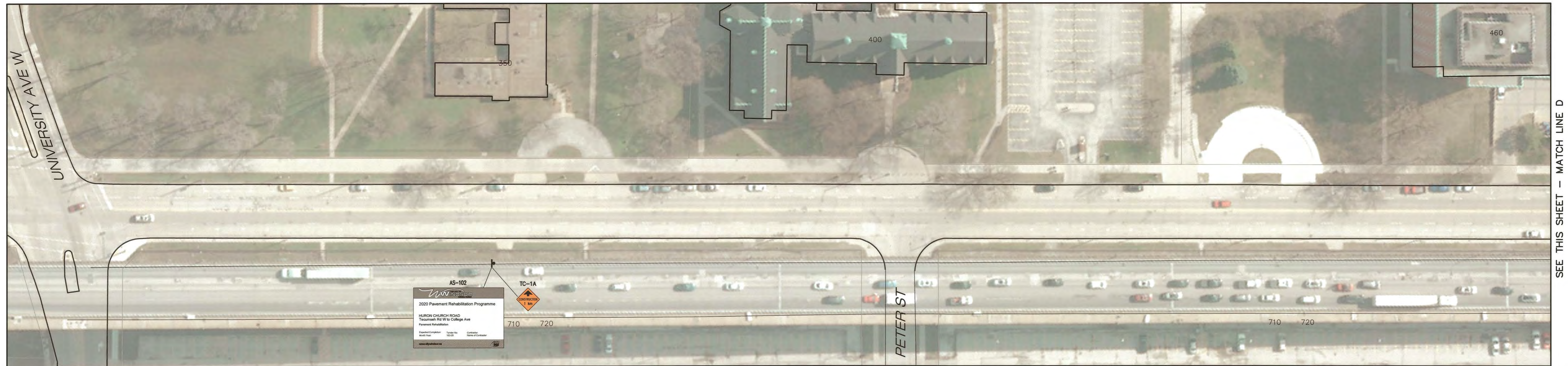
# HURON CHURCH ROAD



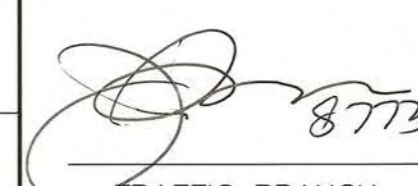
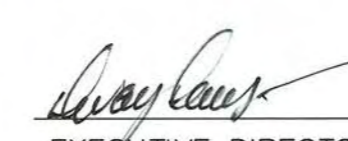



SEE THIS SHEET - MATCH LINE D

SEE SHEET 19

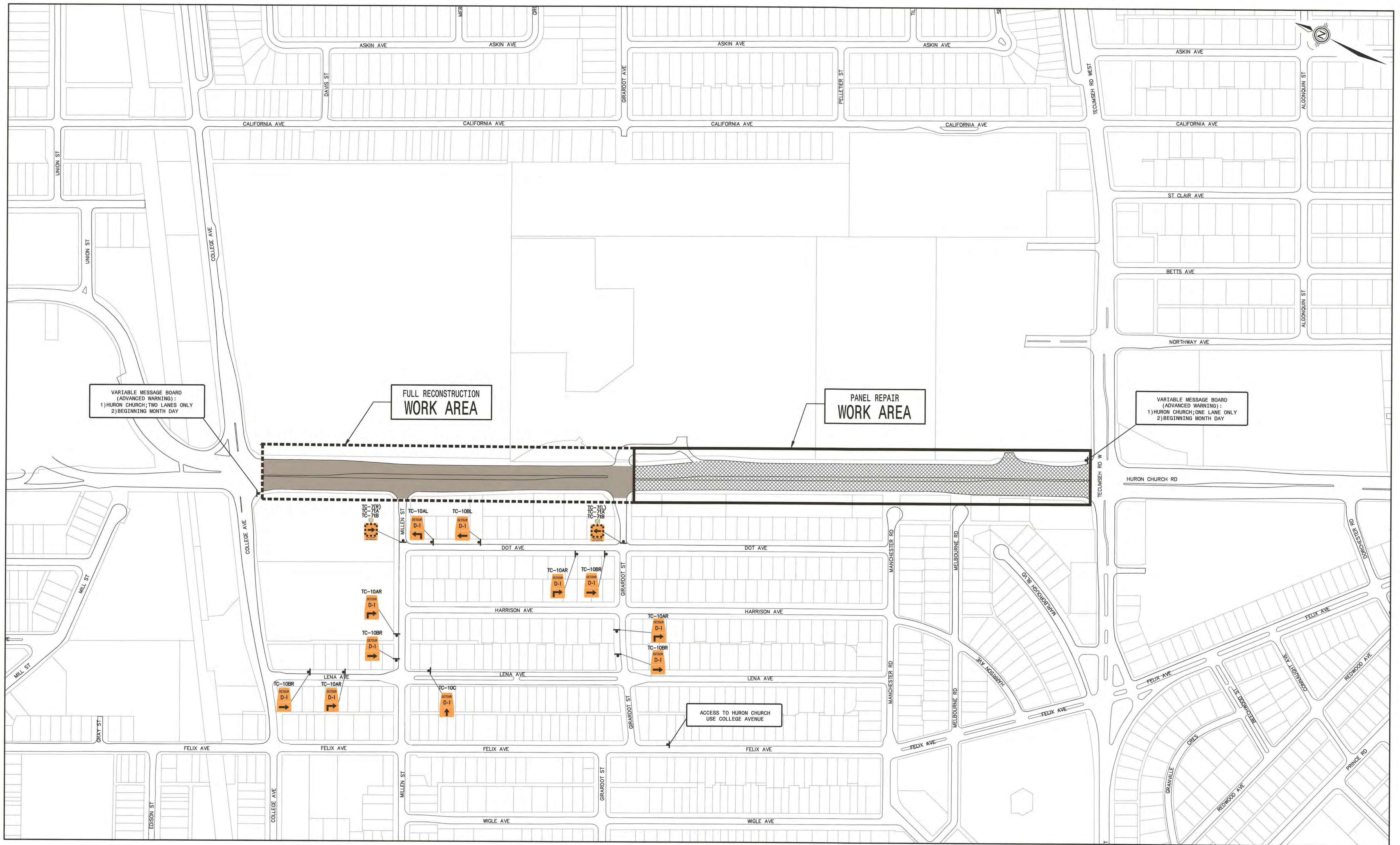
# HURON CHURCH ROAD



SEE THIS SHEET - MATCH LINE D

No.	REVISIONS	DATE	INIT.	ISSUED FOR TENDER DATE : DECEMBER 7, 2020	 TRAFFIC BRANCH for CHIEF OF POLICE	THIS TRAFFIC DETOUR PLAN MEETS THE REQUIREMENTS OF THE ONTARIO TRAFFIC MANUAL -BOOK 7.   EXECUTIVE DIRECTOR OF OPERATIONS	SCALE  1: 500		DATE DRAWN: SEPT., 2020	 MARK WINTERTON, P.Eng. CITY ENGINEER	 THE CORPORATION OF THE CITY OF WINDSOR ENGINEERING DEPARTMENT	2020 PAVEMENT REHABILITATION PROGRAMME	TENDER No. 162-20
				ISSUED FOR CONSTRUCTION DATE :					ACCOUNT No. 7202007				
				AS CONSTRUCTED DATE :					DRAWING No. P-2008				
												SHEET 20	OF 23





VARIABLE MESSAGE BOARD  
(ADVANCED WARNING):  
1) HURON CHURCH; TWO LANES ONLY  
2) BEGINNING MONTH DAY

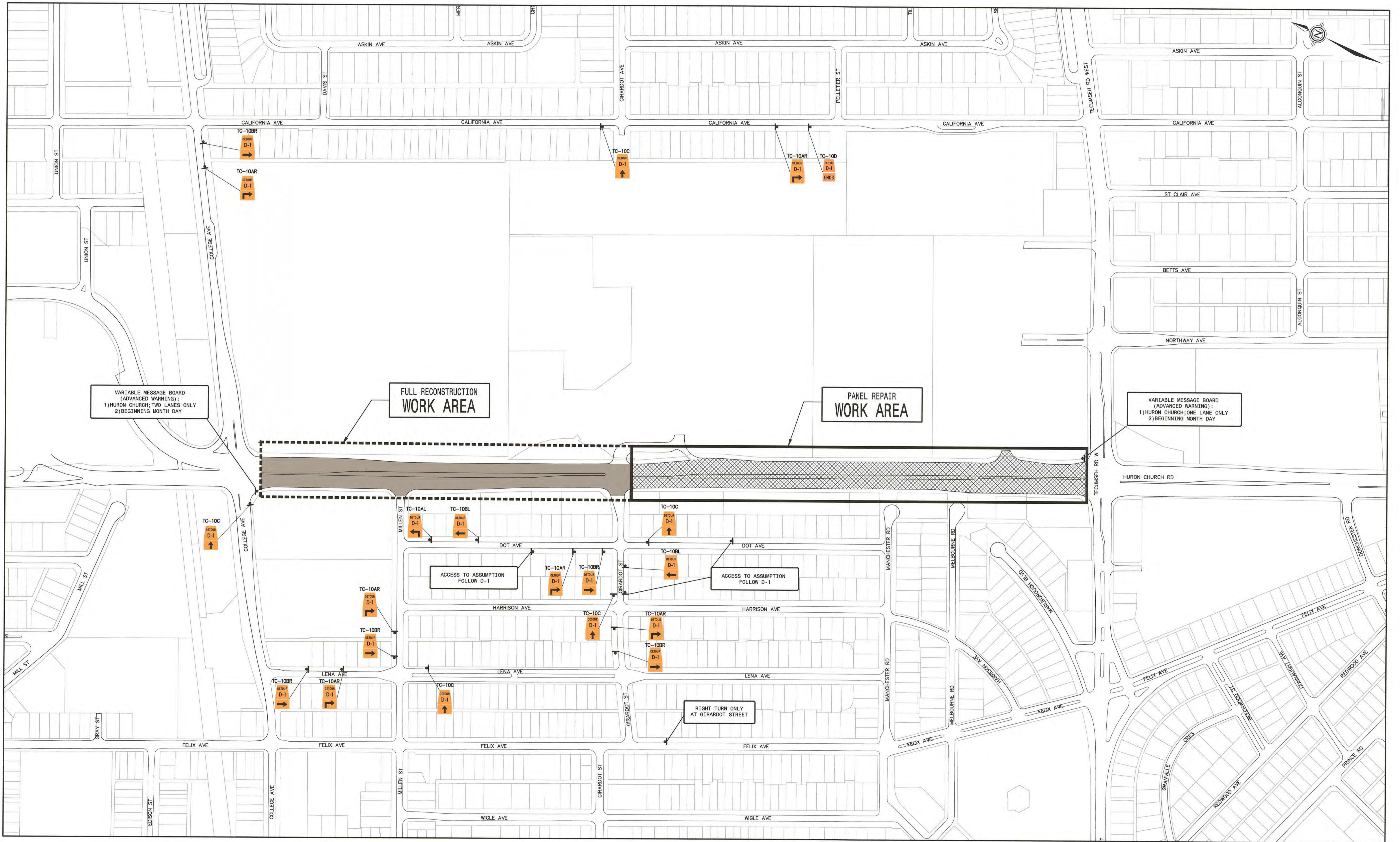
FULL RECONSTRUCTION  
WORK AREA

PANEL REPAIR  
WORK AREA

VARIABLE MESSAGE BOARD  
(ADVANCED WARNING):  
1) HURON CHURCH; ONE LANE ONLY  
2) BEGINNING MONTH DAY

ACCESS TO HURON CHURCH  
USE COLLEGE AVENUE

No.	REVISIONS	DATE	INIT.	ISSUED FOR TENDER DATE : DECEMBER 7, 2020	THIS TRAFFIC DETOUR PLAN MEETS THE REQUIREMENTS OF THE ONTARIO TRAFFIC MANUAL -BOOK 7.	SCALE  1:500		DATE DRAWN: SEPT., 2020	 MARK WINTERTON, P.Eng. CITY ENGINEER	 THE CORPORATION OF THE CITY OF WINDSOR ENGINEERING DEPARTMENT	2020 PAVEMENT REHABILITATION PROGRAMME  OFF SITE SIGNAGE STAGE 1	TENDER No. 162-20	
				ISSUED FOR CONSTRUCTION DATE :				CHECKED: P. UBENE				ACCOUNT No. 7202007	
				AS CONSTRUCTED DATE :				DESIGN: B. FUERTH				DRAWING No. P-2008	
								CHECKED: M. SPAGNUOLO				SHEET 21	OF 23



No.	REVISIONS	DATE	INIT.

ISSUED FOR TENDER DATE :  
 DECEMBER 7, 2020

ISSUED FOR CONSTRUCTION DATE :

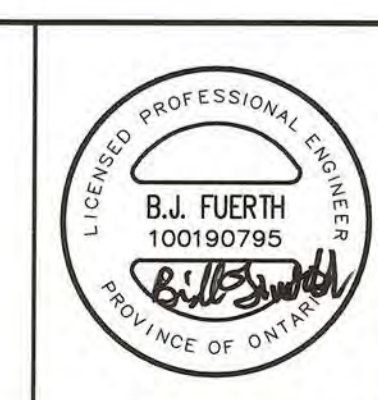
AS CONSTRUCTED DATE :

*[Signature]*  
 TRAFFIC BRANCH  
 CHIEF OF POLICE

*[Signature]*  
 EXECUTIVE DIRECTOR  
 OF OPERATIONS

THIS TRAFFIC DETOUR PLAN MEETS THE REQUIREMENTS OF THE ONTARIO TRAFFIC MANUAL -BOOK 7.

SCALE  
 1: 500



DATE DRAWN:  
 SEPT., 2020

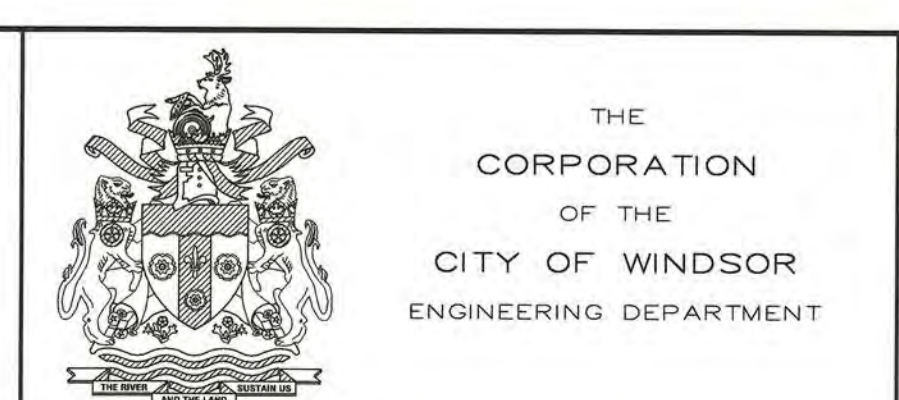
DRAWN BY:  
 J. MUEGGE/A. CALA

CHECKED:  
 P. UBENE

DESIGN:  
 B. FUERTH

CHECKED:  
 M. SPAGNUOLO

*[Signature]*  
 MARK WINTERTON, P.Eng.  
 CITY ENGINEER



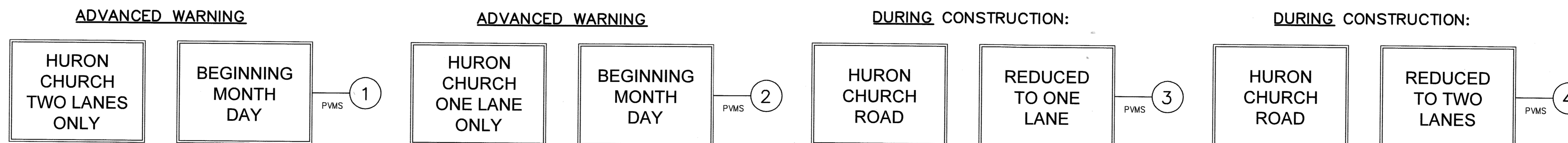
2020 PAVEMENT REHABILITATION PROGRAMME

**OFF SITE SIGNAGE  
 STAGE 2**

TENDER No.	162-20
ACCOUNT No.	7202007
DRAWING No.	P-2008
SHEET	22
OF	23



HURON CHURCH ROAD – COLLEGE AVENUE TO TECUMSEH ROAD WEST  
WINDSOR, ONTARIO VARIABLE MESSAGE BOARD SIGNAGE  
N.T.S.



No.	REVISIONS	DATE	INIT.	ISSUED FOR TENDER DATE : DECEMBER 7, 2020	THIS TRAFFIC DETOUR PLAN MEETS THE REQUIREMENTS OF THE ONTARIO TRAFFIC MANUAL -BOOK 7.	SCALES  N.T.S.		DATE DRAWN: SEPT., 2020	 MARK WINTERTON, P.Eng. CITY ENGINEER	 THE CORPORATION OF THE CITY OF WINDSOR ENGINEERING DEPARTMENT	2020 PAVEMENT REHABILITATION PROGRAMME	TENDER No. 162-20
				ISSUED FOR CONSTRUCTION DATE :				CHECKED BY: P. UBENE			ACCOUNT No. 7202007	
				AS CONSTRUCTED DATE :				DESIGN: B. FUERTH			DRAWING No. P-2008	
				TRAFFIC BRANCH FOR CHIEF OF POLICE				CHECKED: M. SPAGNUOLO			SHEET 23 OF 23	