

LITTLE RIVER FLOOD PROTECTION DYKES

July 13, 2017
WFCU Centre

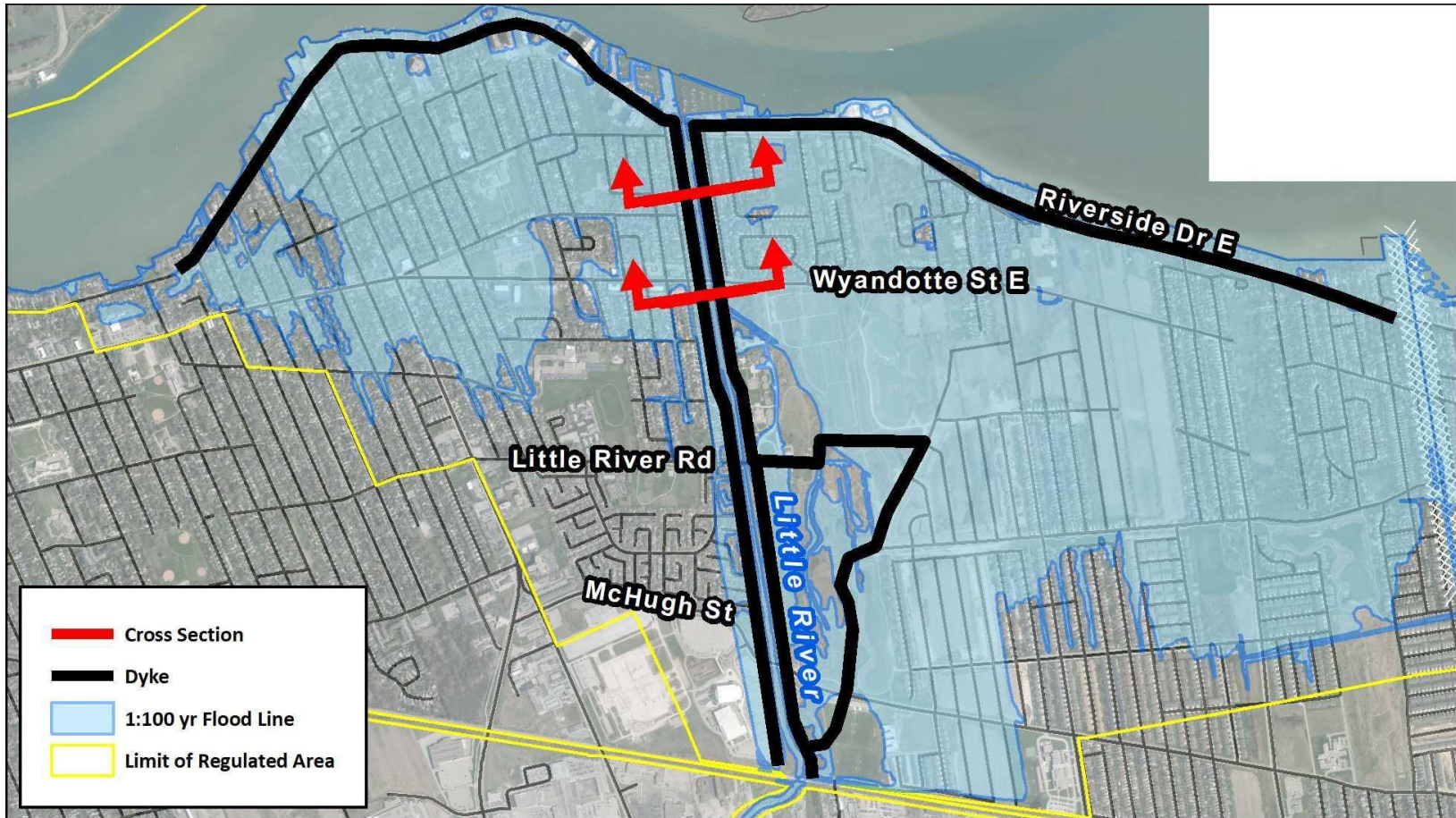


Essex Region
Conservation Authority
sustaining the place for life

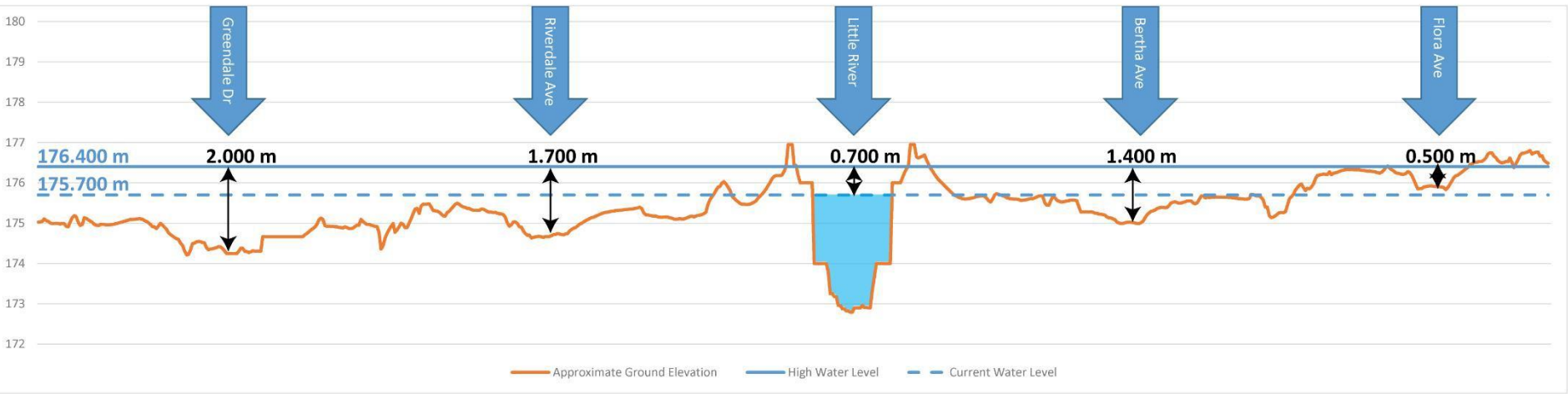
Lake St. Clair 1:100 Year Floodplain



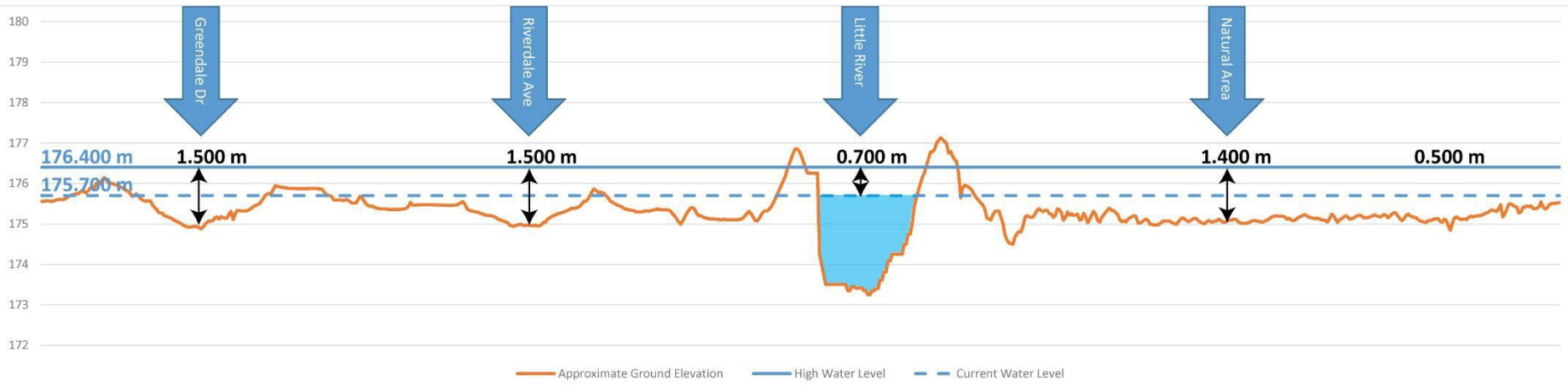
Earth Dykes and Barrier Landforms



Cross-Section between Riverside Drive East and Wyandotte Street East



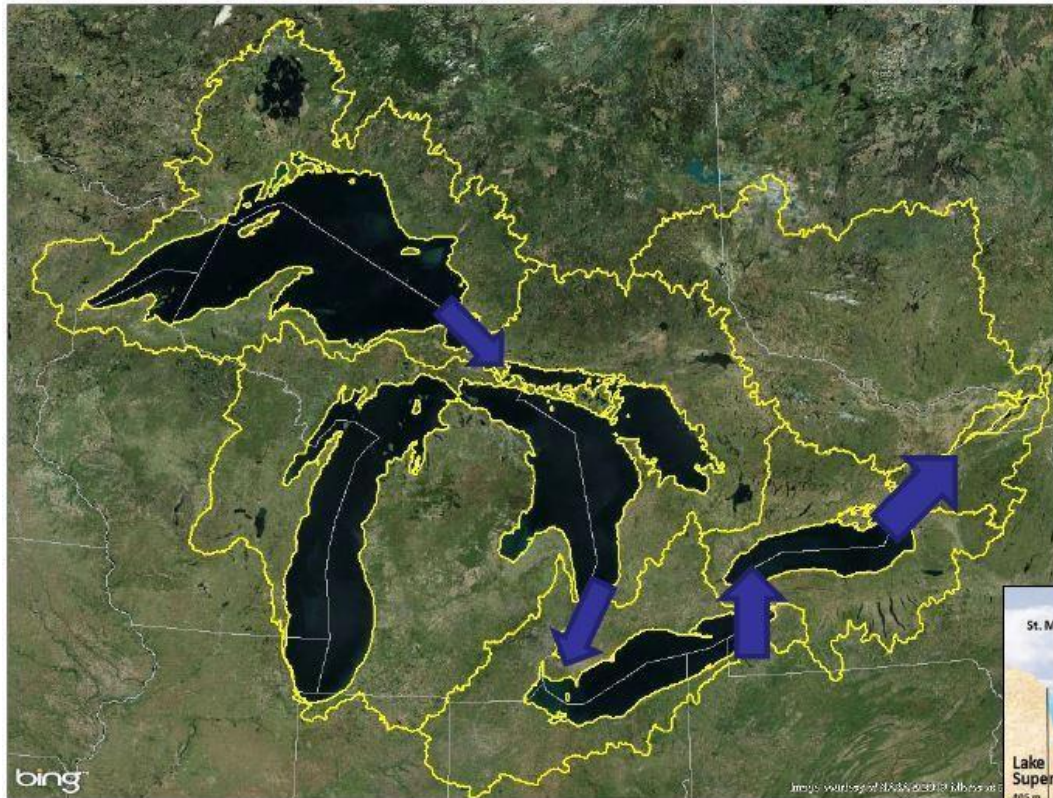
Cross-Section south of Wyandotte Street East



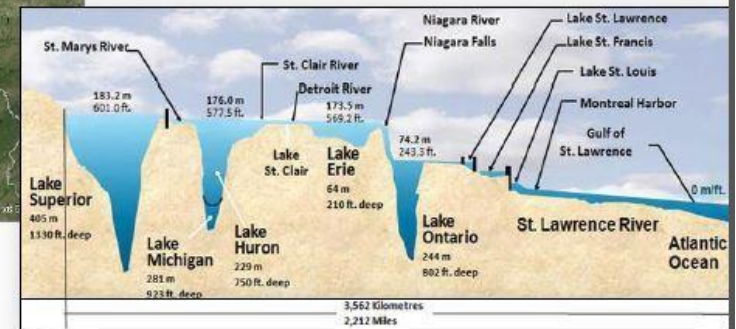
Bridge at Riverside Drive East



The Great Lakes – St. Lawrence System



	Surface Area
Superior	82,100 km ²
Michigan-Huron	117,000 km ²
Erie	25,700 km ²
Ontario	19,000 km ²
	Volume
Superior	12,100 km ³
Michigan-Huron	8,460 km ³
Erie	484 km ³
Ontario	1,640 km ³



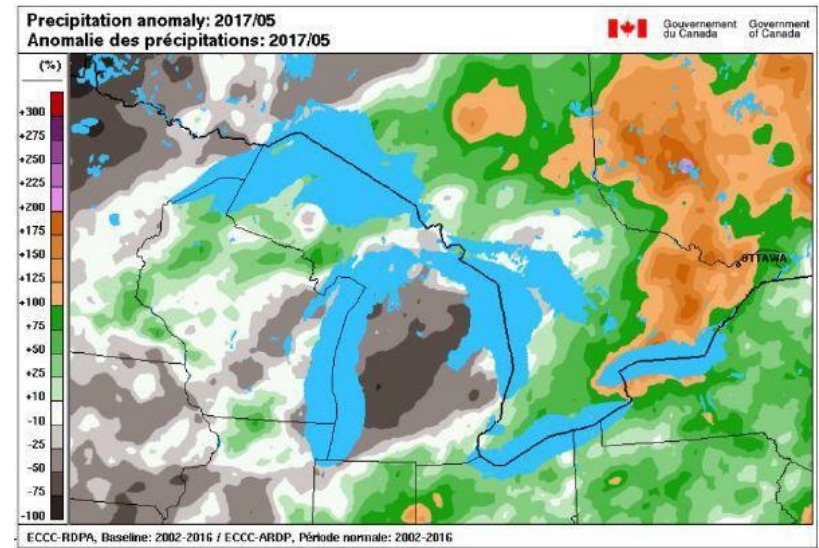
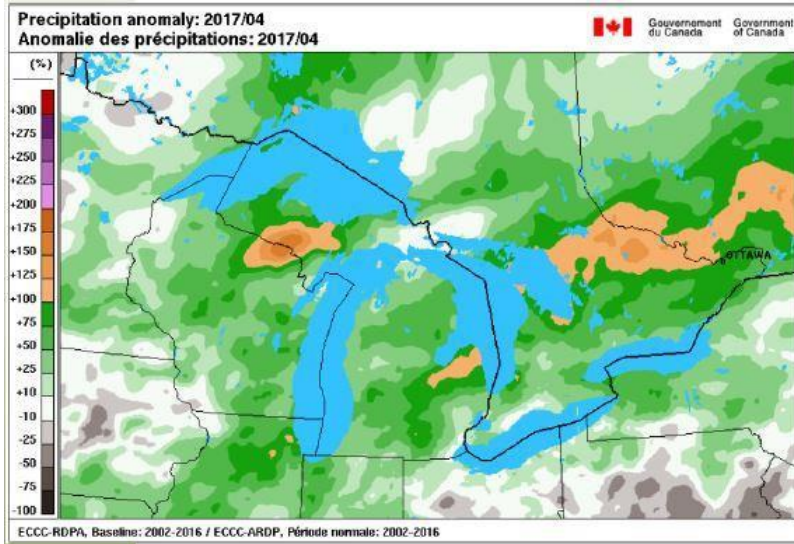
Environment and
Climate Change Canada

Environnement et
Changement climatique Canada

Canada



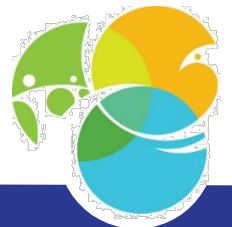
Recent Precipitation Events



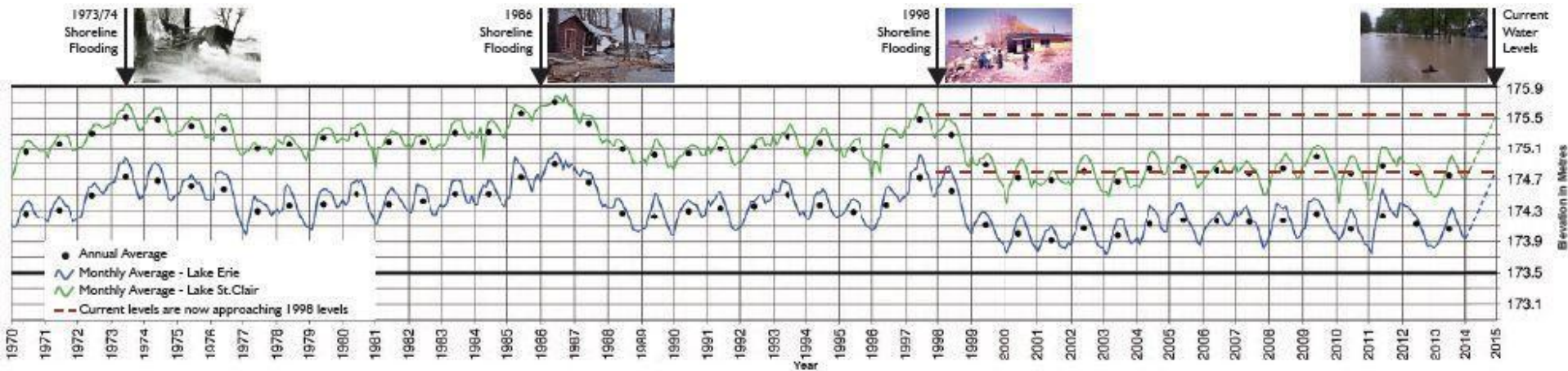
Environment and
Climate Change Canada

Environnement et
Changement climatique Canada

Canada



Lake Erie and Lake St. Clair



Little River – Little River Pump Station at Riverside Drive East



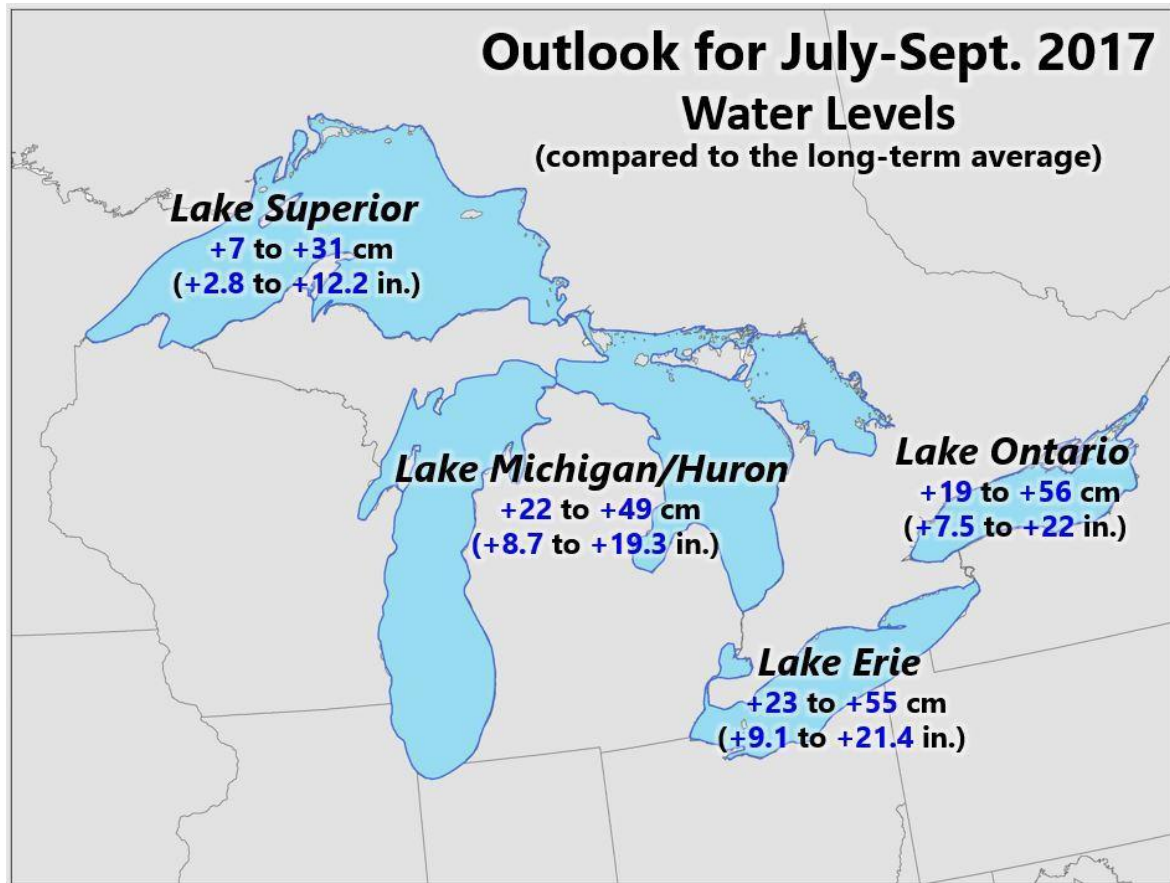
March 2015



June 2017



Future Outlook



90 % Probability
range for lake
levels



Environment and
Climate Change Canada

Environnement et
Changement climatique Canada

Canada



Recent Storm Events



Recent Storm Events

