

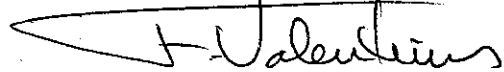
**REPORT NO. 127 of the
ENVIRONMENT, TRANSPORTATION & PUBLIC SAFETY
STANDING COMMITTEE**
of its meeting held March 20, 2013

Present: **Councillor J. Gignac**
 Councillor A. Halberstadt
 Councillor R. Jones,
 Councillor H. Payne
 Councillor F. Valentinis, Chair

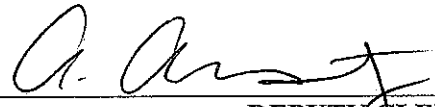
That the following recommendations of the Environment, Transportation and Public Safety Standing Committee **BE APPROVED:**

Moved by Councillor Payne, seconded by Councillor Halberstadt,
THAT the minutes of the Windsor Essex County Environment Committee meeting held February 7, 2013 **BE RECEIVED** for information.
Carried.

Clerk's Note: The minutes of the Windsor Essex County Environment Committee meeting held February 7, 2013 are attached as background information.

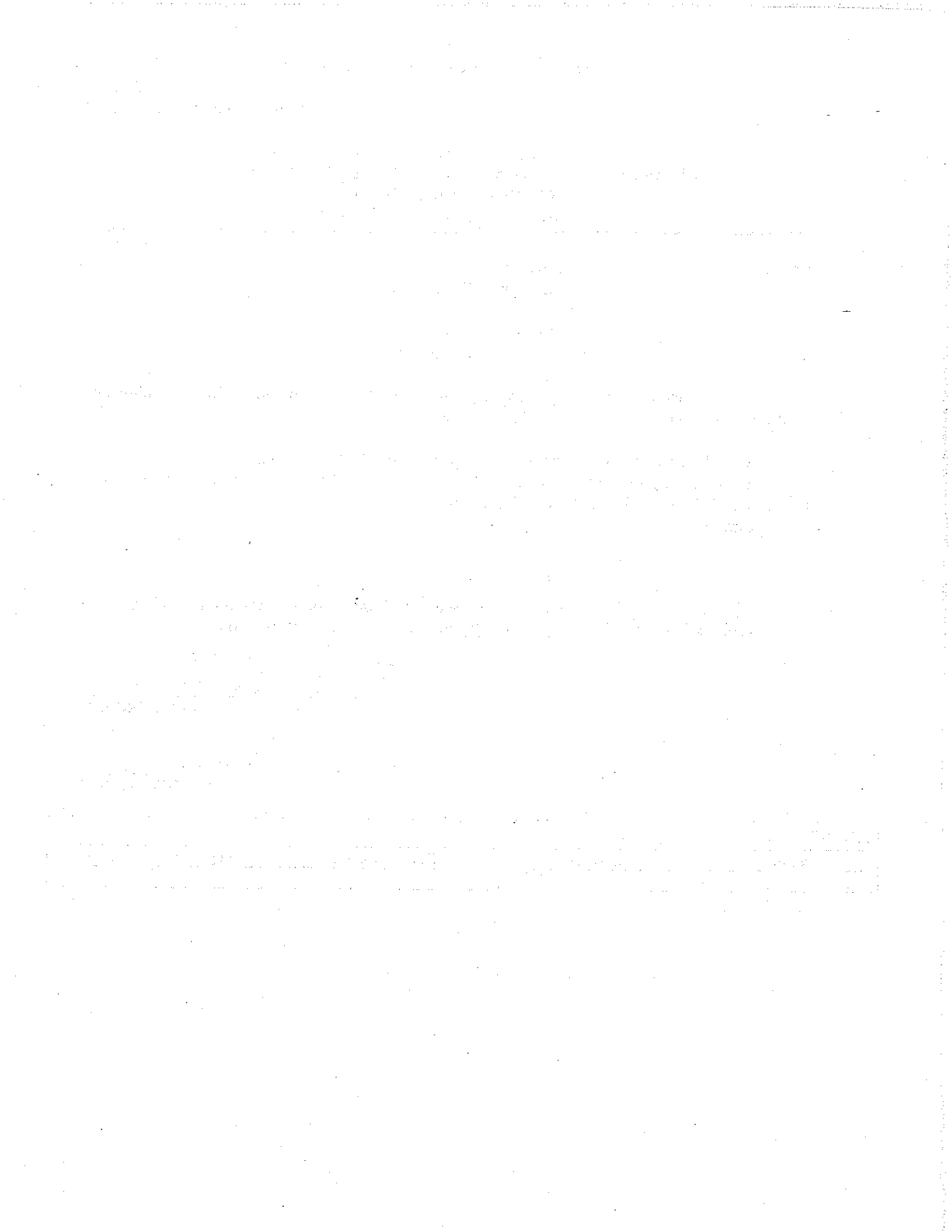


CHAIRPERSON



DEPUTY CLERK

NOTIFICATION:				
Name	Address	Email Address	Telephone	FAX



KK/
Windsor, Ontario February 7, 2013

A meeting of the **Windsor Essex County Environment Committee** is held this day commencing at 5:30 o'clock p.m. in the Board Room, Lou Romano Water Reclamation Plant, 4155 Ojibway Parkway, there being present the following members:

Charlie Wright, Co-Chair
Alan Halberstadt, Co-Chair
Councillor Hilary Payne
Mark Bartlett
Pauline Cheslock
Dean Clevett (arrives at 5:37 p.m.)
Derek Coronado
Rick Coronado
Jesse Costa Gardner
Roger Dzugan (alternate for Mark Bartlett)
Paul Henshaw
Tamara Stomp
Radwan Tamr (arrives at 6:02 p.m.)

Guests in attendance:

Richard Wyma, Director, Essex Region Conservation Authority (ERCA)
Chitra Gowda, Water Quality Specialist, ERCA

Regrets received from:

Evan Freeman-Gibb
Karen Fallon
John Miller
Mike Nelson
Phil Roberts

Also present are the following resource personnel:

James Bryant, County Engineering Department
Beau Wansbrough, Planner II
Karen Kadour, Committee Coordinator

1. CALL TO ORDER

Charlie Wright, Co-Chair calls the meeting to order at 5:32 o'clock p.m. and the Committee considers the Agenda being Schedule "A" attached hereto, matters which are dealt with as follows:

2. DECLARATIONS OF CONFLICT

None disclosed.

3. MINUTES

Moved by R. Dzugan, seconded by P. Cheslock,
That the minutes of the Windsor Essex County Environment Committee at its meeting held January 7, 2013 **BE ADOPTED** as presented.
Carried.

4. PRESENTATION

Richard Wyma, Director, Essex Region Conservation Authority is present to provide information relating to the Trail On Campaign and Canada's response to the International Wildlife Reserve. A brochure entitled "Essex Region Conservation Authority – Greenways & Trails Trail on Campaign" is distributed and attached as Appendix "A".

The salient points of discussion relating to the Trail On Campaign are as follows:

- Essex Region Conservation Authority - Chrysler Canada Greenway: The vision started in 1995 with a 50 km trail (developed in partnership with Chrysler Canada, senior levels of government, and support from individuals, corporations and others in the community).
- The Chrysler Canada Greenway opened in 2000 and has become one of the most important trails in the region for hiking, cycling, running, cross-country skiing and horseback riding.
- Essex Amherstburg Greenway - This vision was shared with CN who, based on the success of the Chrysler Canada Greenway, donated the 22 km abandoned rail line between Essex to Amherstburg to the Essex Region Conservation Foundation in 2003.
- With support of local communities, service clubs and senior levels of Government, ERCA has prepared the trail infrastructure and built 5.5 kilometres of the trail within the municipality of Essex which intersects with the Chrysler Canada Greenway.
- Plan underway to link the Windsor Essex Parkway to the Lasalle Trails.

- Doable for Windsor, Tecumseh and Lasalle to link into the Chrysler Canada Greenway
- Town of Leamington undertaking bike path trail to Pointe Pelee.
- Information relating to the Trail On Campaign to be placed on the WECEC website.

The salient points of discussion relating to the Detroit River International Wildlife Refuge are as follows:

- Detroit River International Wildlife Refuge is the only wildlife refuge in North America and was established in 2001. It is managed jointly by the United States Fish and Wildlife Service and the Canadian Wildlife Service.
- Located along the western coast of Lake Erie and much of the southern portion of the Detroit River.
- The Wildlife Refuge consists primarily of coastal wetlands, several islands in the Detroit River and waterfront parks. It also includes Humbug Marsh, which is classified as a wetland of international importance.
- Gaps identified are the declining Federal and Provincial support for environmental issues. This area is the most threatened part of the Great Lakes.
- Priority natural area on the Canadian side is focused on the Lake Erie watershed. The boundary is located where the watersheds drain into Lake Erie.
- Next step is to work with local municipalities in advancing initiatives on the Canadian side.

Moved by Councillor Halberstadt, seconded by P. Cheslock,
That the verbal report of Richard Wyma, Director, Essex Region Conservation Authority relating to the Trail On Campaign and the Detroit River International Wildlife Refuge **BE RECEIVED** and further, that information relating to the Trail On Campaign **BE PLACED** on the WECEC website.

Carried.

5. BUSINESS ARISING FROM THE MINUTES

5.1 Fluoride Campaign Update

Windsor City Council at its meeting held January 28, 2013 approved the following motion:

Moved by Councillor Dilkens, seconded by Councillor Jones,
CR18/2013 That **Report No. 45 of the Environment & Transportation Standing Committee**, of its meeting held January 25, 2012 regarding the fluoridation of the water system **BE RECEIVED**,

and further,

That City Council **PASS** a by-law **DIRECTING** the Windsor Utilities Commission to **CEASE** the fluoridation of the City of Windsor water supply while ensuring continued regulatory compliance, and that the savings from this action **BE DIRECTED** to oral and health nutrition education in Windsor and Essex County, for a period of 5 years, to be spent at the discretion of the Community Development and Health Commissioner.

Carried.

Councillors Valentinis, Gignac and Payne voting nay.

Councillor Halberstadt advises R. Dzugan presented on behalf of WECEC at the City Council meeting. He states D. Coronado provided a written submission extolling the toxicity of fluoride.

6. **COORDINATOR'S REPORT**

No report at this time.

7. **SUBCOMMITTEE REPORTS**

7.1 **Air**

D. Coronado indicates the proposed environmental impact statement for Fermi II has been published. He states his organization (Citizen's Environmental Alliance) will comment on the statement.

D. Coronado advises the Department of Energy will lift the moratorium on recycled radioactive metal.

7.2 **Transportation**

Councillor Halberstadt indicates WECEC met with representatives from the Windsor Bicycling Committee regarding the proposed bike lane across the new International Crossing. The subcommittee submitted comments to the Ontario Ministry of Transportation regarding their recently released *Cycling Strategy*.

7.3 **Provincially Significant Wetlands**

No report.

7.4 **Water Quality**

No report.

7.5 Surplus Parks Strategy

Councillor Halberstadt states a meeting was recently held regarding the closure of South Tilston Park.

R. Dzugan notes he attended the meeting and the residents are opposed to the closure of the park. He indicates information was provided relating to possible options to naturalize the park or to create a community garden. He advises the neighbours are willing to purchase playground equipment out of pocket.

Councillor Halberstadt indicates the next hearing to consider the closure of Titcombe Park will be held on March 5, 2013. He notes the Province owns Titcombe Park and wishes to naturalize the park.

Charlie Wright, Co-Chair advises St. Clair College is interested in having a board member sit on WECEC.

Moved by M. Bartlett, seconded by R. Dzugan,

That board member representation on the Windsor Essex County Environment Committee from St. Clair College **BE REFERRED** to the WECEC Membership Subcommittee to discuss the matter and to report back at the March 7, 2013 meeting.

Carried.

8. NEW BUSINESS

8.1 Generator Design of Canada Inc.

A more detailed breakdown of the invoice supplied by Generator Design of Canada Inc. is requested.

Moved by Councillor Halberstadt, seconded by Councillor Payne,

That approval for an expenditure in the upset amount of \$661.90 payable to Generator Design of Canada (as part of the Energy Conservation Campaign) **BE DEFERRED** to the March 7, 2013 meeting of the Windsor Essex County Environment Committee.

Carried.

8.2 Green Speaker Series – Proposal for Green Speaker Series

Councillor Halberstadt indicates the cost to retain Dan Burden, Executive Director and Cofounder of the Walkable & Livable Communities Institute for the Green Speaker Series is approximately \$10,000. He suggests each of the Business Improvement Areas (BIA's) contribute \$250-\$500, the St. Clair Architectural Society contribute \$1,000

and WECEC also contribute \$1,000. He states the BIA's will be contacted to determine their interest in this initiative.

9. **COMMUNICATIONS**

- 9.1 The article from Jamie Choi – Avaaz.org dated January 19, 2013 entitled “Attack of the Frankenfish” is received for information.

Councillor Halberstadt requests Communication #16 from the City Council meeting held January 21, 2013 be added as an Agenda item for the March 7, 2013 meeting of WECEC. The letter from the Chair of the Great Lakes and St. Lawrence Cities Initiative Mayor of Milwaukee regarding Asian Carp in the Great Lakes and St. Lawrence, is ***attached*** as Appendix “B”.

10. **DATE OF NEXT MEETING**

The next meeting will be held on March 7, 2013 at 5:30 p.m. at the Lou Romano Water Reclamation Plant.

11. **ADJOURNMENT**

There being no further business, the meeting is adjourned at 7:15 o'clock p.m.

Charlie Wright, Co-Chair

Committee Coordinator



AGENDA
WINDSOR-ESSEX COUNTY ENVIRONMENT COMMITTEE
held on Thursday, February 7, 2013
Meeting at 5:30p.m.
At LOU ROMANO WATER RECLAMATION PLANT

1. **CALL TO ORDER**

2. **DECLARATION OF CONFLICT**

3. **MINUTES**

Adoption of the minutes of the meeting held January 7, 2013 – to be e-mailed separately.

4. **PRESENTATION**

Director, Essex Region Conservation Authority, Richard Wyma: Introduction to the Trail On! Campaign and Canada's response to the International Wildlife Reserve

5. **BUSINESS ARISING FROM THE MINUTES**

5.1 Fluoride Campaign Update

6. **COORDINATORS REPORT**

No report.

7. **SUBCOMMITTEE REPORTS**

- 7.1 Air
- 7.2 Transportation
- 7.3 Provincially Significant Wetlands
- 7.4 Water Quality
- 7.5 Surplus Parks Strategy

8. **NEW BUSINESS**

8.1 Motion to approve an expenditure in the upset amount of \$661.90 payable to Generator Design of Canada Inc. (as part of the Energy Conservation Campaign) – invoice is attached.

8.2 **Green Speaker Series – Proposal for Green Speaker Series**

Proposal to invite Dan Burden, Executive Director and Cofounder of the Walkable & Livable Communities Institute for the next Green Speaker Series – Background information is attached.

9. **COMMUNICATIONS**

Article from Jamie Choi – Avaaz.org dated January 19, 2013 entitled "Attack of the Frankenfish" – attached.

Windsor Star Article entitled "Hazardous Goods Bound for Bridge?" – attached.

10. DATE OF NEXT MEETING

The next meeting will be held on March 7th, 2013 at the Lou Romano Water Reclamation Plant at 5:30 o'clock p.m.

11. ADJOURNMENT

Greenways & Trails

TRAIL ON CAMPAIGN



APPENDIX "A"



Essex to Amherstburg Greenway: An Invitation to Donors & Partners

We share a vision of a connected community. One where families can enjoy the sounds of nature while having an active lifestyle. Where residents cycle to and from destinations. And where hikers can explore and appreciate our region. Trails can do this for our community. They improve the overall character of a community and provide residents with the opportunity to enjoy the diverse environment around them. They provide a sense of place and belonging.

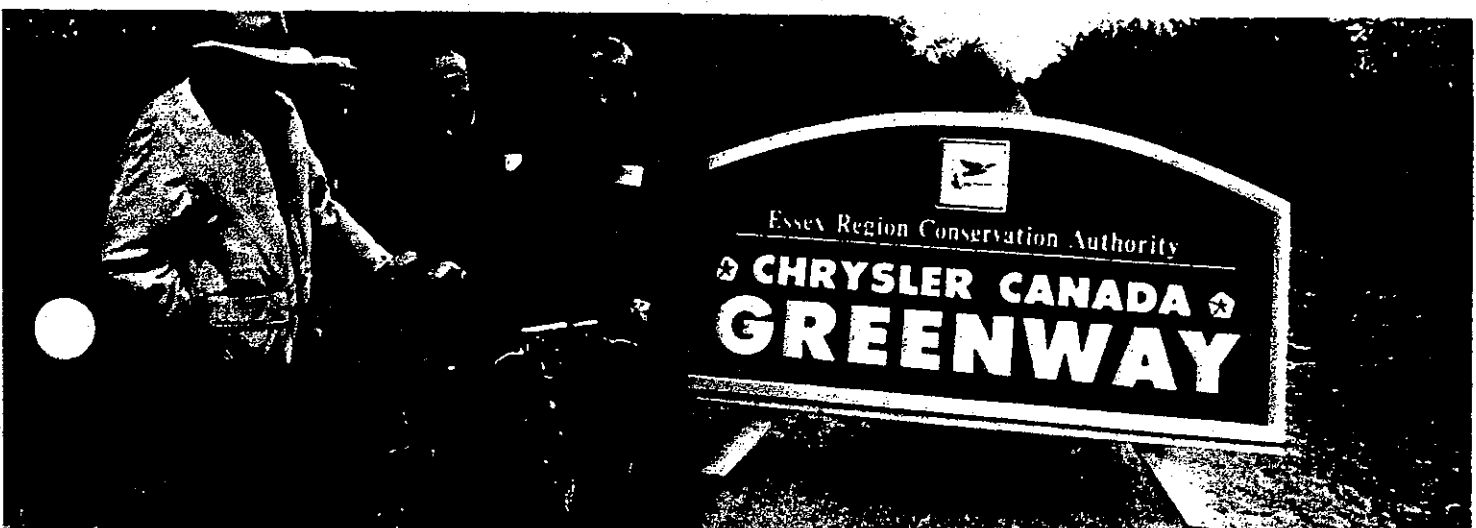
The Vision

Chrysler Canada Greenway: Our First Regional Trail
The vision started in 1995 with the Chrysler Canada Greenway, a 50 km trail acquired and developed in partnership with Chrysler Canada, senior levels of government, and support from individuals, corporations and others in the community. Since its opening in 2000, the Greenway has become one of the most important trails in the region for hiking, cycling, running, cross-country skiing, and horseback riding. It has become a destination for tourists, has inspired local businesses and industry along the route; and is used a destination by the VIA Bike Train and Windsor Eats tours.

Since 1973, the Essex Region Conservation Authority (ERCA) has been working to improve the environment of the Windsor-Essex region. ERCA began building trails in 1975 and with the Foundation, continued to expand the number of Conservation Areas and trails throughout the region. Today, Holiday Beach, Hillman Marsh, John R. Park Homestead and other Conservation Areas invite visitors to hike through wooded areas, wetlands, or even canoe along waterways such as Coder Creek, to experience the variety of what the Essex region has to offer.

Essex-Amherstburg Greenway: Continuing Connections

The vision was then shared with CN who, based on the success of the Chrysler Canada Greenway, donated the 22km abandoned rail line between Essex to Amherstburg to the Essex Region Conservation Foundation in 2003. Since then, again with the support of local communities, service clubs and senior levels of Government, ERCA has prepared the trail infrastructure and built 5.5 kilometres of the trail within the municipality of Essex which intersects with the Chrysler Canada Greenway, bringing our vision of a region connected by trails one step closer to reality.



Community Benefits

Trails support active lifestyles that improve health and help to prevent diseases such as heart disease, diabetes, and some cancers. Exercise in natural areas and trails reduce stress and improve mental health. Additionally, trails help to create jobs. The Ontario Trails Council estimates that trails contribute at least \$2 billion each year to the provincial economy. A multi-use recreational trail that connects municipalities can be used as an alternative transportation route, improving the bicycle-friendliness of our community. Linking municipalities by trails is expected to lead to a healthier and more active Windsor-Essex community.

Trails in our region improve the overall character of a community and provide residents with the opportunity to enjoy the diverse environments and natural beauty of a region. Trails help create a sense of place and a sense of belonging.

Our Support Will

CA's Greenways and Conservation Areas connect with families and individuals across the region. By supporting Greenway development you will

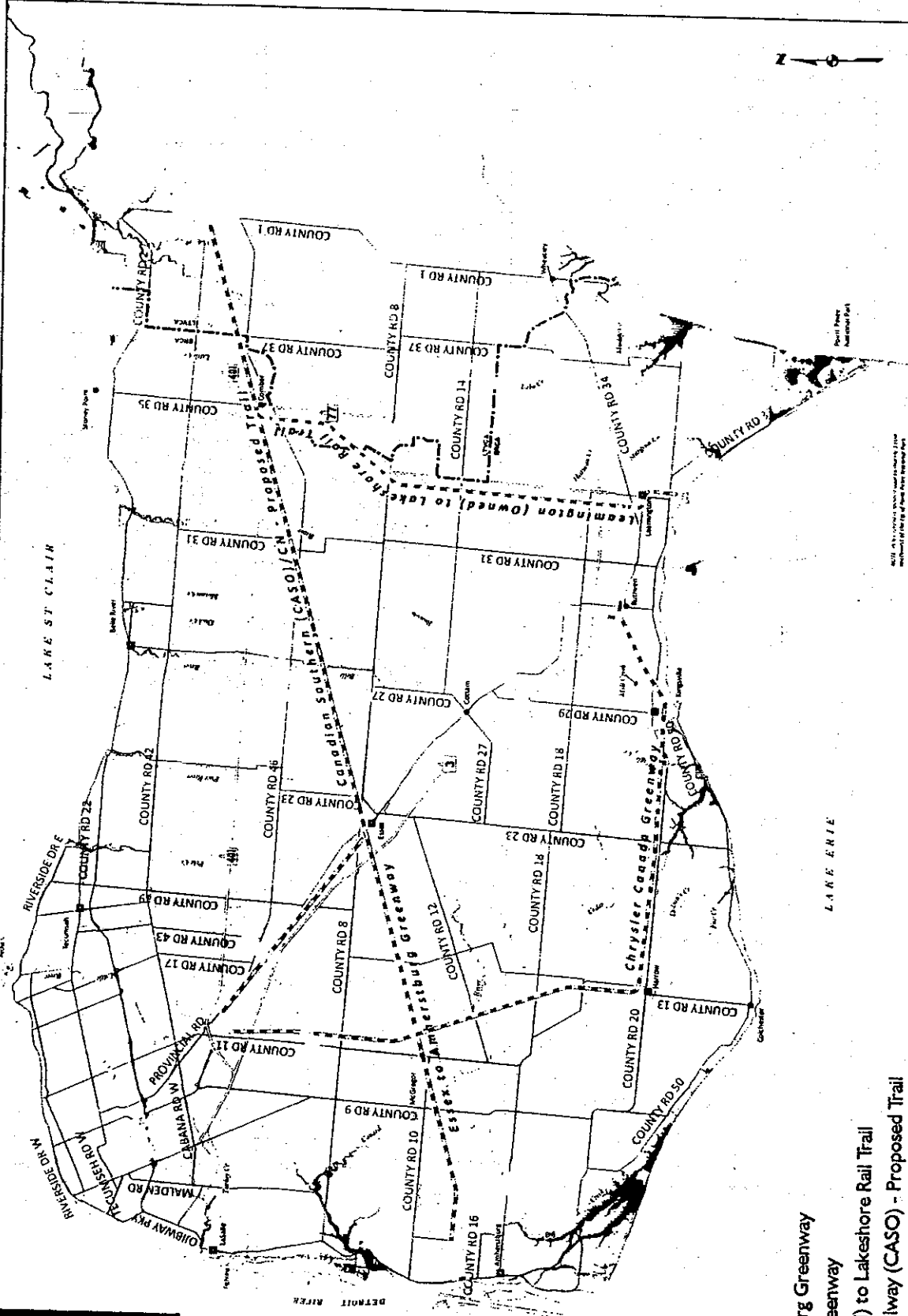
- Encourage the community to spend more time outdoors
- Protect and improve our local environment
- Promote healthy living
- Increase tourism and provide leads to economic development
- Create a sustainable community



	Available	Opportunity
100 + 1596 00)	3	<p>Community Entrances</p> <p>Community Entrances are individually named to provide profile for local industries, agencies, or individuals, and provide opportunities for names to appear on signage, maps and trail documents, and partner websites. Development at Community Entrances includes parking lots, picnic or sitting areas, trail extensions and other minor facilities to support trail access and use.</p> <p>Community entrance sponsors will receive exposure as a presenting sponsor for a specific entrance, designed to attract attention and new users to the Greenway. Recognition panels/kiosks at each entrance provide opportunities for recognition of partners at various levels to reduce signage on trails.</p>
00	10-15	<p>Build a Kilometre</p> <p>Through sponsoring a kilometre of new trail, donors can support greenway and trail development by contributing towards building 22 kilometres of the multi-use recreational trail. ERCA has already undertaken much of the infrastructure work – bridges and culverts have been installed and railroad ties have been removed. Presenting sponsors receive exposure through marketing and on-site recognition.</p> <p>Sponsor donations can be pledged over two or more years.</p>
00	15	<p>Trail Blazer</p> <p>Trail Blazer sponsors contribute to the overall building of the trail and receive recognition on signage and gates. Sponsor donations can be pledged over two or more years.</p>
0	20	<p>Trail Sponsors</p> <p>Trail Sponsors contribute to the overall building of the trail and receive recognition on donor recognition signage.</p>
0	10	<p>Picnic tables with recognition plate</p>
0	5	<p>Recycling Bins with recognition plate</p>
0	20	<p>Benches with 4" x 8" metal sign on bench</p>

Canada South Coast Trails

Greenways & Trails
Connecting
People and
Landscape



- Legend**
- ERCA Greenway
 - - - Essex to Amherstburg Greenway
 - - - Chrysler Canada Greenway
 - - - Learnington (Owned) to Lakeshore Rail Trail
 - - - Canada Southern Railway (CASO) - Proposed Trail



1:200,000



NOTE: All rights reserved. No part of this publication may be reproduced without the prior written permission of ERCA Geomatics.



Sustainability

Together, ERCA and ERCF provide leadership in creating a sustainable community that recognizes the links between environmental health, human health, and economic health. Open spaces, trails and a healthy environment directly contribute to our region being recognized as a place of choice for people to live, visit, and invest in Ontario and Canada.

Habitat

A vast majority of our publicly accessible Conservation Areas include a well developed trail system. Without these trails, the public would not have the ability to fully experience and appreciate our natural areas. Trails not only provide people with means of enjoying our Conservation Areas, but also have a number of benefits that extend well beyond the boundaries of our woodlots and wetlands. Our regional trails protect and improve our local environment by enhancing wildlife habitat by connecting separate woodlots to improve the ability of wildlife to move through this region.

If you wish to receive more information on how you can help the Foundation, or on how to donate, Please contact the Essex Region Conservation Foundation directly at 519-776-5209 or by email at foundation@erca.org or www.ourgreenlegacy.org

About the Essex Region Conservation Foundation

The Essex Region Conservation Foundation (ERCF) was established in 1977 to receive and maintain funds for charitable, educational, conservation and heritage purposes related directly or indirectly to the conservation, restoration, development and management of natural and heritage resources in the Essex Region.



The majority of our Greenway lands are regenerating naturally. The total corridor width required for the trail is only 10 meters wide, while the actual property width of the Greenways range from 20 - 30 metres, which provides more than 113 hectares or 278 acres of naturalized lands and habitats.

Funding The Greenway

The Foundation is currently fundraising for these trail projects. The community is anxious to have the trails complete, and partners such as the Towns of Essex and Amherstburg, trails committees, Active Living Committees, the County of Essex, local elementary and secondary schools, service clubs like Lions and Rotary, the Share the Road Committee of Essex, the Windsor-Essex Health Unit and many other public and private organizations have supported the completion of a regional trail network. The Foundation intends to raise the funds needed to link the region through development and acquisition as well as creating exciting natural areas and entrances. Enhancing these opportunities will help secure a healthier community and environment.

The Foundation's Mission is to create opportunities for every member of the community to invest in the environment of the Essex region, and create a natural legacy for future generations. The Foundation works to improve the human, economic and environmental health of the Essex Region by raising money for projects undertaken by The Essex Region Conservation Authority.

