

Adopted by Council at its meeting held May 22, 2012 [M259-2012]

/AA

Windsor, Ontario May 22, 2012

**REPORT NO. 64 of the
ENVIRONMENT & TRANSPORTATION STANDING COMMITTEE**
of its meeting held April 25, 2012

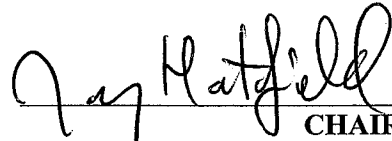
Present: Councillor Hatfield, Chair
Councillor Halberstadt
Councillor Sleiman
Councillor Valentinis

Regrets: Councillor Payne


That the following recommendations of the Environment and Transportation Standing Committee **BE APPROVED:**

Moved by Councillor Valentinis, seconded by Councillor Sleiman,
THAT the minutes of the Windsor-Essex County Environment Committee meeting held March 1, 2012 **BE RECEIVED** for information.
Carried.

Clerk's Note: The minutes of the Windsor-Essex County Environment Committee meeting held March 1, 2012 are attached as background information.

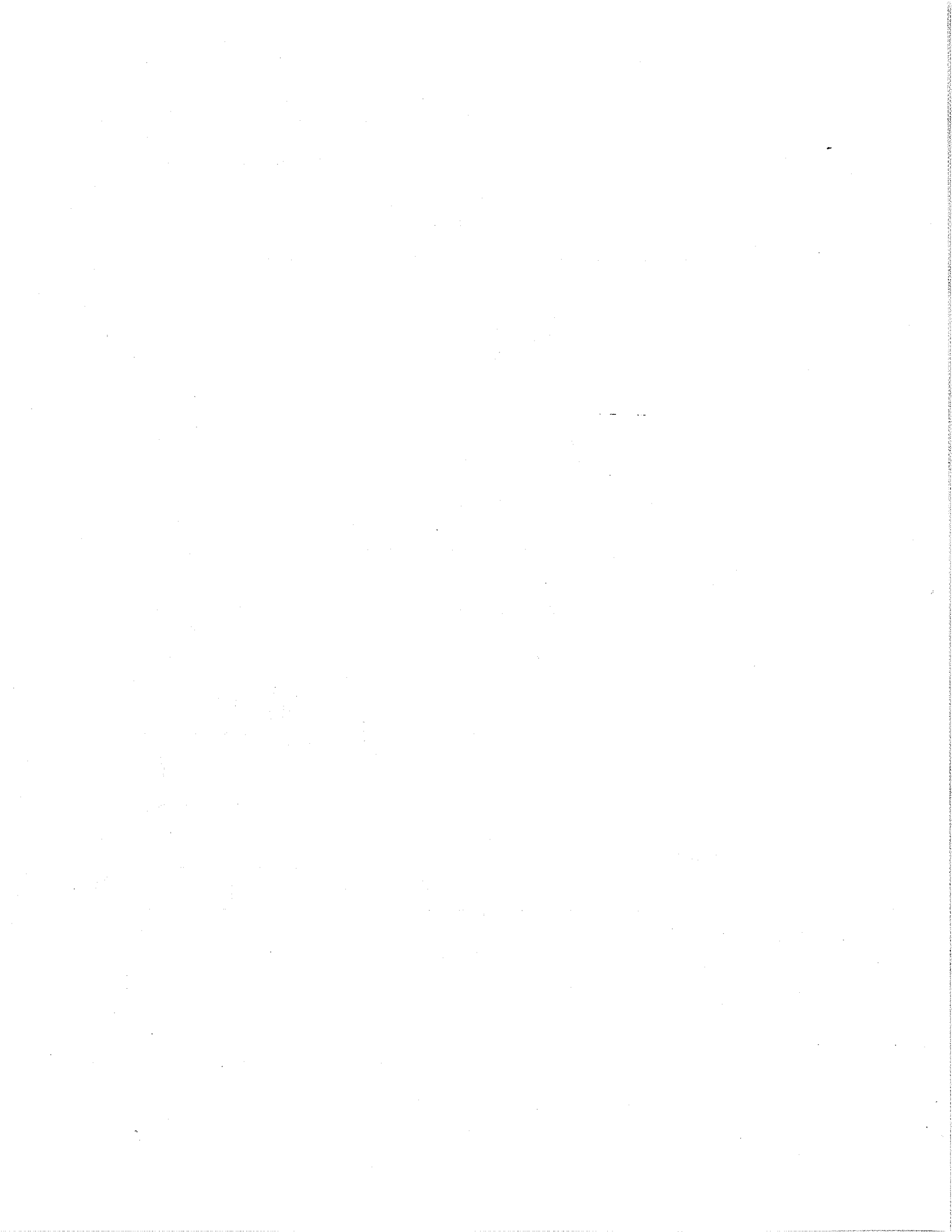


CHAIRPERSON



DEPUTY CLERK

| NOTIFICATION: | | | | |
|---------------|---------|---------------|-----------|-----|
| Name | Address | Email Address | Telephone | FAX |
| | | | | |
| | | | | |



KK/
Windsor, Ontario March 1, 2012

A meeting of the **Windsor-Essex County Environment Committee** is held this day commencing at 5:30 o'clock p.m. in the Board Room, Lou Romano Water Reclamation Plant, 4155 Ojibway Parkway, there being present the following members:

Charlie Wright, Co-Chair
Councillor Alan Halberstadt, Co-Chair
Councillor Hilary Payne
Pauline Cheslock
Matthew Child
Derek Coronado
Rick Coronado
Roger Dzugan (alternate for Mark Bartlett, arrives at 5:40 p.m.)
Karen Fallon
Paul Henshaw
Phil Roberts
Tamara Stomp (arrives at 5:40 p.m.)
Radwan Tamr

Regrets received from:

John Miller

Also present are the following resource personnel:

James Bryant, County Engineering Department
Averil Parent, Environment & Sustainability Coordinator
Beau Wansbrough, Planner II
Karen Kadour (A) Committee Coordinator

1. CALL TO ORDER

Charlie Wright, Co-Chair calls the meeting to order at 5:23 o'clock p.m. and the Committee considers the Agenda being Schedule "A" **attached** hereto, matters which are dealt with as follows:

2. ADDITIONS TO THE AGENDA

None.

3. DECLARATIONS OF CONFLICT

None.

4. MINUTES

Moved by K. Fallon, seconded by P. Roberts,
That the minutes of the Windsor-Essex County Environment Committee at its meeting held February 2, 2012 **BE ADOPTED** as presented.
Carried.

5. PRESENTATION

Dan Dufour, Carolinian Canada Coalition is present to provide information relating to the "Erie Coastal Stewardship Trail Concept". A document entitled "Erie Coastal Stewardship Trail Concept Summary – November 2011 – Exploring the Story of the Coast from Essex to Niagara" is attached as Appendix "A". The salient points of discussion relating to the Erie Coastal Stewardship Trail are as follows:

- Inspired by urgent threats to Lake Erie's coastal landscape, Carolinian Canada and partners are planning a 700 km trail network
- The vision of this endeavour promotes a series of interlocking driving, walking riding and paddling stewardship trails along the Lake Erie north coast and its major inland river valleys.
- Work began on the Erie Coastal Stewardship Trail in 2009, with initial support from Parks Canada and later the Ontario Trillium Foundation.
- To launch the trail quickly, a road cycling route will be established first. A combination of hiking, paddling, off-road cycling and wheelchair routes will be then connected by a Coastal Parkway or driving route.
- The trail is divided into 3 Coastal Regions – From the Detroit River to Wheatley to the Grand River to the Niagara River.
- Coastal Community Hubs are being identified where trail users can choose from a variety of experiences, route lengths and Stewardship Themes.
- Current funding from Parks Canada will cease in a few months.
- Municipalities to fund the development of the trails within their own regions.
- Final plan to be completed by summer 2012.

In response to a question asked by C. Wright, Co-Chair regarding the fact that the Detroit River is not located on Lake Erie, D. Dufour explains the Detroit River is a major tributary to Lake Erie.

P. Roberts suggests that recommendations and concepts relating to the Erie Coastal Stewardship Trail Concept be developed and provided to City/County Councils.

Moved by T. Stomp, seconded by R. Coronado,
That Administration from the City of Windsor and the County of Essex **BE ENCOURAGED** to liaise with the Carolinian Canada Coalition in an effort to further develop the concepts for the Erie Coastal Trail.

Carried.

6. BUSINESS ARISING FROM THE MINUTES

6.1 Renewable Energy Media Campaign

A. Parent indicates that letters requesting support for the Renewable Energy Campaign have been sent to various solar companies in Windsor as well as the Economic Development Corporation and the Regional Chamber of Commerce. She notes that meetings will be convened the week of March 5, 2012.

6.2 New WECEC Appointments

A. Parent states that the St. Clair College elected student government president will be put forth to sit on WECEC. She advises that a similar model has been suggested for the University of Windsor representative.

6.3 Updated WECEC Strategic Plan

Councillor Halberstadt, Co-Chair states there is a need to develop policy statements and resources to assist in the development of policy statements.

M. Child recommends that policies be developed for natural heritage districts.

P. Roberts indicates that the last WECEC Strategic Planning Session was held approximately two years ago.

ACTION REQUIRED: A. Parent to research if similar Municipal Environment Committees are successful in developing policy statements and how this process might work for our committee.

6.4 Green Speaker Series

A. Parent suggests David Ulrich, Great Lakes and St. Lawrence Cities Initiative as a future speaker for the "Green Speaker Series". She states Mr. Ulrich will be in Windsor from March 27-28, 2012 and he is requesting travel costs and hotel accommodations. As Mr. Ulrich will be in Windsor on March 27-28, 2012

(Tuesday/Wednesday) it is suggested he be contacted to determine his Saturday availability, perhaps in April 2012.

R. Tamr leaves the meeting at 6:35 o'clock p.m.

7. COORDINATOR'S REPORT

A. Halberstadt indicates that the Provincially Significant Wetlands Subcommittee requested a deferral of the Planning Department's report regarding the Ojibway Shores property.

The Environment & Transportation Standing Committee at its meeting held January 25, 2012 adopted the following motion:

Moved by Councillor Payne, seconded by Councillor Halberstadt,

THAT the City Planner **BE REQUESTED** to provide additional information to the Environment and Transportation Standing Committee regarding the environmental significance of Candidate Natural Heritage Site No. 37 as a linkage from the Detroit River to the adjacent City and Provincially owned natural heritage areas to the east (i.e. Black Oak Prairie Heritage Park, Ojibway Park/Tom Joy Woods, Ojibway Prairie Provincial Nature Reserve, and the Spring Garden ANSD); and

THAT the City Planner **BE REQUESTED** to provide a summary of the City's long-term employment land supply noting those properties with water access; and

THAT the City Solicitor **BE REQUESTED** to provide a legal opinion as to the validity of the June 1992 Agreement between the Windsor Harbour Commission and the Corporation of the City of Windsor; and further

THAT the City **PURSUE** further discussion with the Federal Government regarding the environmental benefits and cost savings associated with the preservation of the Ojibway Shores lands as natural heritage.

Carried.

Councillor Sleiman voting nay.

Councillor Valentinis was absent when the vote was taken on this matter.

Councillor Payne advises that a study to determine if there are endangered species in the Candidate Natural Heritage Site No. 37 has never been undertaken. He notes there is a need to determine what species are present on that site.

8. SUBCOMMITTEE REPORTS

8.1 Air

D. Coronado states that the Environmental Commissioner of Ontario is releasing a Special Report to review "*Climate Ready – Ontario's Adaptation Strategy and Action Plan 2011 – 2014*". *Climate Ready* is a plan released by the Ontario government which

outlines measures the government is taking to prepare the province for warmer temperatures, and more severe weather events, due to climate change. A Media Advisory entitled "Environmental Commissioner of Ontario to release Special Report on climate change adaptation" is attached as Appendix "B".

The document entitled "2010 Greenhouse Gas Emissions Data from Large Facilities Now Available – First release of data through the National Greenhouse Gas (GHG) reporting program is attached as Appendix "C".

8.2 Transportation

A letter from Dean Clevett, Chair Transportation Subcommittee dated March 1, 2012 subject matter "University of Windsor Student Bus Pass Proposal" is distributed and amendments are provided by the Committee.

Moved by R. Coronado, seconded by P. Henshaw,

That the letter as amended **BE SENT** from the Transportation Subcommittee to the University of Windsor regarding support of the U Bus Pass Program.

Carried.

Note: A copy of the amended letter from the Transportation Subcommittee to the University of Windsor regarding support of the U Bus Pass Program is attached as Appendix "D".

8.3 Provincially Significant Wetlands

P. Roberts provides an overview of the meeting held February 8, 2012 with the Windsor Essex Mobility Group (WEMG). The salient points of discussion relating to the February 8, 2012 meeting are as follows:

- WEMG highlighted their compensation strategy, designed to provide compensation where possible adjacent to existing PSW features as well as include additional land acquisition to support a 120 meter buffer around the 15 Ha of compensation wetland to be developed.
- Several positive elements were realized by this plan (recognition of the 3:1 ratio and the 120 meter buffering sets valuable precedence). All of the land acquisition is complete at this point.
- Discussion regarding additional opportunities including compensation value for linking the LaSalle Woodlots to Spring Garden ANSI through the Todd Lane/Lennon Drain corridor and similarly the Black Oak Heritage Park area to the Ojibway Complex through the Ojibway Parkway . At this point WEMG are not willing to discuss the Ojibway option.

In terms of wetland evaluations of publically owned properties, P. Roberts states that WECEC has had success in requesting evaluations for "suspect" PSW woodlots owned by the City of Windsor which has afforded those woodlots the highest degree of protection, a step which may have contributed to the St. Clair Woodlot debate.

C. Wright, Co-Chair leaves the meeting at 7:12 o'clock p.m. Councillor Halberstadt, Co-Chair assumes the Chair.

C. Wright, Co-Chair returns to the meeting at 7:15 o'clock p.m.

M. Child reports that ERCA owns 4,000 acres of land across the region including 19 conservations areas. He notes that several species are at risk. He provides the following comments relating to PSW evaluations:

- ERCA has applied for funding to do additional inventories on the properties that are less vulnerable
- Focus on all publicly owned properties
- Only the Ministry of Natural Resources (MNR) can identify the PSW's
- WECEC to develop a list of priority sites for wetland evaluations (possibly with the MNR).

8.4 Water Quality

M. Child advises that the outcomes of the March 20, 2012 Water Quality Subcommittee meeting will be provided for WECEC.

9. NEW BUSINESS

9.1 Clean Across Canada 2013

Councillor Halberstadt asks if WECEC is interested in participating in the Clean Across Canada 2013 initiative.

Moved by Councillor Halberstadt, seconded by P. Cheslock,

That WECEC participate in the Clean Across Canada Litter Campaign to be held in 2013, and further, that additional details **BE PROVIDED** once the parameters are identified.

Carried.

9.2 Website Additions: Pat on the Back and Green Speaker Series page additions

Moved by T. Stomp, seconded by P. Henshaw,

That **APPROVAL BE GIVEN** to an expenditure in the upset amount of \$650. to update the WECEC website to allow for information relating to the Green Speaker Series to be posted to the website.

Carried.

9.3 Waste to Energy FIT Program

D. Coronado to provide information relating to the Waste to Energy FIT Program.

10. COMMUNICATIONS

None.

11. DATE OF NEXT MEETING

The next meeting will be held on Thursday, March 29, 2012 at 5:30 o'clock p.m. in the Board Room, Lou Romano Water Reclamation Plant, 4155 Ojibway Parkway.

12. ADJOURNMENT

There being no further business, the meeting is adjourned at 7:35 o'clock p.m.

Charlie Wright, Co-Chair

(A) Committee Coordinator



AGENDA
and Schedule "A"
to the minutes of the meeting of the
WINDSOR-ESSEX COUNTY ENVIRONMENT COMMITTEE
Thursday, March 1st, 2012
Meeting at 5:30 p.m.
At the Lou Romano Water Reclamation Plant, 4155 Ojibway Parkway

1. **CALL TO ORDER**

2. **ADDITIONS TO THE AGENDA**

3. **DECLARATION OF CONFLICT**

4. **MINUTES**

Adoption of the minutes of the meeting held February 2nd, 2011 – *emailed separately.*

5. **PRESENTATION:**

Dan Dufour, Carolinian Canada – The Lake Erie Coastal Trail draft plan

6. **BUSINESS ARISING FROM THE MINUTES**

6.1 Renewable Energy Media Campaign

6.2 New WECEC Appointments

6.3 Updated WECEC Strategic Plan – *attached.*

6.4 Green Speaker Series – David Ullrich

7. **COORDINATORS REPORT**

WECEC Coordinator Monthly Report – *attached.*

8. **SUBCOMMITTEE REPORTS**

8.1 Air

8.2 Transportation

8.3 Provincially Significant Wetlands – *attached.*

8.4 Water Quality

9. NEW BUSINESS

9.1 Clean Across Canada 2013 – attached.

9.2 Website additions: Pat on the Back and Green Speaker Series page additions

9.3 Waste to Energy FIT program

10. COMMUNICATIONS

11. DATE OF NEXT MEETING

The next meeting will be held on Thursday, April 5th, 2011 at the Lou Romano Water Reclamation Plant at 5:30 o'clock p.m.

ADJOURNMENT



Erie Coastal Stewardship Trail Concept Summary

November 2011



Exploring the Story of the Coast from Essex to Niagara



www.carolinian.org

Coastal Coordinator coast@carolinian.org 519-433-7077
1017 Western Road, London ON N6G 1G5

DRAFT

Inspired by urgent threats to Lake Erie's coastal landscape, Carolinian Canada and partners are planning a 600 km trail network that will voluntarily bring together citizens, governments and industry, young and old, residents and tourists, rural and urban to connect with the nature and culture of the coast and become part of it.

located in the most densely populated region of Canada, Lake Erie's north shore is home to some of the rarest and most unique wildlife and habitats in the country. By cycling, hiking, driving or paddling, people will have access to learn about the heritage of the coast of Lake Erie and be inspired to participate in a future where the coastline thrives both naturally, culturally and economically - a source of pride for generations to come.

Motivation

Carolinian Canada is motivated by a strong concern about increasingly destructive impacts along the Lake Erie coast and its major tributaries. For decades, the coast and adjoining river valleys have been subjected to long and often damaging uses, such as mining, fishing, unsustainable farming, cottaging and other recreational activities, boating and transport, urban and harbour development, and waste disposal which today constitute a growing challenge to environmental health and the sustainability of a healthy Lake Erie coast.

Vision

The vision of this endeavour is of a series of interlocking driving, walking, riding and paddling stewardship trails along the Lake Erie north coast and its major inland river valleys. The trail's ultimate aim is to serve as a catalyst in promoting better overall understanding and care of coastal and associated river valley natural communities and the water quality and quantity, flood control, air quality, wildlife and other ecological services that they offer to environmental health and our economic and social well-being today and tomorrow.

A Stewardship Trail is a route that illustrates successful activities undertaken by people, organizations and businesses which have helped preserve or improve the plant and animal communities and geological health of the coast.

A Historical Approach with an Eye to the Future

On the highly settled landscapes of Carolinian Canada, natural vegetation, floodplains, river channels, water quality and other landscape characteristics owe much to several centuries of farming, drainage, river diversions, dredging, lumbering, fishing and other land use activities. Some areas reflect attempts to arrest erosion, forest, wetland, soil and other damage through conservation and restoration programs and projects. Success stories will be highlighted along the stewardship trail as examples for others. Carolinian Canada is especially interested in protecting species and habitats at risk. Areas where damaging land and water use practices continue will also be engaged with ideas for opportunities for stewardship activities.

Target Audiences

The Stewardship Trail aims to engage coastal communities in protecting and restoring the health of the coast. The trail is an effective tool since it has strong links to key community values such as health, economy, recreation, environment. The focus will be on recruiting new supporters for coastal stewardship such as coastal residents, decision-makers, businesses and visitors that are

Connecting Stewardship Partners, Stories & Actions

Long stretches of the coast have different geologic, ecological, land use and other characteristics. As such, there are advantages in dividing the trail into 3 **Coastal Regions**: from the Detroit River to Wheatley to the Grand River to the Niagara River. These regions will not only set the context for telling the story of different parts of the coast, but also simplify for the trail user. To assist visitors in using these trails, **Coastal Community Hubs** are being identified where trail users can choose from a variety of experiences, route lengths and Stewardship Themes, as well as, find accommodation, food and other amenities and attractions. Hubs will host users as they drive, cycle or hike in surrounding areas. Self-guided **Stewardship Tours** from each Hub will maximize coastal experience and access off-road trails. In this way the Erie Coastal Stewardship Trail can be linked to municipal or other trail opportunities and new trails. **Coastal Trail Information Centres** will be established by Trail Hosts in existing visitor facilities to provide trail information, host events and stewardship actions.

Delivering the Stewardship Message

The linkage to Carolinian Canada is a key element in the development and delivery of the stewardship message. Visits to the Stewardship Sites are a fundamental means of learning about and becoming involved in coastal stewardship. An interpretive strategy is being developed including a Stewardship Trail Guide, Website, signage and other social marketing products that will serve as a means of achieving this goal.

Carolinian Canada is primarily interested in this message: that is, in using the trail to promote better understanding and ultimately better conservation, restoration and more sustainable use of the coast.

Enhancing Ecosystem & Community Health

The trail can be used as a motivator to develop corridors of green and enhance habitat connections in Carolinian Canada's Big Picture Conservation Strategy. Stewardship actions along the trail can also help to implement multi-partner Biodiversity Hotspot Conservation Action Plans developed for Carolinian Canada's Ecosystem Recovery Program. Through these programs, the trail can have significant impact on ecosystem functions, water, air and soil quality, community health and climate change survival.

Greening the Future of Lake Erie's Carolinian Coast

Groups and individuals may wish to join in our network and become part of an expanded trail system and stewardship effort. A set of stewardship principles are being developed which can be adopted by partners. Since the 1980's, Carolinian Canada has had a strong record of collaboration with government and non-government groups in the Carolinian Canada region. We wish to bring this experience, and opportunity to potential partners on the Stewardship Trail. We are looking for collaborators who will support a vision for a healthy coastal vision and stewardship work, under principles such as these:

- Protect and restore native plant and animal communities, or ecosystems, and the geologic, hydrologic, climatic and other processes which support them.
- Promote understanding of the land use history accounting for much of the character and state of present vegetation and ecosystem patterns in the Carolinian Canada region.
- Support conservation and interpretation of built and human heritage.
- Protect and restore species at risk / Control invasive species.
- Support ecological and heritage based planning.
- Support land uses that are sustainable in economic, social and environmental terms.
- Promote collaboration in public and private stewardship.
- Accept responsibility for planning, establishing, managing, monitoring or interpreting sections of the trail.
- Others?

active outdoors, but may not currently understand how their actions affect the coast. The program will also aim to increase understanding and engagement among youth, especially those in urban and heavily settled rural areas who have less access to nature, with the view to educating our future leaders and land managers. The program will lay the groundwork for sustainable awareness that can then lead to an active and coordinated coastal stewardship support network.

Work in Progress

Work began on the Erie Coastal Stewardship Trail in 2009, with initial support from Parks Canada and later the Ontario Trillium Foundation and other sources. Numerous meetings, workshops, surveys and other outreach events along many parts of the Lake Erie coast have taken place and will continue in an attempt to build awareness and involvement in the project. Research, information gathering and mapping has also taken place in order to locate promising trail routes and stewardship sites near the coast.

Routes, stewardship sites and partners are being identified in a collaborative, interlocking Erie Coastal Stewardship Trail. The plan is for a system of trails operated by many partners using common guidelines for stewardship learning.

Interactive Stewardship Tours are being developed by local experts for our major themes: Exploring Coastal Processes; Birding Carolinian Hotspots; Reading Stories of People & the Land; Growing Wild Habitat; Saving Species & Unique Communities; Connecting in the Big Picture.

Stewardship Sites

The summer of 2011 focussed on efforts to identify especially instructive places for stewardship in the form of **Demonstration Sites** and **South Coast Heritage Sites**. Demonstration Sites offer specific examples of stewardship best practices, efforts or opportunities, such as a natural shore restoration project. Heritage Sites stand out as major focal points along the coast that address several stewardship themes, illustrate the evolution of the coastal landscape and highlight interactions between human and nature. Stewardship Demonstration Sites and South Coast Heritage Sites are the building blocks upon which a stewardship trail system will be built.

Coastal Leader Trail Hosts

Some partners may become **Coastal Leader Trail Hosts** and as such would plan, establish, manage and interpret sections of the Stewardship Trail. Carolinian Canada's role would be to coordinate activities amongst the trail hosts and partners along the coast, rather than own or manage any specific portion. Coastal Leader Workshops are establishing a founding network of Trail Hosts. A partnership with the Waterfront Regeneration Trust has engaged several Trail Hosts for the cycle route. Trail Hosts may include municipalities, First Nations, Conservation Authorities, Parks, stewardship trail or community groups, businesses, landowners and others.

Coast Keepers

A network of **Coast Keepers** are generally individual or groups of volunteers who aid in the planning, maintenance, monitoring and interpretation of the stewardship aspects of the trail. In some cases, Coast Keepers are helping to select preferred trail routes while others are involved in exotic species removal, habitat restoration and general trail maintenance and other stewardship related activities. A measure of the success of the trail in meeting its stewardship mandate will be in its ability to motivate and involve members of the public, youth especially, in the creation of the trail network and the protection of the coast.

Implementing a Multi-Modal Stewardship Trail

There is energy, urgent need and high expectations to implement the Stewardship Trail quickly. Experience during the last two years has shown that a multi-modal and road-linked network will engage the greatest number of people to participate over 600 km. A connected walking trail must be a long term goal on this private landscape. In mapping preliminary trail routes, Carolinian Canada has relied to a considerable extent on linking existing off-road trail loops with secondary roads, including some with long stretches of gravel through relatively remote countryside. A range of opportunities will be included for each mode of transportation from speed-cycling and mountain biking to lake paddling, and inland tributary navigation. The short to medium term (1 – 5 years) plan is to promote multi-modal trail experiences focussing on Stewardship Demonstration Sites and South Coast Heritage Sites along the coast and coastal watersheds.

To launch the trail quickly, a road cycling route will be established first. A combination of hiking, paddling, off-road cycling and wheelchair routes will be then be connected by a Coastal Parkway or driving route. This framework will allow the greatest flexibility to build on current momentum and develop enhanced off-road experiences, over time.

Media Advisory

**Environmental Commissioner of Ontario to release Special Report on
climate change adaptation**

The Environmental Commissioner of Ontario is releasing a Special Report to review *Climate Ready: Ontario's Adaptation Strategy and Action Plan, 2011 - 2014*. *Climate Ready* is a plan released by the Ontario government. It outlines measures that the government is taking to prepare the province for warmer temperatures, and more severe weather events, due to climate change. The Commissioner will be commenting on the adequacy of the government's plan.

The report will be released at a media conference, and will also be available via webcast. To watch a live webcast of the media conference, please visit <http://www.eco.on.ca/>. Please note the Commissioner will not be taking questions via webcast, but will be available for individual interviews after the news conference.

Visit http://www.ene.gov.on.ca/environment/en/resources/STDPROD_081665.html to download the government's report: *Climate Ready: Ontario's Adaptation Strategy and Action Plan, 2011 - 2014*.

WHEN: Wednesday, March 7, 2012 at 10:00 a.m.

WHERE: Room 149, Queen's Park Media Studio, Legislative Assembly of Ontario
Legislative Building, Queen's Park, Toronto, Ontario

- Media not currently accredited by the Legislative Assembly (Queen's Park) Media Gallery must register with the Press Gallery if they wish to participate in the conference. To register, contact Gerald Christopher, Press Gallery Coordinator - Room 387A or 416-325-7922 or gerald_christopher@ontla.ola.org.
- The full report will be available in print and PDF formats at 10:00 a.m. on March 7, 2012. To download the report, visit <http://www.eco.on.ca>.

For more information or to schedule interviews, contact:
Maria Leung, Communications & Outreach Coordinator, 416-325-3371 or
maria.leung@eco.on.ca.

For French language release and bilingual support, contact:
Jean-Marc Fillion, 705-476-9665.

Aussi disponible en français.

CONTACT:

Cathy Milbourn (News Media Only)
Milbourn.cathy@epa.gov
202-564-7849
202-564-4355

FOR IMMEDIATE RELEASE
January 11, 2012

2010 Greenhouse Gas Emissions Data from Large Facilities Now Available

First release of data through the national GHG reporting program

WASHINGTON – For the first time, comprehensive greenhouse gas (GHG) data reported directly from large facilities and suppliers across the country are now easily accessible to the public through EPA's GHG Reporting Program. The 2010 GHG data released today includes public information from facilities in nine industry groups that directly emit large quantities of GHGs, as well as suppliers of certain fossil fuels.

"Thanks to strong collaboration and feedback from industry, states and other organizations, today we have a transparent, powerful data resource available to the public," said Gina McCarthy, assistant administrator for EPA's Office of Air and Radiation. "The GHG Reporting Program data provides a critical tool for businesses and other innovators to find cost- and fuel-saving efficiencies that reduce greenhouse gas emissions, and foster technologies to protect public health and the environment."

EPA's online data publication tool allows users to view and sort GHG data for calendar year 2010 from over 6,700 facilities in a variety of ways—including by facility, location, industrial sector, and the type of GHG emitted. This information can be used by communities to identify nearby sources of GHGs, help businesses compare and track emissions, and provide information to state and local governments.

GHG data for direct emitters show that in 2010:

- Power plants were the largest stationary sources of direct emissions with 2,324 million metric tons of carbon dioxide equivalent (mmtCO₂e), followed by petroleum refineries with emissions of 183 mmtCO₂e.
- CO₂ accounted for the largest share of direct GHG emissions with 95 percent, followed by methane with 4 percent, and nitrous oxide and fluorinated gases accounting for the remaining 1 percent.
- 100 facilities each reported emissions over 7 mmtCO₂e, including 96 power plants, two iron and steel mills and two refineries.

Mandated by the FY2008 Consolidated Appropriations Act, EPA launched the GHG Reporting Program in October 2009, requiring the reporting of GHG data from large emission sources across a range of industry sectors, as well as suppliers of products that would emit GHGs if released or combusted. Most reporting entities submitted data for calendar year 2010. However,

an additional 12 source categories will begin reporting their 2011 GHG data this year.

Access EPA's GHG Reporting Program Data and Data Publication Tool:
<http://epa.gov/climatechange/emissions/ghgdata/>

Information on the GHG Reporting Program:
<http://epa.gov/climatechange/emissions/ghgrulemaking.html>

Information on the U.S. Inventory of Greenhouse Gas Emissions Sources and Sinks:
<http://epa.gov/climatechange/emissions/usinventoryreport.html>

R008



Windsor Essex County

ENVIRONMENT COMMITTEE

• 4155 Ojibway Parkway • Windsor, Ontario N9A 6S1 •
Tel: 519-253-7111 ext. 290 • Email: aparent@city.windsor.on.ca

University of Windsor Students' Alliance
Room 209, 2nd Floor CAW Student Centre
University of Windsor
401 Sunset Ave
Windsor ON, N9B 3P4

March 1st 2012

Re: University of Windsor Student Bus Pass Proposal

Dear University of Windsor Students,

The Windsor Essex County Environment Committee (WECEC) encourages you to vote in favour of the bus pass proposal that has been negotiated between Transit Windsor and the Students Alliance. WECEC is a committee with representation from City and County Council, as well as various environmental, educational, health, labour and business organizations dedicated to supporting and advocating for environmental issues in Windsor-Essex County. Please visit our website for more information: www.wecec.org.

Public transit is a strategic element of Windsor's transportation system and provides transportation options to not only those without vehicles, but those with vehicles who choose to use public transit for certain trips. As such, it contributes to the ability to work, attend cultural events or visit downtown or the mall in the evening or on weekends, in addition to transportation to the University. One key factor in driving improved bus routes and timing is utilization of the transit system. As use of public transit increases, transit companies can adjust routes to serve common needs better. County and Windsor non-urban residents can benefit by parking off campus and bussing in to the University. The University of Windsor is one of only a few universities not taking advantage of such an arrangement. For the cost of one or two taxi rides to downtown, you can have transportation available to you for an entire semester.

With the addition of downtown campuses, the expectation of reduced parking availability in the future, and the positive environmental benefits of public transit; you will not only be voting to support your transportation options but also supporting the environment.

Environmentally yours,

Dean Cleve
Transportation Sub-committee Chair
Windsor Essex County Environment Committee

APPENDIX "D"