



Banwell Road Phase 2 and Roundabout Construction

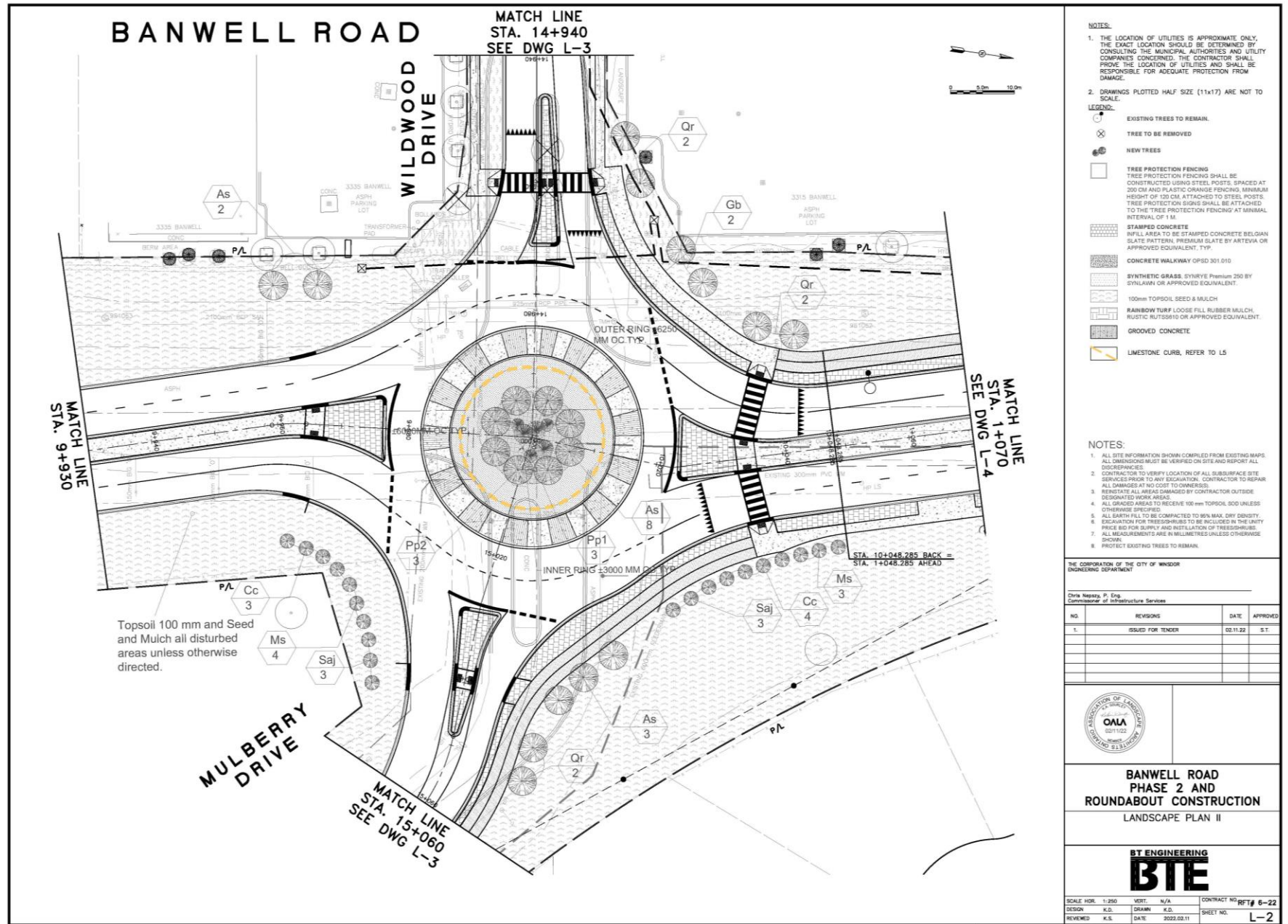
ACCESSIBILITY COMMITTEE MEETING

FEBRUARY 2022

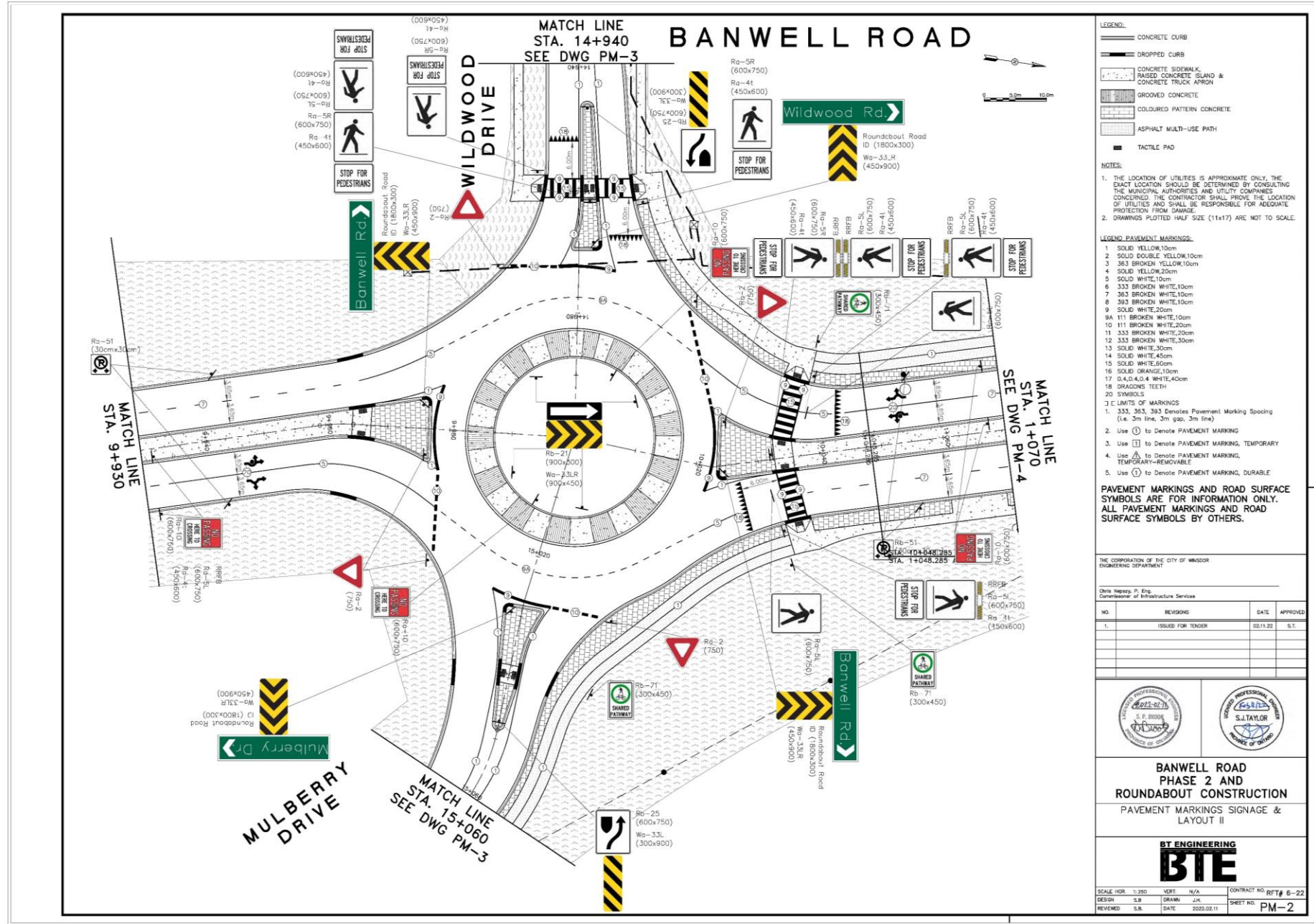
Project Introduction



Plan View



Traffic Signage

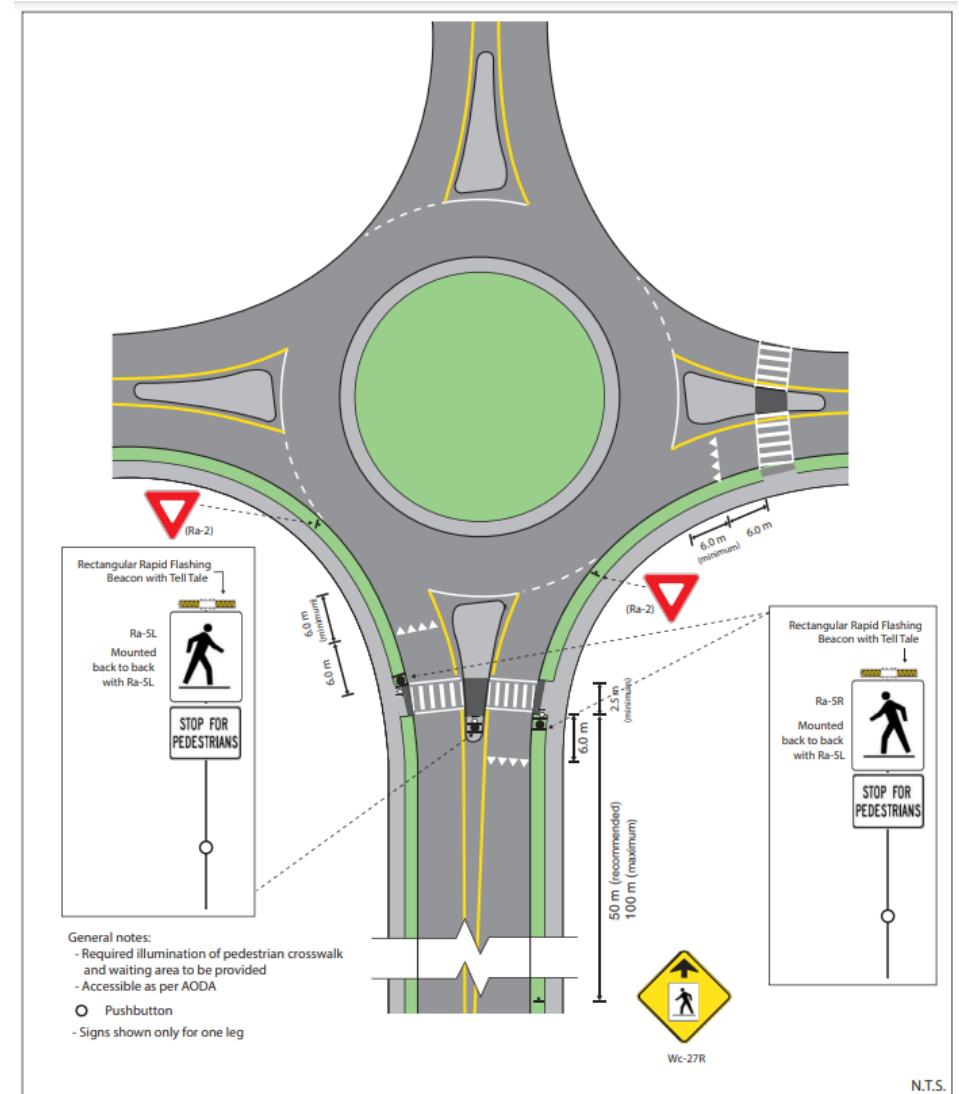
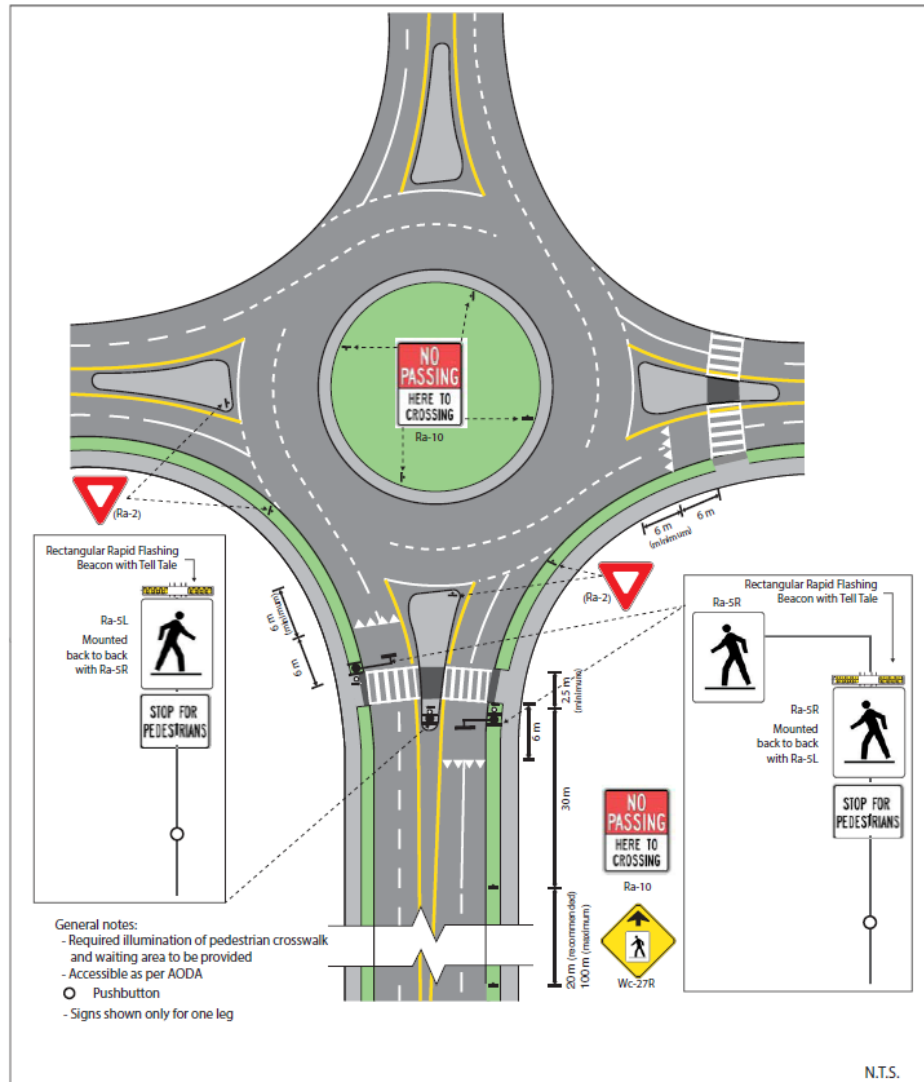


Pedestrian Crossings

- Pedestrian crossovers will be provided on the north and west legs of the roundabout
- The crossovers will include tactile button faces with an audible tone and flashing lights (rectangular rapid flashing beacons) when pushed



Pedestrian Crossings



Pedestrian Crossings

Pedestrian Crossover Level
2 Type C – Single-Lane
Roundabout

Questions?
