

International Relations Committee

Meeting held March 8, 2023

A meeting of the International Relations Committee is held this day commencing at 3:30 o'clock p.m. via Zoom video conference, there being present the following members:

Councillor Angelo Marignani, Chair
Councillor Renaldo Agostino (arrives at 3:58 p.m.)
Councillor Fred Francis
Councillor Ed Sleiman
Saiful Bhuiyan
Lubna Barakat
Ronnie Haidar
William Ma
L. T. Zhao

Regrets received from:

Jerry Barycki

Also present are the following resource personnel:

Sandra Gebauer, Council Assistant
Karen Kadour, Committee Coordinator

1. Call to Order

The Committee Coordinator calls the meeting to order at 3:30 o'clock p.m. and the Committee considers the Agenda being Schedule A attached hereto, matters which are dealt with as follows:

2. Election of Chair

The Committee Coordinator calls for nominations from the floor for the position of Chair. Councillor Fred Francis nominates Councillor Angelo Marignani seconded by Councillor Ed Sleiman for the position of Chair. The Committee Coordinator asks if there are further nominations from the floor for the position of Chair. Seeing none, the Committee Coordinator asks Councillor Angelo Marignani if he accepts. Councillor Angelo Marignani accepts and assumes the Chair.

3. Declaration of Conflict

None disclosed.

4. Adoption of the Minutes

Moved by Councillor Fred Francis, seconded by Councillor Ed Sleiman,
That the minutes of the International Relations Committee of its meeting held
November 23, 2022 **BE ADOPTED** as presented.

Carried.

**5. Presentation – City of Windsor’s Participation in the Garden of Twin Cities,
Mannheim, Germany**

Wanda Letourneau, Manager Horticulture provides a Presentation entitled
“Garden of Twin Cities Mannheim – open Access”, **attached** as Appendix “A”. The
highlights of the presentation are as follows:

- In October 2021, she represented the City of Windsor and participated in a virtual Garden of the Twin Cities program organized by the City of Mannheim.
- Each of Mannheim’s twin cities was asked to provide a representation of their respective city to be included in the Garden.
- Coventry Gardens was chosen as the best representation of the City of Windsor.
- Communication by the twin cities to Mannheim was done through a virtual “palette”.
- A rock garden design reminiscent of Coventry Gardens that includes some shrubs along with perennials and grasses was presented.
- The design was accepted and two horticulture students from St. Clair College travelled to Mannheim and had an opportunity to work on the gardens.
- She asks the IRC to select the sign that will be displayed in the Garden of Twin Cities.

Moved by Councillor Ed Sleiman, seconded by L.T. Zhao,
That the Presentation entitled “City of Windsor’s Participation in the Garden of Twin
Cities, Mannheim, Germany” provided by the Manager Horticulture **BE RECEIVED**.

Carried.

Moved by Councillor Fred Francis, seconded by L.T. Zhao,
That the signage that displays the City of Windsor W Logo along with a rose that
identifies Windsor as the Rose City **BE APPROVED** and further, that the Canadian flag
BE ADDED to the signage.

Carried.

6. Business Items

6.1 Invitation to Mayor Drew Dilkens regarding the Ceremonial Opening of the Garden of Twin Cities and the International Conference of Twin Cities in Mannheim on May 5-6, 2023

S. Gebauer provides an update noting that the City of Mannheim has been working on this project for the past two years and developed the Garden of Twin Cities with contributions from all twelve of their twin cities. In May 2023, Mannheim will be unveiling their garden and invited members from all of the twin cities to attend. The City of Mannheim has invited a maximum of three (3) delegates to attend, including Wanda Letourneau as the person responsible for the design of the City of Windsor's contribution to the garden. The City of Mannheim will be providing all local transportation along with meals and accommodations, while the IRC is responsible for the flights. She adds it is the decision of the Committee to approve the participation of Wanda Letourneau; a political representative and a member of the IRC.

Councillor Fred Francis remarks that typically the Chair of the IRC attends the twin city events.

In response to a question asked by Councillor Fred Francis regarding if there is interest from Committee members to go to Mannheim, Councillor Renaldo Agostino, S. Bhuiyan and R. Haidar express an interest. S. Gebauer asks that interested members send an e-mail to her.

Moved by Councillor Fred Francis, seconded by L.T. Zhao,

That the invitation extended by Mannheim, Germany for the Chair, the Manager of Horticulture and one representative from the International Relations Committee to attend the Ceremonial Opening of the Garden of Twin Cities and the International Conference of Twin Cities in Mannheim from May 4-7, 2023 at a upset limit of \$10,000 **BE APPROVED**, and further, that interested members of the IRC enter their names into a draw which will be held virtually.

Carried.

6.2 International Mother Language Plaza (Martyr's Monument)

Clerk's Note: The IRC Committee of its meeting held November 23, 2022 approved the following motion:

Moved by Councillor Kaschak, seconded by Councillor Sleiman,

“That the International Mother Language Plaza (Martyr’s Monument) request for funding **BE DEFERRED** to the next meeting of the newly appointed International Relations Committee.”

Carried.

S. Bhuiyan states that he is the Ex-President of the Bangladesh-Canada Association and is aware of the International Mother Language Plaza initiative. He indicates that in 1999 UNESCO declared International Mother Language Day and cities and all over the world have erected monuments. He asks that the IRC provide funding towards this initiative.

S. Gebauer reports that prior to the November 23, 2022 IRC meeting, she was asked to provide information relating to this matter. She adds that benchmarking was conducted with other municipalities that have similar international committees and questioned the parameters around their budgets. The City of Windsor’s IRC Committee Mandate does not prohibit providing funding to non-twin cities, however, this would set a precedent. The only time where funding was provided to an organization not associated with a twin city, was for the purchase of tickets for a South-Asian dinner event.

Councillor Fred Francis advises that as the IRC does not have a twin city relationship with Bangladesh, he suggests that City Council decide if they wish to provide funding. He adds that this matter should be not on the IRC Agenda.

Moved by Councillor Fred Francis, seconded by W. Ma,

That the request for funding for the International Mother Language Plaza (Martyr’s Monument) **BE REFERRED** to City Council for their review and consideration for funding as this matter is not germane to the International Relations Committee.

Carried.

6.3 International Relations Committee – 2022 Annual Report

Moved by Councillor Fred Francis, seconded by R. Haidar,

That the International Relations Committee 2022 Annual Report **BE APPROVED**.
Carried.

7. Communications

Moved by Councillor Ed Sleiman, seconded by Councillor Renaldo Agostino,
That the following Communications **BE RECEIVED**:

7.1 Twin Cities and Date of Twinning

7.4 Nicolaus Copernicus Jubilee

7.5 Happy 550th Birthday, Mr. Copernicus

Carried.

7.2 Request from Arlington, Texas for a Sister City Agreement

Councillor Fred Francis advises that the City of Windsor does not currently have a Twin City in the United States.

Moved by Councillor Francis, seconded by L.T. Zhao,
That Administration **BE REQUESTED** to explore and report back on the feasibility of potentially twinning with Arlington, Texas.

Carried.

7.3 Request for Sister City Agreement with Turkey

Councillor Fred Francis remarks that the request for a Sister City agreement with Turkey makes no reference to a specific city.

Moved by Councillor Fred Francis, seconded by Councillor Ed Sleiman,
That the request for a Sister City agreement with Turkey **BE RECEIVED**.
Carried.

8. Confirm & Ratify E-mail Polls

That the following motion sent via E-mail Poll on October 18, 2022 **BE CONFIRMED AND RATIFIED**:

Moved by W. Ma, seconded by R. Haidar,

That the following motions sent via E-mail Poll on October 18, 2022 regarding that approval be given to an expenditure in the upset amount of \$4,000 for costs associated with the delegation from Lublin, Poland to visit the City of Windsor from November 17, 2022 to November 20, 2022” and that approval be given to an expenditure in the upset amount of \$400 for the purchase of four (4) tickets (1 ticket for Mayor Dilkens) for the 25th Annual Polish-Canadian Business Society Dinner to be held on November 18, 2022 at the Caboto Hall, 2175 Parent Avenue.

Carried.

S. Bhuiyan asks what is the process for twinning with Dhaka, Bangladesh.

Councillor Francis responds that Administration will provide the Twinning Policy to S. Bhuiyan and adds that twinning with a city is community driven and formal letters are sent from the respective mayor for that city. Generally, there are similarities with the potential twinning with the City of Windsor.

9. Date of Next Meeting

The next meeting will be at the call of the Chair.

10. Adjournment

There being no further business, the meeting is adjourned at 4:25 o'clock p.m.

CHAIR

COMMITTEE COORDINATOR

Garden of Twin Cities Mannheim - open access

planning workshop

PIA SCHANNE OCT 12, 2021 09:34AM UTC

News and insights into the gardening process 2022

Summertime video

Mediathek

Internationales Sommercamp in Mannheim vom 10.-17. Juli 2022. Bau des Gartens der Partnerstädte im Luisenpark Mannheim mit jungen Gärtner*innen, Auszubildenden und Freiwilligen aus Mannheim und seinen Partnerstädten Berlin Charlottenburg-Wilmersdorf, Bydgoszcz - Polen, Chişinău - Republik Moldau, H...

MANNHEIM.DE



Zhenjiang

This bridge is to be redesigned.

Zhenjiang

A stream will lead to the lake coming from the giant bonsai.



Windsor

Here will also be a bear made of plants. The fountain needs some kind of friendly fence so that no children go to climb there.



Klaipeda

We would like to put typical signs for fishing boats on flagpoles.

Toulon

Mediterranean vegetation will be exhibited here. Perhaps we can integrate a photo of the cable car to Mont Faron.



Riesa

The theme is monastery and herb garden. A small work of art made of metal could complete the garden.



Czernowitz / Chernivtsi

The willow will be decorated as a symbol of peace.



Haifa

The sukkah will be equipped with seating.

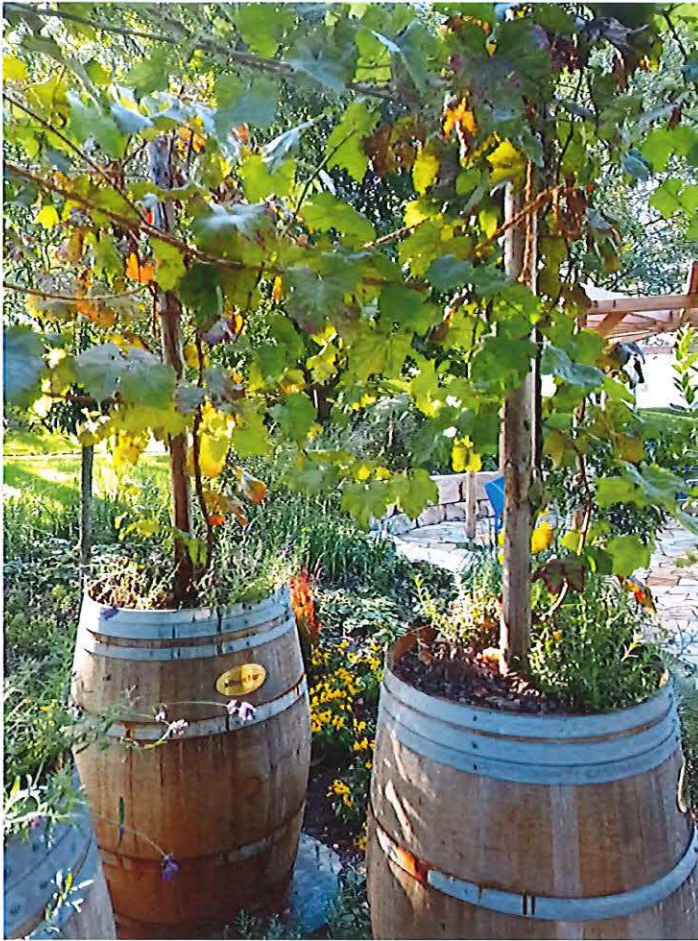


Chisinau

An exhibition theme will be viticulture and wickerwork.

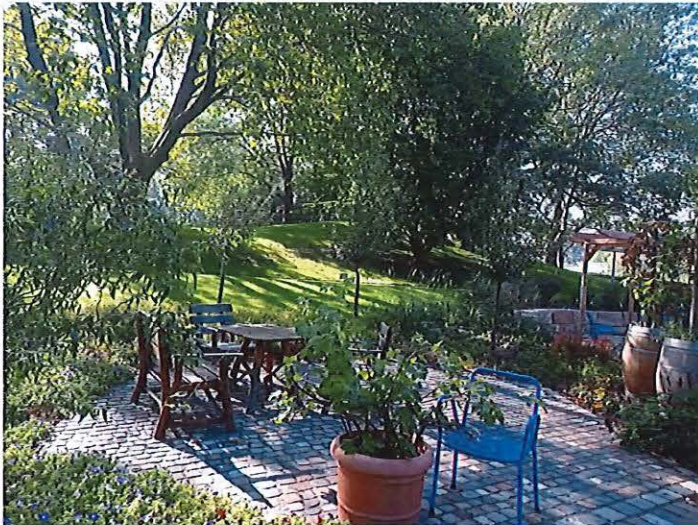
Qingdao

The colors of the painting are to be continued in the planting.



Berlin

Chisinau



General information

German National Garden Show (BUGA)

Bydgoszcz



Pr_sentation_Ausstellungsplanung.pdf
 PDF document
 PADLET DRIVE



plan_of_BUGA_english.pdf
 PDF document
 PADLET DRIVE

Welcome to Mannheim

Here you see some impressions of the city.



Mannheim - Grüne Stadt am Fluss
 by Visit Mannheim
 YOUTUBE

What we want to do (Garden Concept in english)

In addition please find the garden concept in your language at the column of your city!

[Project outline for the Garden of Twin Cities](#)

[A contribution to the BUGA exhibition](#)

The city of Mannheim is twinned with a number of cities worldwide: Bydgoszcz (Poland), Berlin Charlottenburg-Wilmersdorf and Riesa (Germany), Chisinau (Republic of Moldova), Klaipėda (Lithuania), Toulon (France), Windsor (Canada), Zhenjiang and Qingdao (China), Haifa (Israel) and Swansea (Wales, UK).

Together with colleagues from Mannheim, representatives from these twin cities are planning a garden for the Federal Garden Show in Mannheim (BUGA 23). The "Garden of Twin Cities" is a long-term project and will live beyond BUGA 23. It will be maintained as part of "Luisenpark" and can be used as a focal point for international activities in Mannheim.

The planning workshop will take place online in October 2021 due to pandemic-related travel obstacles.

Task:

The "Garden of Twin Cities" is intended to mirror the diversity of Mannheim's twin cities, at the same time focusing on what these cities have in common and what unites them. Rather than

Garden_Concept_english.pdf
 PDF document
 PADLET DRIVE

German National Garden Show - information sheet

Bundesgartenschau - Infolyer



RAUM FÜR EXPERIMENTE
Die BUGA 23 bietet ein innovatives Experimentierfeld für ein nachhaltiges Zusammenleben in der Stadt.

Umwelt - VERNETZTE VERFAHRE
Das Ausharfen beider Territorien ist prägnant durch die auf dem 80 Hektar großen Sonder-Gelände und die angrenzenden Federhöfen. An der Stelle der größten Anbauschutzgebiete der Region, vererbte Biotope bieten Flor- und Fauna vielfältige Lebensräume.

Klima - KREATIV DEN WENDEL TROTZEN
Auf der BUGA 23 haben die BesucherInnen die bewährte, existierende Forschungspraxis und die Erprobung nachhaltiger Klimawandelungsstrategien zu entdecken. Von klimasensibler Regenplanung bis hin zu vertikaler Fassadenbegrünung.

ENERGIE - CLEVERE KRAFTWERKE
Die Nachfrage nach Energie ist enorm - besonders steigend. Aus diesem Grund widmet sich die BUGA 23 neuen Energieformen. Wind- und Solaranlage haben zwar die Umwelt zu schonen, doch dem Landschaftsbild und der Vielfalt an Profanität. Feder- und Pfahlbauten nicht mehr als. Dafür das nicht auch anders im Gespräch mit der BUGA 23 werden können Ideen für Menschen entstehen.

NÄHRUNGSSICHERUNG - BEISSEN FÜR ALLE
Bis 2050 fehlt ein Drittel der Arbeitskräfte für die Nahrungserzeugung. Die wachsende Bevölkerung, wie auf der regionalen Fläche mehr Nahrungsmittel heranzubringen produziert zu können. Konkrete die neue Konzepte. Die BUGA 23 präsentiert sich unter anderem ein „Plant-to-Food“ Urban Gardening und Vertical Farming. Dabei wird Regionalität groß geschrieben.

Klicken Sie auf dem Laufband mit unserem Newsletter www.buga23.de/newsletter

BUGA 23 - BESTE AUSSICHTEN
Kommendes Sommerfest und Festival der Bundesgartenschau 2023 in Mannheim wird eine Meilenstein. Mit über 100 Hektar Fläche wird die BUGA 23 nicht nur eine der größten Bundesgartenschauen. Sie wird - und das ist neu in der Geschichte - ein Experimentierfeld für innovative Ideen und Forschungsansätze zu den vier Leitthemen Klima Umwelt, Energie und Nahrungserzeugung anfrähen.

Die BUGA 23 wird sich über das Mittelgürtel-Straßenraum den Ludwigsplatz entwickeln, einem Veranstaltungsort der BUGA 1973. Ein Highlight wird die Seilbahn sein, die beide BUGA-Gelände miteinander verbindet.

Mehr Infos finden Sie unter BUGA23.DE

Plan_der_BUGA_dt.pdf
PDF document
PADLET DRIVE

Pia Schanne, International Office, Mannheim:

+49 621 293 9547

pia.schanne@mannheim.de

Stefanie Miller, International Office, Mannheim:

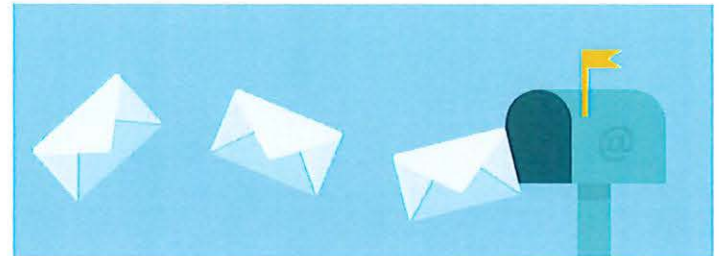
+49 621 293 9506

stefanie.miller@mannheim.de

Jana Garbrecht, International Office, Mannheim:

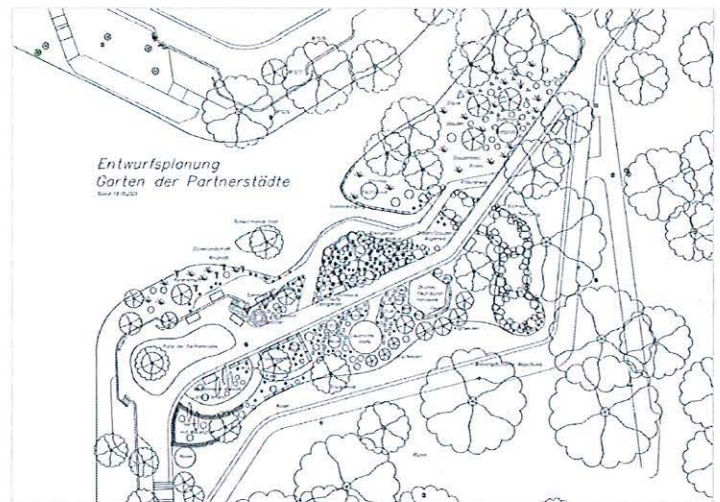
+49 621 293 9467

jana.garbrecht@mannheim.de



Workshop notes

Garden of Twin Cities - design



GartenderPartnerst_dte29_1.pdf

PDF document

PADLET DRIVE

German National Garden Show (Bundesgartenschau - BUGA 2023)

This film gives an impression of the planning for the German National Garden Show in Mannheim and the idea of a green corridor to improve the climate of the city.

Please click the small "rectangle button" at the bottom right of the film to activate the subtitles. The next button ("wheel-button") will let you select an automatic translation into your language.



Grünzug Nordost und Bundesgartenschau Mannheim 2023

by BUGA 23

YOUTUBE

Contact information

Ellen Oswald, Gardening manager Luisenpark Mannheim:

+49 621 4100 549

ellen.oswald@stadtpark-mannheim.de

Final presentation

Garden of Twin Cities

Results of the planning-workshop
 October 4 -12, 2021
 Design planning for BUGA23 Mannheim
 and permanent exposition in the Luisenpark Mannheim

Präsentation 13.10.2021-E-1

PDF document

PADLET DRIVE

Garden of Twin Cities - Planning Works

Thursday, October 7

11:00-11:15 UTC	Hello - General Information
11:15-11:45 UTC	Work in subgroups
11:45-12:00 UTC	Pause
12:00-12:30 UTC	Plenary
12:30-13:00 UTC	Arrangements
	Preview Monday

October 7

PDF document

PADLET DRIVE

Timeslots for individual consultation October 11

Individual consultation

Monday, October 11 (meeting via webex <https://help.webex.com/en-US/article/nrbgeodt/Jo>)

UTC		local time
07:00-07:30	Zhenjiang	15:00-15:30
07:45-08:15	Haifa	10:45-11:15
08:30-09:00	Chişinău	11:30-12:00
10:00-10:30	Klaipėda	13:00-13:30
10:45-11:15	Riesa	12:45-13:15
11:30-12:00	Toulon	13:30-14:00
13:00-13:30	Windsor	09:00-09:30
Tuesday, 12	Bydgoszcz	08:30-09:00

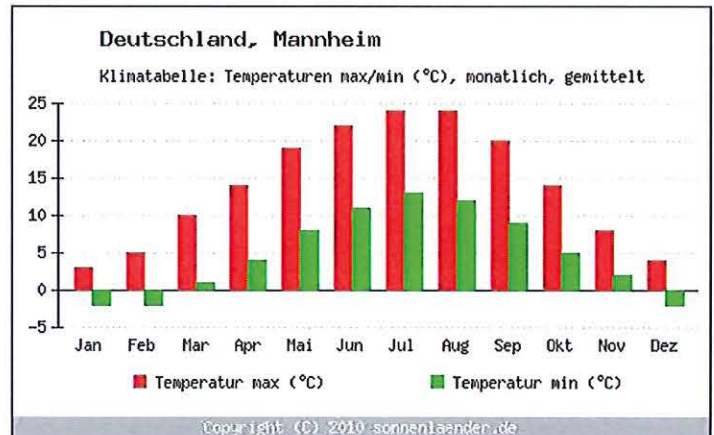
Individual consultations

PDF document

PADLET DRIVE

Temperatures in Mannheim

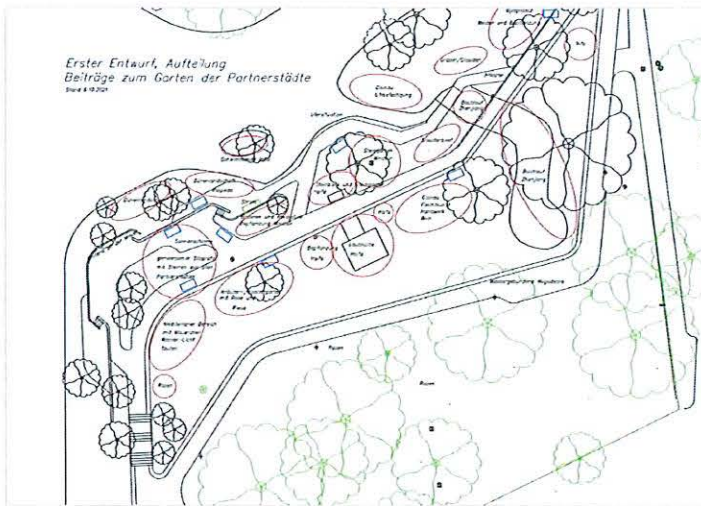
The sprinkler system makes us independent of rain.



First draft

More comments and some English translation in the document
 "Results Wednesday, October 6"

Results October 7



GartenderPartnerst_dte15.pdf
 PDF document
 PADLET DRIVE

Even more Questions

- Plants in tubs
- Rock gardens
- Typical planting arrangement and typical colors
- Typical use of plants
- Stories, events, symbolism, mysticism related to plants
- Stones and floor coverings
- "Weichzeichner"
- Typical sculptures, furniture, works of regional artists, coats of arms
- Presentations typical for the city (feast activities), which can take place in the garden during BUGA



Even more questions
 PDF document
 PADLET DRIVE

Results Wednesday, October 6

MANNHEIM

Garden of Twin Cities - Planning Workshop

Wednesday, October 6

- 11:00-12:00 UTC Presentation of key results and discussion
- 12:00-12:20 UTC First priorities
- 12:20-12:40 UTC Break
- 12:40-13:00 UTC Arrangements for Thursday

October_6.pdf
 PDF document
 PADLET DRIVE

Garden site - video 4



Mannheim Luisenpark International Garden 4
 by Stadt Mannheim
 YOUTUBE

Garden site - video 3



Mannheim Luisenpark International Garden 3
by Stadt Mannheim

YOUTUBE

Garden site - technical



Skizze.pptx

Powerpoint presentation

PADLET DRIVE

Garden site - video 2



Mannheim Luisenpark International Garden 2
by Stadt Mannheim

YOUTUBE

Time Schedule

Workshop Garden of Twin Cities – Time Schedule

October 4 to 13, 2021

All time details in UTC time			
UTC +2	UTC +3	UTC +8	UTC -4
France (Toulon)	Israel (Haifa)	China (Qingdao, Zhenjiang)	Canada (Windsor)
Germany (Mannheim, Riesa)	Lithuania (Klaipėda)		
Poland (Bydgoszcz)	Moldova (Chisinau)		

Time Schedule October 4 - 13, 2021

Date and Time	Activity	Participants & local times
All information: https://padlet.com/piaschanne/jwo7zxxzq090e3ig (password: BUGA)		
Thursday September 30	Technical check Login link will be sent before	All participants: Windsor (UTC-4) 7:00-8:00 Bydgoszcz, Riesa, Toulon, Mannheim (UTC+1) 13:00-14:00

2021_Garden_Workshop_Schedule.pdf

PDF document

PADLET DRIVE

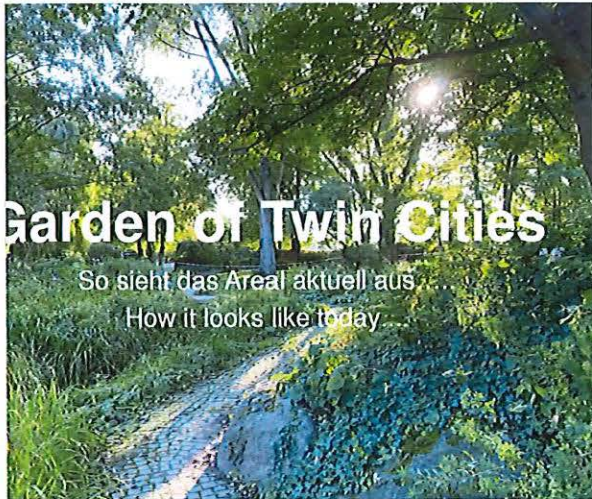
Garden site - video 1



Mannheim Luisenpark International Garden 1
by Stadt Mannheim

YOUTUBE

Information about the garden site



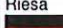



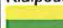


Garden_Area_photos.pdf

PDF document

PADLET DRIVE

September 30, 2021 => 11 UTC

Twin City	UTC	Local time
Bydgoszcz 	UTC + 2	13:00
Toulon 	UTC + 2	13:00
Riesa 	UTC + 2	13:00
Mannheim 	UTC + 2	13:00
Haifa 	UTC + 3	14:00
Klaipėda 	UTC + 3	14:00
Chisinau 	UTC + 3	14:00

Technical_check.UTC.pdf

PDF document

PADLET DRIVE

Guiding questions

These questions will guide the planning steps....

Planning workshop for the "Garden of Twin Cities"

The city of Mannheim and the Luisenpark invite representatives of the twin cities to an online planning workshop from October 4 to 13, 2021. They will work together with experts from the Luisenpark with the aim of developing the horticultural concept for a "Garden of the Twin Cities".

The following questions will guide the planning steps:

Question 1: Basic theme "Willow":

The tree species willow is the connecting element of the Garden of the Twin Cities. The aim is to create a willow garden which represents all the cities involved.

- Which willow species is most common in the twin city or in the vicinity? Or has the willow disappeared from the city, possibly because it cannot thrive there?
- Are there any typical willow plantings in the twin city?
- Is there a willow species used for certain purposes? (Construction, basket or fence)

Guiding_questions_engl_.pdf

PDF document

PADLET DRIVE

Bydgoszcz

Bydgoszcz, Poland

Bogna Rybacka

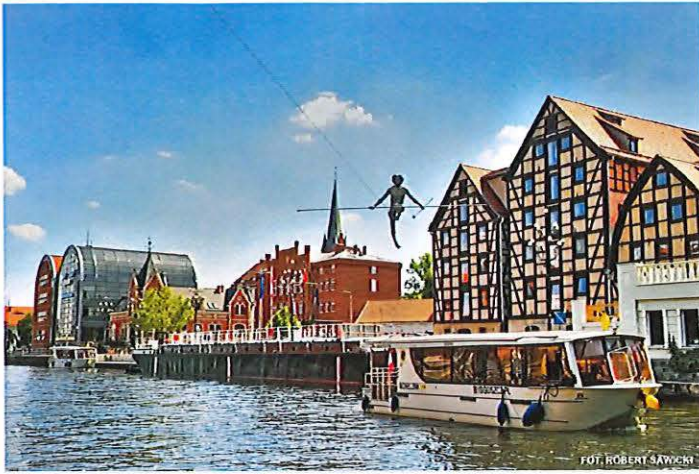
Head of Greenery and Nature Conservation Department

Municipality of Bydgoszcz, Poland

e-mail: bogna.rybacka@um.bydgoszcz.pl

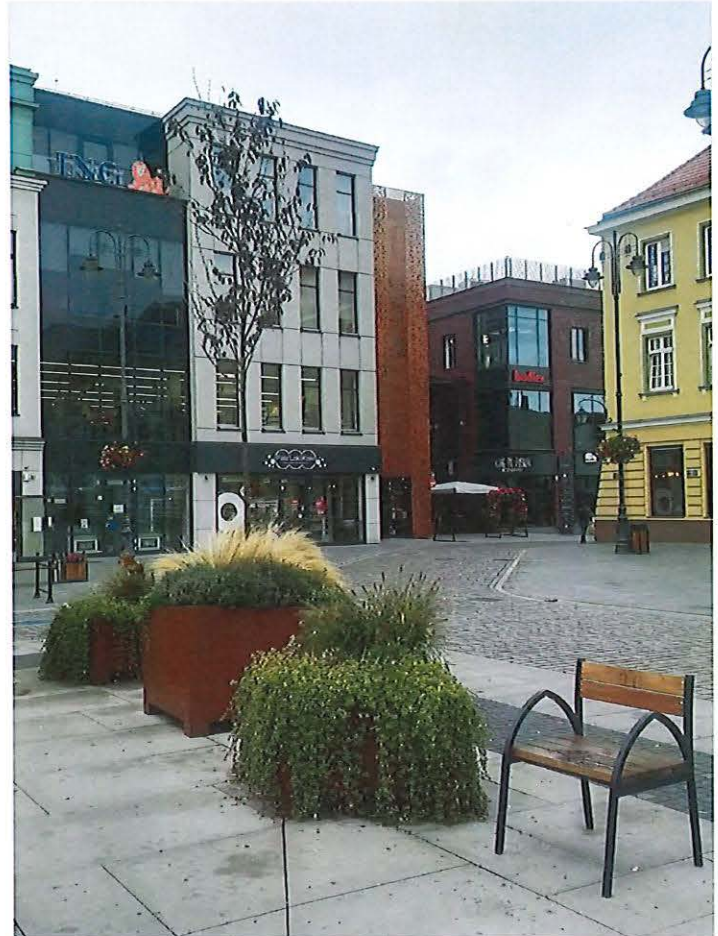


Bydgoszcz City symbols



Old Market Square in Bydgoszcz and a modern Corten "flower pot".

Old Market Square in Bydgoszcz - modern Corten "pot" and a bench inspired by historic old granaries.



The City symbol



Bydgoszcz Flower Market

Installation for a padlock for lovers, inspired by three old granaries in Bydgoszcz.



Spichrze_k_dki_Wizualizacja.pdf

PDF document

PADLET DRIVE

Old Market Square in Bydgoszcz

Bench and flower pots inspired by old granaries in Bydgoszcz.



Greenery in Bydgoszcz - selected photos.

Bydgoskie parki oraz tereny zieleni.

Bydgoskie parki oraz tereny zieleni

Bożna Rybacka
Ogrodnik Miejski
Urząd Miasta Bydgoszczy

www.bydgoszcz.pl www.fb.com/bydgoszczpl

Bydgoszcz_greenery.pdf
PDF document
PADLET DRIVE



Bydgoszcz - our plants

Willows and other plants in Bydgoszcz

1. Natural habitats – *Salix alba* (the most popular), *Salix caprea*, *Salix cinerea*, *Salix fragilis*,
2. Introduced, etc. – *Salix alba* Tristis (most popular), *Salix purpurea* Nana, *Salix integra* Hakuro Nishiki

Other plant species (characteristic and the most popular)

1. Natural habitats:

· trees: *Quercus robur*, *Acer platanoides*, *Acer pseudoplatanus*,
Tilia cordata, *Ulmus laevis*, *Alnus glutinosa*, *Populus xcanescens*
Populus nigra

· shrubs: *Prunus spinosa*, *Sambucus nigra*

2. Introduced, etc

· trees: *Aesculus hippocastanum* sp, *Aesculus x carnea* sp,
Crataegus laevigata Paul's Scarlet, *Prunus serrulata* Kanzan, *Ukon*,
Ginkgo biloba, *Quercus palustris*, *Platanus acerifolia*, *Salix alba*
Tristis,

· shrubs: *Rhododendron* sp., *Syringa vulgaris* sp, *Syringa meyeri*
sp., *Spiraea japonica*, *cineraea* sp, *Hydrangea* sp., *rosa* Marathon

· perennial: *Sedum spectabile*, sp., *Paeony* sp, *Salvia nemorosa* sp.,
Hemerocallis sp., *Hosta* sp.,

· grass: *Carex* sp., *Deschampsia caespitosa* sp., *Penissetum* sp.,
Hakonechloa sp., *Stipa* sp.,

3. Spring blossom bulbs flowers (many botanic species of *Crocus*,
Narcissus, *Tulipa*, *Hyacinthus*, *Scilla*, *Puschkinia*, etc.)



Bydgoszcz_natural_river_habitat.pdf

PDF document

PADLET DRIVE





Brda riverside



Garden Concept polska

Koncepcja BUGA - wkład w wystawę Ogród Miast Partnerskich

Mannheim jest miastem partnerskim z Bydgoszczą (Polska), Berlinem Charlottenburgiem-Wilmersdorferm i Riesą (Niemcy), Kiszyniowem (Republika Mołdawii), Kłajpedą (Litwa), Tulonem (Francja), Windsorze (Kanada), Zhenjiang i Qingdao (Chiny), Hajfą (Izrael) oraz Swansea (Walia, Wielka Brytania).

Przedstawiciele miast partnerskich wspólnie z kolegami z Mannheim planują ogród na Federalną Wystawę Ogrodniczą (BUGA 23) w Mannheim. Ten "Ogród Miast Partnerskich" zostanie po BUGA 23. Zostanie utrzymany w parku Luisenpark i będzie mógł być w każdej chwili wykorzystany jako punkt kontaktowy w temacie miast partnerskich w mieście Mannheim.

Planowanie w październiku 2021 r. odbędzie się online ze względu na utrudnienia w podróży związane z pandemią.

Dotychczasowe zadania:

Garden_Concept_polska.pdf

PDF document

PADLET DRIVE

Guiding questions pol

These questions will guide the planning steps....

- Jak może wyglądać typowy wksztu uu wierzbzy z terenu miasta partnerskiego? Ktore wierzby dobrze kojarzą się z typowymi zadrzewieniami w mieście?
- Co miasto partnerskie może wniesić do tematu wierzbwych ogrodów? - Nie zawsze musi to być duże drzewo. Niewielkie krzewy i krzaki, wiklinowy plot, rzeźba z wierzby lub podobne są również możliwe.
- Dostawy roślin: Czy wierzby z miast partnerskich mogą być dostarczone i przesadzone? Wierzby te mogą być wysyłane w każdej wielkości jako drzewa i krzewy przez firmę spedycyjną aż do sadzonek/drewna w butelkach.

Kwestia 2: Zaprojektowanie tematu podstawowego - nasadzenia w połączeniu z wierzbami

Temat podstawowy "Wierzba" stanowi strukturę, element łączący ogrodu. Kolejnym etapem planowania jest wypełnienie tych obszarów propozycjami projektowymi z miast partnerskich.

- Czy istnieją typowe, rozpoznawalne propozycje projektowe i rośliny dla ogrodu miast partnerskich, które możemy skojarzyć z wierzbą?

1

Guiding_questions_pol.pdf

PDF document

PADLET DRIVE

Haifa

Hifa, Israel

Netta Talmor, Head of Landscape Planning Department - Haifa

Municipality

e-mail: netat@haifa.muni.il



Design Workshop Preliminary Ideas

The Willow in Israeli culture
Sukkot Holiday - 4 species

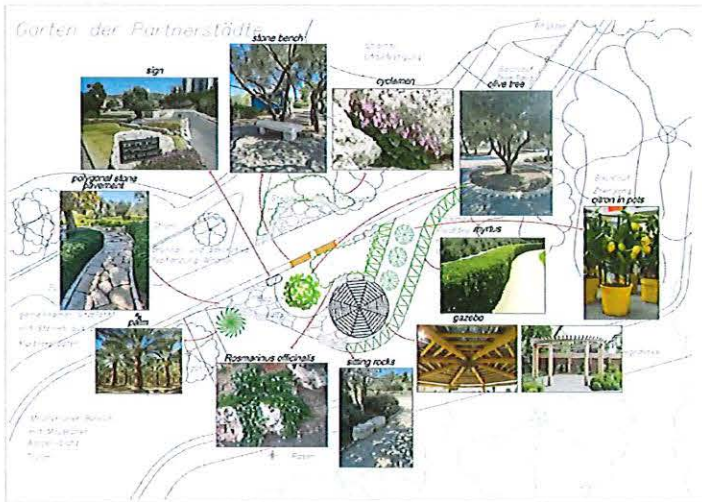


_____ .pptx

Powerpoint presentation

PADLET DRIVE

Twin Cities Garden - Haifa



twin_Cities_garden__haifa.pdf

PDF document

PADLET DRIVE

Gazebo



Stone Pavement



Typical Garden Sign



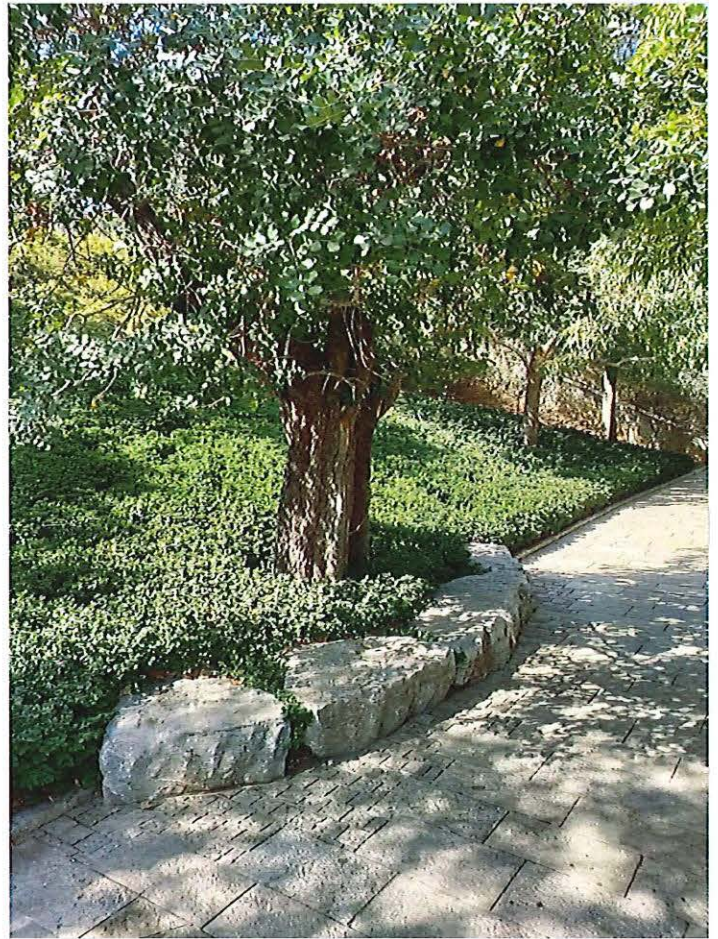
Round Gazebo



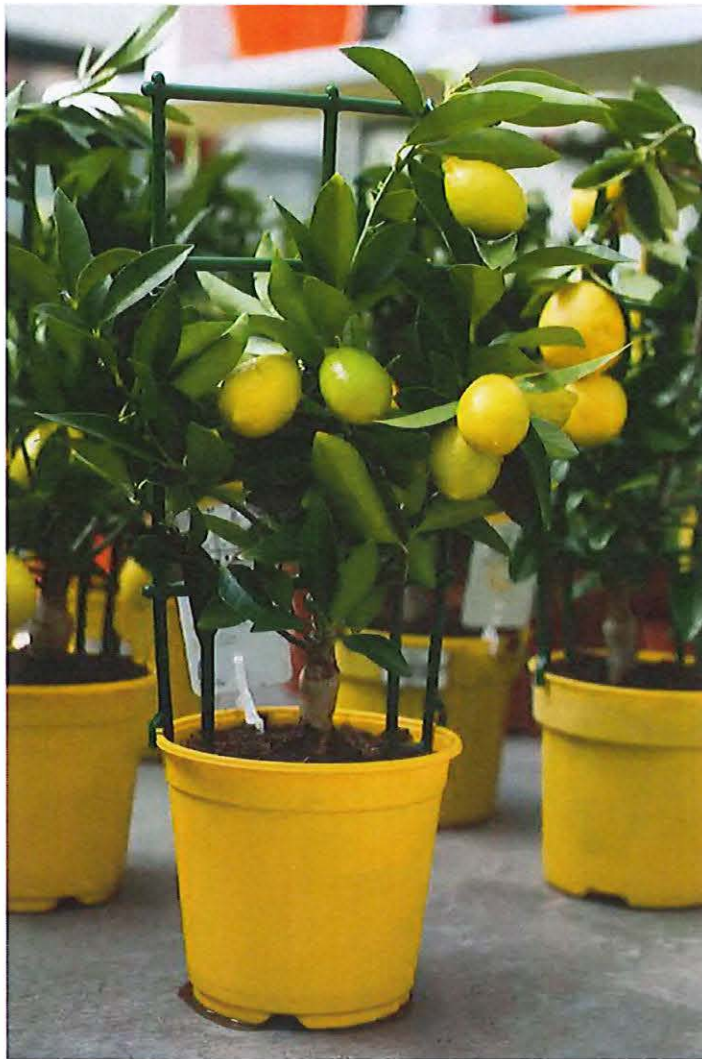
Stone Bench



Sitting Rocks



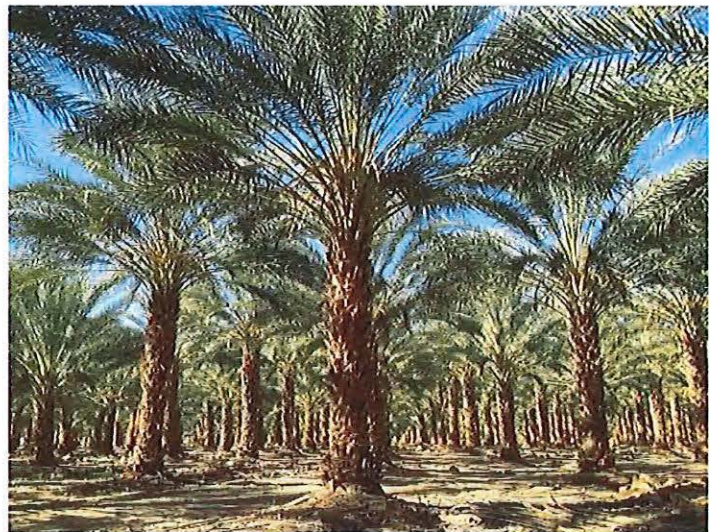
Citron Trees in Pots



Myrtus



Date Palm Tree



Large Pots for Citron Trees



Olive Tree



Garden Concept hebrew

קונספט לתרומת תערוכת BUGA לגן הערים התאומות

העיר מאנהיים שיתפה ערים עם בידושץ' (פולין), ברלין שרלוטנבורג-וילמרסדורף וריסה (גרמניה), צ'יסנאו (רפובליקת מולדובה), קליפדה (ליטא), טולון (צרפת), וינדזור (קנדה), ג'נליאנג וצ'ינגדאו (סין), חיפה (ישראל) וסונסי (וילס, ברטיניה).

נציגי הערים השתתפות מתכננים מ לתערוכת הגנות הפדרלית (BUGA 23) במנהיים יחד עם עמיתים ממנהיים. "גן הערים התאומות" יישמר לאחר BUGA 23. הוא מתחזק בתוך סגור לאינספארק ויכול לשמש בכל עת כנקודת מפגש בווסא ערי השותפים במנהיים.

התכנון לאוקטובר 2021 יתקיים באופן מקוון עקב ממשלה נסיעה שנגרמו כתוצאה מהמגיפה.

משימה:

"גן הערים התאומות" נועד לתאר את מטון הערים התאומות של מנהיים ובמקביל להיות מוכר כפרויקט המתמקד במשותף ובמה שמחבר אותן. אסור שהיו שורות של גינות. במקום זאת, נועדה הבנה אמיתית של גינה משותפת שכל עיר תאומה מזהה את עצמה.

Garden_Concept_heb.pdf

PDF document

PADLET DRIVE

Cyclamen



Rosmarinus Officinalis

Guiding questions hebrew

These questions will guide the planning steps...

סדנה לתכנון הגן המשותף של הערים התאומות

העיר מנהיים ולאספארק מזמינים אתכם לסדנת תכנון מקוננת בין התאריכים 4 עד 13 באוקטובר 2021. נביגי הערים התאומות עובדים יחד עם מומחים מלאספארק כדי לפתח את הרעיון הננוי ל"גן הערים התאומות".

השאלות הבאות יתנו את שלבי התכנון:

שאלה 1: נושא בסיסי "מרעה"

ערכת מיני העצים היא המרכיב המקשר של הגן של הערים התאומות. יש ליצור גינת ערבה משוחפת

- איזה סוג ערבה גדול בתדירות הגבוהה ביותר בעיר התאומה או בסביבה או שהוא משמש למטרות מסוימות?
- האם יש קשרים מסוימים בין העיר התאומה למרעה? יגול להיות גם שהמרעה בעיר התאומה לצעירי כבר אינו זמין או אינו יכול לשגשג שם מסיבות מסוימות.
- כיצד יכולה ההיראות תרומה אופיינית למרעה מהאזור שמסביב לעיר התאומה? אילו מרעה יגול להיות קשור לטיב השתילה עירונית טיפוסית?
- מה יכולה עיר התאומים לתרום לנושא גינת המרעה? - זה לא תמיד חייב להיות העץ הנדול. שיהיה

Guiding_questions_he.pdf

PDF document

PADLET DRIVE

Garden of Twin Cities Mannheim

Dune landscape and Floating island



AURELIJA JANKAUSKAITĖ-BUKANTIENĖ
LANDSCAPE ARCHITECT OF URBANISM AND ARCHITECTURE DEPARTMENT
KLAIPĖDA MUNICIPALITY
E-MAIL: AURELIJA.JANKAUSKAITE@KLAIPEDA.LT

Sala ir kopa

PDF document

PADLET DRIVE

Klaipeda

Klaipėda, Lithuania

Aurelija Jankauskaitė-Bukantiėnė

LANDSCAPE ARCHITECT OF URBANISM AND ARCHITECTURE
DEPARTMENT

e-mail: aurelija.jankauskaite@klaipeda.lt



Garden of Twin Cities Mannheim



AURELIJA JANKAUSKAITĖ-BUKANTIENĖ
LANDSCAPE ARCHITECT OF URBANISM AND ARCHITECTURE DEPART
KLAIPĖDA MUNICIPALITY
E-MAIL: AURELIJA.JANKAUSKAITE@KLAIPEDA.LT

willow_in_the_Klaip_da.pdf

PDF document

PADLET DRIVE

Dune landscape and floating island

Includes information on the dunes and the floating artificial island.

Garden Concept lietuviškas

Užduotis kuruoti ir realizuoti naują miesto sodą. Sodinimo technologių patarimą gausite susitikimo vieta Manheimo miestų-partnerių tema Išs ir po ekspozicijos BUGA 23.

Dėl pandemijos sukeltų kėlavimo apribojimų, planavimo darbai 2021 m. spalį vyks nuotoliniu būdu.

Užduočių nustatymas

Projekto „Miestų-partnerių sodas“ tikslas – parodyti Manheimo miestų-partnerių įvairovę, tuo pačiu pabrėžiant jų bendrumą ir tai, kas jungia. Tai neturi būti sodų eilė. Pagrindinė mintis – bendrame sode įkūnyti jungtinį darbą taip, kad kiekvienas miestas-partneris galėtų atpažinti save.

Planuojamo sodo bendra tema – gluosnis. Visame pasaulyje yra paplitusios įvairios gluosnių rūšys, todėl yra daroma prielaida, kad šią temą galės pritaikyti visi miestai-partneriai.

Tikimasi, kad bus sukurtas bendras gluosnių sodas, kurį miestai-partneriai užpildys jų šaliai būdingais atributais. Gali būti naudojami tipiniai augalai ir jų sodinimo būdai, regioninės medžiagos, vaizdo įrašai, nuotraukos, meniniai eksponatai ir kt.

Planavimo seminaro metu bus nubrėžtos pagrindinės galės, kaip viename sode apjungti visų bendrą indėlį. 2023 m. Federalinės sodininkystės ekspozicijos metu (ir vėliau) kiekvieną miestų-partnerių turį pristatyti šaliai būdingi augalai arba ypatingas dizaino elementas.

Garden_Concept_lietuvi_kas.pdf

PDF document

PADLET DRIVE

Guiding questions lietuviskas

These questions will guide the planning steps....

Miestų-partnerių bendro sodo planavimo seminaras

Manheimo miestas ir Luisenparkas 2021 m. spalio 4–13 kviečia į nuotolinį planavimo seminarą. Miestų-partnerių atstovai kartu su Luisenparko kvalifikuotais specialistais parengs „Miestų-partnerių sodo“ sodininkystės koncepciją.

Toliau pateikti klausimai padės planuoti darbo etapus.

1 klausimas: pagrindinė tema – „Gluosnis“

Turi būti sukurtas bendras gluosnių sodas, kuriame gluosnis taps miestų-partnerių sodą apjungiančiu elementu.

- Kokia gluosnių rūšis daugiausiai paplitusi mieste-partnerijoje ar jo apylinkėse ir (arba) yra naudojama konkrečiam tikslui?
- Ar miestas-partneris turi konkrečių sąsajų su gluosniu? Gali būti ir taip, kad mieste-partnerijoje gluosnių nėra arba dėl tam tikrų priežasčių jie ten neauga.
- Kokį indėlį gluosniams galėtų padaryti miestas-partneris ir jo apylinkės? Kokius gluosnius galima puikiai derinti su tipiniu miesto apželdinimu?
- Kaip miestas-partneris galėtų prisidėti prie gluosnių sodo temos? Gluosnis ne visada

Guiding_questions_lietuviskas.pdf

PDF document

PADLET DRIVE

Windsor

Windsor, Ontario

Wanda Letourneau, City of Windsor Parks- Horticulture Manager,
1149 Giles Blvd East, Windsor, Ontario, N9A 4G5, 1- 519-818-4909.

email

wletourneau@citywindsor.ca



[Windsor Parks in Bloom \(Part One\) - YouTube](#)

[Windsor Parks in Bloom \(Part Two\) - YouTube](#)

[Riverfront and Parks: City of Windsor Community Videos 2019 -](#)

[YouTube](#)

[Mayor's Welcome: City of Windsor Community Videos - YouTube](#)

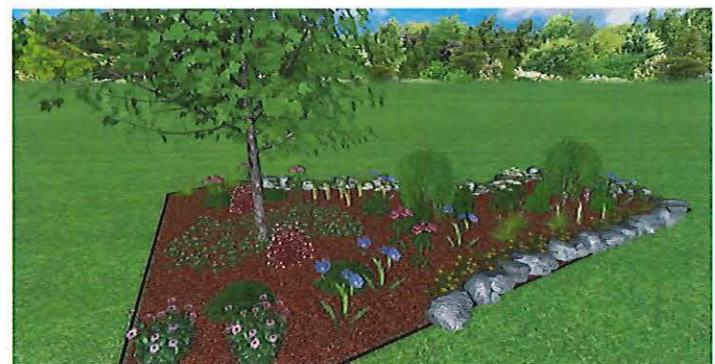


[Windsor Parks in Bloom \(Part Two\)](#)

by cityofwindsor

YOUTUBE

Purposed rock garden for Luisenpark



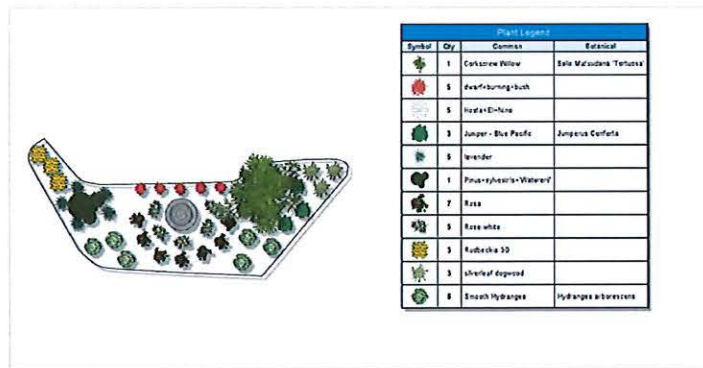
Purposed rock garden for the Luisenpark



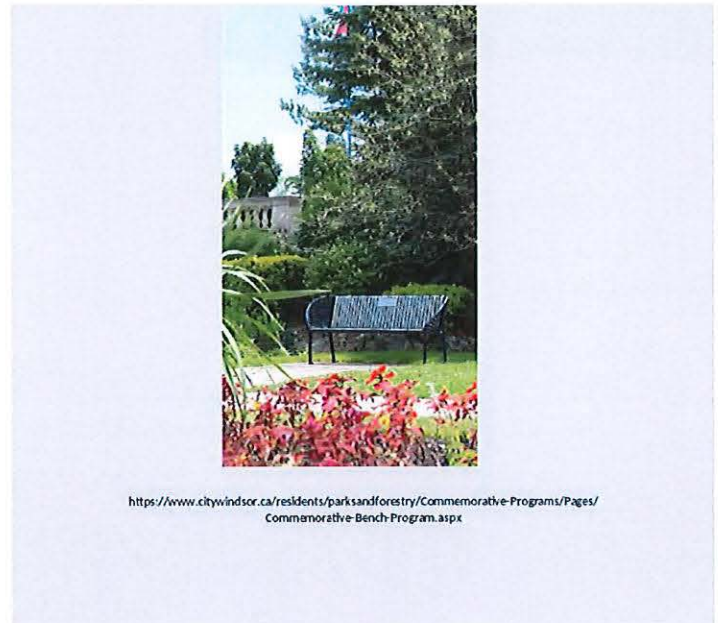
Purposed fountain/ topiary for the Luisenpark



Purposed fountain/ topiary plant list



Topiaries
Word document
PADLET DRIVE



<https://www.citywindsor.ca/residents/parksandforestry/Commemorative-Programs/Pages/Commemorative-Bench-Program.aspx>

Bench
Word document
PADLET DRIVE

Waste Management

Windsor Ontario

The City of Windsor makes use of a variety of in-ground Garbage and Recycle containers. Depending on use, these containers can be emptied daily, weekly, monthly or longer.



Waste Management

PDF document

PADLET DRIVE

City of Windsor Rose

Windsor Ontario

The City of Windsor is known as "The City of Roses".

The City of Windsor Rose is a Nell rose that produces deep red strongly fragrant blooms.



Rose

PDF document

PADLET DRIVE

emblem in 1797. It was recommended by a special committee of botanists to the Ontario Horticultural Association. In a British botanical work published in 1760 there is a reference to the trilliums as "the herb True Love of Canada."



Found in the forests and woodlands of Ontario, the white trillium blooms in late April and May. The blooms are very sensitive to light, and the white flowers usually bend toward the sun as it moves

White Trillium

PDF document

PADLET DRIVE



Raised Rock Walls

PDF document

PADLET DRIVE



Maple Leaf

PDF document

PADLET DRIVE



Animal Topiaries

PDF document

PADLET DRIVE

Local Native Plants to Essex County, Windsor, Ontario

Plants	Bloom
Height	
1 Big bluestem- <i>Andropogon gerardii</i> 3-5' flowers 6-10'	July-Oct
2 Blackeyed Susan- <i>Rudbeckia hirta</i> 2-3'	June-Oct
3 Blue flag iris- <i>Iris versicolor</i> 2-2.5'	May-July
4 Blue vervain- <i>Verbena hastata</i> 2-6'	July-Sept
5 Boneset- <i>Eupatorium perfoliatum</i> 4-6'	July-Oct
6 Butterfly weed- <i>Asclepias tuberosa</i> 1-2.5'	June-Sept
7 Common milkweed- <i>Asclepias syriaca</i> 3-6'	June-Aug
8 Compass plant- <i>Silphium laciniatum</i> 3-9'	July-Sept
9 Culver's root- <i>Veronicastrum virginicum</i>	June-Sept

Local Native Plants to Essex County

PDF document

PADLET DRIVE



Planters

PDF document

PADLET DRIVE

Twin Cities plant list from Coventry Park

Plants that are highlighted

Yellow - are unique to the Park
Green - unique for creeping habit
Blue - attract butterflies
Purple - drought tolerant

Achy Breaky Heart Grass- *Calamagrostis brachytricha*
Amaranthus
Anerium Wisteria

Anise Hyssop- *Agastache foeniculum*

Apple Mint- *Mentha suaveolens*

Arctic dwarf bush- *Betula nana*

Bald Cypress- *Taxodium distichum*

Balloon Plant- *Platycodon grandiflorus*

Banks of Gold- *Platanus occidentalis*

Bear's Breaches- *Acanthus*

Bears Breaches

Beeblossom- *Gaura lindheimeri*

Bergenia- *Bergenia cruegeriana*

Black Cohosh- *Actaea racemosa*

Black Coral- *Polypodium luteum*

Blackberry Lily- *Iris domestica*

Bloody Cranesbill- *Geranium sanguineum*

Blue Fake Indigo- *Baptisia australis*

Blue Oat Grass- *Helictotrichon sempervirens*

Blue Spurge Euphorbia- *Euphorbia characias 'Glacier Blue'*

Bluebeard- *Caryopteris*

Borage- *Borago officinalis*

Bronze Fennel- *Foeniculum vulgare 'Purpureum'*

Bunchberry

Burnweed- *Silva sessilis*

Candytuft- *Iberis sempervirens*

Canna Lily- *Canna Yellow*

Cardinal Flower- *Lobelia cardinalis*

Chastetree- *Viburnum coccineum*

Coventry Park

Word document

PADLET DRIVE

Guiding questions

These questions will guide the planning steps....

Planning workshop for the "Garden of Twin Cities"

The city of Mannheim and the Luisenpark invite representatives of the twin cities to an online planning workshop from October 4 to 13, 2021. They will work together with experts from the Luisenpark with the aim of developing the horticultural concept for a "Garden of the Twin Cities".

The following questions will guide the planning steps:

Question 1: Basic theme "Willow":

The tree species willow is the connecting element of the Garden of the Twin Cities. The aim is to create a willow garden which represents all the cities involved.

- Which willow species is most common in the twin city or in the vicinity? Or has the willow disappeared from the city, possibly because it cannot thrive there?
- Are there any typical willow plantings in the twin city?
- Is there a willow species used for certain purposes? (Construction, basket or fence)

Guiding_questions_engl_.pdf

PDF document

PADLET DRIVE

Garden Concept

Project outline for the Garden of Twin Cities

A contribution to the BUGA exhibition

The city of Mannheim is twinned with a number of cities worldwide: Bydgoszcz (Poland), Berlin Charlottenburg-Wilmersdorf and Riesa (Germany), Chisinau (Republic of Moldova), Klaipeda (Lithuania), Toulon (France), Windsor (Canada), Zhenjiang and Qingdao (China), Haifa (Israel) and Swansea (Wales, UK).

Together with colleagues from Mannheim, representatives from these twin cities are planning a garden for the Federal Garden Show in Mannheim (BUGA 23). The "Garden of Twin Cities" is a long-term project and will live beyond BUGA 23. It will be maintained as part of "Luisenpark" and can be used as a focal point for international activities in Mannheim.

The planning workshop will take place online in October 2021 due to pandemic-related travel obstacles.

Task:

The "Garden of Twin Cities" is intended to mirror the diversity of Mannheim's twin cities, at the same time providing a focal point for international activities in Mannheim.

Garden_Concept_english.pdf

PDF document

PADLET DRIVE

Zhenjiang

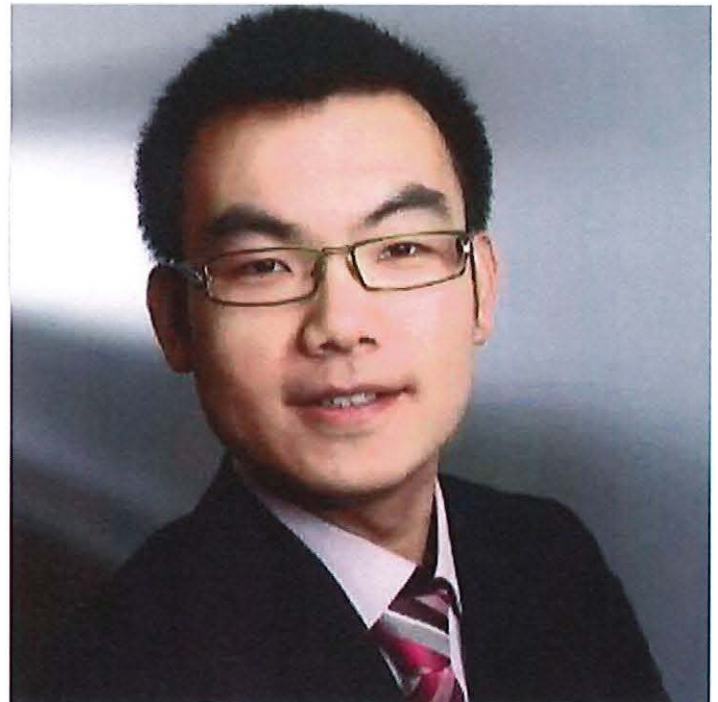
China Zhenjiang International Economic and Technical Cooperation co, Ltd

Li Jingkai

General manager of CZICC

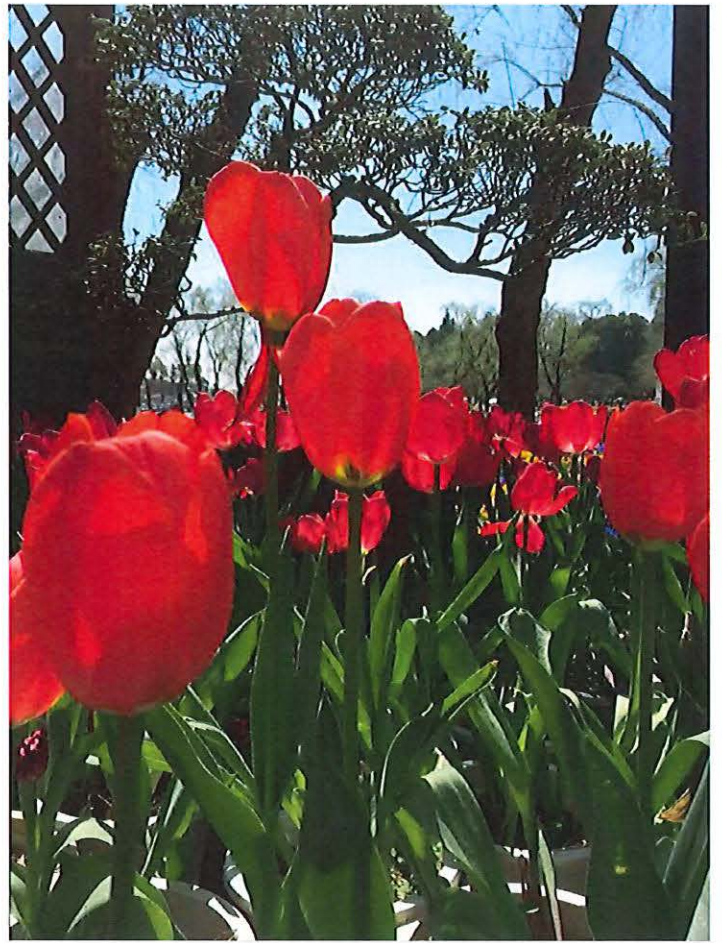
212004 nanshan Road.61 Zhenjiang,China

jingkai-li@czicc.com



Rhododendron

The city flower of Zhenjiang







Willow



The most common willow species in China is **weeping willow**.

In China, where there are willows, there must be water, so we usually like to plant willows by the river or lake

Pr_sentation_Zhenjiang.pdf

PDF document

PADLET DRIVE

课题1：基本主题“柳树”

“柳树科”是友好城市花园的连接元素。应该设计一个共同的柳树花园。

- 哪种柳树最常生长在友好城市或者其周边，又或者用于特定用途？
- 友好城市和柳树是否有特定的联系？也有可能，在友好城市已经不再有柳树或者那里由于特定的原因柳树无法再茁壮生长。
- 如何从友好城市的环境中看出柳树的典型贡献？哪些柳树可以和各城市的典型种植很好地联系在一起？
- 友好城市可以对柳树花园主题有哪些表现？-不一定总是大的树木，可以设想小灌木林、矮林、篱笆、柳叶雕像等等。
- 植物运输：可以运输和移植来自友好城市的柳树吗？这些柳树可以作为乔木或者灌木以各种大小通过转发机构寄送，或者枝条/插枝通过瓶装邮寄。

课题2：基本设计主题—和柳树相关的种植

Guiding_questions_chin.pdf

PDF document

PADLET DRIVE

Garden Concept 中文

由于疫情导致旅行受阻，2021年10月的规划过程将在网上进行。

任务设置

“友好城市花园”旨在描绘友好城市多样性，同时也是一个突出共同性和关联性的项目。它不应该是成排连接的多个花园，而是一个真正意义上的共同花园，在其中每个友好城市都能找到自己。

设定了一个共同的主题作为花园设计的框架，柳树类在世界各地都很常见，因此柳树主题对于所有友好城市都是可行的。

设计一个共同的柳树花园，由友好城市添加具有地区典型的内容。典型的植物和植物设计、地区材料、视频、图画、艺术租赁等都可以占据一席之地。

设计研讨会旨在突出基本不同之处，从而将所有贡献聚集在一个有各自特性的共同花园中，每个友好城市都要展示植物的典型使用或者关于联邦园艺博览会2023的独特设计元素。

Garden_Concept_..pdf

PDF document

PADLET DRIVE

Chisinau

Chişinău, Republic of Moldova

Andrei GRAFOV

DEPUTY DIRECTOR GREEN SPACES MANAGEMENT Municipal Enterprise

E-mail: grafovandrei22@gmail.com

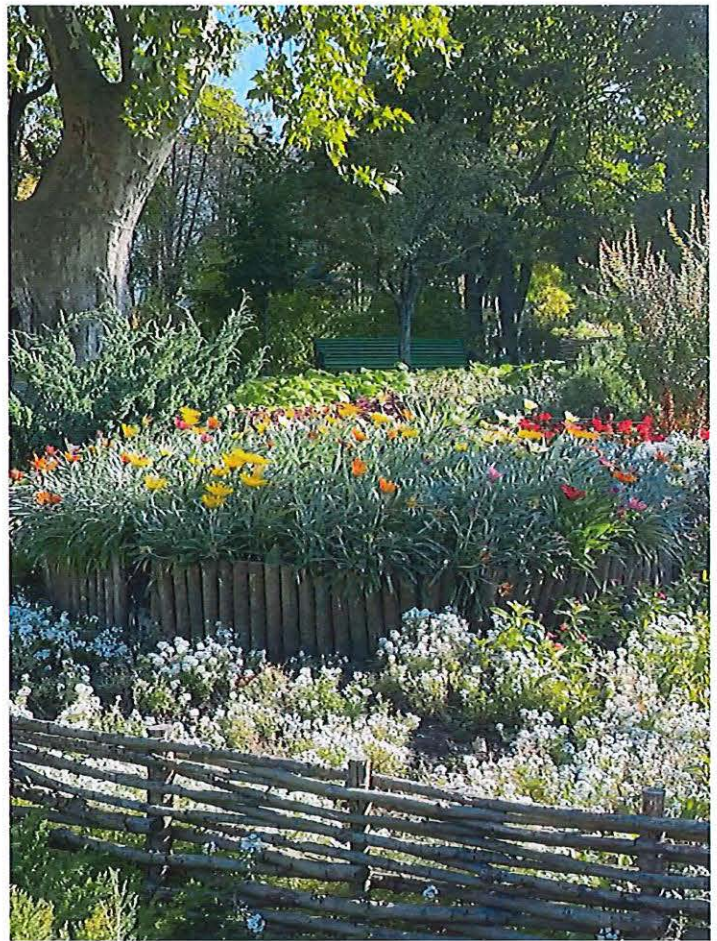


examples of stone foundations

(pictures from google.com)



Arrangement with handicrafts in Chisinau



Arrangement with handicrafts in Chisinau



Arrangement with handicrafts in Chisinau



Arrangement with handicrafts in Chisinau



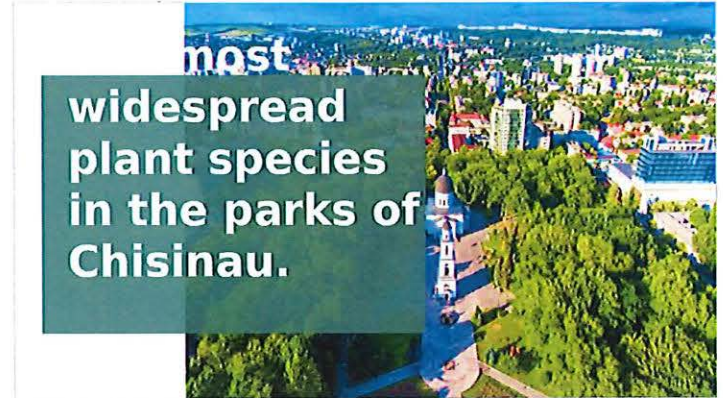
Arrangement with handicrafts in Chisinau



Arrangement with handicrafts in Chisinau

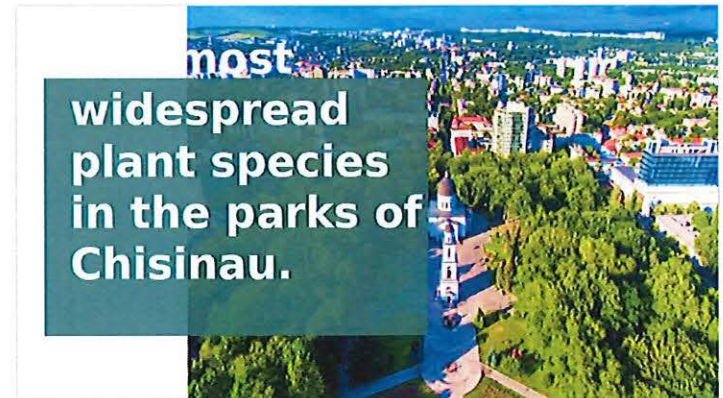


The most widespread plant species in the parks of Chisinau.



The_most_widespread_plant_species_in_the_parks_of_Chisinau_.pp
Powerpoint presentation
PADLET DRIVE

The most widespread plant species in the parks of Chisinau.



The_most_widespread_plant_species_in_the_parks_of_Chisinau_.pp
Powerpoint presentation
PADLET DRIVE

(Chişinău-pictures from google.com)



Chişinău-(pictures from google.com)

Willow in the Republic of Moldova




Republic of Moldova
CHISINAU CITY HALL
M. E. „ Green Spaces Management ”

Willow / Salix alba L.

Chişinău 2021

Willow_1_.pptx
Powerpoint presentation
PADLET DRIVE




Garden Concept Românesc

„Valley of the Roses" Park, Chişinău

Arrangement with traditional elements. Willow fence.

Atribuirea sarcinilor:

„Grădina orașelor înfrățite” trebuie să înfățișeze diversitatea orașelor înfrățite cu Mannheim și, în același timp, să fie recunoscută ca un proiect, care se concentrează pe ceea ce este comun și ceea ce le unește. Nu ar trebui să existe o succesiune de grădini. Mai degrabă, se intenționează un acord real cu privire la o grădină comună, în care fiecare oraș înfrățit să se recunoască.

Drept cadru pentru planificarea grădinii este dată o temă comună: specia de arbori, salcia. Speciile de salcie sunt răspândite în toată lumea. Se presupune că tema salciei poate fi realizată pentru toate orașele înfrățite.

Se creează o grădină comună cu sălcii, pe care orașele înfrățite o vor umple cu conținut tipic țărilor. Plantele tipice și planurile de plantare, materialele regionale, videoclipurile, imaginile, împrumuturile artistice etc. pot juca un rol.

Atelierul de planificare trebuie să stabilească cursul principal pentru a uni toate contribuțiile într-o grădină comună identificabilă. Fiecare oraș înfrățit ar trebui să fie prezentat cu o utilizare tipică a plantelor sau cu un element de design special pentru expoziția federală de horticultură 2023 și nu numai.

1

Garden_Concept_Rom_nesc.pdf

PDF document

PADLET DRIVE

Guiding questions ro

These questions will guide the planning steps...

Atelier de planificare a grădinii comune a orașelor înfrățite

Orașul Mannheim și Luisenpark vă invită la un atelier de planificare online în perioada 4 - 13 octombrie 2021. Reprezentanții orașelor înfrățite lucrează împreună cu specialiștii din Luisenpark, pentru a dezvolta conceptul horticol pentru o „grădină a orașelor înfrățite”.

Următoarele întrebări vor ghida etapele de proiectare:

Întrebare 1: Tema de bază „Salcia”

Salcia este elementul de legătură al grădinii orașelor înfrățite. Trebuie creată o grădină comună de sălcii

- Ce tip de salcie crește cel mai frecvent în orașul înfrățit sau în zona înconjurătoare sau este utilizat în anumite scopuri?
- Există anumite legături între orașul înfrățit și salcie? Ar putea exista și varianta în care salcia să nu existe în orașul înfrățit sau să nu poată crește acolo din anumite motive.
- Cum poate arăta o contribuție tipică din zona orașului înfrățit la tema Salcia? Ce sălcii pot fi asociate bine cu plantarea tipic urbană?
- Cu ce poate contribui orașul înfrățit la tema grădina de sălcii? - Nu trebuie să fie

Guiding_questions_ro.pdf

PDF document

PADLET DRIVE

Riesa

Ina Nicolai, Amtsleiterin Stadtbauamt

01589 Riesa, Rathausplatz 1

Tel: 0049 3525/700290

ina.nicolai@stadt-riesa.de

www.riesa.de

Kloster mit Kräuterbeeten



20.09. - 17.10.2021 2. Metallbildhauersymposium in Riesa:



Metallbildhauersymposium_in_Riesa.docx

Word document

PADLET DRIVE











hohler Lerchensporn

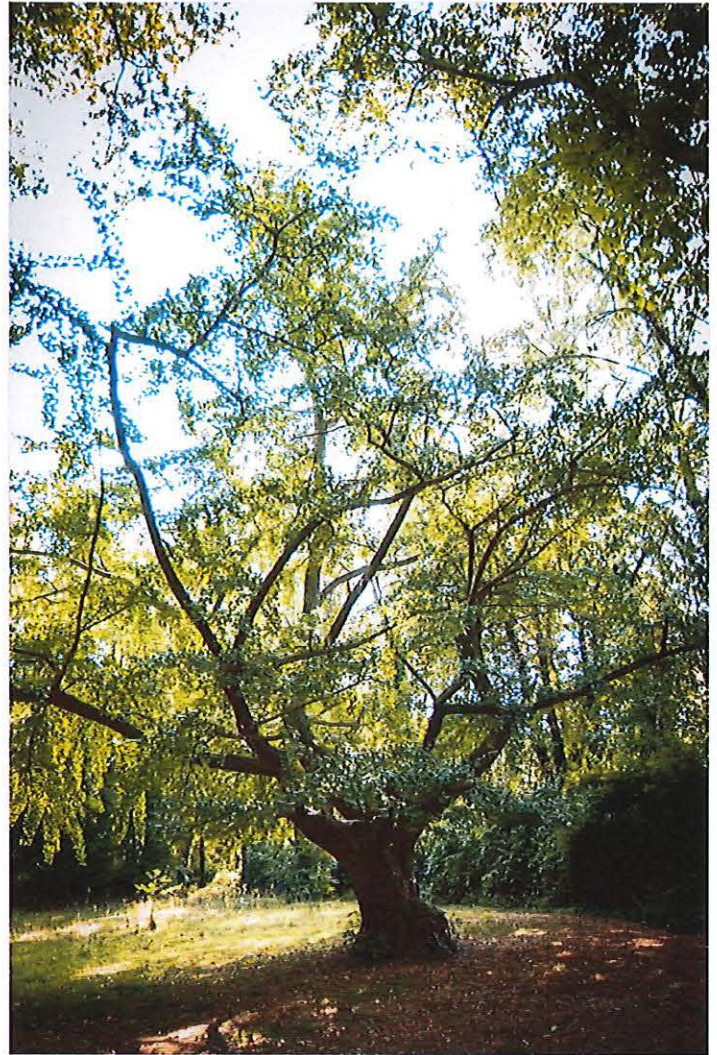




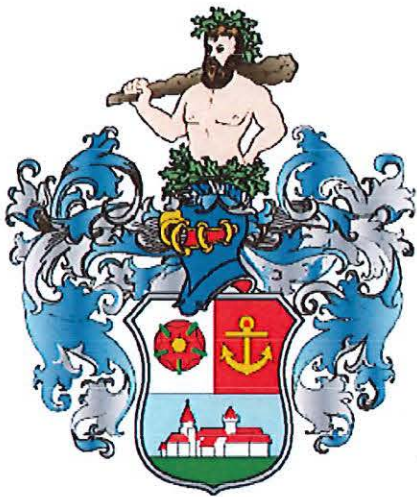
Bild_Gro_er_Eichenbockk_fer.docx

Word document

PADLET DRIVE



Stadtwappen Riesa



Stadtpark



Ginkgo in Jahnishausen

Erste Gedanken aus Riesa

Erste Gedanken aus Riesa

Die Stadt Riesa wird landschaftlich durch die Elbe und ihre Zulaufe Dölnitz und Jajna geprägt. Entsprechende Unterschutzstellungen als Landschaftsschutzgebiete sichern den Fortbestand der vorhandenen Restauwälder. Dabei spielt die Weide als Baumart keine Rolle, da es sich um Hartholzauwälder mit den Leitarten Steleiche, Ulmen, Gemeine Esche und Berg-Ahorn handelt. Diese Arten benötigen bzw. vertragen die Wechselweichte der immer wiederkehrenden Hochwasser der Elbe und ihrer Nebenflüsse.

Aus den Farben des Riesaer Stadtwappens heraus (blau, weiß) lassen sich bestimmt Unterpflanzungen aus der Strauch- und Staudenschicht finden. Frühblüher Aspekte treten hier insbesondere durch das Buschwindröschen und die Märzenbecherblüte auf. In einem besonderen Parkteil an der Jajnaue steht der Nationalerbebaum Nr. 2 von Deutschland, ein Ginkgo biloba (ca. 300 Jahre alt).

Ein ausgeprägt schönes Beispiel in Riesa ist in der Blüte der Glyzinie (Wisteria sinensis), an der gesamten Fassade des Riesaer Rathauses zu sehen, sowohl in aller Fülle vor dem Laubaustrieb, als auch in einer zweiten nachfolgenden Blüte im Laub. Dieser Blauregenbestand ist bereits über 100 Jahre alt.

Geht man nach dem Riesaer Stadtwappen, ist hier auch eine rote Rose zu sehen, die an den Freiherrn von Welk, den letzten privaten Besitzer des Rittergutes (heute Rathaus) erinnert. Natürlich wird in der Wappendarstellung ebenso an das Riesa Kloster erinnert, dem Ursprungsort von unserer Stadt mit dem Gründungsjahr 1119.

So konnte Riesa im Jahr 2019 sein 900-jähriges Bestehen feiern. Aus diesem Anlass wurden auch die Riesaer Partnerstädte mit einer Skulptur gewürdigt – Riesen (aus dem Stadtwappen), die eine Erdkugel tragen. Hier können Einwohner und Besucher von Riesa an einer Stele die Partnerstädte auswählen, diese sind dann durch einen Lichteffekt auf der Erdkugel sichtbar und zukünftig erhält man durch eine integrierte Sprachausgabe auch Informationen zu hören.

Aus den vielen Aspekten lassen sich sicher gemeinsam ein paar Anregungen für den Garten der Partnerstädte finden.

Riesa__Beschreibung_BUGA_Mannheim.docx

Word document

PADLET DRIVE

Aufgabenstellung:

Der „Garten der Partnerstädte“ soll die Vielfalt der Mannheimer Partnerstädte abbilden und gleichzeitig erkennbar ein Projekt sein, welches das Gemeinsame und Verbindende in den Vordergrund stellt. Es soll keine Aneinanderreihung von Gärten entstehen. Vielmehr ist eine echte Verständigung auf einen gemeinsamen Garten, in dem sich jede Partnerstadt wiedererkennbar, intendiert.

Als Rahmen für die Gartenplanung wird ein gemeinsames Thema vorgegeben: die Baumart Weide. Weidenarten sind weltweit verbreitet. Es wird davon ausgegangen, dass das Thema Weide für alle Partnerstädte umsetzbar ist.

Es entsteht ein gemeinsamer Weidengarten, den die Partnerstädte mit landestypischen Inhalten füllen. Typische Pflanzen und Pflanzpläne, regionale Materialien, Videos, Bilder, künstlerische Leihgaben etc. können eine Rolle spielen.

Der Planungsworkshop soll die wesentlichen Weichen stellen, um alle Beiträge in einem erkennbar gemeinsamen Garten zusammenzufügen. Jede Partnerstadt soll mit einer typischen Pflanzenverwendung oder einem besonderen Gestaltungselement zur Bundesgartenschau 2023 und darüber hinaus präsentiert sein.

Gartenkonzept.pdf

PDF document

PADLET DRIVE

Guiding questions / Leitfragen

Diese Fragen werden uns durch den Workshop führen....

Fragestellung 1: Grundthema „Weide“

Die Baumart Weide ist das verbindende Element des Gartens der Partnerstädte. Es soll ein gemeinsamer Weidengarten entstehen

- Welche Weidenart wächst in der Partnerstadt oder in der Umgebung am häufigsten oder wird für bestimmte Zwecke verwendet?
- Gibt es bestimmte Verbindungen der Partnerstadt zur Weide? Es könnte auch der Fall sein, dass die Weide in der Partnerstadt leider nicht mehr vorhanden ist oder dort aus bestimmten Gründen nicht gedeihen kann.
- Wie kann aus der Gegend der Partnerstadt ein typischer Beitrag zur Weide aussehen? Welche Weiden lassen sich mit der städte typischen Bepflanzung gut in Verbindung bringen?
- Was kann die Partnerstadt zum Thema Weidengarten beitragen? - Es muss nicht immer der große Baum sein. Denkbar sind auch kleine Sträucher und Büsche, ein Flechtzaun, eine Weiden skulptur o.ä.
- Pflanzenlieferungen: Können Weiden aus den Partnerstädten geliefert und verpflanzt werden? Diese Weiden können in allen Größen als Bäume und Sträucher per Spedition bis hin zum Steckling/Steckholz per Flaschenpost verschickt werden.

Fragestellung 2: Das Grundthema ausstellen - Pflanzungen in Verbindung mit Weiden

Garden_of_Twin_Cities_Leitfragen.pdf

PDF document

PADLET DRIVE

Toulon

Toulon, France

Olivier BADIE

Directeur

Direction des Espaces Verts

Métropole Toulon Provence Méditerranée

obadie@metropoletpm.fr

06 89 49 45 44

put in 1 photo of typical planting and explain



Gartenkonzept



Présentation projets Ville de Toulon

put in 1 photo of typical planting and explain



Manheim_toulon_buga_2023.pptx
Powerpoint presentation
PADLET DRIVE

Garden Concept francais

Tâche :

Le "Jardin des villes jumelées" doit représenter la diversité des villes jumelées de Mannheim et, en même temps, être un projet reconnaissable qui se concentre sur ce qu'elles ont en commun et ce qui les unit. L'idée n'est pas de créer une série de jardins. L'intention est plutôt de parvenir à une véritable compréhension d'un jardin commun dans lequel chaque ville jumelle se reconnaît.

Un thème commun sert de cadre à l'aménagement du jardin : l'espèce d'arbre qu'est le saule. Les espèces de saule sont présentes dans le monde entier. On suppose que le thème du saule est réalisable pour toutes les villes jumelées.

Un jardin commun de saules sera créé, que les villes jumelées rempliront de contenus typiques de leur pays. Les plantes typiques et les plans de plantation, le matériel régional, les vidéos, les photos, les prêts artistiques, etc. peuvent jouer un rôle.

L'atelier de planification doit fixer le cap essentiel pour rassembler toutes les contributions dans un jardin commun reconnaissable. Chaque ville partenaire devrait se voir présenter une utilisation typique des plantes ou un élément de conception particulier pour l'Exposition horticole fédérale 2023 et au-delà.

Conception_Garden_of_the_Twin_Cities_frz.pdf

PDF document

PADLET DRIVE

Guiding questions

- Quelle est l'espèce de saule qui pousse le plus fréquemment dans la ville jumelle ou dans les environs ou qui est utilisée à certaines fins ?
- Y a-t-il certains liens entre la ville jumelle et le saule ? Il se peut également que le saule ne soit malheureusement plus présent dans la ville jumelle ou qu'il ne puisse y prospérer pour certaines raisons.
- Quelle pourrait être une contribution typique au saule de la région de la ville jumelle ? Quels saules peuvent être bien associés à la plantation typique en ville ?
- Que peut apporter la ville jumelle au jardin des saules ? - Il n'est pas nécessaire que ce soit toujours le grand arbre. De petits arbustes et buissons, une clôture en osier, une sculpture en saule ou autre sont également envisageables.
- Fournitures pour plantes : Les saules des villes jumelles peuvent-ils être livrés et transplantés ? Ces saules peuvent être envoyés dans toutes les tailles en tant qu'arbres et arbustes par le transporteur jusqu'aux boutures/bois en bouteilles.

Question 2 : Conception du thème de base - plantations en rapport avec les saules

Le thème de base "Saule" fournit la structure, l'élément de liaison du jardin.

La prochaine étape de la planification consistera à remplir les zones avec les propositions de design des villes jumelées.

- Existe-t-il des propositions d'aménagement et des plantes typiques et reconnaissables pour le jardin des villes jumelées que nous pouvons associer au saule ?

Guiding_questions_fr.pdf

PDF document

PADLET DRIVE

Mannheim

Team Luisenpark



Team Luisenpark

Ellen Oswald
Gardening manager Luisenpark, Mannheim



Pr_sentation_Luisenpark_Englisch_gek_rzt.pdf
PDF document
PADLET DRIVE

Impressions of Luisenpark



Pr_sentation_Luisenpark.pdf
PDF document
PADLET DRIVE

Team International Office

Stefanie Miller
Pia Schanne
Jana Garbrecht
Sarah Uphoff
David Linse, Head of Department



Luisenpark_engl

Town Twinning Association Mannheim

Rüdiger Finke

Alexa Kilchling

http://partnerstadt-mannheim.de/de_DE/

FVSP Mannheim

Willkommen auf der Homepage des
Fördervereins Städtepartnerschaften
Mannheim e. V.

PARTNERSTADT-MANNHEIM



BUGA

Team Landscape Architecture and Exhibition Concept



Typical plantation

Perennials in Luisenpark Mannheim

Typical plantation

Perennials in Luisenpark Mannheim



Typical plantation

Perennials in Luisenpark Mannheim



Typical plantation

Perennials in Luisenpark Mannheim



※※※※※