



## WINDSOR NEW CITY HALL | FURNITURE FINISH OPTIONS

# BUILDING/ EXTERIOR FINISHES OVERVIEW



North Elevation

MARCH 24, 2016

NEW WINDSOR CITY HALL

# BUILDING/ EXTERIOR FINISHES OVERVIEW



North Elevation

# BUILDING/ EXTERIOR FINISHES OVERVIEW



South Elevation

MARCH 24, 2016

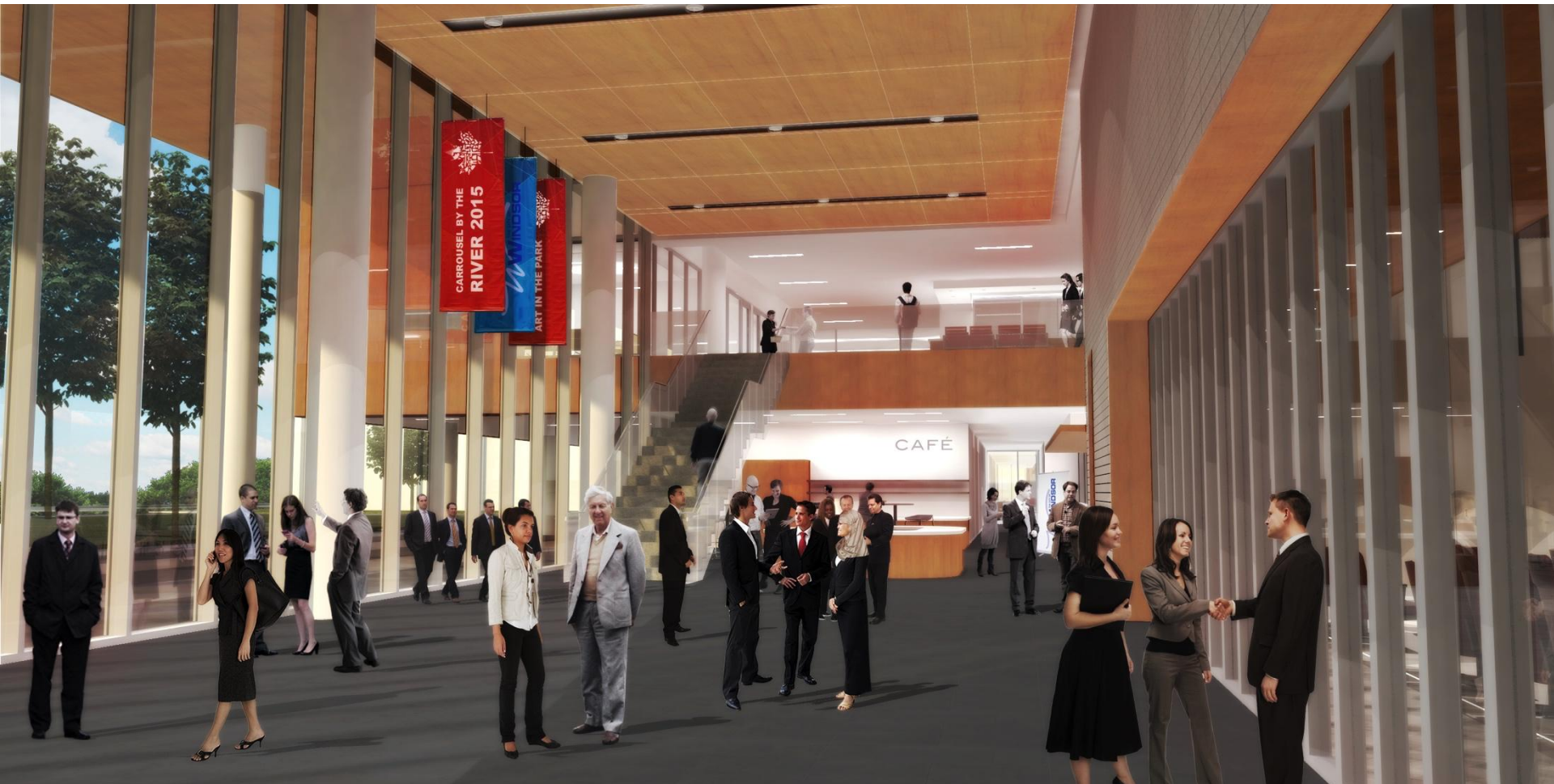
NEW WINDSOR CITY HALL

# BUILDING/ EXTERIOR FINISHES OVERVIEW



South Elevation

# BUILDING/ INTERIOR FINISHES OVERVIEW



Atrium

MARCH 24, 2016

NEW WINDSOR CITY HALL

# BUILDING/ INTERIOR FINISHES OVERVIEW



Wood plank soffit →  
(same as interior ceiling  
but reinforced)

Wood plank ceiling  
(20% micro-perforated)

Column with  
drywall finish

Glass guardrail

Porcelain tile

← Arch. concrete block  
(BRICK-1)

← Fabric acoustic ceiling

← Acoustic glass operable  
partition

← Perforated acoustic  
wood wall panel

← Fabric acoustic ceiling

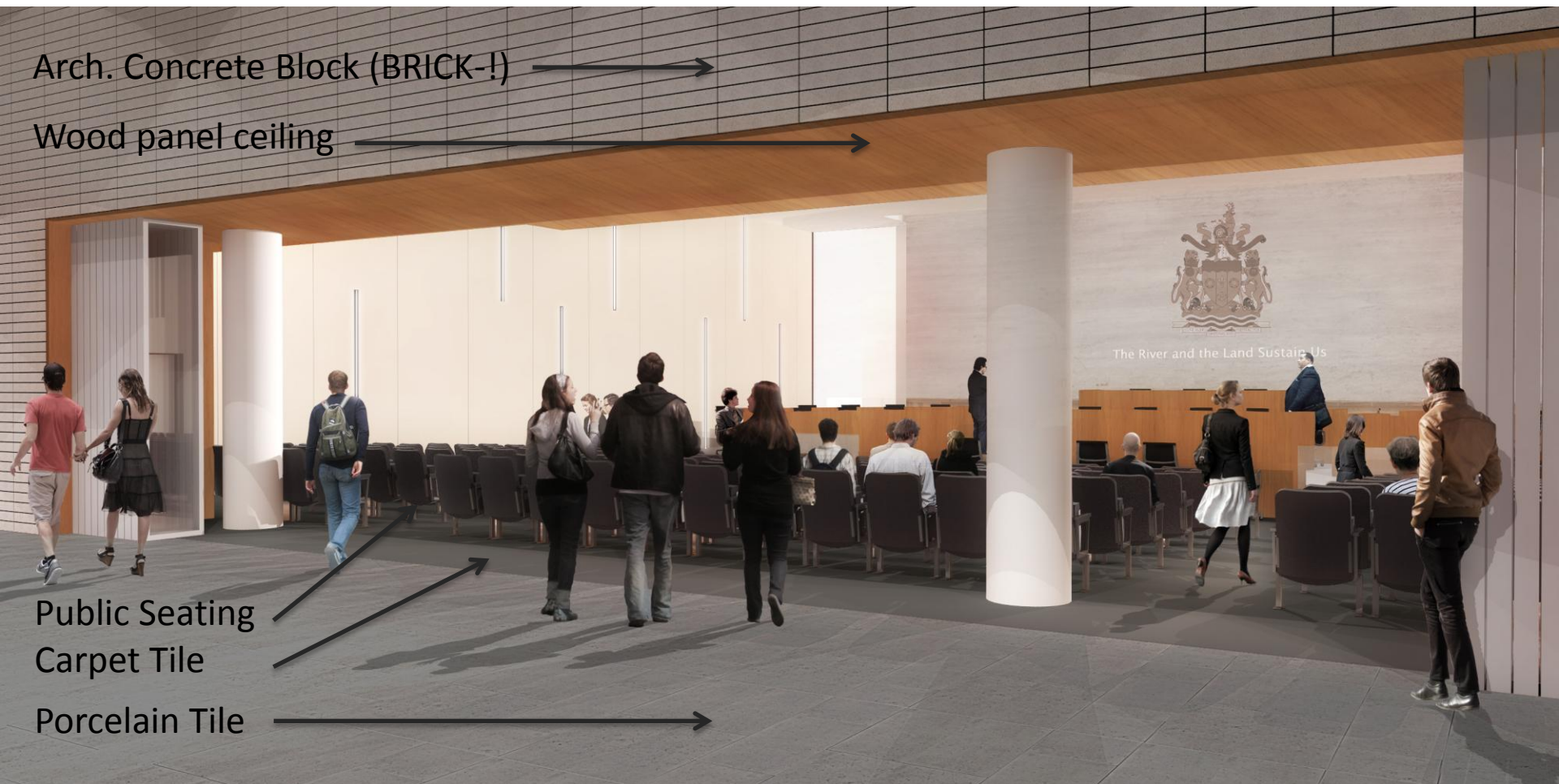
Atrium



Atrium to Council Chamber

**WINDSOR CITY HALL | BUILDING INTERIOR FINISHES OVERVIEW**





Arch. Concrete Block (BRICK-!) →

Wood panel ceiling →

Public Seating →

Carpet Tile →

Porcelain Tile →

Atrium to Council Chamber

# WINDSOR CITY HALL | BUILDING INTERIOR FINISHES OVERVIEW



Council Chamber

**WINDSOR CITY HALL | BUILDING INTERIOR FINISHES OVERVIEW**



Drywall ceiling →

Stone Tile Wall →

Wood Veneer Millwork ↘

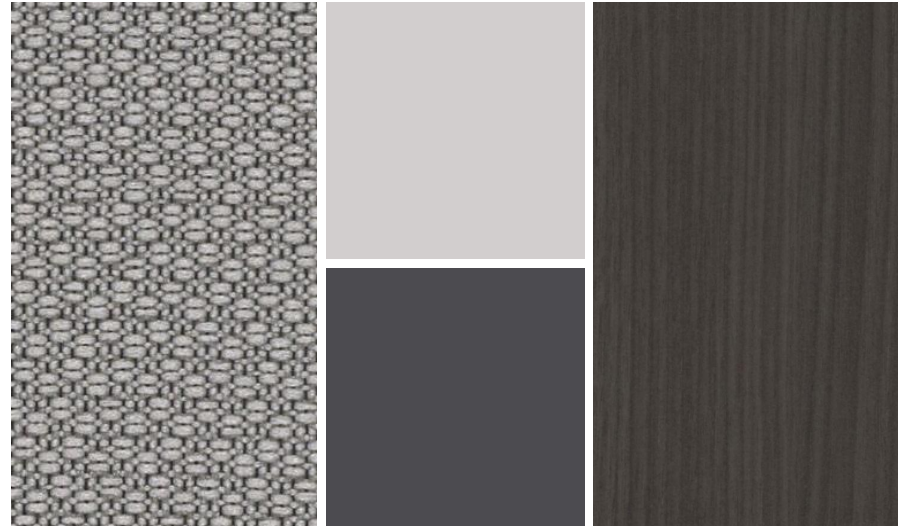
Wood floor ↓

Council Chamber

**WINDSOR CITY HALL | BUILDING INTERIOR FINISHES OVERVIEW**



**SCHEME A** | Light



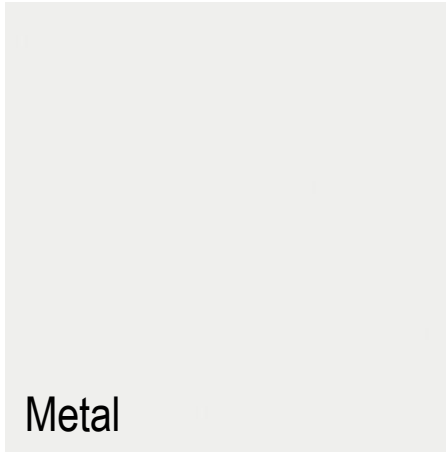
**SCHEME B** | Dark



Systems Fabric



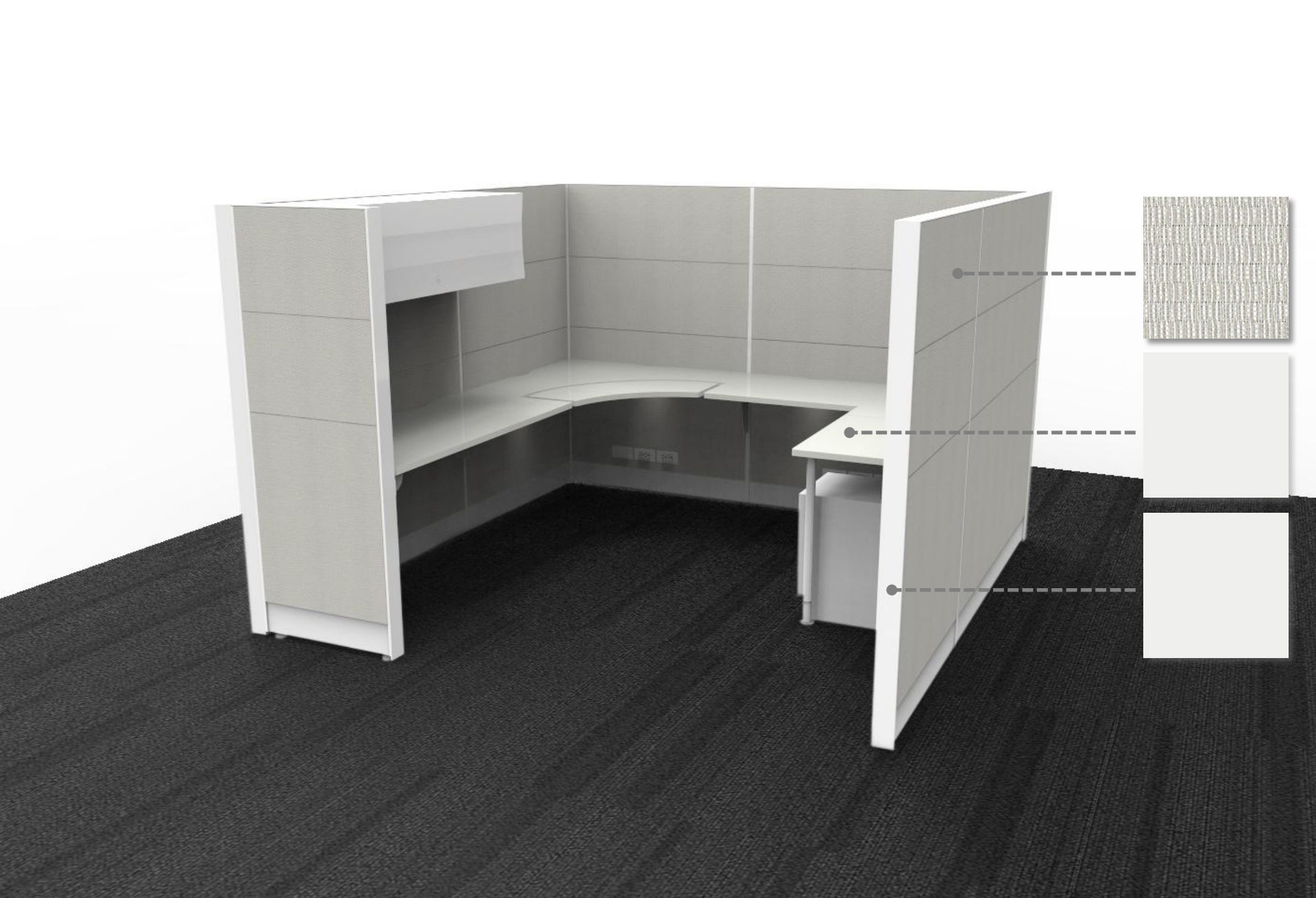
Laminate



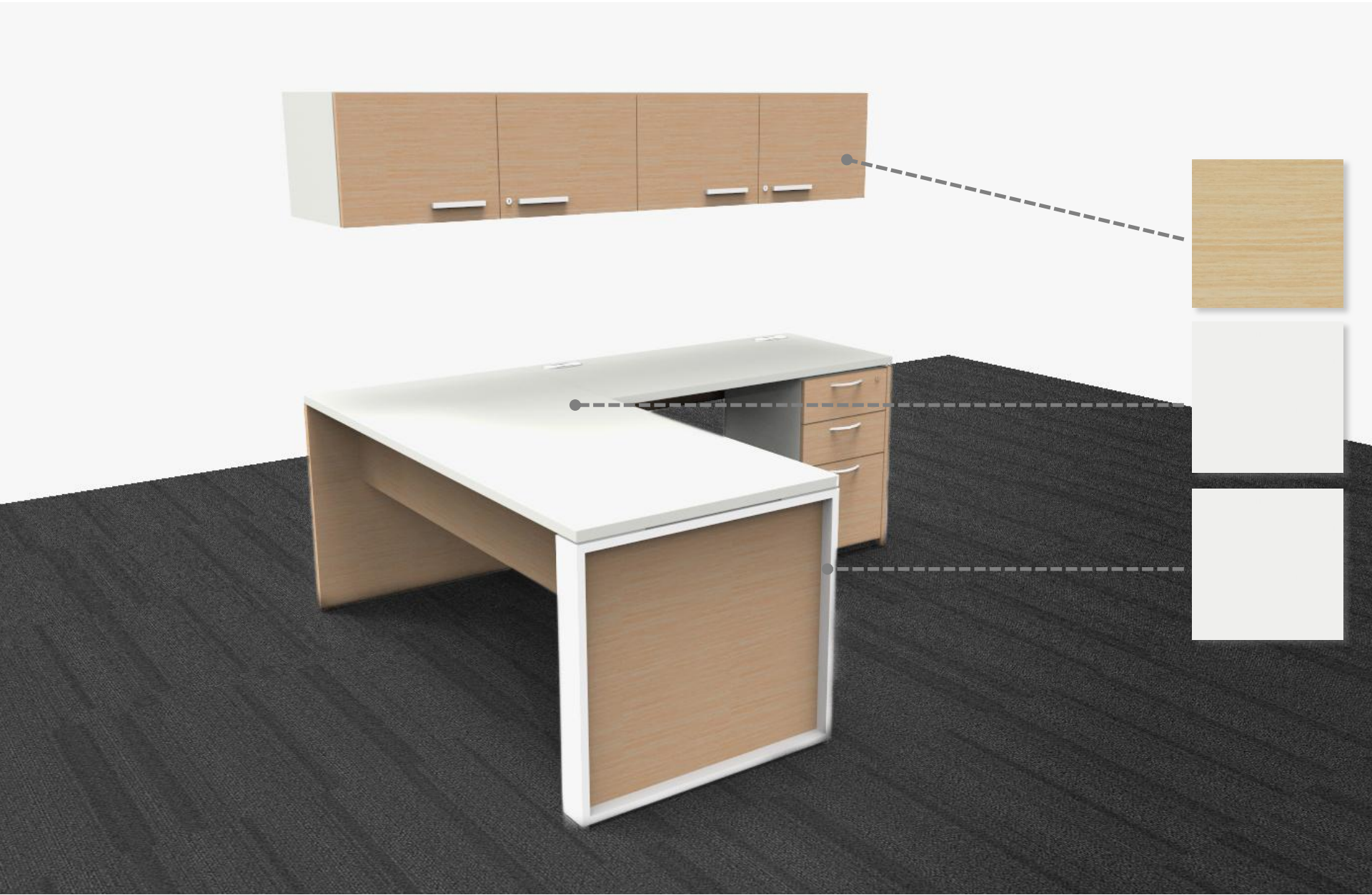
Metal



Accent Laminate



**SCHEME A** | 8x8 Workstation



**SCHEME A** | Private Office



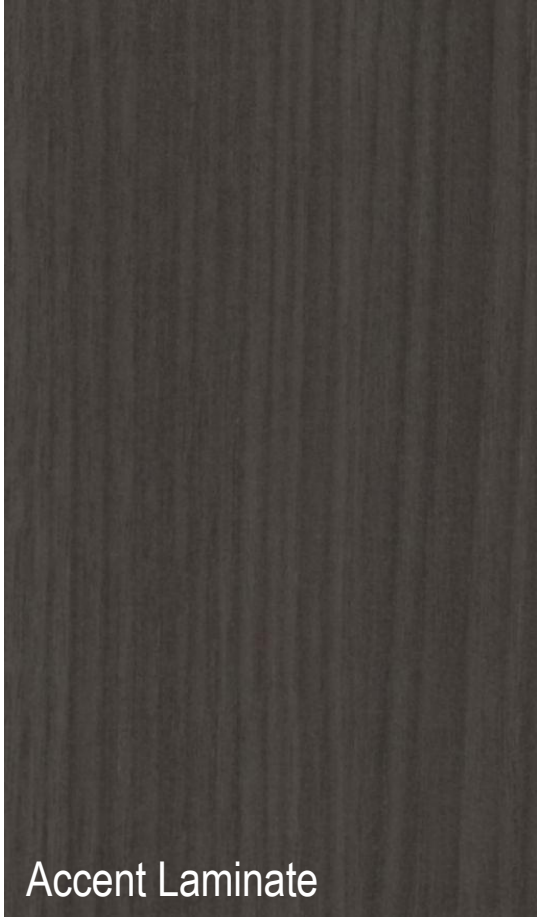
Systems Fabric



Laminate / Metal



Metal (Workstations)



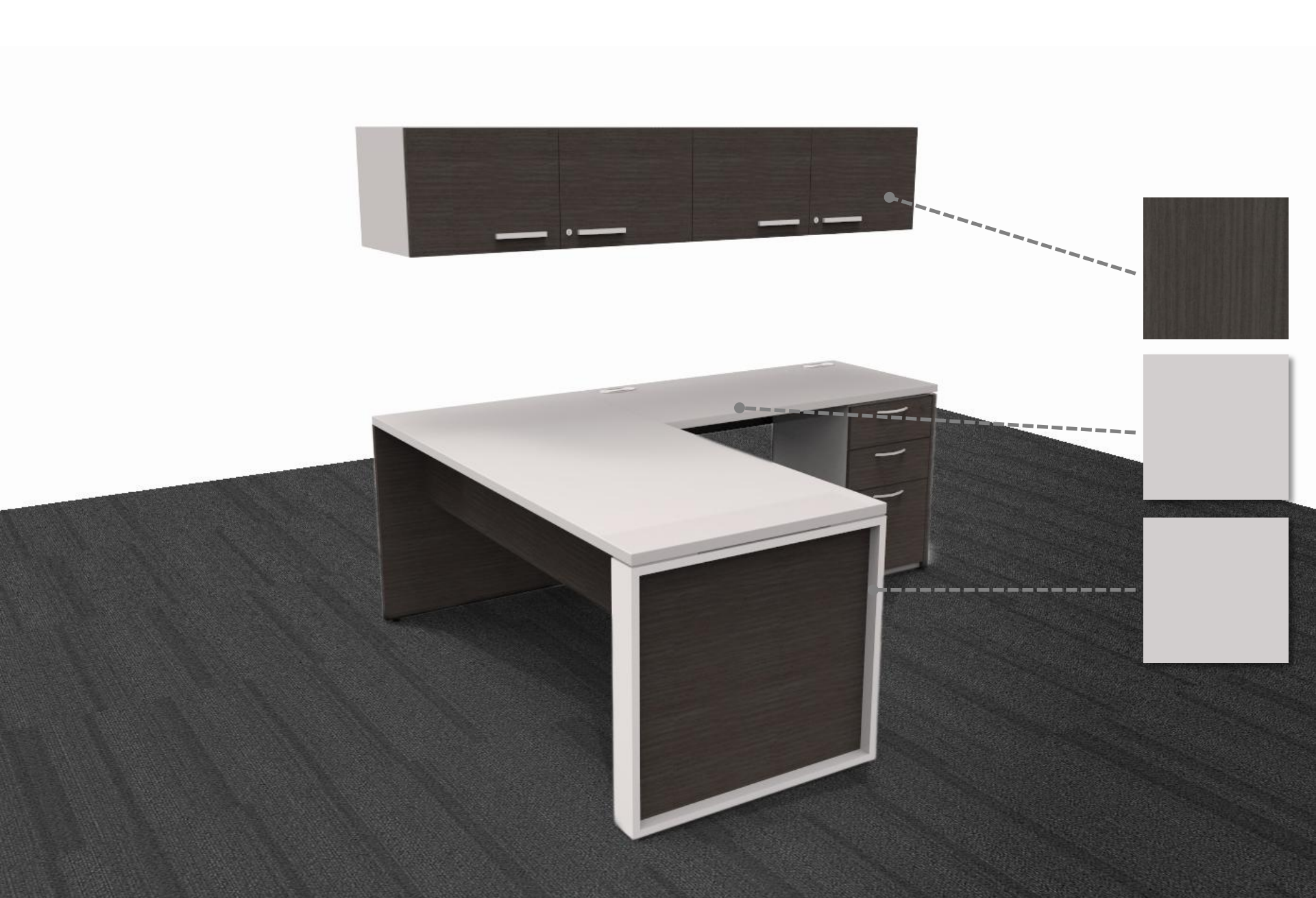
Accent Laminate

**SCHEME B | Dark**





**SCHEME B** | 8x8 Workstation



**SCHEME B** | Private Office



**SCHEME A** | Light



**SCHEME B** | Dark

**SCHEMES** | Workstations



**SCHEME A | Light**



**SCHEME B | Dark**

**SCHEMES | Private Office**